

**PLEASE CHECK WWW.MOLEX.COM FOR LATEST PART INFORMATION**

**Part Number:** [0879110407](#)  
**Status:** **Active**  
**Overview:** [cgrid\\_sl\\_products](#)  
**Description:** 2.54mm (.100") Pitch C-Grid® Header, Right Angle, Through Hole, 4 Circuits, 0.38µm (15µ") Gold (Au) Selective Plating, Tray Packaging, Lead-free

**Documents:**

[Drawing \(PDF\)](#) [RoHS Certificate of Compliance \(PDF\)](#)  
[Product Specification PS-87920-019 \(PDF\)](#)

**Agency Certification**

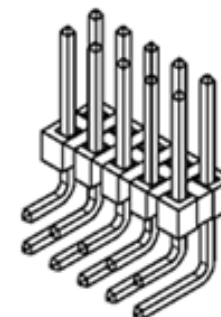
UL E29179

**General**

Product Family PCB Headers  
 Series [87911](#)  
 Application Board-to-Board, Wire-to-Board  
 Overview [cgrid\\_sl\\_products](#)  
 Product Name C-Grid®

**Physical**

Breakaway Yes  
 Circuits (Loaded) 4  
 Circuits (maximum) 4  
 Color - Resin Black  
 First Mate / Last Break No  
 Flammability 94V-0  
 Glow-Wire Compliant No  
 Guide to Mating Part No  
 Keying to Mating Part None  
 Lock to Mating Part None  
 Material - Metal Copper Alloy  
 Material - Plating Mating Gold  
 Material - Plating Termination Tin  
 Material - Resin High Temperature Thermoplastic  
 Number of Rows 2  
 Orientation Right Angle  
 PC Tail Length (in) 0.110 In  
 PC Tail Length (mm) 2.79 mm  
 PCB Locator No  
 PCB Retention None  
 PCB Thickness Recommended (in) 0.062 In  
 PCB Thickness Recommended (mm) 1.60 mm  
 Packaging Type Tray  
 Pitch - Mating Interface (in) 0.100 In  
 Pitch - Mating Interface (mm) 2.54 mm  
 Pitch - Term. Interface (in) 0.100 In  
 Pitch - Term. Interface (mm) 2.54 mm  
 Plating min: Mating (µin) 15  
 Plating min: Mating (µm) 0.38  
 Polarized to Mating Part No  
 Polarized to PCB No  
 Shrouded No  
 Stackable No  
 Surface Mount Compatible (SMC) Yes  
 Temperature Range - Operating -55°C to +105°C



*image - Reference only*

*Series*

**EU RoHS**

**ELV and RoHS Compliant**  
**REACH SVHC**  
 Not Reviewed  
**Halogen-Free Status**  
 Not Reviewed

**China RoHS**



**Need more information on product environmental compliance?**

Email [productcompliance@molex.com](mailto:productcompliance@molex.com)  
 For a multiple part number RoHS Certificate of Compliance, [click here](#)

Please visit the [Contact Us](#) section for any non-product compliance questions.

**Search Parts in this Series**

[87911Series](#)

**Mates With**

7859 Shunts, C-Grid® PCB Receptacles like 71850, SL™ IDT Housing like 70450

Termination Interface: Style Through Hole

**Electrical**

Current - Maximum per Contact 3A  
Voltage - Maximum 250V

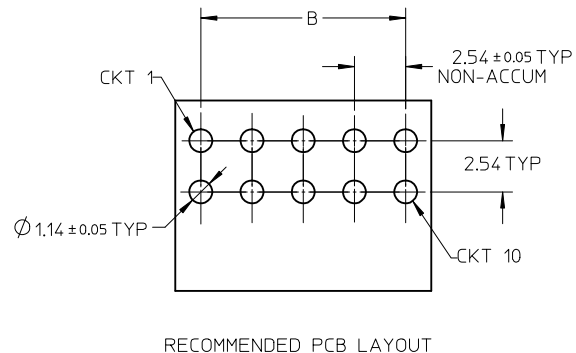
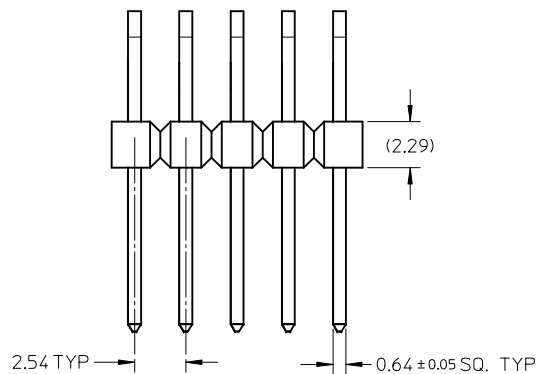
**Material Info**

**Reference - Drawing Numbers**

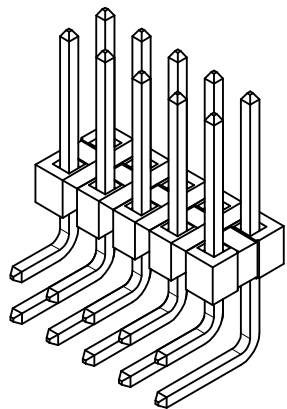
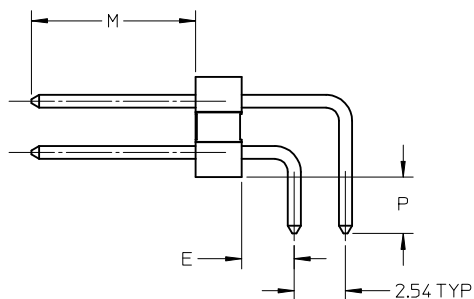
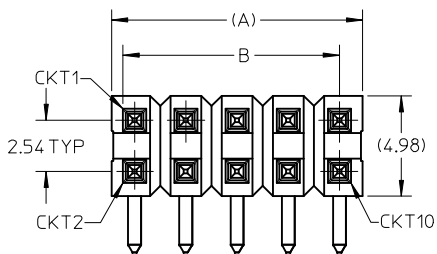
Packaging Specification PK-89990-520  
Product Specification PS-87920-019  
Sales Drawing SD-87911-037

This document was generated on 05/25/2010

**PLEASE CHECK [WWW.MOLEX.COM](http://WWW.MOLEX.COM) FOR LATEST PART INFORMATION**



RECOMMENDED PCB LAYOUT



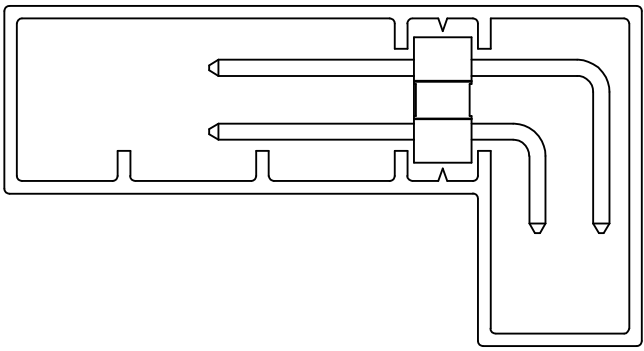
NOTES

1. MATERIAL:
  - HSG: LCP, GLASS-FILLED, UL94V-0
  - COLOR, BLACK
  - PIN: COPPER ALLOY 0.64 mm SQ.
2. PLATING TYPE:
  - (1) 0.38µm MIN GOLD IN CONTACT AREA OVER  
2.00µm MIN TIN SELECTIVE IN SOLDER AREA BOTH OVER  
1.25µm NICKEL OVERALL
  - (2) 0.75µm MIN GOLD IN CONTACT AREA OVER  
2.00µm MIN TIN SELECTIVE IN SOLDER AREA BOTH OVER  
1.25µm NICKEL OVERALL
  - (3) 2.50µm MIN TIN OVERALL  
1.25µm NICKEL OVERALL
3. FOR PACKAGING OPTION PLEASE REFER TO THE TABLE
4. PCB THICKNESS 1.6+/-0.10mm
5. PIN PUSHOUT FORCE 1kgf MIN IN EITHER DIRECTION
6. PRODUCT SPECIFICATION: PS-87920-019
7. WAFER TO BE FLAT WITHIN 0.003 mm/mm
8. THE ABOVE 10CKT SHOWN IS FOR ILLUSTRATION ONLY.
9. EDGES WILL BE ROUGH OR IRREGULAR FOR THESE PARTS DUE TO BREAK-OFF. DIM SHOULD BE TAKEN AS REFERENCE
10. PACKAGING SPECIFICATION: PK-89990-520

PDR#1872.ADD 879112610 EC NO: S2009-0252 DRWN: YMCHEONG 2008/10/15 CHKD: SKANG 2008/10/16 APPR: MLONG 2008/10/16	DESCRIPTION REV	QUALITY SYMBOLS	GENERAL TOLERANCES (UNLESS SPECIFIED)	DIMENSION STYLE	SCALE	DESIGN UNITS	THIRD ANGLE PROJECTION
		▼=0 ∇=0	mm    INCH 4 PLACES ± --- ± --- 3 PLACES ± --- ± --- 2 PLACES ± 0.20 ± --- 1 PLACE ± --- ± --- ANGULAR ± 3 °	MM ONLY	NTS	METRIC	
			DRAWN BY: SKLIM01    DATE: 2006/01/24 CHECKED BY: PATEY    DATE: 2006/02/08 APPROVED BY: PATEY    DATE: 2006/02/08	TITLE	CUSTOM HEADER C-GRID, DUAL ROW HEADER SINGLE WAFER, R/A		
		DRAFT WHERE APPLICABLE MUST REMAIN WITHIN DIMENSIONS	MATERIAL NO. SEE TABLE	DOCUMENT NO. SD-87911-037	MOLEX INCORPORATED		SHEET NO. 1 OF 5

THIS DRAWING CONTAINS INFORMATION THAT IS PROPRIETARY TO MOLEX INCORPORATED AND SHOULD NOT BE USED WITHOUT WRITTEN PERMISSION

TRAY	TUBE WITHOUT CAP	TUBE WITH CAP	CKT SIZE	VOID POSITION	PLATING TYPE	DIMENSION				
						A	B	M	P	E
87911-0407	-----	-----	4	----	1	5.08	2.54	8.13	2.79	2.61
87911-0408	-----	-----	4	----	2	5.08	2.54	8.13	2.79	2.61
87911-0409	-----	-----	4	----	3	5.08	2.54	8.13	2.79	2.61
87911-0607	-----	-----	6	----	1	7.62	5.08	8.13	2.79	2.61
87911-0608	-----	-----	6	----	2	7.62	5.08	8.13	2.79	2.61
87911-0609	-----	-----	6	----	3	7.62	5.08	8.13	2.79	2.61
-----	87911-0807	-----	8	----	1	10.16	7.62	8.13	2.79	2.61
-----	87911-0808	-----	8	----	2	10.16	7.62	8.13	2.79	2.61
-----	87911-0809	-----	8	----	3	10.16	7.62	8.13	2.79	2.61
-----	87911-1007	-----	10	----	1	12.70	10.16	8.13	2.79	2.61
-----	87911-1008	-----	10	----	2	12.70	10.16	8.13	2.79	2.61
-----	87911-1009	-----	10	----	3	12.70	10.16	8.13	2.79	2.61
-----	87911-1207	-----	12	----	1	15.24	12.70	8.13	2.79	2.61
-----	87911-1208	-----	12	----	2	15.24	12.70	8.13	2.79	2.61
-----	87911-1209	-----	12	----	3	15.24	12.70	8.13	2.79	2.61
-----	87911-1407	-----	14	----	1	17.78	15.24	8.13	2.79	2.61
-----	87911-1408	-----	14	----	2	17.78	15.24	8.13	2.79	2.61
-----	87911-1409	-----	14	----	3	17.78	15.24	8.13	2.79	2.61



PART IN TUBE ORIENTATION

<b>PDR#1872.ADD 879112610</b> EC NO: S2009-0252 DRWN: YMC HONG 2008/10/15 CHKD: SKANG 2008/10/16 APPR: MLONG 2008/10/16	QUALITY SYMBOLS ▽=0 ◻=0	GENERAL TOLERANCES (UNLESS SPECIFIED)		DIMENSION STYLE <b>MM ONLY</b>		SCALE <b>NTS</b>	DESIGN UNITS <b>METRIC</b>	THIRD ANGLE PROJECTION			
		4 PLACES ± --- ± --- 3 PLACES ± --- ± --- 2 PLACES ± 0.20 ± --- 1 PLACE ± --- ± ---	mm    INCH	DRAWN BY SKLIM01	DATE 2006/01/24	TITLE <b>CUSTOM HEADER          C-GRID, DUAL ROW HEADER          SINGLE WAFER, R/A</b>					
		ANGULAR ± 3 °		CHECKED BY PATEY	DATE 2006/02/08	MOLEX INCORPORATED					
		DRAFT WHERE APPLICABLE MUST REMAIN WITHIN DIMENSIONS		APPROVED BY PATEY	DATE 2006/02/08	MATERIAL NO. <b>SEE TABLE</b>	DOCUMENT NO. <b>SD-87911-037</b>	SHEET NO. <b>2 OF 5</b>			

PACKAGING OPTION PART NO.										PACKAGING OPTION PART NO.												
TRAY	TUBE WITHOUT CAP	TUBE WITH CAP	CKT SIZE	VOID POSITION	PLATING TYPE	DIMENSION					TRAY	TUBE WITHOUT CAP	TUBE WITH CAP	CKT SIZE	VOID POSITION	PLATING TYPE	DIMENSION					
						A	B	M	P	E							A	B	M	P	E	
F	-----	87911-1607	-----	16	----	1	20.32	17.78	8.13	2.79	2.61	-----	87911-2807	-----	28	----	1	35.56	33.02	8.13	2.79	2.61
	-----	87911-1608	-----	16	----	2	20.32	17.78	8.13	2.79	2.61	-----	87911-2808	-----	28	----	2	35.56	33.02	8.13	2.79	2.61
	-----	87911-1609	-----	16	----	3	20.32	17.78	8.13	2.79	2.61	-----	87911-2809	-----	28	----	3	35.56	33.02	8.13	2.79	2.61
	-----	87911-1807	-----	18	----	1	22.86	20.32	8.13	2.79	2.61	-----	87911-3007	-----	30	----	1	38.10	35.56	8.13	2.79	2.61
	-----	87911-1808	-----	18	----	2	22.86	20.32	8.13	2.79	2.61	-----	87911-3008	-----	30	----	2	38.10	35.56	8.13	2.79	2.61
E	-----	87911-1809	-----	18	----	3	22.86	20.32	8.13	2.79	2.61	-----	87911-3009	-----	30	----	3	38.10	35.56	8.13	2.79	2.61
	-----	87911-2007	-----	20	----	1	25.40	22.86	8.13	2.79	2.61	-----	87911-3207	-----	32	----	1	40.64	38.10	8.13	2.79	2.61
	-----	87911-2008	-----	20	----	2	25.40	22.86	8.13	2.79	2.61	-----	87911-3208	-----	32	----	2	40.64	38.10	8.13	2.79	2.61
	-----	87911-2009	-----	20	----	3	25.40	22.86	8.13	2.79	2.61	-----	87911-3209	-----	32	----	3	40.64	38.10	8.13	2.79	2.61
D	-----	87911-2207	-----	22	----	1	27.94	25.40	8.13	2.79	2.61	-----	87911-3407	-----	34	----	1	43.18	40.64	8.13	2.79	2.61
	-----	87911-2208	-----	22	----	2	27.94	25.40	8.13	2.79	2.61	-----	87911-3408	-----	34	----	2	43.18	40.64	8.13	2.79	2.61
	-----	87911-2209	-----	22	----	3	27.94	25.40	8.13	2.79	2.61	-----	87911-3409	-----	34	----	3	43.18	40.64	8.13	2.79	2.61
	-----	87911-2407	-----	24	----	1	30.48	27.94	8.13	2.79	2.61	-----	87911-3607	-----	36	----	1	45.72	43.18	8.13	2.79	2.61
	-----	87911-2408	-----	24	----	2	30.48	27.94	8.13	2.79	2.61	-----	87911-3608	-----	36	----	2	45.72	43.18	8.13	2.79	2.61
C	-----	87911-2409	-----	24	----	3	30.48	27.94	8.13	2.79	2.61	-----	87911-3609	-----	36	----	3	45.72	43.18	8.13	2.79	2.61
	-----	87911-2607	-----	26	----	1	33.02	30.48	8.13	2.79	2.61	-----	87911-3807	-----	38	----	1	48.26	45.72	8.13	2.79	2.61
	-----	87911-2608	-----	26	----	2	33.02	30.48	8.13	2.79	2.61	-----	87911-3808	-----	38	----	2	48.26	45.72	8.13	2.79	2.61
	-----	87911-2609	-----	26	----	3	33.02	30.48	8.13	2.79	2.61	-----	87911-3809	-----	38	----	3	48.26	45.72	8.13	2.79	2.61
B	-----	87911-2610	-----	26	----	3	33.02	30.48	4.00	2.79	1.32											

<b>PDR#1872.ADD 879112610</b> EC NO: S2009-0252 2008/10/15 DRWN: YMC HONG 2008/10/16 CHKD: SKANG 2008/10/16 APPR: M LONG 2008/10/16 <b>B2</b>	<b>QUALITY SYMBOLS</b>   <b>DESCRIPTION</b> REV	<b>GENERAL TOLERANCES (UNLESS SPECIFIED)</b> mm      INCH		<b>DIMENSION STYLE</b> MM ONLY		SCALE NTS	DESIGN UNITS METRIC	THIRD ANGLE PROJECTION			
		4 PLACES ± --- ± --- 3 PLACES ± --- ± --- 2 PLACES ± 0.20 ± --- 1 PLACE ± --- ± ---	DRAWN BY SKLIM01	DATE 2006/01/24	TITLE <b>CUSTOM HEADER          C-GRID, DUAL ROW HEADER          SINGLE WAFER, R/A</b>						
		ANGULAR ± 3 °	CHECKED BY PATEY	DATE 2006/02/08	<b>MOLEX INCORPORATED</b>						
		DRAFT WHERE APPLICABLE MUST REMAIN WITHIN DIMENSIONS	APPROVED BY PATEY	DATE 2006/02/08	MATERIAL NO. <b>SEE TABLE</b>	DOCUMENT NO. <b>SD-87911-037</b>	SHEET NO. <b>3 OF 5</b>				
				SIZE <b>A3</b>	THIS DRAWING CONTAINS INFORMATION THAT IS PROPRIETARY TO MOLEX INCORPORATED AND SHOULD NOT BE USED WITHOUT WRITTEN PERMISSION						

PACKAGING OPTION PART NO.										PACKAGING OPTION PART NO.												
TRAY	TUBE WITHOUT CAP	TUBE WITH CAP	CKT SIZE	VOID POSITION	PLATING TYPE	DIMENSION					TRAY	TUBE WITHOUT CAP	TUBE WITH CAP	CKT SIZE	VOID POSITION	PLATING TYPE	DIMENSION					
						A	B	M	P	E							A	B	M	P	E	
F	-----	87911-4007	-----	40	----	1	50.80	48.26	8.13	2.79	2.61	-----	87911-5207	-----	52	----	1	66.04	63.50	8.13	2.79	2.61
	-----	87911-4008	-----	40	----	2	50.80	48.26	8.13	2.79	2.61	-----	87911-5208	-----	52	----	2	66.04	63.50	8.13	2.79	2.61
	-----	87911-4009	-----	40	----	3	50.80	48.26	8.13	2.79	2.61	-----	87911-5209	-----	52	----	3	66.04	63.50	8.13	2.79	2.61
	-----	87911-4207	-----	42	----	1	53.34	50.80	8.13	2.79	2.61	-----	87911-5407	-----	54	----	1	68.58	66.04	8.13	2.79	2.61
	-----	87911-4208	-----	42	----	2	53.34	50.80	8.13	2.79	2.61	-----	87911-5408	-----	54	----	2	68.58	66.04	8.13	2.79	2.61
E	-----	87911-4209	-----	42	----	3	53.34	50.80	8.13	2.79	2.61	-----	87911-5409	-----	54	----	3	68.58	66.04	8.13	2.79	2.61
	-----	87911-4407	-----	44	----	1	55.88	53.34	8.13	2.79	2.61	-----	87911-5607	-----	56	----	1	71.12	68.58	8.13	2.79	2.61
	-----	87911-4408	-----	44	----	2	55.88	53.34	8.13	2.79	2.61	-----	87911-5608	-----	56	----	2	71.12	68.58	8.13	2.79	2.61
	-----	87911-4409	-----	44	----	3	55.88	53.34	8.13	2.79	2.61	-----	87911-5609	-----	56	----	3	71.12	68.58	8.13	2.79	2.61
D	-----	87911-4607	-----	46	----	1	58.42	55.88	8.13	2.79	2.61	-----	87911-5807	-----	58	----	1	73.66	71.12	8.13	2.79	2.61
	-----	87911-4608	-----	46	----	2	58.42	55.88	8.13	2.79	2.61	-----	87911-5808	-----	58	----	2	73.66	71.12	8.13	2.79	2.61
	-----	87911-4609	-----	46	----	3	58.42	55.88	8.13	2.79	2.61	-----	87911-5809	-----	58	----	3	73.66	71.12	8.13	2.79	2.61
	-----	87911-4807	-----	48	----	1	60.96	58.42	8.13	2.79	2.61	-----	87911-6007	-----	60	----	1	76.20	73.66	8.13	2.79	2.61
	-----	87911-4808	-----	48	----	2	60.96	58.42	8.13	2.79	2.61	-----	87911-6008	-----	60	----	2	76.20	73.66	8.13	2.79	2.61
C	-----	87911-4809	-----	48	----	3	60.96	58.42	8.13	2.79	2.61	-----	87911-6009	-----	60	----	3	76.20	73.66	8.13	2.79	2.61
	-----	87911-5007	-----	50	----	1	63.50	60.96	8.13	2.79	2.61	-----	87911-6207	-----	62	----	1	78.74	76.20	8.13	2.79	2.61
	-----	87911-5008	-----	50	----	2	63.50	60.96	8.13	2.79	2.61	-----	87911-6208	-----	62	----	2	78.74	76.20	8.13	2.79	2.61
	-----	87911-5009	-----	50	----	3	63.50	60.96	8.13	2.79	2.61	-----	87911-6209	-----	62	----	3	78.74	76.20	8.13	2.79	2.61
B																						

<b>PDR#1872.ADD 879112610</b> EC NO: S2009-0252 2008/10/15 DRWN: YICHONG 2008/10/16 CHKD: SKANG 2008/10/16 APPR: MLONG 2008/10/16	QUALITY SYMBOLS =0 =0	GENERAL TOLERANCES (UNLESS SPECIFIED)		DIMENSION STYLE <b>MM ONLY</b>		SCALE <b>NTS</b>	DESIGN UNITS <b>METRIC</b>	THIRD ANGLE PROJECTION	
		4 PLACES ± --- ± --- 3 PLACES ± --- ± --- 2 PLACES ± 0.20 ± --- 1 PLACE ± --- ± ---		DRAWN BY: SKLIM01 DATE: 2006/01/24 CHECKED BY: PATEY DATE: 2006/02/08 APPROVED BY: PATEY DATE: 2006/02/08		TITLE <b>CUSTOM HEADER          C-GRID, DUAL ROW HEADER          SINGLE WAFER, R/A</b>			
		ANGULAR ± 3 °		MATERIAL NO. <b>SEE TABLE</b>		<b>MOLEX INCORPORATED</b>			
		DRAFT WHERE APPLICABLE MUST REMAIN WITHIN DIMENSIONS		SIZE <b>A3</b>		THIS DRAWING CONTAINS INFORMATION THAT IS PROPRIETARY TO MOLEX INCORPORATED AND SHOULD NOT BE USED WITHOUT WRITTEN PERMISSION		DOCUMENT NO. <b>SD-87911-037</b>	

PACKAGING OPTION PART NO.										PACKAGING OPTION PART NO.												
TRAY	TUBE WITHOUT CAP	TUBE WITH CAP	CKT SIZE	VOID POSITION	PLATING TYPE	DIMENSION					TRAY	TUBE WITHOUT CAP	TUBE WITH CAP	CKT SIZE	VOID POSITION	PLATING TYPE	DIMENSION					
						A	B	M	P	E							A	B	M	P	E	
F	-----	87911-6407	-----	64	----	1	81.28	78.74	8.13	2.79	2.61	-----	87911-7607	-----	76	----	1	96.52	93.98	8.13	2.79	2.61
	-----	87911-6408	-----	64	----	2	81.28	78.74	8.13	2.79	2.61	-----	87911-7608	-----	76	----	2	96.52	93.98	8.13	2.79	2.61
	-----	87911-6409	-----	64	----	3	81.28	78.74	8.13	2.79	2.61	-----	87911-7609	-----	76	----	3	96.52	93.98	8.13	2.79	2.61
	-----	87911-6607	-----	66	----	1	83.82	81.28	8.13	2.79	2.61	-----	87911-7807	-----	78	----	1	99.06	96.52	8.13	2.79	2.61
	-----	87911-6608	-----	66	----	2	83.82	81.28	8.13	2.79	2.61	-----	87911-7808	-----	78	----	2	99.06	96.52	8.13	2.79	2.61
E	-----	87911-6609	-----	66	----	3	83.82	81.28	8.13	2.79	2.61	-----	87911-7809	-----	78	----	3	99.06	96.52	8.13	2.79	2.61
	-----	87911-6807	-----	68	----	1	86.36	83.82	8.13	2.79	2.61	-----	87911-8007	-----	80	----	1	101.60	99.06	8.13	2.79	2.61
	-----	87911-6808	-----	68	----	2	86.36	83.82	8.13	2.79	2.61	-----	87911-8008	-----	80	----	2	101.60	99.06	8.13	2.79	2.61
	-----	87911-6809	-----	68	----	3	86.36	83.82	8.13	2.79	2.61	-----	87911-8009	-----	80	----	3	101.60	99.06	8.13	2.79	2.61
D	-----	87911-7007	-----	70	----	1	88.90	86.36	8.13	2.79	2.61											
	-----	87911-7008	-----	70	----	2	88.90	86.36	8.13	2.79	2.61											
	-----	87911-7009	-----	70	----	3	88.90	86.36	8.13	2.79	2.61											
	-----	87911-7207	-----	72	----	1	91.44	88.90	8.13	2.79	2.61											
	-----	87911-7208	-----	72	----	2	91.44	88.90	8.13	2.79	2.61											
C	-----	87911-7209	-----	72	----	3	91.44	88.90	8.13	2.79	2.61											
	-----	87911-7407	-----	74	----	1	93.98	91.44	8.13	2.79	2.61											
	-----	87911-7408	-----	74	----	2	93.98	91.44	8.13	2.79	2.61											
	-----	87911-7409	-----	74	----	3	93.98	91.44	8.13	2.79	2.61											
B																						

<b>PDR#1872.ADD 879112610</b> EC NO: S2009-0252 2008/10/15 DRWN: YICHONG 2008/10/16 CHKD: SKANG 2008/10/16 APPR: MLONG 2008/10/16	QUALITY SYMBOLS ▽=0 ◻=0	GENERAL TOLERANCES (UNLESS SPECIFIED) mm      INCH 4 PLACES ± --- ± --- 3 PLACES ± --- ± --- 2 PLACES ± 0.20 ± --- 1 PLACE ± --- ± --- ANGULAR ± 3 °	DIMENSION STYLE <b>MM ONLY</b> DRAWN BY: SKLIM01      DATE: 2006/01/24 CHECKED BY:              DATE: APPROVED BY:            DATE: 2006/02/08 PATEY                      2006/02/08	SCALE <b>NTS</b>	DESIGN UNITS <b>METRIC</b>	THIRD ANGLE PROJECTION	<b>CUSTOM HEADER</b> <b>C-GRID, DUAL ROW HEADER</b> <b>SINGLE WAFER, R/A</b> <b>MOLEX INCORPORATED</b> MATERIAL NO.      DOCUMENT NO.      SHEET NO. <b>SEE TABLE</b> <b>SD-87911-037</b> <b>5 OF 5</b>
		DRAFT WHERE APPLICABLE MUST REMAIN WITHIN DIMENSIONS	THIS DRAWING CONTAINS INFORMATION THAT IS PROPRIETARY TO MOLEX INCORPORATED AND SHOULD NOT BE USED WITHOUT WRITTEN PERMISSION				