

**PLEASE CHECK WWW.MOLEX.COM FOR LATEST PART INFORMATION**

**Part Number:** [0917143022](#)  
**Status:** **Active**  
**Description:** 1.27mm (.050") Pitch Picoflex® PF-50 Header, Right Angle, High Temp, Gold (Au) Plating, 22 Circuits, Glow Wire Compatible

**Documents:**

[3D Model](#) [Product Specification PS-99020-0011 \(PDF\)](#)  
[Drawing \(PDF\)](#) [RoHS Certificate of Compliance \(PDF\)](#)

**General**

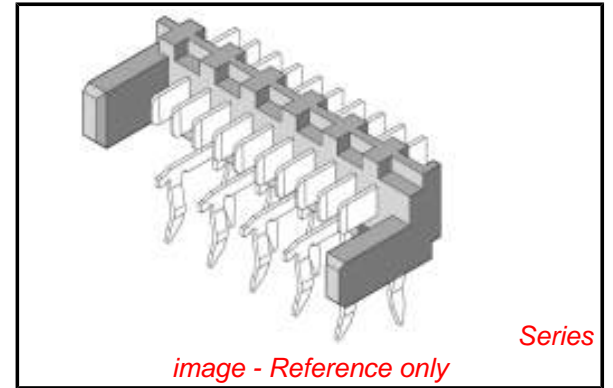
Product Family Ribbon Cable / Wire Trap Connectors  
 Series [91714](#)  
 Component Type PCB Header  
 Glow-Wire Compliant Yes  
 Product Name Picoflex®

**Physical**

Circuits (Loaded) 22  
 Circuits (maximum) 22  
 Color - Resin Natural  
 Durability (mating cycles max) 100  
 Entry Angle 90° Angle  
 Lock to Mating Part Yes  
 Material - Metal Brass  
 Material - Plating Mating Gold  
 Material - Plating Termination Gold  
 Material - Resin High Temperature Thermoplastic  
 Number of Rows 1  
 PCB Locator No  
 PCB Retention Yes  
 PCB Thickness Recommended (in) 0.063 In  
 PCB Thickness Recommended (mm) 1.60 mm  
 Packaging Type Tube  
 Pitch - Mating Interface (in) 0.050 In  
 Pitch - Mating Interface (mm) 1.27 mm  
 Pitch - Term. Interface (in) 0.050 In  
 Pitch - Term. Interface (mm) 1.27 mm  
 Plating min: Mating (µin) 30.4  
 Plating min: Mating (µm) 0.76  
 Plating min: Termination (µin) 4  
 Plating min: Termination (µm) 0.1  
 Polarized to Mating Part Yes  
 Polarized to PCB No  
 Shrouded Open Ends  
 Stackable No  
 Surface Mount Compatible (SMC) No  
 Temperature Range - Operating -40°C to +105°C  
 Termination Interface: Style Through Hole - Kinked Pin  
 Wire Insulation Diameter N/A  
 Wire Size AWG N/A  
 Wire/Cable Type Ribbon Cable

**Electrical**

Current - Maximum per Contact 2.4A  
 Voltage - Maximum 250V AC/DC



**EU RoHS**

**ELV and RoHS Compliant**  
**REACH SVHC Contains SVHC: No**  
**Halogen-Free Status**  
**Not Reviewed**

**China RoHS**



**Need more information on product environmental compliance?**

Email [productcompliance@molex.com](mailto:productcompliance@molex.com)  
 For a multiple part number RoHS Certificate of Compliance, [click here](#)

Please visit the [Contact Us](#) section for any non-product compliance questions.

**Search Parts in this Series**

[91714Series](#)

**Mates With**

[90327 IDT Connector](#)

**Material Info**

**Reference - Drawing Numbers**

Product Specification

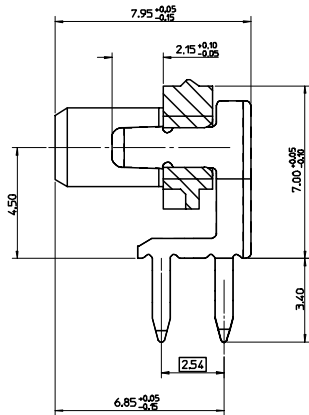
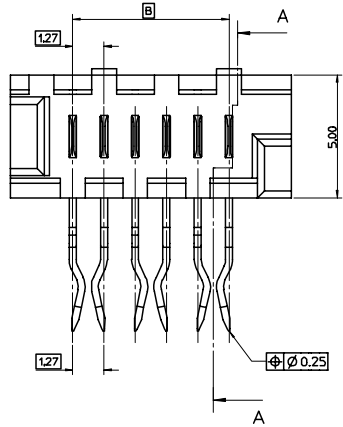
PS-99020-0011

Sales Drawing

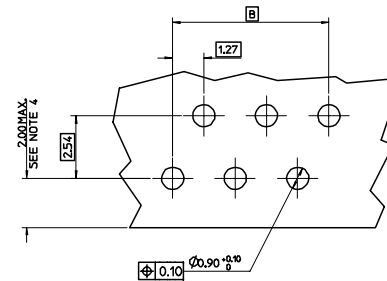
SD-91714-001

This document was generated on 04/13/2010

**PLEASE CHECK [WWW.MOLEX.COM](http://WWW.MOLEX.COM) FOR LATEST PART INFORMATION**



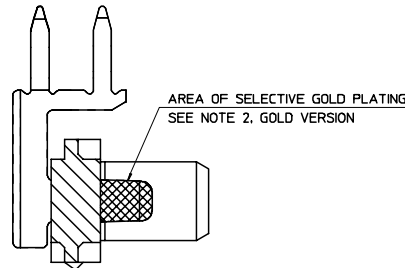
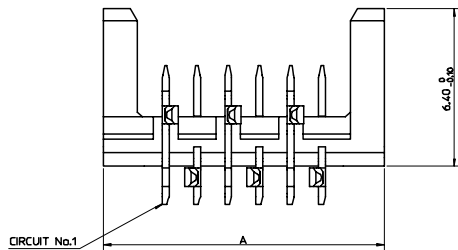
SECTION A-A



RECOMMENDED P.C.B. LAYOUT VIEWED FROM COMPONENT SIDE  
(P.C.B THICKNESS 1.60±0.20)

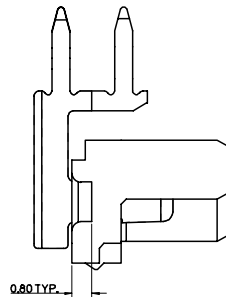
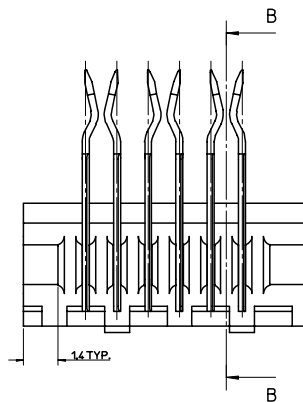
91714 - \* 0 \*\*

— (CIRCUIT SIZE (SEE CHART))  
— 0- 3-5um TIN VERSION  
— 3- 0.76um GOLD VERSION



SECTION B-B

PART No.	No. OF CKTS	DIMN. A	DIMN. B	QTY PER TUBE
91714--026	26	36.80	31.75	14
91714--024	24	34.26	29.21	15
91714--022	22	31.72	26.67	16
91714--020	20	29.18	24.13	18
91714--018	18	26.64	21.59	20
91714--016	16	24.10	19.05	22
91714--014	14	21.56	16.51	24
91714--012	12	19.02	13.97	28
91714--010	10	16.48	11.43	32
91714--008	08	13.94	8.89	38
91714--006	06	11.40	6.35	46
91714--004	04	8.86	3.81	59



NOTES:

- MATERIAL: HOUSING: NYLON 46, 30% GLASS FILLED TO UL 94 V-0, NATURAL. TERMINAL: CARTRIDGE BRASS 0.28 THICK REF.
- PLATING: TIN VERSION: 3-5um TIN ALLOVER 127um NICKEL UNDERCOAT. GOLD VERSION: 0.76um SELECTIVE GOLD AND 0.10-0.20um GOLD FLASH ALLOVER 127um NICKEL UNDERCOAT.
- MATES WITH MOLEX 90327 SERIES.
- DIMENSION APPLIES ONLY WHEN MATED TO A 90327 CONNECTOR WHOSE CABLE EXTENDS TOWARDS THE P.C.B.
- SEE PRODUCT SPECIFICATION PS-99020-0011.

REVISION UPDATE EC No: E2007-0083 DRWN: DNASZKIE/2006/09/11 CHKD: JDENNEHY/2006/09/11 APPR: JDENNEHY/2006/09/13	QUALITY SYMBOLS ▽ 0 ▽ 0	GENERAL TOLERANCES (UNLESS SPECIFIED) mm    INCH		SCALE 10:1 DESIGN UNITS METRIC DIMENSION STYLE MM ONLY	THIRD ANGLE PROJECTION REVISION SYMBOL	REVISE ON CAD ONLY
		4 PLACES ± --- ± --- 3 PLACES ± --- ± --- 2 PLACES ± 0.10 ± --- 1 PLACE ± 0.20 ± --- ANGULAR ± 2 °	DRAWN BY JDENNEHY DATE 2004/02/17 CHECKED BY JDENNEHY DATE 2004/02/18 APPROVED BY BMAGUIRE DATE 2004/02/20			
D	DESCRIPTION	DRAFT WHERE APPLICABLE MUST REMAIN WITHIN DIMENSIONS	MATERIAL NO. SEE CHART DOCUMENT NO. SD-91714-001	SHEET NO. 1 OF 1 THIS DRAWING CONTAINS INFORMATION THAT IS PROPRIETARY TO MOLEX INCORPORATED AND SHOULD NOT BE USED WITHOUT WRITTEN PERMISSION	A1	