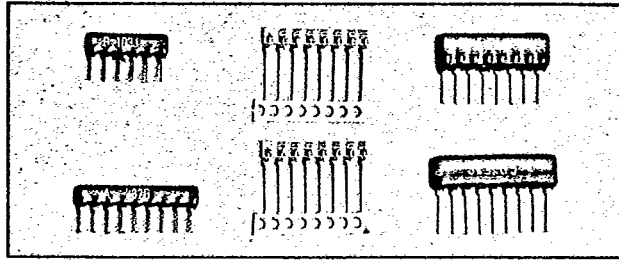


RESISTOR NETWORKS - SIP

T-62-05



INTRODUCTION

THICK FILM RESISTOR NETWORK HAVE METAL GLAZE ELEMENT ON THE CERAMIC SUBSTRATES WITH STRONG CLIP-CONSTRUCTION TERMINAL, AND ARE COAT WITH SPECIAL EPOXY RESIN. THEY ARE THE MOST SUITABLE TO MEET THE DENSITY OF CIRCUIT ASSEMBLING.

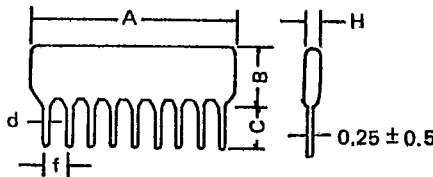
FEATURES

- MINATURE, HIGH DENSITY PACKAGING
- COMBINATIONS OF DIFFERENT OHMIC VALUE ARE AVAILABLE
- HIGH RELIABILITY WITH RUO₂ PASTE.

APPLICATION

- CONTROL CIRCUITS OF V.T.R. COMPUTER, FACSIMILE, CAR & AIR-CONDITIONER.
- COLOR T.V. & OTHER ELECTRONIC EQUIPMENTS FOR CONSUMER USE.

DIMENSION : mm



TYPE	A (MAX)	B (MAX)		H (Max)	C ±0.5	d ±0.05	f ±0.2
		RA	RB				
4 Pin	10.2	5.08	8.5	2.5	3.5	0.5	2.54
5 Pin	12.7						
6 Pin	15.3						
7 Pin	17.8						
8 Pin	20.4						
9 Pin	22.9						
10 Pin	25.4						
11 Pin	28.0						
12 Pin	30.5						

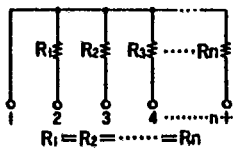
RA SERIES-LOW PROFILE
RB SERIES-HIGH POWER

● RATING

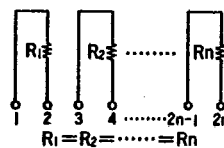
OPERATING TEMP. RANGE	-55°C ~ +125°C	WATTAGE/ELEMENT	RA		RB	
			B CIRCUIT	OTHERS	B CIRCUIT	OTHERS
T. C. R.	±200 ppm/°C		0.20W	0.125W	0.30W	0.25W
RATING AMBIENT TEMP.	+70°C	MAX. WORKING VOLTAGE	100V		200V	
RESISTANCE RANGE (E-12 SERIES)	R CIRCUIT 100Ω - 10KΩ	OTHER 22Ω - 1MΩ	RESISTANCE TOLERANCE		F (±1%)	G (±2%)
					J (±5%)	

CIRCUITS CONSTRUCTION

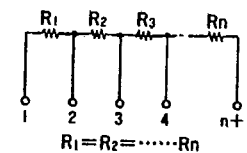
A STYLE



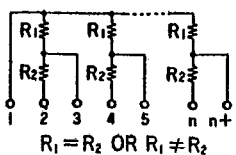
B STYLE



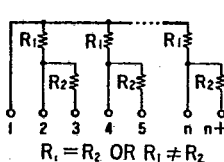
D STYLE



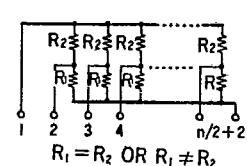
P STYLE



E STYLE



R STYLE



SPECIAL REQUIREMENT ARE AVAILABLE

RESISTOR NETWORKS - SIP



CHARACTERISTIC

Item	Test methods	Specifications
Resistance temperature characteristics	Room temp - 55°C ~ + 125°C	Less than ± 200ppm/°C
Temperature cycling	-55°C ~ + 125°C 5 cycles	Less than ± (0.5% + 0.05Ω)
Short-time overload	Rated voltage x 2.5 5 sec.	Less than ± (0.5% + 0.05Ω)
Terminal strength	Pull 500g, Bend 2 times	Less than ± (0.2% + 0.05Ω)
Dielectric withstanding voltage	500V, 1 minute	Less than ± (0.5% + 0.05Ω)
Resistance to soldering heat	350°C, 3 sec.	Less than ± (0.5% + 0.05Ω)
Insulation resistance	100V	Over 10K Megohm min
Moisture load life	40°C, 90 ~ 95% RH rated voltage 1000 hours	Less than ± (2% + 0.05Ω)
Load life	70°C, Rated voltage 1000 hours	Less than ± (2% + 0.05Ω)

STANDARD RESISTANCE (Ω) E - 12 SERIES

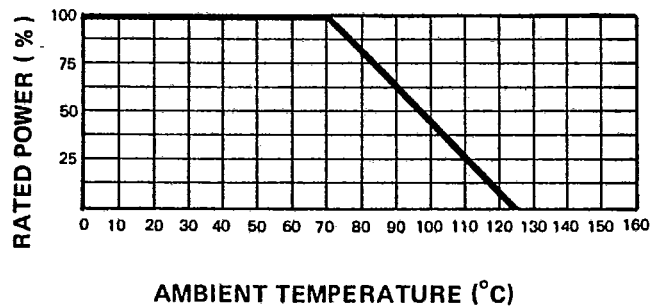
-	-	-	-	22	27	33	39	47	56	68	82
100	120	150	180	220	270	330	390	470	560	680	820
1K	1.2K	1.5K	1.8K	2.2K	2.7K	3.3K	3.9K	4.7K	5.6K	6.8K	8.2K
10K	12K	15K	18K	22K	27K	33K	39K	47K	56K	68K	82K
100K	120K	150K	180K	220K	270K	330K	390K	470K	560K	680K	820K

1Meg

• DUAL TERMINATORS (R1/R2) (Ω)

160/240	330/390
180/390	330/470
220/270	1.5K/3.3K
220/330	3.0K/6.2K

• DERATING CURVE



HOW TO ORDER

