



Part Number	Package	Application	Last Modified
820-IF120.0M-C	20.2 x 12.6mm	IF SAW Filter	Apr 18, 2007

TYPE :  
120.0 MHz IF SAW Filter

PART NUMBER :  
**820-IF120.0M-C**

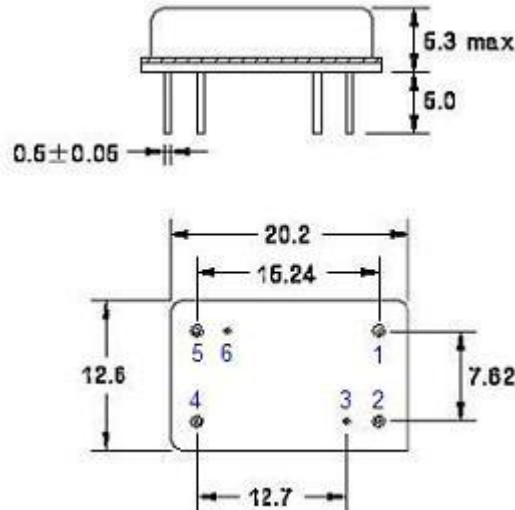


**OPERATING CONDITIONS / ELECTRICAL CHARACTERISTICS**

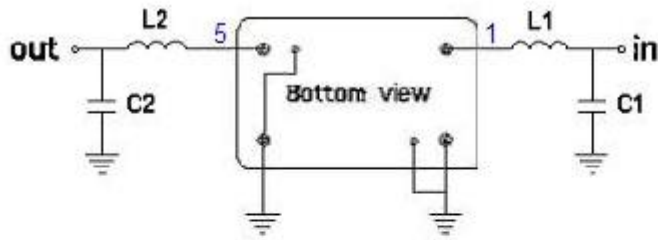
PARAMETERS	Minimum	Typical	Maximum	Units
Center Frequency (Fo)	119.94	120.0	120.06	MHz
Insertion Loss at Fo	-	22.2	24.0	dB
Source Impedance (single ended)*	-	50	-	ohm
Load Impedance (single ended)*	-	50	-	ohm
Bandwidth at -1.0 dB	-	19.95	-	MHz
Bandwidth at -3.0 dB	20.25	20.35	-	MHz
Bandwidth at -35.0 dB	-	21.70	-	MHz
Bandwidth at -40.0 dB	-	21.80	22.0	MHz
Amplitude Ripple	-	0.75	1.0	dBp-p
Ultimate Rejection	50	55	-	dB
Group Delay Variation	-	50	100	nsec
Absolute Delay at Fo	-	2.2	-	µsec
Temperature Coefficient	-	-72	-	ppm/°C

\*With Matching Network (Reference Testing Environment Circuit as shown) Modify Impedance Values as necessary.

**PACKAGE OUTLINE (mm)**

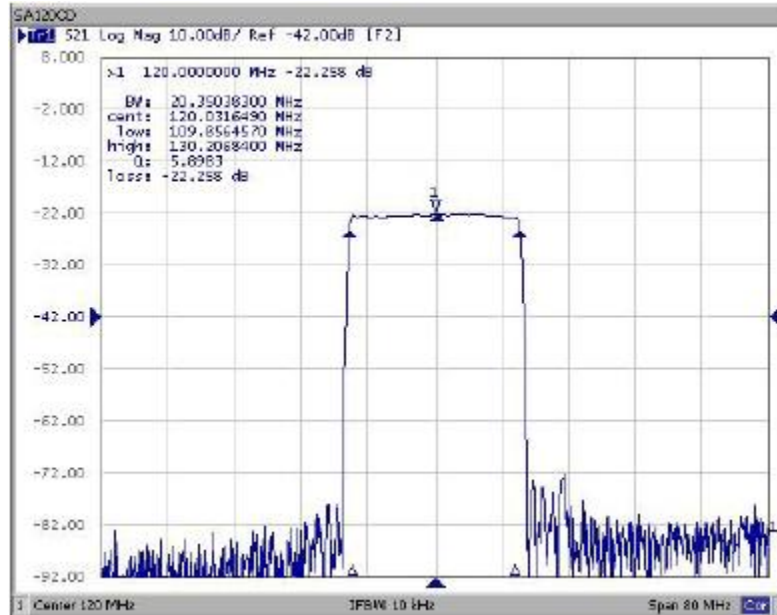


## TESTING ENVIRONMENT



Test Fixture & Values	
Input	L1=47nH Q>40 , C1=27pF
Output	L2=39nH Q>40 , C2=15pF

## Frequency Response



**Oscilent Corporation** - CALL **949.252.0522**

**Part No.:** 820-IF120.0M-C

18195 East McDermott Street , Building D , Irvine , CA 92614 , USA  
 Fax: 949.252.0599 , E-Mail: Sales@Oscilent.com