

Fact Sheet

CODEWARRIOR™ DEVELOPMENT SYSTEM

FOR COLDFIRE™ MCF5272



OVERVIEW

CodeWarrior™ development systems are designed for fast set-up and installation, allowing you to be productive in minutes. This comprehensive development environment completely integrates the Motorola M5272C3 development hardware with the CodeWarrior Integrated Development Environment. It's a complete solution that also includes example software and hardware to jump-start your product development.

WHY DEVELOP APPLICATIONS WITH CODEWARRIOR?

- Get to Market, Fast—Speed your time to market by creating, compiling, linking, assembling, deploying and troubleshooting within a single, integrated development environment. Use our completely-integrated tools to speed your development time or “plug-in” familiar third-party editors, compilers and debuggers.
- Optimize Your Code—Create fast, highly-optimized code in the market with our ANSI C/C++ compliant compilers. ELF/DWARF files are generated for execution and debugging.
- Integrate Seamlessly—The open architecture allows you to plug-in your favorite editor or third-party tools. Use the same IDE to create software for multiple processors and architectures — an important part of the power and flexibility of CodeWarrior tools.

- The fast-track to software development for the M5272C3—Within minutes you can be developing your application through a simple-to-use, yet sophisticated Integrated Development Environment (IDE) based on an M5272C3 development hardware.
- Comprehensive Development Environment—CodeWarrior Development Tools for the ColdFire™ MCF5272 are powerful yet easy-to-use tool suite designed specifically to increase your software development productivity. The CodeWarrior Integrated Development Environment provides unparalleled, intuitive GUI-based development tools for the ColdFire MCF5272, hosted on Windows. This IDE includes an advanced compiler, assembler, debugger, linker for C/C++ and Assembly. The state-of-the-art CodeWarrior project manager and build system, code browser and code navigation system enable you to develop high-quality code while accelerating your compile-build-debug cycles. Because the CodeWarrior development environment is completely integrated, you'll spend less time navigating between tools and more time generating code.

Sturdy case for easy transport and storage

CodeWarrior Development Tools for ColdFire, Version 3.0 (full license)

Motorola MCF5272C3 board

Complete documentation

P&E BDM Wiggler



CodeWarrior t-shirt

Power Supply

All the necessary adapters & cables

CodeWarrior Quick Reference

Multi-use tool

SOFTWARE DOCUMENTATION AND SAMPLE SOFTWARE

MCF5272 specific project stationery, ColdFire™ timer example, runtime libraries, and register configurations are built into the CodeWarrior™ IDE. These settings and example projects will help you start developing on the M5272C3 quickly after set up.

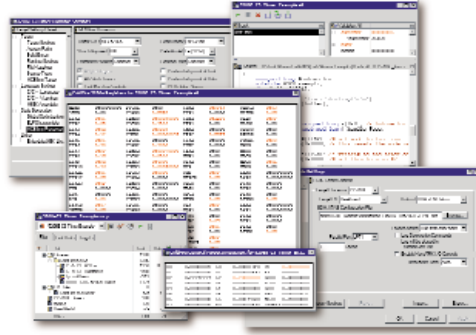
Need to understand how to design the MCF5272 into your actual system? Full schematics for the development board can be found in the user's manual for the evaluation board. Additional help in the form of applications notes for specific hardware design issues can be found on the Motorola support site for the M5272C3.

MCF5272: Integrated ColdFire version 2 Microprocessor

The MCF5272 microprocessor is an integrated ColdFire architecture offering a new set of communication peripherals, such as a 10/100 Ethernet controller and a USB module, but it maintains popular general-purpose peripherals included on previous ColdFire standard products. Based on a Version 2 (V2) ColdFire core, it also achieves the highest V2 performance yet, with 63 Dhrystone 2.1 MIPS at 66 MHz.

M5272C3: Evaluation Hardware for MCF5272

The M5272C3 evaluation board provides an excellent vehicle for embarking on a high-performance embedded design. With 4 MBytes of SDRAM, 2 MByte of Flash, 10/100 BaseT ethernet connectivity, two serial ports, available expansion of 512 KByte SRAM for high-speed critical code or benchmarking, USB device port and access to the best-in-class ColdFire debug module. This complete package includes all the components for realizing an MCF5272 design quickly and easily. There are 2 expansion connectors on the M5272C3 (J2 and J3) which are used to connect the board to external I/O devices and/or expansion boards.



MINIMUM SYSTEM REQUIREMENTS

- Pentium® II processor or AMD-K6® class processor
- Hosted on Windows® 98/2000/NT/ME
- 64 MB RAM, 128 MB recommended
- 195 MB hard disk space
- Parallel port
- CD-ROM drive for installation

METROWERKS SUPPORT POLICY

- Online help and documentation
- Free 90-day New User Installation Support
- Version update and support packages available
- Updated device drivers available on the web

MOTOROLA PART NUMBER

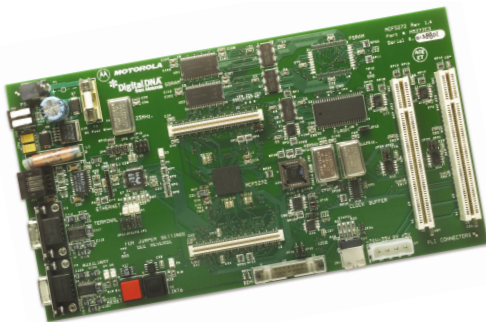
- CWDEVSYS5272-MCF5272 Development System
- CWDS68KCFSPPT-Technical Support

Metrowerks United States
9801 Metric Blvd.
Austin, Texas 78758 USA
Phone: +1.512.997.4700
Fax: +1.512.997.4901
E-mail: info@metrowerks.com

Metrowerks Europe
Riehenring 175, CH-4058
Basel, Switzerland
Phone: +41.61.690.7500
Fax: +41.61.690.7501
E-mail: info_europe@metrowerks.com

Metrowerks Japan
Shibuya Mitsuba Bldg.
5F Udagawa-cho 20-11
Shibuya-ku Tokyo 150-0042 Japan
Phone +81.3.3780.6091
Fax +81.3.3780.6092
E-mail: asia-sales@metrowerks.com

Metrowerks APAC
2 Dai King Street,
Taipo Industrial Estate,
Tai Po, N.T., Hong Kong
email: asia-sales@metrowerks.com
tel: +852 2666 8730
fax: +852 2666 6578
tech support: tel: +852 2666 8743
fax: +852 2666 6578
email: asia-support@metrowerks.com
web: www.metrowerks.com/support
www.metrowerks.com



© Copyright. 2002. Metrowerks Corp. ALL RIGHTS RESERVED. Metrowerks, the Metrowerks logo, and CodeWarrior are trademarks or registered trademarks of Metrowerks Corp. in the U.S. and/or other countries. Metrowerks is a Motorola company. All other tradenames and trademarks are the property of their respective owners and are hereby recognized. Printed in U.S.A.