

PLEASE CHECK WWW.MOLEX.COM FOR LATEST PART INFORMATION

Part Number: [0009075069](#)
Status: **Active**
Overview: [kk](#)
Description: 3.96mm (.156") KK® IDT Trifurcon™ Contact, 6 Circuits, Tin (Sn), Feed-Through, 24 and 22 Solid or Fused Stranded, and 22 Stranded, Black ID Strip

Documents:

[3D Model](#) [Product Specification PS-7660 \(PDF\)](#)
[Drawing \(PDF\)](#) [RoHS Certificate of Compliance \(PDF\)](#)

General

Product Family IDT and Solder Connectors
 Series [7674](#)
 Comments Trifurcon™ contact
 Crimp Quality Equipment Yes
 Overview [kk](#)
 Product Name KK®, Trifurcon™

Physical

Circuits (Loaded) 6
 Color - Resin Natural
 Gender Female
 Glow-Wire Compliant No
 Lock to Mating Part None
 Material - Metal Brass
 Material - Resin Nylon
 Number of Rows 1
 Packaging Type Bag
 Panel Mount No
 Pitch - Mating Interface (in) 0.156 In
 Pitch - Mating Interface (mm) 3.96 mm
 Temperature Range - Operating 0°C to +75°C
 Termination Interface: Style IDT or Pierce
 Wire Size AWG 22 Solid, 22 Stranded, 22 Stranded Topcoat, 24 Solid, 24 Stranded Topcoat

Electrical

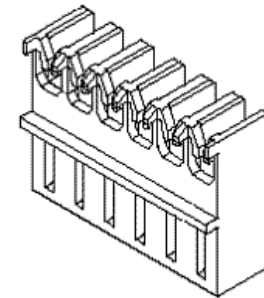
Voltage - Maximum 250V

Material Info

Old Part Number A-7674-A06J102A

Reference - Drawing Numbers

Packaging Specification PK-7674-001
 Product Specification PS-7660
 Sales Drawing SDA-7674-*



Series

image - Reference only

EU RoHS

ELV and RoHS Compliant

REACH SVHC

Contains SVHC: No

Halogen-Free

Status

Not Reviewed

China RoHS



Need more information on product environmental compliance?

Email productcompliance@molex.com
 For a multiple part number RoHS Certificate of Compliance, [click here](#)

Please visit the [Contact Us](#) section for any non-product compliance questions.

Search Parts in this Series

[7674Series](#)

Application Tooling | [FAQ](#)

Tooling specifications and manuals are found by selecting the products below. Crimp Height Specifications are then contained in the Application Tooling Specification document.

Global

| Description | Product # |
|---|----------------------------|
| Insertion Tool for 3.96mm (.156") Pitch KK® IDT Crimp Terminals | 0638133503 |
| IDT - Manual Press For Ribbon Cable | 0011200314 |
| IDT - Semi-automatic - Bench-Top Terminator | 0011200418 |
| IDT - Manual Handtool | 0011215196 |
| IDT Manual Handtool | 0621000400 |

IDT - Semi-automatic 0623000156
- Bench-Top
Terminator
Arbor Press Fixture 0690200770

This document was generated on 05/27/2010

PLEASE CHECK WWW.MOLEX.COM FOR LATEST PART INFORMATION

6

5

4

3

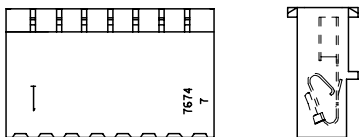
2

1

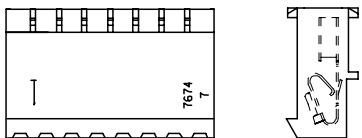
HOUSING TYPE B



HOUSING TYPE C



HOUSING TYPE D



NOTES:

- MATERIAL: HOUSING - UNFILLED NYLON, UL94V-2.
TERMINAL - BRASS
- FINISH:
 - 102: .000200/(0.00508) MIN OVERALL TIN OVER
.000100/(0.00254) MIN COPPER UNDERCOAT.
 - 154: .000100/(0.00254) MIN OVERALL TIN OVER
.000050/(0.00127) MIN NICKEL UNDERCOAT.
 - 502: .000020/(0.00051) MIN OVERALL GOLD OVER
.000050/(0.00127) MIN NICKEL UNDERCOAT.
 - 561: .000030/(0.00076) MIN SELECT GOLD OVER
.000050/(0.00127) MIN NICKEL UNDERCOAT.
- PRODUCT SPECIFICATION: 7660
- PACKAGING: ALL PARTS ARE TO BE BULK PACKED PER PK-7674-001 UNLESS OTHERWISE SPECIFIED IN CHART.
- CHAIN CUTOFF: *A* DIMENSION PLUS .010/(0.25).
- COLOR STRIPE TO RUN LENGTH OF RIB AS SHOWN. SEE CHART FOR COLOR OF STRIPE.
- THIS PART CONFORMS TO CLASS B REQUIREMENTS OF COSMETIC SPECIFICATION PS-45499-002.

HOUSING TYPE

A=7674-AN
B=7674-BN
C=7674-CN
D=7674-DN

A-7674-*N*****-*
NO. OF CKTS

PULLED TERMINAL VOIDS

BLANK= NO VOIDS
NO.= NUMBER CORRESPONDS
TO CKT. NO. VOIDED,
MULTIPLE VOIDS
START WITH 51.

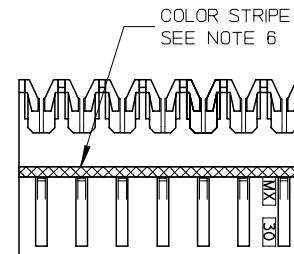
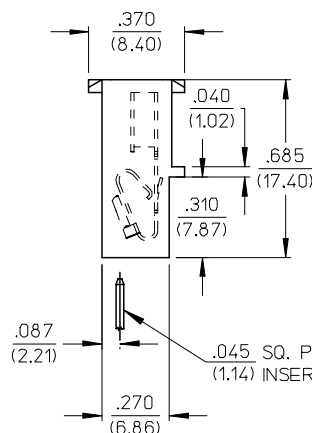
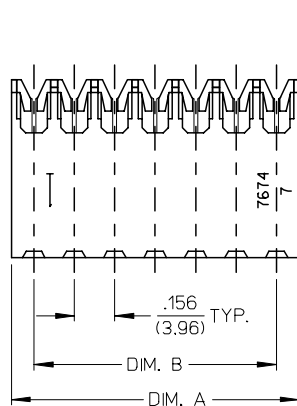
TERMINAL
A=40936

PLATING
SEE NOTE 2.

SLOT SIZE

A= .029/(.74)
M= .025/(.64)
L= .022/(.56)
D= .011/(.28)
J= .015/(.38)

HOUSING TYPE A



COLOR STRIPE
SEE NOTE 6

| COLOR IDENTIFICATION | | TYPE OF WIRE TERMINATED (ALL WIRES HAVE A MAXIMUM INSULATION DIAMETER OF .095/(2.41)) |
|----------------------|--------|--|
| SLOT SIZE | COLOR | |
| A | YELLOW | #18 GA. SOLID OR FUSED STRANDED |
| M | RED | #20 GA. SOLID OR FUSED STRANDED & #18 GA. STRANDED |
| L | BLUE | #20 GA. STRANDED WIRE |
| D | GREEN | #26 & #27 GA. STRANDED, FUSED STRANDED & SOLID WIRE OR #24 GA. STRANDED WIRE |
| J | BLACK | #24 & #22 GA. SOLID OR FUSED STRANDED & #22 GA. STRANDED |

| NO OF CKTS | DIM A | DIM B |
|------------|----------------------------|----------------------------|
| 2 | .330±.007 (8.38±0.18) | .156±.006 (3.96±0.15) |
| 3 | .486±.007 (12.34±0.18) | .312±.006 (7.92±0.15) |
| 4 | .642±.007 (16.31±0.18) | .468±.006 (11.89±0.15) |
| 5 | .798±.008 (20.27±0.20) | .624±.007 (15.85±0.18) |
| 6 | .954±.008 (24.23±0.20) | .780±.007 (19.81±0.18) |
| 7 | 1.110±.009 (28.19±0.23) | .936±.007 (23.77±0.18) |
| 8 | 1.266±.009 (32.16±0.23) | 1.092±.008 (27.74±0.20) |
| 9 | 1.422±.009 (36.12±0.23) | 1.248±.008 (31.70±0.20) |
| 10 | 1.578±.010 (40.08±0.25) | 1.404±.010 (35.66±0.25) |
| 11 | 1.734±.010 (44.04±0.25) | 1.560±.010 (39.62±0.25) |
| 12 | 1.890±.010 (48.00±0.25) | 1.716±.010 (43.59±0.25) |
| 13 | 2.046±.011 (51.97±0.28) | 1.872±.010 (47.55±0.25) |
| 14 | 2.202±.011 (55.93±0.28) | 2.028±.011 (51.51±0.28) |
| 15 | 2.358±.011 (59.89±0.28) | 2.184±.011 (55.47±0.28) |
| 16 | 2.514±.011 (63.86±0.28) | 2.340±.011 (59.44±0.28) |

| | | |
|-------|-----|--------------|
| 2-* | AC1 | GEN DOCS |
| I | AC2 | MICROSTATION |
| SHEET | REV | DOC STYLE |

| | | | | | | | | | | | |
|--|--------------------|-------------------------------|---|-----------------------|--------------------------|----------------------|----------------------------|-------------------|---------------------------|----------------------|---|
| UPDATE DIM. A & B EC NO: UCP2007-1223 DRWN:PRIDDER 2006/11/28 CHKD:ADERR 2006/11/30 APPR:FSMITH 2006/12/05 | DESCRIPTION REV | QUALITY SYMBOLS ▽=0 ▽=0 | GENERAL TOLERANCES (UNLESS SPECIFIED) | | DIMENSION STYLE IN/MM | | SCALE | DESIGN UNITS | THIRD ANGLE PROJECTION | | |
| | | | 4 PLACES ± --- ± --- | 3 PLACES ± --- ± .010 | 2 PLACES ± 0.25 ± .014 | 1 PLACE ± 0.36 ± --- | ANGULAR ± 1/2° | DRAWN BY GUZIK | | DATE 02/12/86 | TITLE .156 CENTER I.D.T. CONN. ASSY |
| | | | DRAFT WHERE APPLICABLE MUST REMAIN WITHIN DIMENSIONS | | SEE CHART | | MATERIAL NO. SDA-7674-* | DOCUMENT NO. | | SHEET NO. 1 OF 12 | |
| | | | THIS DRAWING CONTAINS INFORMATION THAT IS PROPRIETARY TO MOLEX INCORPORATED AND SHOULD NOT BE USED WITHOUT WRITTEN PERMISSION | | MOLEX INCORPORATED | | | | | | |

5

4

3

2

1

| A-7674-ANA102A | | A-7674-BNA102A | | A-7674-CNA102A | | A-7674-DNA102A | |
|-------------------|--------------------------------|-----------------------------|-----------------|-------------------------|-----------------|-------------------------|-------------------|
| HOUSING | 7674-AN | HOUSING | 7674-BN | HOUSING | 7674-CN | HOUSING | 7674-DN |
| TERM. NO | 40936-A(102) | TERM. NO | 40936-A(102) | TERM. NO | 40936-A(102) | TERM. NO | 40936-A(102) |
| PLATING: | 102 | PLATING: | 102 | PLATING: | 102 | PLATING: | 102 |
| COLOR | YELLOW | COLOR | YELLOW | COLOR | YELLOW | COLOR | YELLOW |
| | | | | | | | |
| MATL NO | ENG NO: | MATL NO | ENG NO: | MATL NO | ENG NO: | MATL NO | ENG NO: |
| 09-07-0029 | A-7674-A02A102A | 09-06-0029 | A-7674-B02A102A | 09-07-0020 | A-7674-C02A102A | 09-06-0020 | A-7674-D02A102A |
| 09-07-0039 | A-7674-A03A102A | 09-06-0039 | A-7674-B03A102A | 09-07-0030 | A-7674-C03A102A | 09-06-0030 | A-7674-D03A102A |
| 09-07-0049 | A-7674-A04A102A | 09-06-0049 | A-7674-B04A102A | 09-07-0040 | A-7674-C04A102A | 09-06-0040 | A-7674-D04A102A |
| 09-07-0059 | A-7674-A05A102A | 09-06-0059 | A-7674-B05A102A | 09-07-0050 | A-7674-C05A102A | 09-06-0050 | A-7674-D05A102A |
| 09-07-0069 | A-7674-A06A102A | 09-06-0069 | A-7674-B06A102A | 09-07-0060 | A-7674-C06A102A | 09-06-0060 | A-7674-D06A102A |
| 09-07-0079 | A-7674-A07A102A | 09-06-0079 | A-7674-B07A102A | 09-07-0070 | A-7674-C07A102A | 09-06-0070 | A-7674-D07A102A |
| 09-07-0089 | A-7674-A08A102A | 09-06-0089 | A-7674-B08A102A | 09-07-0080 | A-7674-C08A102A | 09-06-0080 | A-7674-D08A102A |
| 09-07-0099 | A-7674-A09A102A | 09-06-0099 | A-7674-B09A102A | 09-07-0090 | A-7674-C09A102A | 09-06-0090 | A-7674-D09A102A |
| 09-07-0109 | A-7674-A10A102A | 09-06-0109 | A-7674-B10A102A | 09-07-0100 | A-7674-C10A102A | 09-06-0100 | A-7674-D10A102A |
| 09-07-0119 | A-7674-A11A102A | 09-06-0119 | A-7674-B11A102A | 09-07-0110 | A-7674-C11A102A | 09-06-0110 | A-7674-D11A102A |
| 09-07-0129 | A-7674-A12A102A | 09-06-0129 | A-7674-B12A102A | 09-07-0120 | A-7674-C12A102A | 09-06-0120 | A-7674-D12A102A |
| 09-07-0139 | A-7674-A13A102A | 09-06-0139 | A-7674-B13A102A | 09-07-0130 | A-7674-C13A102A | 09-06-0130 | A-7674-D13A102A |
| 09-07-0149 | A-7674-A14A102A | 09-06-0149 | A-7674-B14A102A | 09-07-0140 | A-7674-C14A102A | 09-06-0140 | A-7674-D14A102A |
| 09-07-0159 | A-7674-A15A102A | 09-06-0159 | A-7674-B15A102A | 09-07-0150 | A-7674-C15A102A | 09-06-0150 | A-7674-D15A102A |
| 09-07-0169 | A-7674-A16A102A | 09-06-0169 | A-7674-B16A102A | 09-07-0160 | A-7674-C16A102A | 09-06-0160 | A-7674-D16A102A |
| | | | | | | 09-06-0032 | A-7674-D03A102A-2 |
| | | | | | | | |
| REVISION: | SEE SHEET 1 1/7/2005 | TITLE: | | | | SHEET No. | |
| AC1 | | KK 156 IDT CONNECTOR | | | | 2 | |
| DOCUMENT NUMBER: | | CREATED / REVISED BY: | | CHECKED BY: | | APPROVED BY: | |
| SDA-7674-* | | J.SCHAFFER 3-10-04 | | K.SAMIEC 3-15-04 | | MARGULIS 3-17-04 | |

| A-7674-ANM102A | | A-7674-BNM102A | | | A-7674-CNM102A | | A-7674-DNM102A | | |
|-------------------|-----------------|---------------------------------|-------------------|------|-----------------------------|-----------------|----------------|-------------------------|------|
| HOUSING | 7674-AN | HOUSING | 7674-BN | | HOUSING | 7674-CN | HOUSING | 7674-DN | |
| TERM. NO | 40936-M(102) | TERM. NO | 40936-M(102) | | TERM. NO | 40936-M(102) | TERM. NO | 40936-M(102) | |
| PLATING: | 102 | PLATING: | 102 | | PLATING: | 102 | PLATING: | 102 | |
| COLOR | RED | COLOR | RED | | COLOR | RED | COLOR | RED | |
| MATL NO | ENG NO: | MATL NO | ENG NO: | VOID | MATL NO | ENG NO: | MATL NO | ENG NO: | VOID |
| 09-07-1029 | A-7674-A02M102A | 09-06-1029 | A-7674-B02M102A | | 09-07-1020 | A-7674-C02M102A | 09-06-1020 | A-7674-D02M102A | |
| 09-07-1039 | A-7674-A03M102A | 09-06-1039 | A-7674-B03M102A | | 09-07-1030 | A-7674-C03M102A | 09-06-1030 | A-7674-D03M102A | |
| 09-07-1049 | A-7674-A04M102A | 09-06-1049 | A-7674-B04M102A | | 09-07-1040 | A-7674-C04M102A | 09-06-1040 | A-7674-D04M102A | |
| 09-07-1059 | A-7674-A05M102A | 09-06-1059 | A-7674-B05M102A | | 09-07-1050 | A-7674-C05M102A | 09-06-1050 | A-7674-D05M102A | |
| 09-07-1069 | A-7674-A06M102A | 09-06-1069 | A-7674-B06M102A | | 09-07-1060 | A-7674-C06M102A | 09-06-1060 | A-7674-D06M102A | |
| 09-07-1079 | A-7674-A07M102A | 09-06-1079 | A-7674-B07M102A | | 09-07-1070 | A-7674-C07M102A | 09-06-1070 | A-7674-D07M102A | |
| 09-07-1089 | A-7674-A08M102A | 09-06-1089 | A-7674-B08M102A | | 09-07-1080 | A-7674-C08M102A | 09-06-1080 | A-7674-D08M102A | |
| 09-07-1099 | A-7674-A09M102A | 09-06-1099 | A-7674-B09M102A | | 09-07-1090 | A-7674-C09M102A | 09-06-1090 | A-7674-D09M102A | |
| 09-07-1109 | A-7674-A10M102A | 09-06-1109 | A-7674-B10M102A | | 09-07-1100 | A-7674-C10M102A | 09-06-1100 | A-7674-D10M102A | |
| 09-07-1119 | A-7674-A11M102A | 09-06-1119 | A-7674-B11M102A | | 09-07-1110 | A-7674-C11M102A | 09-06-1110 | A-7674-D11M102A | |
| 09-07-1129 | A-7674-A12M102A | 09-06-1129 | A-7674-B12M102A | | 09-07-1120 | A-7674-C12M102A | 09-06-1120 | A-7674-D12M102A | |
| 09-07-1139 | A-7674-A13M102A | 09-06-1139 | A-7674-B13M102A | | 09-07-1130 | A-7674-C13M102A | 09-06-1130 | A-7674-D13M102A | |
| 09-07-1149 | A-7674-A14M102A | 09-06-1149 | A-7674-B14M102A | | 09-07-1140 | A-7674-C14M102A | 09-06-1140 | A-7674-D14M102A | |
| 09-07-1159 | A-7674-A15M102A | 09-06-1159 | A-7674-B15M102A | | 09-07-1150 | A-7674-C15M102A | 09-06-1150 | A-7674-D15M102A | |
| 09-07-1169 | A-7674-A16M102A | 09-06-1169 | A-7674-B16M102A | | 09-07-1160 | A-7674-C16M102A | 09-06-1160 | A-7674-D16M102A | |
| | | 50-29-1592 | A-7674-B03M102A-2 | | 2 | | 50-29-1591 | A-7674-D03M102A-2 | |
| REVISION: | | TITLE: | | | SHEET No. | | | | |
| AC1 | | SEE SHEET 1 1/7/2005 | | | KK 156 IDT CONNECTOR | | | 3 | |
| DOCUMENT NUMBER: | | CREATED / REVISED BY: | | | CHECKED BY: | | | APPROVED BY: | |
| SDA-7674-* | | J.SCHAFFER 3-10-04 | | | K.SAMIEC 3-15-04 | | | MARGULIS 3-17-04 | |

| A-7674-ANL102A | | A-7674-BNL102A | | A-7674-CNL102A | | A-7674-DNL102A | | |
|-------------------|--------------------------------|---------------------------|-----------------------------|-------------------------|-----------------|----------------|-----------------|--|
| HOUSING | 7674-AN | HOUSING | 7674-BN | HOUSING | 7674-CN | HOUSING | 7674-DN | |
| TERM. NO | 40936-L(102) | TERM. NO | 40936-L(102) | TERM. NO | 40936-L(102) | TERM. NO | 40936-L(102) | |
| PLATING: | 102 | PLATING: | 102 | PLATING: | 102 | PLATING: | 102 | |
| COLOR | BLUE | COLOR | BLUE | COLOR | BLUE | COLOR | BLUE | |
| MATL NO | ENG NO: | MATL NO | ENG NO: | MATL NO | ENG NO: | MATL NO | ENG NO: | |
| 09-07-2029 | A-7674-A02L102A | 09-06-2029 | A-7674-B02L102A | 09-07-2020 | A-7674-C02L102A | 09-06-2020 | A-7674-D02L102A | |
| 09-07-2039 | A-7674-A03L102A | 09-06-2039 | A-7674-B03L102A | 09-07-2030 | A-7674-C03L102A | 09-06-2030 | A-7674-D03L102A | |
| 09-07-2049 | A-7674-A04L102A | 09-06-2049 | A-7674-B04L102A | 09-07-2040 | A-7674-C04L102A | 09-06-2040 | A-7674-D04L102A | |
| 09-07-2059 | A-7674-A05L102A | 09-06-2059 | A-7674-B05L102A | 09-07-2050 | A-7674-C05L102A | 09-06-2050 | A-7674-D05L102A | |
| 09-07-2069 | A-7674-A06L102A | 09-06-2069 | A-7674-B06L102A | 09-07-2060 | A-7674-C06L102A | 09-06-2060 | A-7674-D06L102A | |
| 09-07-2079 | A-7674-A07L102A | 09-06-2079 | A-7674-B07L102A | 09-07-2070 | A-7674-C07L102A | 09-06-2070 | A-7674-D07L102A | |
| 09-07-2089 | A-7674-A08L102A | 09-06-2089 | A-7674-B08L102A | 09-07-2080 | A-7674-C08L102A | 09-06-2080 | A-7674-D08L102A | |
| 09-07-2099 | A-7674-A09L102A | 09-06-2099 | A-7674-B09L102A | 09-07-2090 | A-7674-C09L102A | 09-06-2090 | A-7674-D09L102A | |
| 09-07-2109 | A-7674-A10L102A | 09-06-2109 | A-7674-B10L102A | 09-07-2100 | A-7674-C10L102A | 09-06-2100 | A-7674-D10L102A | |
| 09-07-2119 | A-7674-A11L102A | 09-06-2119 | A-7674-B11L102A | 09-07-2110 | A-7674-C11L102A | 09-06-2110 | A-7674-D11L102A | |
| 09-07-2129 | A-7674-A12L102A | 09-06-2129 | A-7674-B12L102A | 09-07-2120 | A-7674-C12L102A | 09-06-2120 | A-7674-D12L102A | |
| 09-07-2139 | A-7674-A13L102A | 09-06-2139 | A-7674-B13L102A | 09-07-2130 | A-7674-C13L102A | 09-06-2130 | A-7674-D13L102A | |
| 09-07-2149 | A-7674-A14L102A | 09-06-2149 | A-7674-B14L102A | 09-07-2140 | A-7674-C14L102A | 09-06-2140 | A-7674-D14L102A | |
| 09-07-2159 | A-7674-A15L102A | 09-06-2159 | A-7674-B15L102A | 09-07-2150 | A-7674-C15L102A | 09-06-2150 | A-7674-D15L102A | |
| 09-07-2169 | A-7674-A16L102A | 09-06-2169 | A-7674-B16L102A | 09-07-2160 | A-7674-C16L102A | 09-06-2160 | A-7674-D16L102A | |
| | | | | | | | | |
| REVISION: | SEE SHEET 1 1/7/2005 | TITLE: | KK 156 IDT CONNECTOR | | | | SHEET No. | |
| AC1 | | | | | | | 4 | |
| DOCUMENT NUMBER: | | CREATED / REVISED BY: | CHECKED BY: | APPROVED BY: | | | | |
| SDA-7674-* | | J.SCHAFFER 3-10-04 | K.SAMIEC 3-15-04 | MARGULIS 3-17-04 | | | | |

| A-7674-AND102A | | A-7674-BND102A | | A-7674-CND102A | | A-7674-DND102A | |
|-------------------|--------------------------------|-----------------------------|-----------------|-------------------------|-----------------|-------------------------|-----------------|
| HOUSING | 7674-AN | HOUSING | 7674-BN | HOUSING | 7674-CN | HOUSING | 7674-DN |
| TERM. NO | 40936-D(102) | TERM. NO | 40936-D(102) | TERM. NO | 40936-D(102) | TERM. NO | 40936-D(102) |
| PLATING: | 102 | PLATING: | 102 | PLATING: | 102 | PLATING: | 102 |
| COLOR | GREEN | COLOR | GREEN | COLOR | GREEN | COLOR | GREEN |
| MATL NO | ENG NO: | MATL NO | ENG NO: | MATL NO | ENG NO: | MATL NO | ENG NO: |
| 09-07-3029 | A-7674-A02D102A | 09-06-3029 | A-7674-B02D102A | 09-07-3020 | A-7674-C02D102A | 09-06-3020 | A-7674-D02D102A |
| 09-07-3039 | A-7674-A03D102A | 09-06-3039 | A-7674-B03D102A | 09-07-3030 | A-7674-C03D102A | 09-06-3030 | A-7674-D03D102A |
| 09-07-3049 | A-7674-A04D102A | 09-06-3049 | A-7674-B04D102A | 09-07-3040 | A-7674-C04D102A | 09-06-3040 | A-7674-D04D102A |
| 09-07-3059 | A-7674-A05D102A | 09-06-3059 | A-7674-B05D102A | 09-07-3050 | A-7674-C05D102A | 09-06-3050 | A-7674-D05D102A |
| 09-07-3069 | A-7674-A06D102A | 09-06-3069 | A-7674-B06D102A | 09-07-3060 | A-7674-C06D102A | 09-06-3060 | A-7674-D06D102A |
| 09-07-3079 | A-7674-A07D102A | 09-06-3079 | A-7674-B07D102A | 09-07-3070 | A-7674-C07D102A | 09-06-3070 | A-7674-D07D102A |
| 09-07-3089 | A-7674-A08D102A | 09-06-3089 | A-7674-B08D102A | 09-07-3080 | A-7674-C08D102A | 09-06-3080 | A-7674-D08D102A |
| 09-07-3099 | A-7674-A09D102A | 09-06-3099 | A-7674-B09D102A | 09-07-3090 | A-7674-C09D102A | 09-06-3090 | A-7674-D09D102A |
| 09-07-3109 | A-7674-A10D102A | 09-06-3109 | A-7674-B10D102A | 09-07-3100 | A-7674-C10D102A | 09-06-3100 | A-7674-D10D102A |
| 09-07-3119 | A-7674-A11D102A | 09-06-3119 | A-7674-B11D102A | 09-07-3110 | A-7674-C11D102A | 09-06-3110 | A-7674-D11D102A |
| 09-07-3129 | A-7674-A12D102A | 09-06-3129 | A-7674-B12D102A | 09-07-3120 | A-7674-C12D102A | 09-06-3120 | A-7674-D12D102A |
| 09-07-3139 | A-7674-A13D102A | 09-06-3139 | A-7674-B13D102A | 09-07-3130 | A-7674-C13D102A | 09-06-3130 | A-7674-D13D102A |
| 09-07-3149 | A-7674-A14D102A | 09-06-3149 | A-7674-B14D102A | 09-07-3140 | A-7674-C14D102A | 09-06-3140 | A-7674-D14D102A |
| 09-07-3159 | A-7674-A15D102A | 09-06-3159 | A-7674-B15D102A | 09-07-3150 | A-7674-C15D102A | 09-06-3150 | A-7674-D15D102A |
| 09-07-3169 | A-7674-A16D102A | 09-06-3169 | A-7674-B16D102A | 09-07-3160 | A-7674-C16D102A | 09-06-3160 | A-7674-D16D102A |
| | | | | | | | |
| REVISION: | SEE SHEET 1 1/7/2005 | TITLE: | | | | | SHEET No. |
| AC1 | | KK 156 IDT CONNECTOR | | | | | 5 |
| DOCUMENT NUMBER: | | CREATED / REVISED BY: | | CHECKED BY: | | APPROVED BY: | |
| SDA-7674-* | | J.SCHAFFER 3-10-04 | | K.SAMIEC 3-15-04 | | MARGULIS 3-17-04 | |

| A-7674-ANJ102A | | A-7674-BNJ102A | | A-7674-CNJ102A | | | A-7674-DNJ102A | |
|------------------|-------------------|---------------------------------|-----------------------------|----------------|-------------------------|--------------------------|-------------------------|-----------------|
| HOUSING | 7674-AN | HOUSING | 7674-BN | HOUSING | 7674-CN | | HOUSING | 7674-DN |
| TERM. NO | 40936-J(102) | TERM. NO | 40936-J(102) | TERM. NO | 40936-J(102) | | TERM. NO | 40936-J(102) |
| PLATING: | 102 | PLATING: | 102 | PLATING: | 102 | | PLATING: | 102 |
| COLOR | BLACK | COLOR | BLACK | COLOR | BLACK | | COLOR | BLACK |
| MATL NO | ENG NO: | MATL NO | ENG NO: | MATL NO | ENG NO: | VOID | MATL NO | ENG NO: |
| 09-07-5029 | A-7674-A02J102A | 09-06-5029 | A-7674-B02J102A | 09-07-5020 | A-7674-C02J102A | | 09-06-5020 | A-7674-D02J102A |
| 09-07-5039 | A-7674-A03J102A | 09-06-5039 | A-7674-B03J102A | 09-07-5030 | A-7674-C03J102A | | 09-06-5030 | A-7674-D03J102A |
| 09-07-5049 | A-7674-A04J102A | 09-06-5049 | A-7674-B04J102A | 09-07-5040 | A-7674-C04J102A | | 09-06-5040 | A-7674-D04J102A |
| 09-07-5059 | A-7674-A05J102A | 09-06-5059 | A-7674-B05J102A | 09-07-5050 | A-7674-C05J102A | | 09-06-5050 | A-7674-D05J102A |
| 09-07-5069 | A-7674-A06J102A | 09-06-5069 | A-7674-B06J102A | 09-07-5060 | A-7674-C06J102A | | 09-06-5060 | A-7674-D06J102A |
| 09-07-5079 | A-7674-A07J102A | 09-06-5079 | A-7674-B07J102A | 09-07-5070 | A-7674-C07J102A | | 09-06-5070 | A-7674-D07J102A |
| 09-07-5089 | A-7674-A08J102A | 09-06-5089 | A-7674-B08J102A | 09-07-5080 | A-7674-C08J102A | | 09-06-5080 | A-7674-D08J102A |
| 09-07-5099 | A-7674-A09J102A | 09-06-5099 | A-7674-B09J102A | 09-07-5090 | A-7674-C09J102A | | 09-06-5090 | A-7674-D09J102A |
| 09-07-5109 | A-7674-A10J102A | 09-06-5109 | A-7674-B10J102A | 09-07-5100 | A-7674-C10J102A | | 09-06-5100 | A-7674-D10J102A |
| 09-07-5119 | A-7674-A11J102A | 09-06-5119 | A-7674-B11J102A | 09-07-5110 | A-7674-C11J102A | | 09-06-5110 | A-7674-D11J102A |
| 09-07-5129 | A-7674-A12J102A | 09-06-5129 | A-7674-B12J102A | 09-07-5120 | A-7674-C12J102A | | 09-06-5120 | A-7674-D12J102A |
| 09-07-5139 | A-7674-A13J102A | 09-06-5139 | A-7674-B13J102A | 09-07-5130 | A-7674-C13J102A | | 09-06-5130 | A-7674-D13J102A |
| 09-07-5149 | A-7674-A14J102A | 09-06-5149 | A-7674-B14J102A | 09-07-5140 | A-7674-C14J102A | | 09-06-5140 | A-7674-D14J102A |
| 09-07-5159 | A-7674-A15J102A | 09-06-5159 | A-7674-B15J102A | 09-07-5150 | A-7674-C15J102A | | 09-06-5150 | A-7674-D15J102A |
| 09-07-5169 | A-7674-A16J102A | 09-06-5169 | A-7674-B16J102A | 09-07-5160 | A-7674-C16J102A | | 09-06-5160 | A-7674-D16J102A |
| | | | | 09-10-2156 | A-7674-C15J102A-51 | 2,4,6,8, 10,12, 14 | | |
| | | | | 09-10-2117 | A-7674-C11J102A-51 | 2,4,6,8, 10 | | |
| REVISION: | AC1 | TITLE: | KK 156 IDT CONNECTOR | | | | SHEET No. | 6 |
| | | SEE SHEET 1 1/7/2005 | | | | | | |
| DOCUMENT NUMBER: | SDA-7674-* | CREATED / REVISED BY: | J.SCHAFFER 3-10-04 | CHECKED BY: | K.SAMIEC 3-15-04 | APPROVED BY: | MARGULIS 3-17-04 | |

| A-7674-ANA502A | | A-7674-BNA502A | | A-7674-CNA502A | | A-7674-DNA502A | | |
|------------------|-------------------|---------------------------------|-----------------------------|----------------|-------------------------|----------------|-------------------------|----------|
| HOUSING | 7674-AN | HOUSING | 7674-BN | HOUSING | 7674-CN | HOUSING | 7674-DN | |
| TERM. NO | 40936-A(502) | TERM. NO | 40936-A(502) | TERM. NO | 40936-A(502) | TERM. NO | 40936-A(502) | |
| PLATING: | 502 | PLATING: | 502 | PLATING: | 502 | PLATING: | 502 | |
| COLOR | YELLOW | COLOR | YELLOW | COLOR | YELLOW | COLOR | YELLOW | |
| MATL NO | ENG NO: | MATL NO | ENG NO: | MATL NO | ENG NO: | MATL NO | ENG NO: | |
| | A-7674-A02A502A | | A-7674-B02A502A | | A-7674-C02A502A | 26-32-4024 | A-7674-D02A502A | |
| | A-7674-A03A502A | | A-7674-B03A502A | | A-7674-C03A502A | 26-32-4034 | A-7674-D03A502A | |
| | A-7674-A04A502A | | A-7674-B04A502A | | A-7674-C04A502A | 26-32-4044 | A-7674-D04A502A | |
| | A-7674-A05A502A | | A-7674-B05A502A | | A-7674-C05A502A | 26-32-4054 | A-7674-D05A502A | |
| | A-7674-A06A502A | | A-7674-B06A502A | | A-7674-C06A502A | 26-32-4064 | A-7674-D06A502A | |
| | A-7674-A07A502A | | A-7674-B07A502A | | A-7674-C07A502A | 26-32-4074 | A-7674-D07A502A | |
| | A-7674-A08A502A | | A-7674-B08A502A | | A-7674-C08A502A | 26-32-4084 | A-7674-D08A502A | |
| | A-7674-A09A502A | | A-7674-B09A502A | | A-7674-C09A502A | 26-32-4094 | A-7674-D09A502A | |
| | A-7674-A10A502A | | A-7674-B10A502A | | A-7674-C10A502A | 26-32-4104 | A-7674-D10A502A | |
| | A-7674-A11A502A | | A-7674-B11A502A | | A-7674-C11A502A | 26-32-4114 | A-7674-D11A502A | |
| | A-7674-A12A502A | | A-7674-B12A502A | | A-7674-C12A502A | 26-32-4124 | A-7674-D12A502A | |
| | A-7674-A13A502A | | A-7674-B13A502A | | A-7674-C13A502A | 26-32-4134 | A-7674-D13A502A | |
| | A-7674-A14A502A | | A-7674-B14A502A | | A-7674-C14A502A | 26-32-4144 | A-7674-D14A502A | |
| | A-7674-A15A502A | | A-7674-B15A502A | | A-7674-C15A502A | 26-32-4154 | A-7674-D15A502A | |
| | A-7674-A16A502A | | A-7674-B16A502A | | A-7674-C16A502A | 26-32-4164 | A-7674-D16A502A | |
| REVISION: | AC1 | TITLE: | KK 156 IDT CONNECTOR | | | | SHEET No. | 7 |
| | | SEE SHEET 1 1/7/2005 | | | | | | |
| DOCUMENT NUMBER: | SDA-7674-* | CREATED / REVISED BY: | J.SCHAFFER 3-10-04 | CHECKED BY: | K.SAMIEC 3-15-04 | APPROVED BY: | MARGULIS 3-17-04 | |

| A-7674-ANM502A | | A-7674-BNM502A | | A-7674-CNM502A | | A-7674-DNM502A | |
|----------------|-----------------|----------------|-----------------|----------------|-----------------|----------------|-----------------|
| HOUSING | 7674-AN | HOUSING | 7674-BN | HOUSING | 7674-CN | HOUSING | 7674-DN |
| TERM. NO | 40936-M(502) | TERM. NO | 40936-M(502) | TERM. NO | 40936-M(502) | TERM. NO | 40936-M(502) |
| PLATING: | 502 | PLATING: | 502 | PLATING: | 502 | PLATING: | 502 |
| COLOR | RED | COLOR | RED | COLOR | RED | COLOR | RED |
| MATL NO | ENG NO: | MATL NO | ENG NO: | MATL NO | ENG NO: | MATL NO | ENG NO: |
| | A-7674-A02M502A | | A-7674-B02M502A | | A-7674-C02M502A | | A-7674-D02M502A |
| | A-7674-A03M502A | | A-7674-B03M502A | | A-7674-C03M502A | 26-32-6034 | A-7674-D03M502A |
| | A-7674-A04M502A | | A-7674-B04M502A | | A-7674-C04M502A | 26-32-6044 | A-7674-D04M502A |
| | A-7674-A05M502A | | A-7674-B05M502A | | A-7674-C05M502A | | A-7674-D05M502A |
| | A-7674-A06M502A | | A-7674-B06M502A | | A-7674-C06M502A | 26-32-6064 | A-7674-D06M502A |
| | A-7674-A07M502A | | A-7674-B07M502A | | A-7674-C07M502A | 26-32-6074 | A-7674-D07M502A |
| | A-7674-A08M502A | | A-7674-B08M502A | | A-7674-C08M502A | | A-7674-D08M502A |
| | A-7674-A09M502A | | A-7674-B09M502A | | A-7674-C09M502A | | A-7674-D09M502A |
| | A-7674-A10M502A | | A-7674-B10M502A | | A-7674-C10M502A | 26-32-6104 | A-7674-D10M502A |
| | A-7674-A11M502A | 26-32-4111 | A-7674-B11M502A | | A-7674-C11M502A | | A-7674-D11M502A |
| | A-7674-A12M502A | | A-7674-B12M502A | | A-7674-C12M502A | | A-7674-D12M502A |
| | A-7674-A13M502A | | A-7674-B13M502A | | A-7674-C13M502A | | A-7674-D13M502A |
| | A-7674-A14M502A | | A-7674-B14M502A | | A-7674-C14M502A | | A-7674-D14M502A |
| | A-7674-A15M502A | | A-7674-B15M502A | | A-7674-C15M502A | | A-7674-D15M502A |
| | A-7674-A16M502A | | A-7674-B16M502A | | A-7674-C16M502A | | A-7674-D16M502A |

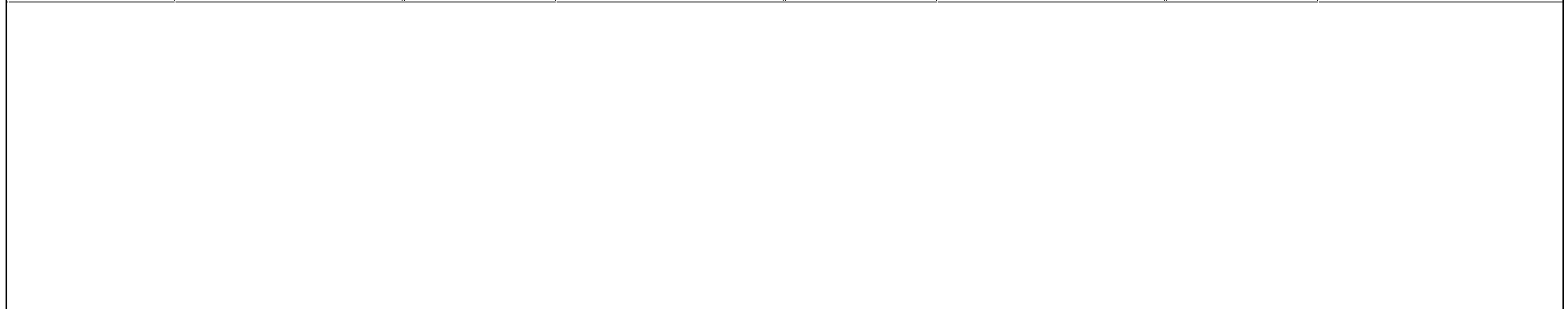
| | | | | | |
|------------------|-------------------|-----------------------|-----------------------------|--------------|-------------------------|
| REVISION: | AC1 | TITLE: | KK 156 IDT CONNECTOR | SHEET No. | 8 |
| DOCUMENT NUMBER: | SDA-7674-* | CREATED / REVISED BY: | J.SCHAFFER 3-10-04 | CHECKED BY: | K.SAMIEC 3-15-04 |
| | | | | APPROVED BY: | MARGULIS 3-17-04 |

| A-7674-ANL502A | | A-7674-BNL502A | | A-7674-CNL502A | | A-7674-DNL502A | | |
|-------------------|--------------------------------|-----------------------------|-----------------|-------------------------|-----------------|-------------------------|-----------------|--|
| HOUSING | 7674-AN | HOUSING | 7674-BN | HOUSING | 7674-CN | HOUSING | 7674-DN | |
| TERM. NO | 40936-L(502) | TERM. NO | 40936-L(502) | TERM. NO | 40936-L(502) | TERM. NO | 40936-L(502) | |
| PLATING: | 502 | PLATING: | 502 | PLATING: | 502 | PLATING: | 502 | |
| COLOR | BLUE | COLOR | BLUE | COLOR | BLUE | COLOR | BLUE | |
| | | | | | | | | |
| MATL NO | ENG NO: | MATL NO | ENG NO: | MATL NO | ENG NO: | MATL NO | ENG NO: | |
| 26-32-2024 | A-7674-A02L502A | | A-7674-B02L502A | | A-7674-C02L502A | 26-32-2022 | A-7674-D02L502A | |
| 26-32-2034 | A-7674-A03L502A | | A-7674-B03L502A | | A-7674-C03L502A | 26-32-2032 | A-7674-D03L502A | |
| 26-32-2044 | A-7674-A04L502A | | A-7674-B04L502A | | A-7674-C04L502A | 26-32-2042 | A-7674-D04L502A | |
| 26-32-2054 | A-7674-A05L502A | | A-7674-B05L502A | | A-7674-C05L502A | 26-32-2052 | A-7674-D05L502A | |
| 26-32-2064 | A-7674-A06L502A | | A-7674-B06L502A | | A-7674-C06L502A | 26-32-2062 | A-7674-D06L502A | |
| 26-32-2074 | A-7674-A07L502A | | A-7674-B07L502A | | A-7674-C07L502A | 26-32-2072 | A-7674-D07L502A | |
| 26-32-2084 | A-7674-A08L502A | | A-7674-B08L502A | | A-7674-C08L502A | 26-32-2082 | A-7674-D08L502A | |
| 26-32-2094 | A-7674-A09L502A | | A-7674-B09L502A | | A-7674-C09L502A | 26-32-2092 | A-7674-D09L502A | |
| 26-32-2104 | A-7674-A10L502A | | A-7674-B10L502A | | A-7674-C10L502A | 26-32-2102 | A-7674-D10L502A | |
| 26-32-2114 | A-7674-A11L502A | | A-7674-B11L502A | | A-7674-C11L502A | 26-32-2112 | A-7674-D11L502A | |
| 26-32-2124 | A-7674-A12L502A | | A-7674-B12L502A | | A-7674-C12L502A | 26-32-2122 | A-7674-D12L502A | |
| 26-32-2134 | A-7674-A13L502A | | A-7674-B13L502A | | A-7674-C13L502A | 26-32-2132 | A-7674-D13L502A | |
| 26-32-2144 | A-7674-A14L502A | | A-7674-B14L502A | | A-7674-C14L502A | 26-32-2142 | A-7674-D14L502A | |
| 26-32-2154 | A-7674-A15L502A | | A-7674-B15L502A | | A-7674-C15L502A | 26-32-2152 | A-7674-D15L502A | |
| 26-32-2164 | A-7674-A16L502A | | A-7674-B16L502A | | A-7674-C16L502A | 26-32-2162 | A-7674-D16L502A | |
| | | | | | | | | |
| REVISION: | SEE SHEET 1 1/7/2005 | TITLE: | | | | | SHEET No. | |
| AC1 | | KK 156 IDT CONNECTOR | | | | | 9 | |
| DOCUMENT NUMBER: | | CREATED / REVISED BY: | | CHECKED BY: | | APPROVED BY: | | |
| SDA-7674-* | | J.SCHAFFER 3-10-04 | | K.SAMIEC 3-15-04 | | MARGULIS 3-17-04 | | |

| A-7674-ANJ502A | | A-7674-BNJ502A | | A-7674-CNJ502A | | A-7674-DNJ502A | | |
|------------------|-------------------|---------------------------------|-----------------------------|----------------|-------------------------|----------------|-------------------------|-----------|
| HOUSING | 7674-AN | HOUSING | 7674-BN | HOUSING | 7674-CN | HOUSING | 7674-DN | |
| TERM. NO | 40936-J(502) | TERM. NO | 40936-J(502) | TERM. NO | 40936-J(502) | TERM. NO | 40936-J(502) | |
| PLATING: | 502 | PLATING: | 502 | PLATING: | 502 | PLATING: | 502 | |
| COLOR | BLACK | COLOR | BLACK | COLOR | BLACK | COLOR | BLACK | |
| | | | | | | | | |
| MATL NO | ENG NO: | MATL NO | ENG NO: | MATL NO | ENG NO: | MATL NO | ENG NO: | |
| | A-7674-A02J502A | 26-32-1027 | A-7674-B02J502A | | A-7674-C02J502A | 26-32-1025 | A-7674-D02J502A | |
| | A-7674-A03J502A | 26-32-1037 | A-7674-B03J502A | | A-7674-C03J502A | 26-32-1035 | A-7674-D03J502A | |
| | A-7674-A04J502A | 26-32-1047 | A-7674-B04J502A | | A-7674-C04J502A | 26-32-1049 | A-7674-D04J502A | |
| | A-7674-A05J502A | 26-32-1057 | A-7674-B05J502A | | A-7674-C05J502A | 26-32-1059 | A-7674-D05J502A | |
| | A-7674-A06J502A | 26-32-1067 | A-7674-B06J502A | 26-32-1063 | A-7674-C06J502A | 26-32-1069 | A-7674-D06J502A | |
| | A-7674-A07J502A | 26-32-1077 | A-7674-B07J502A | | A-7674-C07J502A | 26-32-1079 | A-7674-D07J502A | |
| | A-7674-A08J502A | 26-32-1087 | A-7674-B08J502A | | A-7674-C08J502A | 26-32-1089 | A-7674-D08J502A | |
| | A-7674-A09J502A | 26-32-1097 | A-7674-B09J502A | | A-7674-C09J502A | 26-32-1099 | A-7674-D09J502A | |
| | A-7674-A10J502A | 26-32-1107 | A-7674-B10J502A | | A-7674-C10J502A | 26-32-1109 | A-7674-D10J502A | |
| | A-7674-A11J502A | 26-32-1117 | A-7674-B11J502A | | A-7674-C11J502A | 26-32-1119 | A-7674-D11J502A | |
| | A-7674-A12J502A | 26-32-1127 | A-7674-B12J502A | | A-7674-C12J502A | 26-32-1129 | A-7674-D12J502A | |
| | A-7674-A13J502A | 26-32-1137 | A-7674-B13J502A | | A-7674-C13J502A | 26-32-1139 | A-7674-D13J502A | |
| | A-7674-A14J502A | 26-32-1147 | A-7674-B14J502A | | A-7674-C14J502A | 26-32-1149 | A-7674-D14J502A | |
| | A-7674-A15J502A | 26-32-1157 | A-7674-B15J502A | | A-7674-C15J502A | 26-32-1159 | A-7674-D15J502A | |
| | A-7674-A16J502A | 26-32-1167 | A-7674-B16J502A | | A-7674-C16J502A | 26-32-1169 | A-7674-D16J502A | |
| REVISION: | AC1 | TITLE: | KK 156 IDT CONNECTOR | | | | SHEET No. | 10 |
| | | SEE SHEET 1 1/7/2005 | | | | | | |
| DOCUMENT NUMBER: | SDA-7674-* | CREATED / REVISED BY: | J.SCHAFFER 3-10-04 | CHECKED BY: | K.SAMIEC 3-15-04 | APPROVED BY: | MARGULIS 3-17-04 | |

| A-7674-ANJ561A | | A-7674-BNJ561A | | A-7674-CNJ561A | | A-7674-DNJ561A | | |
|--|--------------------------------|----------------|---|----------------|---|----------------|--|--|
| HOUSING | 7674-AN | HOUSING | 7674-BN | HOUSING | 7674-CN | HOUSING | 7674-DN | |
| TERM. NO | 40936-J(561) | TERM. NO | 40936-J(561) | TERM. NO | 40936-J(561) | TERM. NO | 40936-J(561) | |
| PLATING: | 561 | PLATING: | 561 | PLATING: | 561 | PLATING: | 561 | |
| COLOR | BLACK | COLOR | BLACK | COLOR | BLACK | COLOR | BLACK | |
| | | | | | | | | |
| MATL NO | ENG NO: | MATL NO | ENG NO: | MATL NO | ENG NO: | MATL NO | ENG NO: | |
| | A-7674-A02J561A | | A-7674-B02J561A | | A-7674-C02J561A | | A-7674-D02J561A | |
| | A-7674-A03J561A | | A-7674-B03J561A | | A-7674-C03J561A | | A-7674-D03J561A | |
| | A-7674-A04J561A | | A-7674-B04J561A | | A-7674-C04J561A | | A-7674-D04J561A | |
| | A-7674-A05J561A | | A-7674-B05J561A | | A-7674-C05J561A | | A-7674-D05J561A | |
| | A-7674-A06J561A | | A-7674-B06J561A | | A-7674-C06J561A | | A-7674-D06J561A | |
| | A-7674-A07J561A | | A-7674-B07J561A | | A-7674-C07J561A | | A-7674-D07J561A | |
| | A-7674-A08J561A | | A-7674-B08J561A | | A-7674-C08J561A | | A-7674-D08J561A | |
| | A-7674-A09J561A | | A-7674-B09J561A | | A-7674-C09J561A | | A-7674-D09J561A | |
| | A-7674-A10J561A | | A-7674-B10J561A | | A-7674-C10J561A | | A-7674-D10J561A | |
| | A-7674-A11J561A | | A-7674-B11J561A | | A-7674-C11J561A | | A-7674-D11J561A | |
| | A-7674-A12J561A | | A-7674-B12J561A | | A-7674-C12J561A | | A-7674-D12J561A | |
| | A-7674-A13J561A | | A-7674-B13J561A | | A-7674-C13J561A | | A-7674-D13J561A | |
| | A-7674-A14J561A | | A-7674-B14J561A | | A-7674-C14J561A | | A-7674-D14J561A | |
| | A-7674-A15J561A | | A-7674-B15J561A | | A-7674-C15J561A | | A-7674-D15J561A | |
| | A-7674-A16J561A | | A-7674-B16J561A | | A-7674-C16J561A | 50-29-1556 | A-7674-D16J561A | |
| | | | | | | | | |
| REVISION: | SEE SHEET 1 1/7/2005 | | <u>TITLE:</u> KK 156 IDT CONNECTOR | | | | SHEET No. 11 | |
| <u>DOCUMENT NUMBER:</u> SDA-7674-* | | | <u>CREATED / REVISED BY:</u> J.SCHAFFER 3-10-04 | | <u>CHECKED BY:</u> K.SAMIEC 3-15-04 | | <u>APPROVED BY:</u> MARGULIS 3-17-04 | |

| A-7674-ANM154A | | A-7674-BNM154A | | A-7674-CNM154A | | A-7674-DNM154A | |
|----------------|--------------|----------------|--------------|----------------|-----------------|----------------|-----------------|
| HOUSING | 7674-AN | HOUSING | 7674-BN | HOUSING | 7674-CN | HOUSING | 7674-DN |
| TERM. NO | 40936-M(154) | TERM. NO | 40936-M(154) | TERM. NO | 40936-M(154) | TERM. NO | 40936-M(154) |
| PLATING: | 154 | PLATING: | 154 | PLATING: | 154 | PLATING: | 154 |
| COLOR | RED | COLOR | RED | COLOR | RED | COLOR | RED |
| | | | | | | | |
| MATL NO | ENG NO: | MATL NO | ENG NO: | MATL NO | ENG NO: | MATL NO | ENG NO: |
| | | | | 50-29-1972 | A-7674-C02M154A | 50-29-1987 | A-7674-D02M154A |
| | | | | 50-29-1973 | A-7674-C03M154A | 50-29-1988 | A-7674-D03M154A |
| | | | | 50-29-1974 | A-7674-C04M154A | 50-29-1989 | A-7674-D04M154A |
| | | | | 50-29-1975 | A-7674-C05M154A | 50-29-1990 | A-7674-D05M154A |
| | | | | 50-29-1976 | A-7674-C06M154A | 50-29-1991 | A-7674-D06M154A |
| | | | | 50-29-1977 | A-7674-C07M154A | 50-29-1992 | A-7674-D07M154A |
| | | | | 50-29-1978 | A-7674-C08M154A | 50-29-1993 | A-7674-D08M154A |
| | | | | 50-29-1979 | A-7674-C09M154A | 50-29-1994 | A-7674-D09M154A |
| | | | | 50-29-1980 | A-7674-C10M154A | 50-29-1995 | A-7674-D10M154A |
| | | | | 50-29-1981 | A-7674-C11M154A | 50-29-1996 | A-7674-D11M154A |
| | | | | 50-29-1982 | A-7674-C12M154A | 50-29-1997 | A-7674-D12M154A |
| | | | | 50-29-1983 | A-7674-C13M154A | 50-29-1998 | A-7674-D13M154A |
| | | | | 50-29-1984 | A-7674-C14M154A | 50-29-1999 | A-7674-D14M154A |
| | | | | 50-29-1985 | A-7674-C15M154A | 50-29-2000 | A-7674-D15M154A |
| | | | | 50-29-1986 | A-7674-C16M154A | 50-29-2001 | A-7674-D16M154A |



| | | | |
|-------------------------|-------------------------|---------------------------------------|------------------------|
| REVISION: AC1 | SEE SHEET 1 1/7/2005 | TITLE: KK 156 IDT CONNECTOR | SHEET No. 12 |
|-------------------------|-------------------------|---------------------------------------|------------------------|

| | | | |
|---------------------------------------|--|--|---|
| DOCUMENT NUMBER: SDA-7674-* | CREATED / REVISED BY: J.SCHAFFER 3-10-04 | CHECKED BY: K.SAMIEC 3-15-04 | APPROVED BY: MARGULIS 3-17-04 |
|---------------------------------------|--|--|---|