

PLEASE CHECK WWW.MOLEX.COM FOR LATEST PART INFORMATION

Part Number: [0442624636](#)
Status: **Active**
Description: 9.14mm (.360") Pitch Crimp Terminal, Power Contact, Tin (Sn), All Over Nickel (Ni) with Select Gold, 10-12 AWG

Documents:

[Drawing \(PDF\)](#) [RoHS Certificate of Compliance \(PDF\)](#)

General

| | |
|-------------------------|-----------------------|
| Product Family | Crimp Terminals |
| Series | 44262 |
| Crimp Quality Equipment | Yes |
| Product Name | N/A |

Physical

| | |
|--------------------------------|------------------------------|
| Durability (mating cycles max) | 500 |
| Gender | Female |
| Material - Metal | High Performance Alloy (HPA) |
| Material - Plating Mating | Tin |
| Packaging Type | Reel |
| Termination Interface: Style | Crimp or Compression |
| Wire Insulation Diameter | 1.52-3.30mm (.060-.130") |
| Wire Size AWG | 14, 16 |
| Wire Size mm ² | N/A |

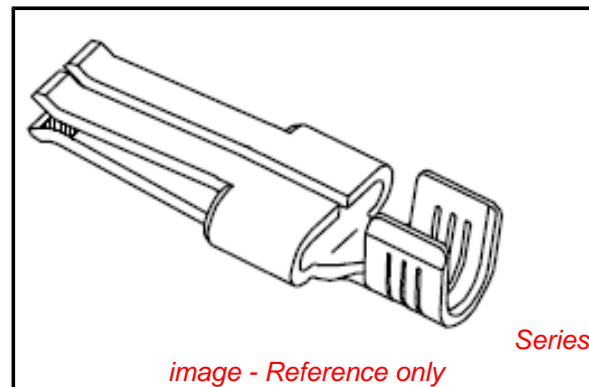
Electrical

| | |
|-------------------------------|---------|
| Current - Maximum per Contact | 20A |
| Voltage - Maximum | 600V AC |

Material Info

Reference - Drawing Numbers

| | |
|---------------|--------------|
| Sales Drawing | SD-44262-100 |
|---------------|--------------|



EU RoHS

**ELV and RoHS
Compliant**
**REACH SVHC
Contains SVHC: No**
**Halogen-Free
Status
Not Reviewed**

China RoHS



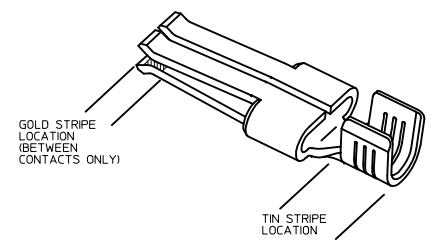
**Need more information on product
environmental compliance?**

Email productcompliance@molex.com
 For a multiple part number RoHS Certificate of Compliance, [click here](#)

Please visit the [Contact Us](#) section for any non-product compliance questions.

Search Parts in this Series
[44262Series](#)

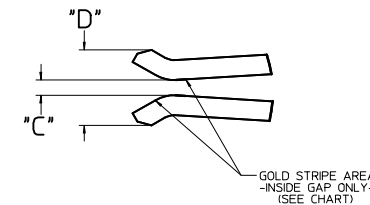
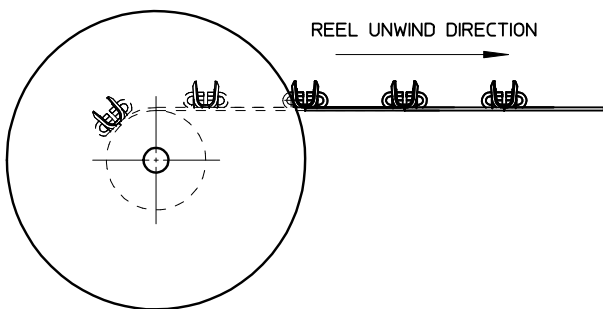
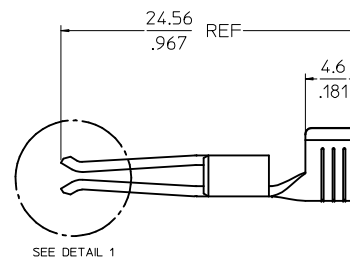
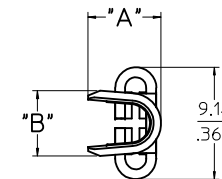
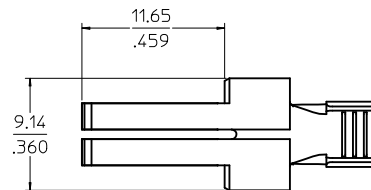
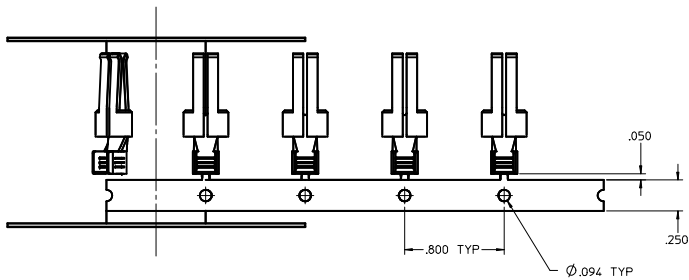
| PART NUMBER | PLATING | RECOMMENDED WIRE SIZE | DIM 'A' HEIGHT | DIM 'B' WIDTH | DIM 'C' GAP | DIM 'D' TIPS | RECOMMENDED CRIMP APPLICATOR | MATING CONTACT | PACKAGE SIZE |
|-------------|---|-------------------------|-----------------------|-----------------------|-------------|------------------|------------------------------|---|---------------------|
| 44262-4304 | 80-160µ * TIN OVER 50µ * NICKEL OVERALL | 8 AWG (2) 12 AWG | 7.42±0.5 .292±.020 | 5.84±0.5 .230±.020 | | | | | 1800 PARTS/ REEL |
| 44262-4334 | 30µ * GOLD STRIPE OVER 50µ * NICKEL OVERALL WITH 80-130µ * SELECT TIN | | | | | | 63832-6300 | | |
| 44262-4302 | 80-160µ * TIN OVER 50µ * NICKEL OVERALL | 10-12 AWG (2) 14 AWG | 5.97±0.5 .235±.020 | 5.33±0.5 .210±.020 | 0.10/.004 | 2.54/.100 REF | | 44262-6*** SEE MOLEX DRAWING SD-44262-026 OR WITH BLADES 0.64/.025 THICK X 6.10/.240 MM WIDE | 2500 PARTS/ REEL |
| 44262-4332 | 30µ * GOLD STRIPE OVER 50µ * NICKEL OVERALL WITH 80-130µ * SELECT TIN | | | | | | 63832-6000 | | |
| 44262-4306 | 80-160µ * TIN OVER 50µ * NICKEL OVERALL | 14-16 AWG (2) 16 AWG | 5.20±0.5 .205±.020 | 5.33±0.5 .210±.020 | | | | | |
| 44262-4336 | 30µ * GOLD STRIPE OVER 50µ * NICKEL OVERALL WITH 80-130µ * SELECT TIN | (2) 18 AWG | | | | | 63832-6100 | | |
| 44262-4404 | 80-160µ * TIN OVER 50µ * NICKEL OVERALL | 8 AWG (2) 12 AWG | 7.42±0.5 .292±.020 | 5.84±0.5 .230±.020 | | | | | 1800 PARTS/ REEL |
| 44262-4434 | 30µ * GOLD STRIPE OVER 50µ * NICKEL OVERALL WITH 80-130µ * SELECT TIN | | | | | | 63832-6300 | | |
| 44262-4402 | 80-160µ * TIN OVER 50µ * NICKEL OVERALL | 10-12 AWG (2) 14 AWG | 5.97±0.5 .235±.020 | 5.33±0.5 .210±.020 | 0.64/.025 | 3.07/.121 REF | | FOR USE WITH BLADES 1.27/.050 THICK X 6.10/.240 MM WIDE | 2500 PARTS/ REEL |
| 44262-4432 | 30µ * GOLD STRIPE OVER 50µ * NICKEL OVERALL WITH 80-130µ * SELECT TIN | | | | | | 63832-6000 | | |
| 44262-4406 | 80-160µ * TIN OVER 50µ * NICKEL OVERALL | 14-16 AWG (2) 16 AWG | 5.20±0.5 .205±.020 | 5.33±0.5 .210±.020 | | | | | |
| 44262-4436 | 30µ * GOLD STRIPE OVER 50µ * NICKEL OVERALL WITH 80-130µ * SELECT TIN | (2) 18 AWG | | | | | 63832-6100 | | |
| 44262-4504 | 80-160µ * TIN OVER 50µ * NICKEL OVERALL | 8 AWG (2) 12 AWG | 7.42±0.5 .292±.020 | 5.84±0.5 .230±.020 | | | | | 1800 PARTS/ REEL |
| 44262-4534 | 30µ * GOLD STRIPE OVER 50µ * NICKEL OVERALL WITH 80-130µ * SELECT TIN | | | | | | 63832-6300 | | |
| 44262-4502 | 80-160µ * TIN OVER 50µ * NICKEL OVERALL | 10-12 AWG (2) 14 AWG | 5.97±0.5 .235±.020 | 5.33±0.5 .210±.020 | 0.30/.012 | 2.74/.108 REF | | FOR USE WITH BLADES 0.81/.032 THICK X 6.10/.240 MM WIDE RECOMMENDED FOR 6 CIRCUITS AND ABOVE | 2500 PARTS/ REEL |
| 44262-4532 | 30µ * GOLD STRIPE OVER 50µ * NICKEL OVERALL WITH 80-130µ * SELECT TIN | | | | | | 63832-6000 | | |
| 44262-4506 | 80-160µ * TIN OVER 50µ * NICKEL OVERALL | 14-16 AWG (2) 16 AWG | 5.20±0.5 .205±.020 | 5.33±0.5 .210±.020 | | | | | |
| 44262-4536 | 30µ * GOLD STRIPE OVER 50µ * NICKEL OVERALL WITH 80-130µ * SELECT TIN | (2) 18 AWG | | | | | 63832-6100 | | |
| 44262-4604 | 80-160µ * TIN OVER 50µ * NICKEL OVERALL | 8 AWG (2) 12 AWG | 7.42±0.5 .292±.020 | 5.84±0.5 .230±.020 | | | | | 1800 PARTS/ REEL |
| 44262-4634 | 30µ * GOLD STRIPE OVER 50µ * NICKEL OVERALL WITH 80-130µ * SELECT TIN | | | | | | 63832-6300 | | |
| 44262-4602 | 80-160µ * TIN OVER 50µ * NICKEL OVERALL | 10-12 AWG (2) 14 AWG | 5.97±0.5 .235±.020 | 5.33±0.5 .210±.020 | 0.89/.035 | 3.33/.131 REF | | FOR USE WITH BLADES 1.27/.050 THICK X 6.10/.240 MM WIDE RECOMMENDED FOR 6 CIRCUITS AND ABOVE | 2500 PARTS/ REEL |
| 44262-4632 | 30µ * GOLD STRIPE OVER 50µ * NICKEL OVERALL WITH 80-130µ * SELECT TIN | | | | | | 63832-6000 | | |
| 44262-4606 | 80-160µ * TIN OVER 50µ * NICKEL OVERALL | 14-16 AWG (2) 16 AWG | 5.20±0.5 .205±.020 | 5.33±0.5 .210±.020 | | | | | |
| 44262-4636 | 30µ * GOLD STRIPE OVER 50µ * NICKEL OVERALL WITH 80-130µ * SELECT TIN | (2) 18 AWG | | | | | 63832-6100 | | |



- NOTES:
1. MATERIAL: COPPER ALLOY .032 IN THICK
 2. FINISH: PER MOLEX PLATING SPECIFICATION ES-88 - SEE CHART
 3. FOR CRIMP APPLICATOR SEE CHART
 4. FOR CRIMP TOOLING CONTACT MOLEX OR VISIT THE MOLEX WEBSITE AT: WWW.MOLEX.COM
 5. STANDARD PACKAGE SIZE: SEE CHART
 6. SEE PRODUCT SPECIFICATION: PS-44262-001 FOR MORE INFORMATION
 7. PARTS ARE RoHS COMPLIANT
 8. FOR MATING CONTACT: SEE CHART
 9. FOR CRIMP SET UP INFORMATION SEE MOLEX APPLICATION SPECIFICATION DOCUMENT:
8 AWG - ATS-638326300
10/12 AWG - ATS-638326000
14/16 AWG - ATS-638326100

| | | | | | | |
|--|-----------------|--|---|--------------|-------------------------------------|------------------------|
| REV DESCRIPTIONS IN CHART REC NO: UCP2009-1020 DRAWN: DOWNSHOTA CHKD: 2008/11/04 APPR: APATEL 2008/11/04 | QUALITY SYMBOLS | GENERAL TOLERANCES (UNLESS SPECIFIED) | DIMENSION STYLE | SCALE | DESIGN UNITS | THIRD ANGLE PROJECTION |
| | ▽=0 | 4 PLACES ±.005 | MM/IN | 1:1 | INCH | ☉ |
| | ▽=0 | 3 PLACES ±.010 | | | | |
| | ▽=0 | 2 PLACES ±.025 | | | | |
| | | ANGULAR ±1/2° | | | | |
| | | DRAFT WHERE APPLICABLE MUST REMAIN WITHIN DIMENSIONS | | | | |
| | | | DRAWN BY | DATE | TITLE | |
| | | | BKOSTIC | 2006/11/13 | TERMINAL - RECEPTACLE POWER CONTACT | |
| | | | CHECKED BY | DATE | | |
| | | | BKOSTIC | 2006/11/13 | | |
| | | | APPROVED BY | DATE | | |
| | | | APATEL | 2006/11/14 | | |
| | | | MATERIAL NO. | DOCUMENT NO. | | |
| | | | SEE CHART | SD-44262-100 | | |
| | | | THIS DRAWING CONTAINS INFORMATION THAT IS PROPRIETARY TO MOLEX INCORPORATED AND SHOULD NOT BE USED WITHOUT WRITTEN PERMISSION | | | |
| | | | SIZE | SHEET NO. | | |
| | | | D | 1 OF 2 | | |

20 19 18 17 16 15 14 13 12 11 10 9 8 7 6 5 4 3 2 1



DETAIL 1
SCALE 10:1

| SEE SHEET 1 IEC NO: UCP2009-1020 DRAWN DATA 2008/11/04 CHYKD: 2008/11/04 APPR: APATEL 2008/11/04 REV DESCRIPTION | QUALITY SYMBOLS ▽=0 ▽=0 ▽=0 | | GENERAL TOLERANCES (UNLESS SPECIFIED) <table border="1"> <thead> <tr> <th></th> <th>mm</th> <th>INCH</th> </tr> </thead> <tbody> <tr> <td>4 PLACES</td> <td>± .010</td> <td>± .0004</td> </tr> <tr> <td>3 PLACES</td> <td>± .025</td> <td>± .0010</td> </tr> <tr> <td>2 PLACES</td> <td>± .050</td> <td>± .0020</td> </tr> <tr> <td>1 PLACE</td> <td>± .125</td> <td>± .0050</td> </tr> <tr> <td colspan="3">ANGULAR ±1/2°</td> </tr> </tbody> </table> | | | mm | INCH | 4 PLACES | ± .010 | ± .0004 | 3 PLACES | ± .025 | ± .0010 | 2 PLACES | ± .050 | ± .0020 | 1 PLACE | ± .125 | ± .0050 | ANGULAR ±1/2° | | | DIMENSION STYLE MM/IN DRAWN BY BKOSTIC DATE 2006/11/13 CHECKED BY BKOSTIC DATE 2006/11/13 APPROVED BY APATEL DATE 2006/11/14 | | SCALE 5:1 DESIGN UNITS INCH THIRD ANGLE PROJECTION | |
|--|--------------------------------------|---------|--|--|---|----|------|----------|--------|---------|----------|--------|---------|----------|--------|---------|---------|--------|---------|---------------|--|--|--|--|--|--|
| | | mm | INCH | | | | | | | | | | | | | | | | | | | | | | | |
| | 4 PLACES | ± .010 | ± .0004 | | | | | | | | | | | | | | | | | | | | | | | |
| | 3 PLACES | ± .025 | ± .0010 | | | | | | | | | | | | | | | | | | | | | | | |
| 2 PLACES | ± .050 | ± .0020 | | | | | | | | | | | | | | | | | | | | | | | | |
| 1 PLACE | ± .125 | ± .0050 | | | | | | | | | | | | | | | | | | | | | | | | |
| ANGULAR ±1/2° | | | | | | | | | | | | | | | | | | | | | | | | | | |
| DRAFT WHERE APPLICABLE MUST REMAIN WITHIN DIMENSIONS | | | MATERIAL NO. SEE CHART SIZE D | | TITLE TERMINAL - RECEPTACLE POWER CONTACT | | | | | | | | | | | | | | | | | | | | | |
| | | | MOLEX INCORPORATED | | SHEET NO. 2 OF 2 | | | | | | | | | | | | | | | | | | | | | |
| | | | DOCUMENT NO. SD-44262-100 | | THIS DRAWING CONTAINS INFORMATION THAT IS PROPRIETARY TO MOLEX INCORPORATED AND SHOULD NOT BE USED WITHOUT WRITTEN PERMISSION | | | | | | | | | | | | | | | | | | | | | |

19 18 17 16 15 14 13 12 11 10 9 8 7 6 5 4 3 2 1