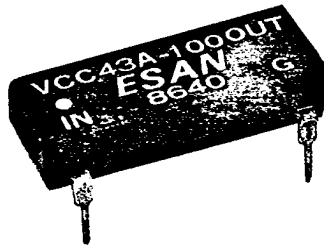


- Single Output
- 14 Pin DIL Package
- Auto-Insertable



Specifications:

- Delay tolerance : $\pm 5\%$ or 2ns whichever is greater
- Rise time : 4ns max.
- Temp. coefficient : 100 ppm/ $^{\circ}\text{C}$
- Operating Temp. Range : -0°C to 70°C
- Minimum Pulse Width : 40% of total delay
- Supply Voltage : $5\text{V}_{\text{DC}} \pm 5\%$
- Logic 1 Input current : 50 μA max.
- Logic 0 Input current : -2 mA max.
- Logic 1 Output : 2.75V min.
- Logic 0 Output : 0.4V max.
- Logic 1 Fan out : 20/TAP max.
- Logic 0 Fan out : 10/TAP max.
- Power Dissipation : 375 mW max.

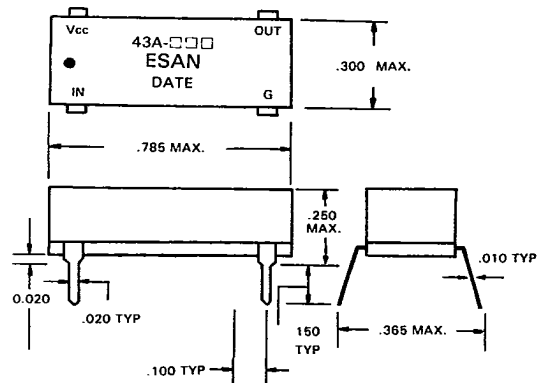
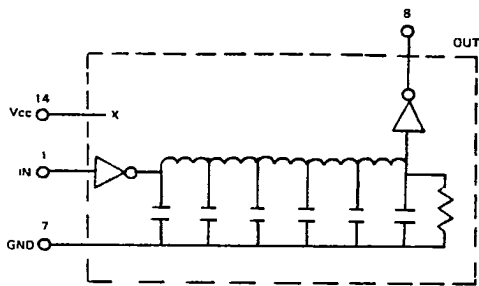
Test Conditions:

- Input pulse voltage : 3.2V
- Input pulse width : $1.2 \times$ total delay
- Input pulse spacing : $2 \times$ total delay
- Input pulse rise time : 2 ns
- Rise time : 0.75V to 2.4V
- Time delay measured @ 1.5V level
- All measurement : @ $V_{\text{CC}} = 5.0\text{V}$, $T_{\text{A}} = 25^{\circ}\text{C}$

Features:

- Schottky TTL interface
- Low power schottky available named "43AL- xxx" series
- Both Leading and Trailing edge available under request named "43B-xxx" series

PART NO.	DELAY DELAY (ns)
43A-025	25
43A-050	50
43A-075	75
43A-100	100
43A-125	125
43A-150	150
43A-200	200
43A-250	250
43A-300	300
43A-400	400
43A-500	500



Unit: Inch