

100 Watt HY Series**FEATURES**

- Low Profile – 1.2" High
- Wide Range Input
- Meets International Safety and EMI Specifications
 - UL 1950 Recognized
 - CSA 22.2 No. 234 Certified
 - EN 60950(TUV Certified)
 - Independently Tested to FCC Part 15 Class B, VDE 0871 Class B and VCCI Class 2.
 - CE
- MTBF > 300,000 Hours
- 5, 12 or 24 Volt Models
- Totally Enclosed
- LED Indicator
- Hyper-Resonant Converter
- Remote Sense, Remote On/Off

SPECIFICATIONS**INPUT**

Voltage	85 - 132 / 170 - 264VAC (auto selection)
Frequency	47 - 63 Hz
Current	
Full Load	100 VAC - 2.4A (RMS) 200 VAC - 1.4A (RMS)
Inrush	100 VAC - 15A 200 VAC - 30A

OUTPUT

Regulation	
Total	±3%
Line (static)	±0.1%
Line (dynamic)	±0.4%
Load (static)	±0.5%
Load (dynamic)	±0.7% (for ±10% change of nominal output current)
Drift	±0.5% (for 8 hours after 10 min. warm-up)
Temp. Coefficient	±0.02%
Ripple & Noise (peak-to-peak)	1% +70 mV max. (measured at 25°C with a bandwidth of 50 MHz)
Hold-up Time	16 mS min. (measured at 100 VAC, full load, 25°C)
Rise Time	300 mS max. (measured at 100 VAC, full load, 25°C)
Converter Topology	Resonant Converter
Operating Frequency	450 KHz

PROTECTION

Overvoltage	All models are protected against overvoltage. Control circuit is preset so output voltage does not exceed the following values:								
	<table> <tr> <td>Output V</td> <td>5</td> <td>12</td> <td>24</td> </tr> <tr> <td>Max. OVP</td> <td>6.9</td> <td>15.5</td> <td>31.0</td> </tr> </table>	Output V	5	12	24	Max. OVP	6.9	15.5	31.0
Output V	5	12	24						
Max. OVP	6.9	15.5	31.0						
Overload	All models are protected against overload. The control circuit has a foldback characteristic with the knee set at 110% of full-rated load. Recovery is automatic after removal of the fault.								

Input Noise Tolerance

Line-Neutral	1000V 800 nS
Line-Line	1000V 800 ns
	(connected equipment will continue to function and protection equipment will not activate falsely)

Lightning

Surge Tolerance	1200V peak, 1 msec rise time from 10% to 90% load. 40 msec decay from 90% to 10% load. (power supply will not be damaged, nor will its protection circuits activate falsely)
-----------------	--

ESD Tolerance

FG Terminal-Cover	10 KV (ESD probe fitted with 500 pf and 100 ohms in parallel with probe output) (power supply will not be damaged, nor will its protection circuits activate falsely)
-------------------	---

Remote Sense

Control Circuit automatically compensates for up to 0.5V lead drop.

INSULATION

All models meet the requirements of UL1950, CSA 22.2 No. 234, and EN60950 for Input-to-Chassis, Input-to-Output, Output-to-Chassis and Leakage Current specifications. See Engineering Section.

ENVIRONMENT

Operating Temp.	-10 to +40°C at full load.
Storage Temp.	-25 to +85°C
Operating Humidity	10 - 90%, (non-condensing)
Storage Humidity	10 - 95%, (non-condensing)
Shock	10G
Vibration	2G, 10 - 55 Hz, 0.75 mm amplitude (non-operating)

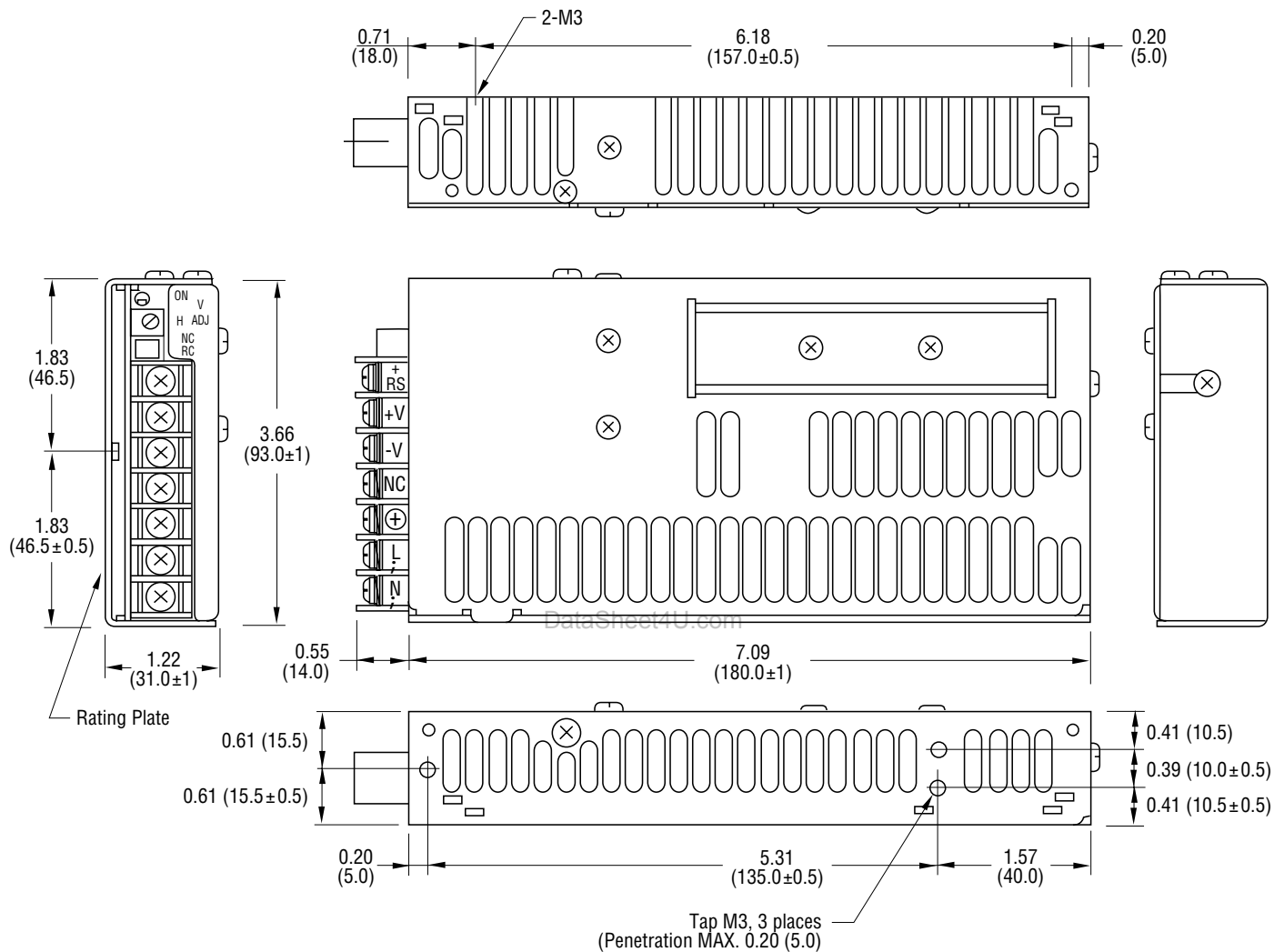
MODEL SPECIFICATIONS

Model Number	Output Voltage	Output Current	Efficiency
HY05020GN	5.0 ± 10%	0-20A	81%
HY128R4GN	12.0 ± 10%	0-8.4A	83%
HY244R2GN	24.0 ± 10%	0-4.2A	85%

MECHANICAL SPECIFICATIONS

Size (W x D x H) 7.1 x 3.6 x 1.2 inches (180 x 93 x 31 mm)

Weight 1.5 lb (0.7 kg)



Dimensions in inches; () Dimensions in mm.

CONNECTOR DESIGNATIONS

CN1-1	AC Neutral
CN1-2	AC Line
CN1-3	Frame Ground
CN1-4	-RS
CN1-5	-V
CN2-6	+V
CN2-7	+RS