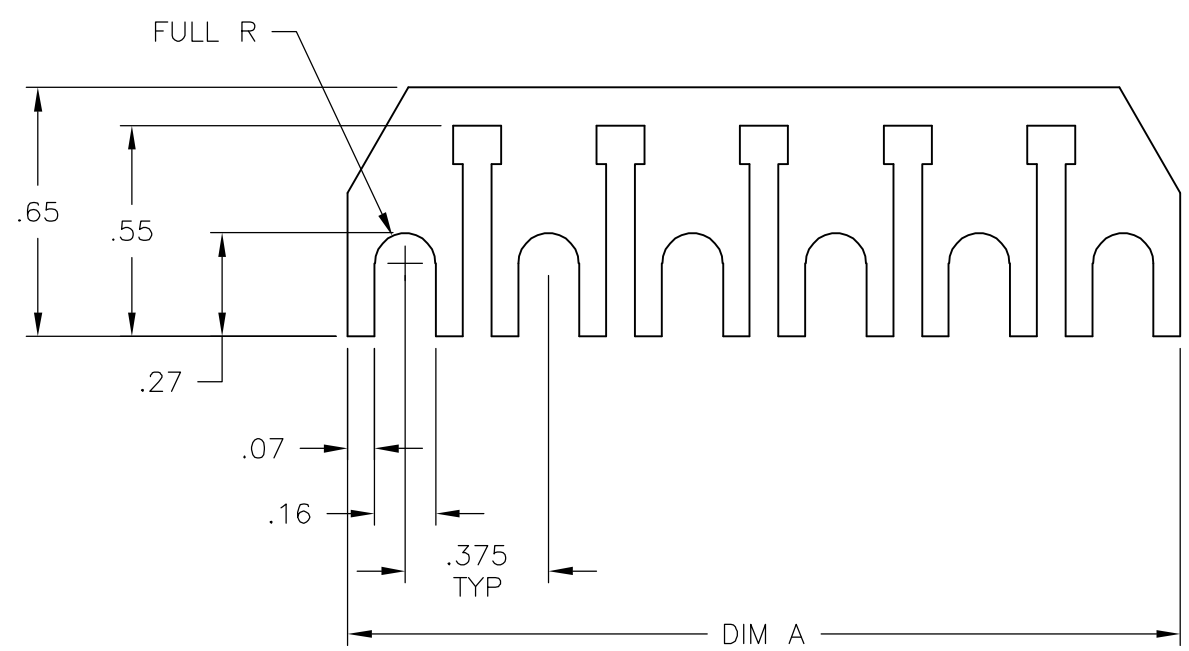


THIS DRAWING IS UNPUBLISHED. RELEASED FOR PUBLICATION  
 © COPYRIGHT BY TYCO ELECTRONICS CORPORATION. ALL RIGHTS RESERVED.

LOC	DIST	REVISIONS			
P	LTR	DESCRIPTION	DATE	DWN	APVD
FT	0	B	REVISED PER ECO-06-1106	1/17/06	SS SRY

NOTES:  
 ① .032 THK BRASS, PLATED .0002 MIN. 60/40 TIN.  
 ② .032 THK BRASS PLATED .0002 MIN BRIGHT TIN.



7.90	②	J6-20	2-1447477-0
6.30	②	J6-16	1-1447477-6
5.10	②	J6-13	1-1447477-3
4.30	②	J6-11	1-1447477-1
3.90	②	J6-10	1-1447477-0
3.10	②	J6-8	1447477-8
2.70	②	J6-7	1447477-7
2.30	②	J6-6	1447477-6
1.50	②	J6-4	1447477-4
1.10	②	J6-3	1447477-3
.70	②	J6-2	1447477-2
7.90	①	J6-20	4-1437644-8
6.30	①	J6-16	4-1437644-6
5.10	①	J6-13	4-1437644-5
4.30	①	J6-11	4-1437644-4
3.90	①	J6-10	4-1437644-3
3.10	①	J6-8	5-1437644-3
2.70	①	J6-7	5-1437644-2
2.30	①	J6-6	5-1437644-1
1.50	①	J6-4	5-1437644-0
1.10	①	J6-3	4-1437644-9
.70	①	J6-2	4-1437644-7
DIM A	MATERIAL	CATALOG NO.	PART NUMBER

THIS DRAWING IS A CONTROLLED DOCUMENT.		DWN S SCHLEGEL 8/4/04	Tyco Electronics Corporation Harrisburg, PA 17105-3608	
DIMENSIONS: INCHES		CHK S YODER 8/4/04		
TOLERANCES UNLESS OTHERWISE SPECIFIED:		APVD S YODER 8/4/04	NAME J6-XX JUMPER	
0 PLC ± - 1 PLC ± - 2 PLC ± .02 3 PLC ± .010 4 PLC ± - ANGLES ± 1'		PRODUCT SPEC -	-	
MATERIAL -		FINISH -	APPLICATION SPEC -	RESTRICTED TO -
		WEIGHT -	SIZE A3	CAGE CODE 00779
		CUSTOMER DRAWING	DRAWING NO G-4-1437644-3	SCALE NTS
			SHEET 1 of 1	REV B