

# Monolithic crystal filter

## MQF70.0-2000/02



### Application

- 4 pol filter
- i.f.- filter
- use in mobile and stationary transceivers

Limiting values		Unit	Value
Nominal frequency	$f_0$	MHz	70.0
Insertion loss		dB	< 3.0
Pass band at 3.0dB		kHz	$\pm > 10$
Ripple in pass band	$f_0 \pm 8 \text{ kHz}$	dB	< 2.0
Stop band attenuation	$f_0 \pm 40 \text{ kHz}$	dB	> 35
Alternate attenuation	$f_0 \pm 910 \text{ kHz}$	dB	> 70
Spurious responses		dB	> 30

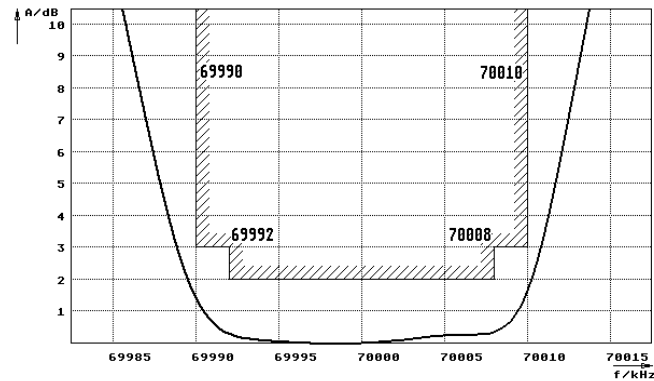
Terminating impedance Z			
R1  C1		Ohm/pF	2500    -1
R2  C2		Ohm/pF	2500    -1
Coupling capacitance	Ck	pF	-1.0

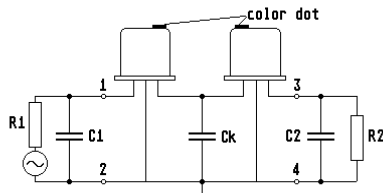
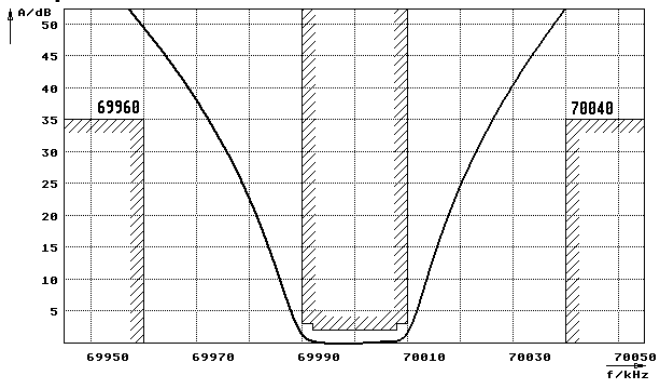
Operating temp. range		°C	-20... +70
-----------------------	--	----	------------

### Characteristics MQF70.0-2000/02

#### Pass band



#### Stop band



- Pin connections:
- 1 Input
  - 2 Ground-Input
  - 3 Output
  - 4 Ground-Output

