

PLEASE CHECK WWW.MOLEX.COM FOR LATEST PART INFORMATION

Part Number: [0026116114](#)
Status: **Active**
Overview: [kk](#)
Description: 3.96mm (.156") Pitch KK® PC Board Connector, Right Angle, Nylon Connector, 1.0µm (40µ") Tin (Sn), 11 Circuits

Documents:

[3D Model](#) [Product Specification PS-99020-0087 \(PDF\)](#)
[Drawing \(PDF\)](#) [RoHS Certificate of Compliance \(PDF\)](#)

General

Product Family PCB Receptacles
 Series [3215](#)
 Application Board-to-Board
 Overview [kk](#)
 Product Name KK®

Physical

Circuits (Loaded) 11
 Color - Resin Natural
 Glow-Wire Compliant No
 Lock to Mating Part Yes
 Material - Metal Phosphor Bronze
 Material - Plating Mating Tin
 Material - Plating Termination Tin
 Material - Resin Nylon
 Number of Rows 1
 Orientation Right Angle
 PC Tail Length (in) 0.145 In
 PC Tail Length (mm) 3.68 mm
 PCB Locator No
 PCB Retention Yes
 PCB Thickness Recommended (in) 0.062 In
 PCB Thickness Recommended (mm) 1.60 mm
 Packaging Type Bag, Tray
 Pitch - Mating Interface (in) 0.156 In
 Pitch - Mating Interface (mm) 3.96 mm
 Plating min: Mating (µin) 40.00
 Plating min: Mating (µm) 1.000
 Plating min: Termination (µin) 40.00
 Plating min: Termination (µm) 1.00
 Polarized to PCB Yes
 Temperature Range - Operating 0°C to +75°C
 Termination Interface: Style Through Hole

Electrical

Current - Maximum per Contact 5A
 Voltage - Maximum 250V

Solder Process Data

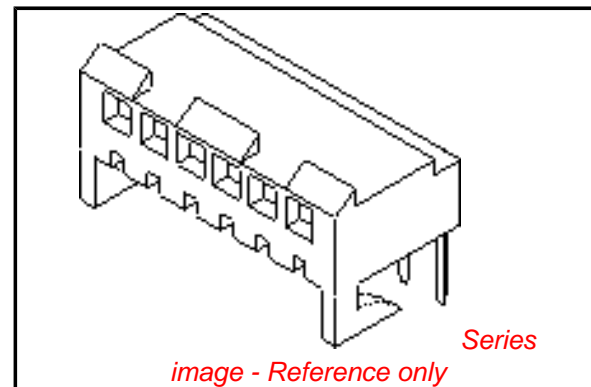
Lead-free Process Capability Wave Capable (TH only)

Material Info

Old Part Number 3215HR11AA

Reference - Drawing Numbers

Product Specification PS-99020-0087



EU RoHS

**ELV and RoHS
Compliant**
REACH SVHC
 Not Reviewed
**Halogen-Free
Status**

China RoHS



**Need more information on product
environmental compliance?**

Email productcompliance@molex.com
 For a multiple part number RoHS Certificate of Compliance, [click here](#)

Please visit the [Contact Us](#) section for any non-product compliance questions.

Search Parts in this Series

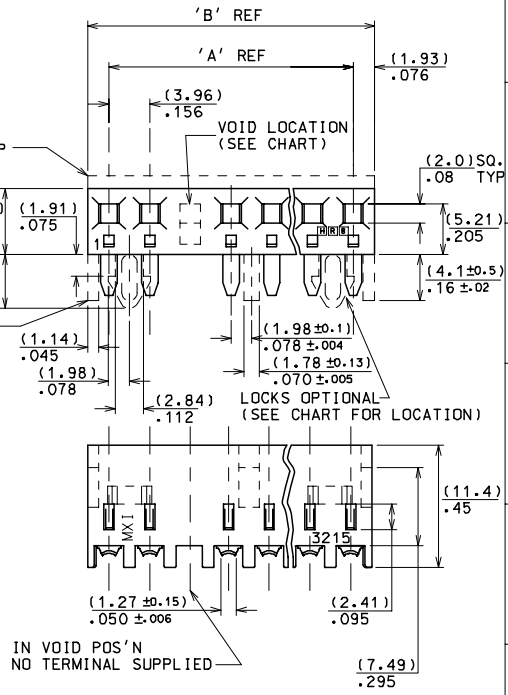
[3215Series](#)

This document was generated on 06/08/2010

PLEASE CHECK WWW.MOLEX.COM FOR LATEST PART INFORMATION

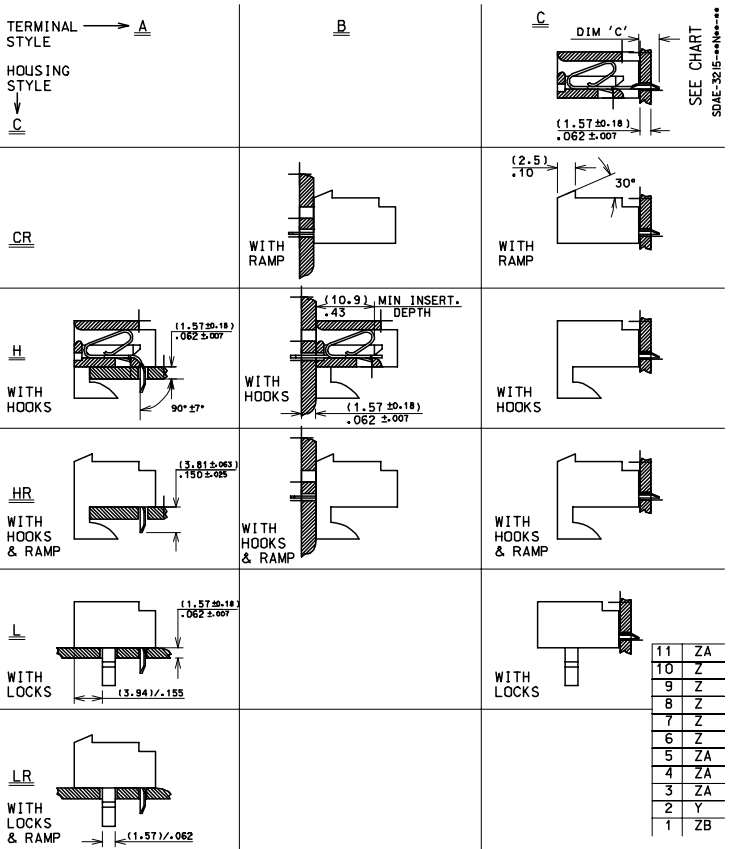
20	(75.29±0.41)	(79.15±0.51)
	2.964±.016	3.116±.020
19	(71.32±0.41)	(75.18±0.51)
	2.808±.016	2.960±.020
18	(67.36±0.36)	(71.22±0.46)
	2.652±.014	2.804±.018
17	(63.40±0.36)	(67.26±0.46)
	2.496±.014	2.648±.018
16	(59.44±0.36)	(63.29±0.46)
	2.340±.014	2.492±.018
15	(55.47±0.33)	(59.33±0.41)
	2.184±.012	2.336±.016
14	(51.51±0.33)	(55.37±0.41)
	2.028±.012	2.180±.016
13	(47.55±0.30)	(51.41±0.41)
	1.872±.012	2.024±.016
12	(43.59±0.25)	(47.45±0.36)
	1.716±.010	1.868±.014
11	(39.62±0.25)	(43.48±0.36)
	1.560±.010	1.712±.014
10	(35.66±0.25)	(39.52±0.31)
	1.404±.010	1.556±.012
9	(31.70±0.18)	(35.56±0.3)
	1.248±.007	1.400±.012
8	(27.74±0.18)	(31.60±0.31)
	1.092±.007	1.244±.012
7	(23.77±0.18)	(27.64±0.3)
	.936±.007	1.088±.012
6	(19.81±0.13)	(23.67±0.25)
	.780±.005	.932±.011
5	(15.85±0.13)	(19.71±0.25)
	.624±.005	.776±.010
4	(11.89±0.13)	(15.75±0.25)
	.468±.005	.620±.010
3	(7.92±0.13)	(11.79±0.25)
	.312±.005	.464±.010

No OF
CCTS



IN VOID POS'N
NO TERMINAL SUPPLIED

- NOTES:
1. THESE ASSEMBLIES STACKABLE END TO END ON (3.96)/.156 CENTRE TO CENTRE PROGRESSION.
 2. FOR CHARTS & PANEL DRILLING DETAILS SEE SHEET 2 AND SUBSEQUENT SHEETS.
 3. TERMINAL PULL OUT FORCE- 4lbs MIN.
 4. TERMINALS ARE LUBRICATED WITH MXI-3.
 5. CONNECTORS FOR USE WITH (1.14)/.045 SQ. OR RD. PINS
 6. THIS PART CONFORMS TO PROD.SPEC.99020-0087



REVISION #P-DATE
E2004-0792
P-SHEAHAN 04/03/98

4 : 1 x
G. HART 24/11/82
M GOONEY 26/11/98
MWILHITE 26/11/98
SE32151 .DGN SEE CHART SDAE-3215-***N*** I 0F 11

25
36
1/2

11 ZA
10 Z
9 Z
8 Z
7 Z
6 Z
5 ZA
4 ZA
3 ZA
2 Y
1 ZB

ZB

SHT. 1 OF 1		MRI-SDAE-3215-***N***			
MODIFICATION RECORD INDEX					
ECN	ISS.	DATE	INIT.	SHTS. AFFECTED	DESCRIPTION OF MOD.
MESL-077	F	2 .12.82	GH	ALL	REDRAW
MEML-112	G	26.4 .83	GH	ALL	REVISION
MEML-594	H	6 .6 .83	GH	ALL	VARIOUS
MEML-608	J	21.6 .83	GH	ALL	VARIOUS
MEML-681	K	31.8 .83	MAL	ALL	VARIOUS
MEML-901	L	25.6 .84	MC	ALL	VARIOUS
MEML-382	M	2 .10.84	MC	ALL	VARIOUS
MEML-509	N	29.5 .85	MC	ALL	VARIOUS
MEML-510	P	31.5 .85	MC	ALL	VARIOUS
MEML-1162	R	25.11.85	JP	ALL	VARIOUS
MEML-617	S	9 .1.86	MC	ALL	VARIOUS
MEML-625	T	20.1.86	MC	ALL	VARIOUS
E10010	U	11.1.91	POB	ALL	VARIOUS
E10018	V	18.1.91	POB	ALL	VARIOUS
E50203	W	08.12.94	JS	ALL	VARIOUS
E90137	Y	1.11.98	TM	ALL	REDRAWN ON CAD
E2001-0463	Z	1.11.00	MF	1,3,4,5,6,7,8,9,10,11	UPDATED BORDER
E2003-0992	ZA	03.05.29	PS	1	NEW PROD.SPEC.99020-0087 ADDED
MOLEX EUROPE			REVISE ONLY ON CAD SYSTEM		
THIS DRAWING CONTAINS INFORMATION THAT IS PROPRIETARY TO MOLEX INC. A SHOULD NOT BE USED WITHOUT WRITTEN PERMISSION			CROQUIS FILENAME		TITLE
NF0028			SE32151 . DGN		ZA

13		12		11		10		9		8		7		6		5		4		3		2		1						
PART No.	ENG No.	No. OF CCTS	LOCK RAMP	VOID CCT POS'N	CENTRE HOOK LOCATED BETWEEN CCT No's	PART No.	ENG No.	No. OF CCTS	LOCK RAMP	VOID CCT POS'N	CENTRE HOOK LOCATED BETWEEN CCT No's	PART No.	ENG No.	No. OF CCTS	LOCK RAMP	VOID CCT POS'N	CENTRE HOOK LOCATED BETWEEN CCT No's	PART No.	ENG No.	No. OF CCTS	LOCK RAMP	VOID CCT POS'N	CENTRE HOOK LOCATED BETWEEN CCT No's	PART No.	ENG No.	No. OF CCTS	LOCK RAMP	VOID CCT POS'N	CENTRE HOOK LOCATED BETWEEN CCT No's	
26-11-2036	AE-3215-H3AA	3	NO	NONE	-----	26-11-6034	AE-3215-HR3AA	3	YES	NONE	-----																			
↑ -2046	↑ -H4AA	4	↑	↑	-----	↑ -6044	↑ -HR4AA	4	↑	↑	-----	26-11-2045	AE-3215-L4AA	4	NO	NONE	1&2 3&4	26-13-3042	AE-3215-LR4AA	4	YES	NONE	1&2 3&4							
-2056	-H5AA	5			-----	-6054	-HR5AA	5			-----	↑ 2055	↑ -L5AA	5	↑	↑	1&2 4&5	↑ -3052	↑ -LR5AA	5	↑	↑	1&2 4&5							
-2066	-H6AA	6			-----	-6064	-HR6AA	6			-----	-2065	-L6AA	6			1&2 5&6	-3062	-LR6AA	6			1&2 5&6							
-2076	-H7AA	7			-----	-6074	-HR7AA	7			-----	-2075	-L7AA	7			1&2 6&7	-3072	-LR7AA	7			1&2 6&7							
-2086	-H8AA	8			4&5	-6084	-HR8AA	8			4&5	-2085	-L8AA	8			1&2 7&8	-3082	-LR8AA	8			1&2 7&8							
-2096	-H9AA	9			4&5	-6094	-HR9AA	9			4&5	-2095	-L9AA	9			1&2 5&6 8&9	-3092	-LR9AA	9			1&2 5&6 8&9							
-2106	-H10AA	10			5&6	-6104	-HR10AA	10			5&6	-2105	-L10AA	10			1&2 5&6 9&10	-3102	-LR10AA	10			1&2 5&6 9&10							
-2116	-H11AA	11			5&6	-6114	-HR11AA	11			5&6	-2115	-L11AA	11			1&2 6&7 10&11	-3112	-LR11AA	11			1&2 6&7 10&11							
-2126	-H12AA	12			4&5 8&9	-6124	-HR12AA	12			4&5 8&9	-2125	-L12AA	12			1&2 6&7 11&12	-3122	-LR12AA	12			1&2 6&7 11&12							
-2136	-H13AA	13			4&5 9&10	-6134	-HR13AA	13			4&5 9&10	-2135	-L13AA	13			1&2 6&7 12&13	-3132	-LR13AA	13			1&2 6&7 12&13							
-2146	-H14AA	14			5&6 9&10	-6144	-HR14AA	14			5&6 9&10	-2145	-L14AA	14			1&2 7&8 13&14	↓ -3142	-LR14AA	14			1&2 7&8 13&14							
-2156	-H15AA	15			5&6 10&11	-6154	-HR15AA	15			5&6 10&11	-2155	-L15AA	15			1&2 7&8 14&15	26-13-3152	-LR15AA	15			1&2 7&8 14&15							
-2166	-H16AA	16			6&7 11&12	-6164	-HR16AA	16			6&7 11&12	-2165	-L16AA	16			1&2 7&8 15&16	NOT TOOLED	-LR16AA	16			1&2 7&8 15&16							
-2176	-H17AA	17			6&7 11&12	-6174	-HR17AA	17			6&7 11&12	-2175	-L17AA	17			1&2 7&8 16&17	↑	-LR17AA	17			1&2 7&8 16&17							
-2186	-H18AA	18			6&7 10&11 15&16	-6184	-HR18AA	18			6&7 10&11 15&16	-2185	-L18AA	18			1&2 8&9 17&18	↓	-LR18AA	18			1&2 8&9 17&18							
↓ -2196	↓ -H19AA	19	↓	↓	5&6 10&11 15&16	↓ -6194	↓ -HR19AA	19	↓	↓	5&6 10&11 15&16	↓ -2195	↓ -L19AA	19	↓	↓	1&2 8&9 18&19	↓	-LR19AA	19	↓	↓	1&2 8&9 18&19							
26-11-2206	AE-3215-H20AA	20	NO	NONE	5&6 10&11 15&16	26-11-6204	AE-3215-HR20AA	20	YES	NONE	5&6 10&11 15&16	26-11-2205	AE-3215-L20AA	20	NO	NONE	1&2 9&10 19&20	NOT TOOLED	AE-3215-LR20AA	20	YES	NONE	1&2 9&10 19&20							
26-11-2069	AE-3215-H6AA-51	6	NO	3&4	-----	26-11-6057	AE-3215-HR5AA-51	5	YES	2&4	-----																			
26-11-2130	AE-3215-H13AA-7	13	NO	7	4&5 9&10	38-00-0321	AE-3215-HR13AA-51	13	YES	^{2 4 6} _{8 10 12}	4&5 9&10																			
						26-11-8065	AE-3215-HR6AA-51	6	YES	3&4	-----																			
						26-11-8137	AE-3215-HR13AA-7	13	YES	7	4&5 9&10																			

SHEET CHART
 PAGES 32
 SDAE-3215-***N***

HOUSING.
STYLE- H

TERMINAL.
STYLE- A

DRILLING DETAIL 'A'
(SEE SHT.2)

HOUSING.
STYLE- HR

TERMINAL.
STYLE- A

DRILLING DETAIL 'A'

HOUSING.
STYLE- L

TERMINAL.
STYLE- A

DRILLING DETAIL 'C'

HOUSING.
STYLE- LR

TERMINAL.
STYLE- A

DRILLING DETAIL 'C'

MATERIAL:

HOUSING- NYLON, 94V-2, COLOUR- NATURAL
 TERMINAL- PHOS. BR, PLATING- (P902)
 HOT/TIN DIP 1-2.5um (.000040"- .000100")

NOTES:

1. TERMINAL MUST MEET MOLEX SOLDERABILITY SPEC. No. 152.



LEAD FREE CONVERSION EC No. E2004-0792 DRWN: PSHEAHAN 04/03/11 CHK: / / / / APPR: / / / / REV: ZA	QUALITY SYMBOLS MAJOR CRITICAL	GENERAL TOLERANCES: (UNLESS SPECIFIED)	SCALE: <input checked="" type="checkbox"/> mm <input type="checkbox"/> INCH	DESIGN UNITS <input checked="" type="checkbox"/> mm <input type="checkbox"/> INCH	DIMENSIONS: <input checked="" type="checkbox"/> mm <input type="checkbox"/> INCH <input type="checkbox"/> mm <input type="checkbox"/> INCH	SHT: / REV: /
		4 PLACES ±0. ±.	DRAWN BY & DATE G. HART 24/11/82	THIRD ANGLE PROJECTION	TITLE: CONNECTOR, K-K (3.96)/.156 WITH OR WITHOUT LOCKING WITH P.C. TAIL TERMINALS	REVISION ON CAD ONLY
		3 PLACES ±0. ±.	CHECKED BY & DATE M. GOONEY 26/11/98	MOLEX	MOLEX INCORPORATED	SHEET NO. 3 OF
		2 PLACES ±0. ±.	APPROVED BY & DATE MWILHITE 26/11/98	CAD FILENAME SE32153.DGN	MATERIAL NO. SEE CHART DRAWING NO. SDAE-3215-***N***	SIZE C

ANGULAR: ± 1/2°

DRAFT WHERE APPLICABLE MUST REMAIN WITHIN DIMENSIONS

THIS DRAWING CONTAINS INFORMATION THAT IS PROPRIETARY TO MOLEX INCORPORATED AND SHOULD NOT BE USED WITHOUT WRITTEN PERMISSION.