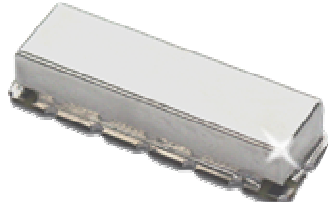


KR Electronics 2533 Bandpass Filter

General Description

KR 2533 is a 60 MHz surface mount bandpass filter. Other center frequencies and bandwidths available. Please consult the factory.

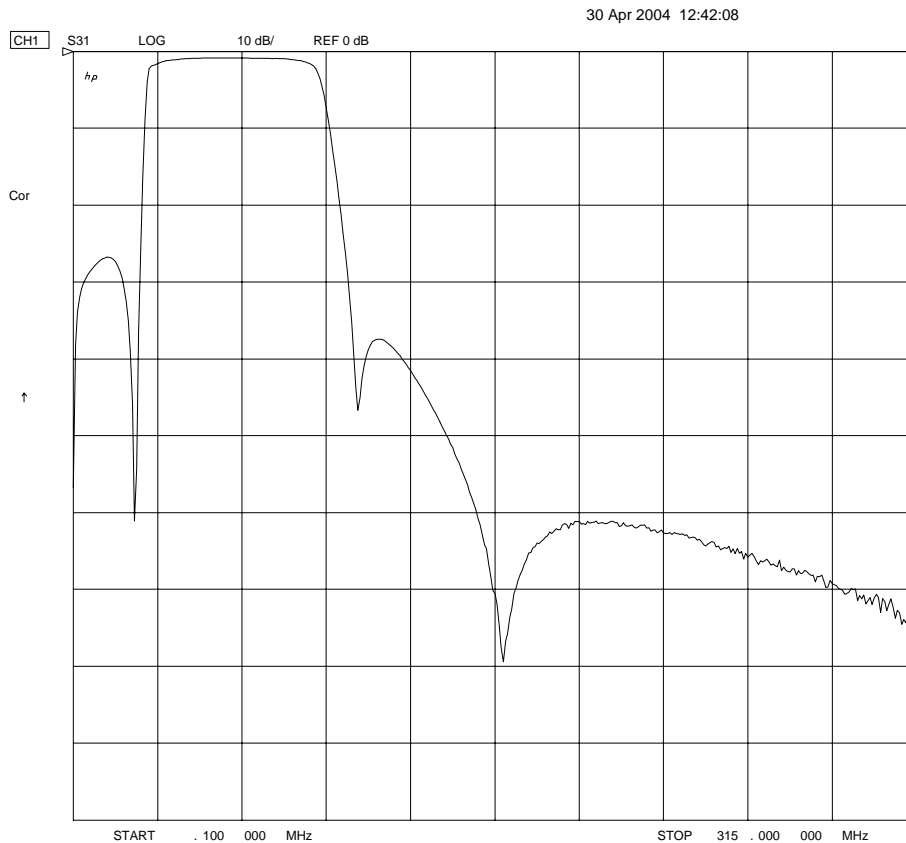


Features

- Surface Mount Package
- Custom Elliptic Type Design
- Group Delay Equalization
- 50 Ω Source and Load

Typical Performance

Overall Response (10 dB/div)



KR Electronics, Inc.
91 Avenel Street
Avenel, NJ 07001

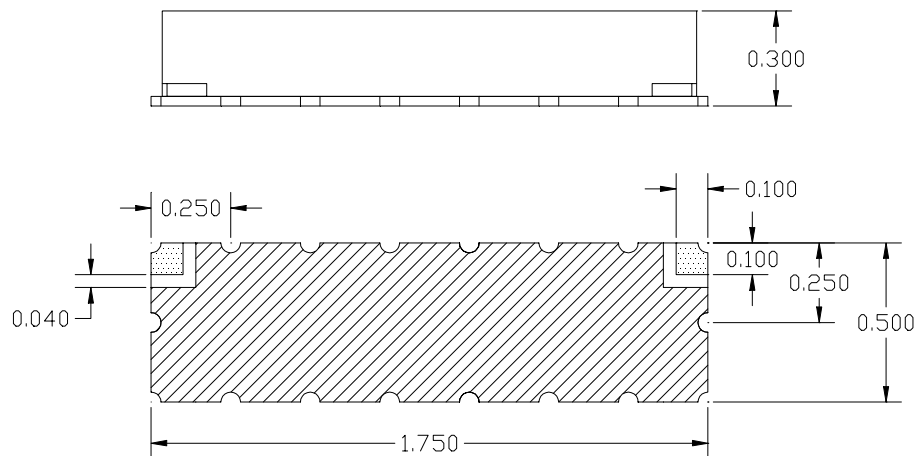
Web www.krfilters.com
Email sales@krfilters.com
Phone (732) 636-1900
Fax (732) 636-1982

KR 2533 Bandpass

Specifications

Parameter	Specification	
Filter type	Bandpass	
Center Frequency	60 MHz	
Insertion Loss	< 2 dB (< 1 dB typical)	
Specified Passband	45 MHz to 75 MHz	
Passband Phase Linearity	< 2° (< 1° typical)	Phase matching available
25 MHz & below	> 10 dB	
105 MHz	> 30 dB	
165 MHz	> 50 dB	
225 MHz	> 30 dB	
Source and Load	50 Ω	

Physical



Notes:

1. Surface mount package — Metal cover, open frame
2. Dimensions in inches
3. Use SN60 or SN63 solder during installation
4. If boards are cleaned after installation, units must be completely dried to remove any entrapped moisture that will effect electrical