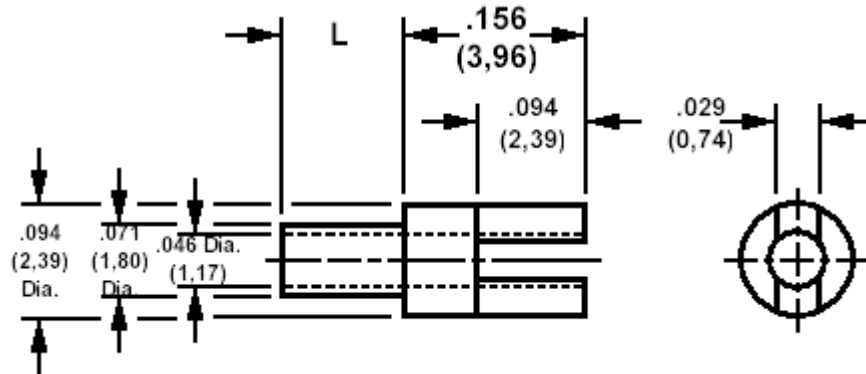


140-1941 Solder terminal, slotted

Recommended mounting hole .076 (1,93), #48 drill



How to order code

140-1941-XX-YY-00

Basic Part No XX = L dimension, YY = Plating Finish

DIMENSIONS (XX)			
Basic Part No	(XX)	L	Board Thickness
140-1941	-11	.025 (0,64)	.016 (0,40)
	-01	.045 (1,14)	.031 (0,79)
	-02	.094 (2,39)	.062 (1,59)
	-03	.125 (3,18)	.094 (2,38)
	-04	.156 (3,96)	.125 (3,18)

MATERIALS			
Component	Material	Finish (YY)	
Terminal	Brass	-01	-05
		Silver	Electro Solder

SWAGE TOOLING	
Recommended Swaging Tools:-	
Anvil	435-6412-01-00-00
Roll punch	435-6617-01-00-00
Flare Punch	435-6657-01-00-00