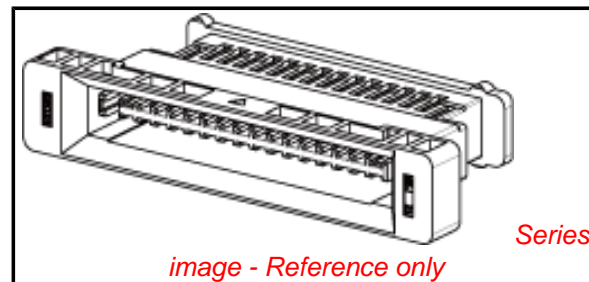


PLEASE CHECK WWW.MOLEX.COM FOR LATEST PART INFORMATION

Part Number: **5033692000**
Status: **Active**
Description: 2.50mm (.098") Pitch Floating Wire-to-Board Plug housing, Dual Row, 20 Circuits

Documents:

[3D Model](#) [Product Specification PS-503367-001 \(PDF\)](#)
[Drawing \(PDF\)](#) [RoHS Certificate of Compliance \(PDF\)](#)



General

Product Family Crimp Housings
 Series [503369](#)
 Comments Panel mount with plug adaptor
 Product Name N/A

Physical

Circuits (maximum) 20
 Color - Resin Black
 Gender Plug
 Glow-Wire Compliant No
 Keying to Mating Part Yes
 Number of Rows 2
 Packaging Type Bag
 Panel Mount Yes
 Pitch - Mating Interface (in) 0.098 In
 Pitch - Mating Interface (mm) 2.50 mm
 Polarized to Mating Part Yes
 Temperature Range - Operating -25°C to +85°C

Electrical

Current - Maximum per Contact 3A

Material Info

Reference - Drawing Numbers

Application Specification AS-503367-001
 Product Specification PS-503367-001
 Sales Drawing SD-503369-001

EU RoHS

**ELV and RoHS
Compliant**

REACH SVHC

Not Reviewed

Halogen-Free

Status

Not Reviewed

China RoHS



**Need more information on product
environmental compliance?**

Email productcompliance@molex.com
 For a multiple part number RoHS Certificate of
 Compliance, [click here](#)

Please visit the [Contact Us](#) section for any
 non-product compliance questions.

Search Parts in this Series

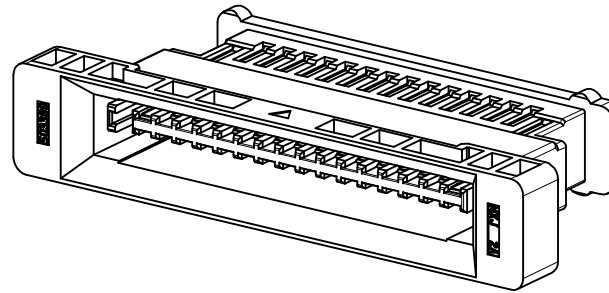
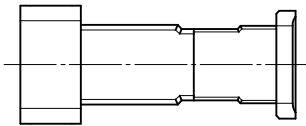
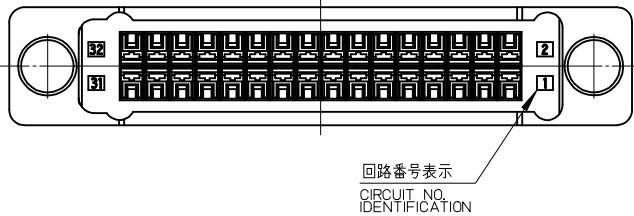
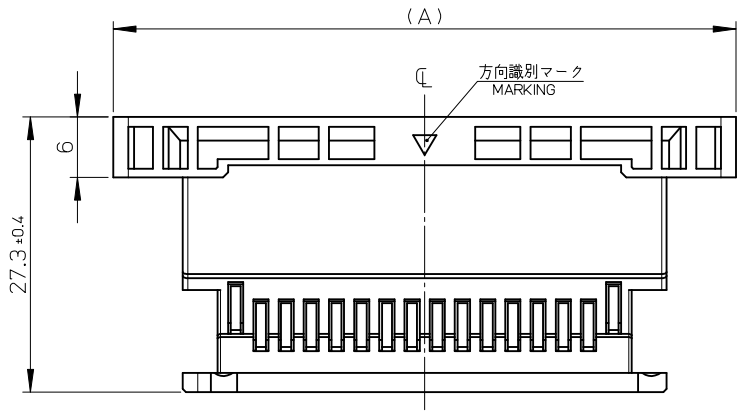
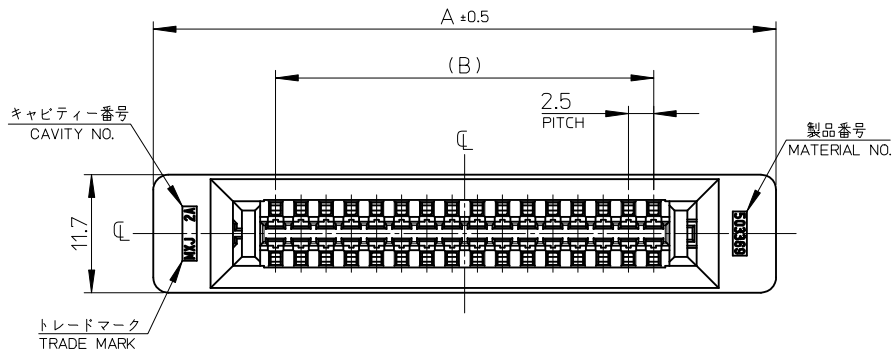
[503369Series](#)

Mates With

[503367](#) PCB Receptacle

Use With

[503371](#) Plug Terminal . [503370](#) Plug
 Adaptor



注記:
NOTES

1. 材質: ポリブチレンテレフタレート (PBT)、ガラス充填、UL94V-0、黒色
MATERIAL: POLYBUTYLENE TEREPHTHALATE (PBT), GLASS FILLED, UL94V-0, BLACK
2. 嵌合相手: 503367-**00
MATING CONNECTOR: 503367-**00
3. 適合圧着端子: 503371-****
APPLICABLE CRIMP TERMINAL: 503371-****
4. 回路番号 1, 2, N-1, N 極目はシーケンス回路 (N: 極数)
CIRCUITS NO. 1, 2, N-1 AND N ARE SEQUENCE CIRCUITS (N: CIRCUITS SIZE).
5. 製品仕様及び取り扱いについては、製品仕様書 PS-503367-001 及び、コネクタ取扱説明書 AS-503367-001 を参照願います。
PLEASE REFER TO PRODUCTS SPECIFICATION PS-503367-001 AND USER'S MANUAL AS-503367-001.
6. ELV 及び RoHS 適合品。
ELV AND RoHS COMPLIANT.

37.5	61.8	503369-3200	503369-**00	32
22.5	46.8	503369-2000		20
B	A	PLASTIC BAG オーダー番号 ORDER No.	MODEL NO.	極数 CIRCUITS

RELEASED EC NO.: J2009-2286 DRWN: KWASHIO 2009/04/15 CHKD: SSAT003 2009/04/15 APPR: SICHIKAWA 2009/04/15	GENERAL TOLERANCES (UNLESS SPECIFIED)		DIMENSION STYLE MM ONLY		SCALE 2:1	DESIGN UNITS METRIC	THIRD ANGLE PROJECTION
	10 UNDER	±0.2	DRAWN BY KKOBAYASHI	DATE 09/04/15	TITLE 2.5 FLOATING CONN. PLUG HS'G		
	10 OVER 30 UNDER	±0.25	CHECKED BY SSAT003	DATE 09/04/15	MOLEX INCORPORATED		
	30 OVER	±0.3	APPROVED BY SICHIKAWA	DATE 09/04/15	MATERIAL NO. SEE CHART	DOCUMENT NO. SD-503369-001	SHEET NO. 1 OF 1
0	DESCRIPTION ANGULAR ±3 ° DRAFT WHERE APPLICABLE MUST REMAIN WITHIN DIMENSIONS	THIS DRAWING CONTAINS INFORMATION THAT IS PROPRIETARY TO MOLEX INCORPORATED AND SHOULD NOT BE USED WITHOUT WRITTEN PERMISSION					