

PLEASE CHECK WWW.MOLEX.COM FOR LATEST PART INFORMATION

Part Number: [0917140022](#)
Status: **Active**
Description: 1.27mm (.050") Pitch Picoflex® PF-50 Header, Right Angle, High Temp, Tin (Sn) Plating, 22 Circuits, Glow Wire Compatible

Documents:

[3D Model](#) [Product Specification PS-99020-0011 \(PDF\)](#)
[Drawing \(PDF\)](#) [RoHS Certificate of Compliance \(PDF\)](#)

General

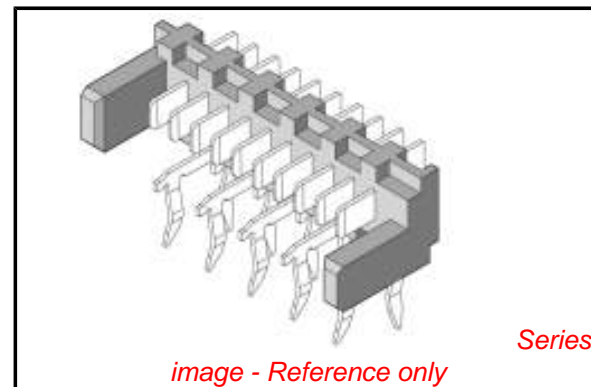
Product Family Ribbon Cable / Wire Trap Connectors
 Series [91714](#)
 Component Type PCB Header
 Glow-Wire Compliant Yes
 Product Name Picoflex®

Physical

Circuits (Loaded) 22
 Circuits (maximum) 22
 Color - Resin Natural
 Durability (mating cycles max) 30
 Entry Angle 90° Angle
 Lock to Mating Part Yes
 Material - Metal Brass
 Material - Plating Mating Tin
 Material - Plating Termination Tin
 Material - Resin High Temperature Thermoplastic
 Number of Rows 1
 PCB Locator No
 PCB Retention Yes
 PCB Thickness Recommended (in) 0.063 In
 PCB Thickness Recommended (mm) 1.60 mm
 Packaging Type Tube
 Pitch - Mating Interface (in) 0.050 In
 Pitch - Mating Interface (mm) 1.27 mm
 Pitch - Term. Interface (in) 0.050 In
 Pitch - Term. Interface (mm) 1.27 mm
 Plating min: Mating (µin) 120
 Plating min: Mating (µm) 3
 Plating min: Termination (µin) 120
 Plating min: Termination (µm) 3
 Polarized to Mating Part Yes
 Polarized to PCB No
 Shrouded Open Ends
 Stackable No
 Surface Mount Compatible (SMC) No
 Temperature Range - Operating -40°C to +105°C
 Termination Interface: Style Through Hole - Kinked Pin
 Wire Insulation Diameter N/A
 Wire Size AWG N/A
 Wire/Cable Type Ribbon Cable

Electrical

Current - Maximum per Contact 2.4A
 Voltage - Maximum 250V AC/DC



EU RoHS

ELV and RoHS Compliant
REACH SVHC Contains SVHC: No
Halogen-Free Status
Not Reviewed

China RoHS



Need more information on product environmental compliance?

Email productcompliance@molex.com
 For a multiple part number RoHS Certificate of Compliance, [click here](#)

Please visit the [Contact Us](#) section for any non-product compliance questions.

Search Parts in this Series

[91714Series](#)

Mates With

[90327 IDT Connector](#)

Material Info

Reference - Drawing Numbers

Product Specification

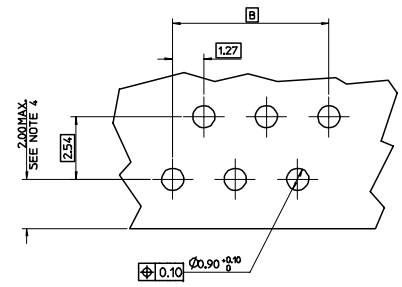
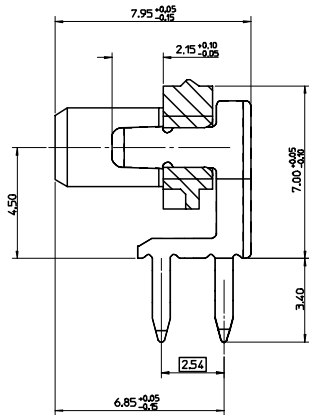
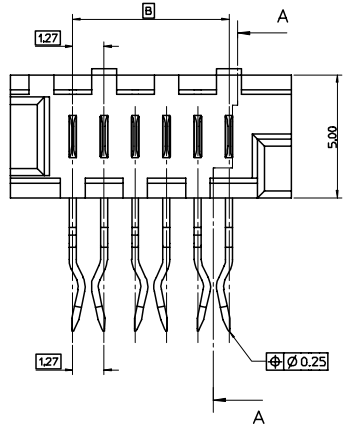
PS-99020-0011

Sales Drawing

SD-91714-001

This document was generated on 04/13/2010

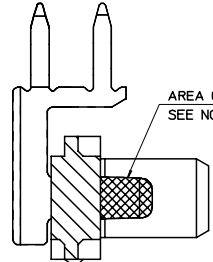
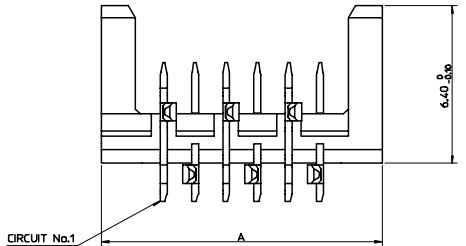
PLEASE CHECK WWW.MOLEX.COM FOR LATEST PART INFORMATION



RECOMMENDED P.C.B. LAYOUT VIEWED FROM COMPONENT SIDE
(P.C.B THICKNESS 1.60±0.20)

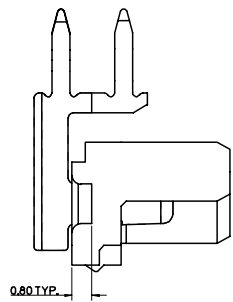
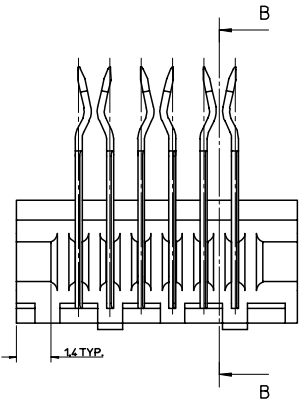
91714 - * 0 **

(CIRCUIT SIZE
(SEE CHART))
0- 3-5um TIN VERSION
3- 0.76um GOLD VERSION



SECTION B-B

| PART No. | No. OF CKTS | DIMN. A | DIMN. B | QTY PER TUBE |
|------------|-------------|---------|---------|--------------|
| 91714--026 | 26 | 36.80 | 31.75 | 14 |
| 91714--024 | 24 | 34.26 | 29.21 | 15 |
| 91714--022 | 22 | 31.72 | 26.67 | 16 |
| 91714--020 | 20 | 29.18 | 24.13 | 18 |
| 91714--018 | 18 | 26.64 | 21.59 | 20 |
| 91714--016 | 16 | 24.10 | 19.05 | 22 |
| 91714--014 | 14 | 21.56 | 16.51 | 24 |
| 91714--012 | 12 | 19.02 | 13.97 | 28 |
| 91714--010 | 10 | 16.48 | 11.43 | 32 |
| 91714--008 | 08 | 13.94 | 8.89 | 38 |
| 91714--006 | 06 | 11.40 | 6.35 | 46 |
| 91714--004 | 04 | 8.86 | 3.81 | 59 |
| | | | | |
| | | | | |



- NOTES:
 1. MATERIAL: HOUSING: NYLON 46, 30% GLASS FILLED TO UL 94 V-0, NATURAL. TERMINAL: CARTRIDGE BRASS 0.28 THICK REF.
 2. PLATING: TIN VERSION: 3-5um TIN ALLOVER 127um NICKEL UNDERCOAT. GOLD VERSION: 0.76um SELECTIVE GOLD AND 0.10-0.20um GOLD FLASH ALLOVER 127um NICKEL UNDERCOAT.
 3. MATES WITH MOLEX 90327 SERIES.
 4. DIMENSION APPLIES ONLY WHEN MATED TO A 90327 CONNECTOR WHOSE CABLE EXTENDS TOWARDS THE P.C.B.
 5. SEE PRODUCT SPECIFICATION PS-99020-0011.

| REVISION UPDATE EC No: E2007-0083 DRWN: DAWASZKIEWICZ/06/09/11 CHKD: JDENNEHY/2006/09/11 APPR: JDENNEHY/2006/09/11 | QUALITY SYMBOLS | GENERAL TOLERANCES (UNLESS SPECIFIED) | SCALE 10:1 | DESIGN UNITS METRIC | THIRD ANGLE PROJECTION | REVISE ON CAD ONLY | | | | | | | | | | | | | | | | | | | | | | | | | |
|--|--------------------------------------|--|---------------------------|---------------------|------------------------|--------------------|----------------|-------|-----------------|-------|----------------|-------|---------------|--|--|----|------|----------------|-------|----------------|-------|-----------------|-------|----------------|-------|---------------|--|---------|---|---|--|
| | ▼ 0 ∇ 0 | <table border="1"> <tr><th>mm</th><th>INCH</th></tr> <tr><td>4 PLACES ± ---</td><td>± ---</td></tr> <tr><td>3 PLACES ± ---</td><td>± ---</td></tr> <tr><td>2 PLACES ± 0.10</td><td>± ---</td></tr> <tr><td>1 PLACE ± 0.20</td><td>± ---</td></tr> <tr><td colspan="2">ANGULAR ± 2 °</td></tr> </table> | mm | INCH | 4 PLACES ± --- | ± --- | 3 PLACES ± --- | ± --- | 2 PLACES ± 0.10 | ± --- | 1 PLACE ± 0.20 | ± --- | ANGULAR ± 2 ° | | <table border="1"> <tr><th>mm</th><th>INCH</th></tr> <tr><td>4 PLACES ± ---</td><td>± ---</td></tr> <tr><td>3 PLACES ± ---</td><td>± ---</td></tr> <tr><td>2 PLACES ± 0.10</td><td>± ---</td></tr> <tr><td>1 PLACE ± 0.20</td><td>± ---</td></tr> <tr><td colspan="2">ANGULAR ± 2 °</td></tr> </table> | mm | INCH | 4 PLACES ± --- | ± --- | 3 PLACES ± --- | ± --- | 2 PLACES ± 0.10 | ± --- | 1 PLACE ± 0.20 | ± --- | ANGULAR ± 2 ° | | MM ONLY | DIMENSION STYLE DRAWN BY JDENNEHY DATE 2004/02/17 CHECKED BY JDENNEHY DATE 2004/02/18 | TITLE RIGHT ANGLE HIGH TEMP PICO FLEX HEADER ASSEMBLY STAGGERED 1.27 PITCH | |
| | mm | INCH | | | | | | | | | | | | | | | | | | | | | | | | | | | | | |
| 4 PLACES ± --- | ± --- | | | | | | | | | | | | | | | | | | | | | | | | | | | | | | |
| 3 PLACES ± --- | ± --- | | | | | | | | | | | | | | | | | | | | | | | | | | | | | | |
| 2 PLACES ± 0.10 | ± --- | | | | | | | | | | | | | | | | | | | | | | | | | | | | | | |
| 1 PLACE ± 0.20 | ± --- | | | | | | | | | | | | | | | | | | | | | | | | | | | | | | |
| ANGULAR ± 2 ° | | | | | | | | | | | | | | | | | | | | | | | | | | | | | | | |
| mm | INCH | | | | | | | | | | | | | | | | | | | | | | | | | | | | | | |
| 4 PLACES ± --- | ± --- | | | | | | | | | | | | | | | | | | | | | | | | | | | | | | |
| 3 PLACES ± --- | ± --- | | | | | | | | | | | | | | | | | | | | | | | | | | | | | | |
| 2 PLACES ± 0.10 | ± --- | | | | | | | | | | | | | | | | | | | | | | | | | | | | | | |
| 1 PLACE ± 0.20 | ± --- | | | | | | | | | | | | | | | | | | | | | | | | | | | | | | |
| ANGULAR ± 2 ° | | | | | | | | | | | | | | | | | | | | | | | | | | | | | | | |
| DRAFT WHERE APPLICABLE MUST REMAIN WITHIN DIMENSIONS | APPROVED BY BMAGUIRE DATE 2004/02/20 | MATERIAL NO. SEE CHART | DOCUMENT NO. SD-91714-001 | SHEET NO. 1 OF 1 | | | | | | | | | | | | | | | | | | | | | | | | | | | |