

**PLEASE CHECK WWW.MOLEX.COM FOR LATEST PART INFORMATION**

**Part Number:** [0850133225](#)  
**Status:** **Active**  
**Overview:** [din\\_41612](#)  
**Description:** 2.54mm (.100") Pitch DIN 41612 Header, Through Hole, Vertical, Style R Reverse, 1µm (40µ") Selective Gold (Au), 64 Circuits, Lead free

**Documents:**

|                               |   |
|-------------------------------|---|
| <a href="#">3D Model</a>      | <a href="#">Product Specification PS-85013-0001 (PDF)</a> |
| <a href="#">Drawing (PDF)</a> | <a href="#">RoHS Certificate of Compliance (PDF)</a>      |

**Agency Certification**

|     |         |
|-----|---------|
| CSA | LR19980 |
| UL  | E29179  |

**General**

|                |                           |
|----------------|---------------------------|
| Product Family | Backplane Connectors      |
| Series         | <a href="#">85013</a>     |
| Application    | Daughtercard              |
| Component Type | PCB Header                |
| Overview       | <a href="#">din_41612</a> |
| Product Name   | IEC 603-2/DIN 41612       |
| Style          | R                         |

**Physical**

|                                |                 |
|--------------------------------|-----------------|
| Circuits (Loaded)              | 64              |
| Circuits (maximum)             | 96              |
| Circuits Detail                | Rows A & C      |
| Durability (mating cycles max) | 500             |
| First Mate / Last Break        | No              |
| Flammability                   | 94V-0           |
| Guide to Mating Part           | No              |
| Keying to Mating Part          | Yes             |
| Number of Columns              | 32              |
| Number of Pairs                | Open Pin Field  |
| Number of Rows                 | 3               |
| Orientation                    | Vertical        |
| PC Tail Length (in)            | 0.180 In        |
| PC Tail Length (mm)            | 4.50 mm         |
| PCB Locator                    | No              |
| PCB Retention                  | Yes             |
| Packaging Type                 | Tray            |
| Pitch - Mating Interface (in)  | 0.100 In        |
| Pitch - Mating Interface (mm)  | 2.54 mm         |
| Pitch - Term. Interface (in)   | 0.100 In        |
| Pitch - Term. Interface (mm)   | 2.54 mm         |
| Plating min: Mating (µin)      | 39              |
| Plating min: Mating (µm)       | 1               |
| Polarized to PCB               | No              |
| Stackable                      | No              |
| Surface Mount Compatible (SMC) | No              |
| Temperature Range - Operating  | -55°C to +125°C |

**Electrical**

|                               |            |
|-------------------------------|------------|
| Current - Maximum per Contact | 2.5A       |
| Data Rate                     | 622.0 Mbps |
| Real Signals (per 25mm)       | 30         |

**EU RoHS**  
**ELV and RoHS**  
**Compliant**  
**REACH SVHC**  
 Not Reviewed  
**Halogen-Free**  
**Status**  
**Not Reviewed**

**China RoHS**



**Need more information on product environmental compliance?**

Email [productcompliance@molex.com](mailto:productcompliance@molex.com)  
 For a multiple part number RoHS Certificate of Compliance, [click here](#)

Please visit the [Contact Us](#) section for any non-product compliance questions.

**Search Parts in this Series**  
[85013Series](#)

**Mates With**  
[85042](#) , [85052](#) Backplane Header

|                   |             |
|-------------------|-------------|
| Shield Type       | N/A         |
| Shielded          | No          |
| Voltage - Maximum | 1000V (RMS) |

**Solder Process Data**

|  |                        |
|--|------------------------|
| Duration at Max. Process Temperature (seconds) | 10                     |
| Lead-free Process Capability                   | Wave Capable (TH only) |
| Process Temperature max. C                     | 260                    |

**Material Info****Reference - Drawing Numbers**

|                       |   |
|-----------------------|---|
| Product Specification | PS-85013-0001                                 |
| Sales Drawing         | SD-85013-3225, SDA-85013-0001, SDA-85013-3225 |

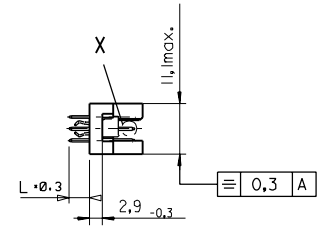
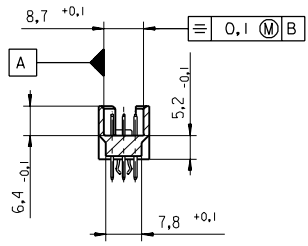
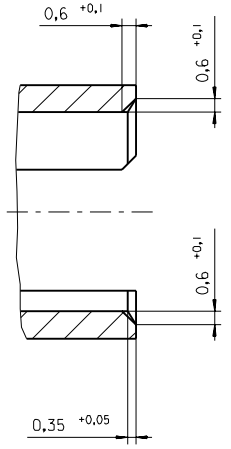
This document was generated on 05/17/2010

**PLEASE CHECK [WWW.MOLEX.COM](http://WWW.MOLEX.COM) FOR LATEST PART INFORMATION**

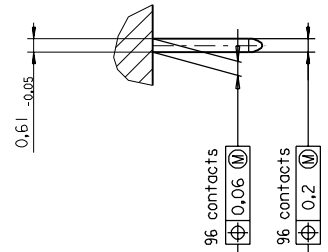


PART NO.  
DWG. NO.

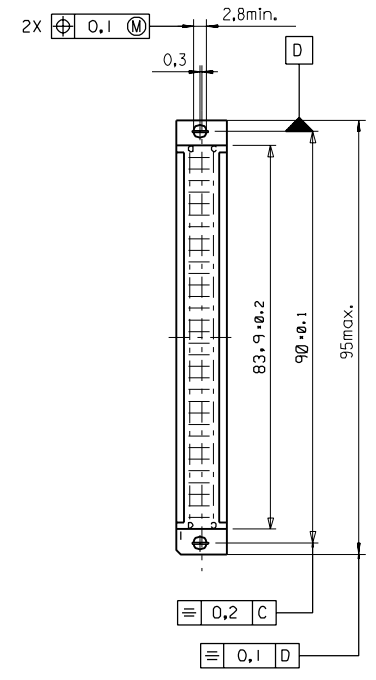
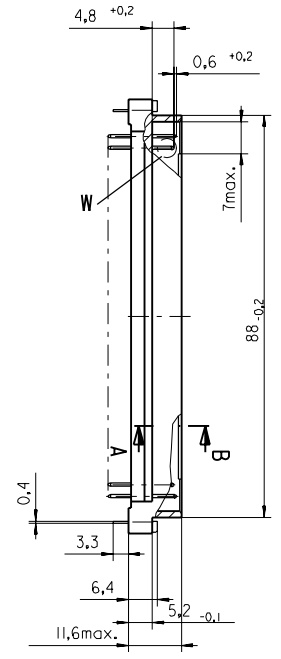
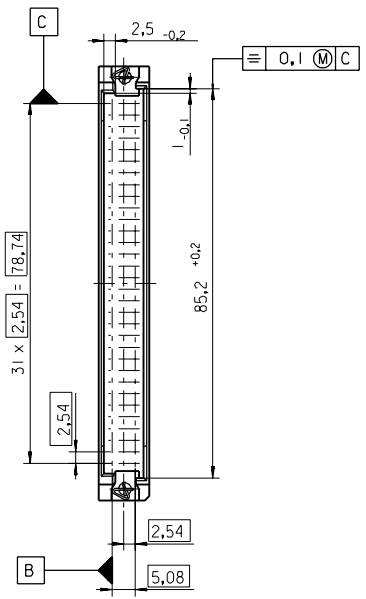
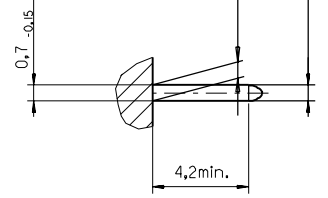
Section A - B  
5:1



View X  
5:1



View W  
5:1



|  |  |                           |      |   |      |
|--|--|---------------------------|------|---|------|
| FIRST ANGLE PROJECTION   |  | REVISE ONLY ON CAD SYSTEM |      | SH.   | REV. |
| UNLESS OTHERWISE SPECIFIED TOLERANCES: ANGULAR ±2°                                   |  | DRWG BY                   | SIGN | CAD/CAM PROJECT NAME  |      |
| INCH METRIC  |  | Ca                        |      | 85013000<br>611   |      |
| 3 PLACE ± . ±  |  | CHK'D BY                  | SIGN | THIS DRAWING CONTAINS INFORMATION THAT IS PROPRIETARY TO MOLEX INC. & SHOULD NOT BE USED WITHOUT WRITTEN PERMISSION |      |
| 2 PLACE ± . ±  |  | KN                        |      | TITLE   |      |
| 1 PLACE ± . ±  |  | APP'D BY                  | SIGN | 96 pos. Male connector<br>acc. DIN 41612 Style R<br>Dimensions  |      |
| DRAFT WHERE APPLICABLE MUST REMAIN WITHIN DIMENSIONS                                 |  | SCALE                     |      | SHEET NO. DATE  |      |
| DESIGN DIMENSION <input checked="" type="checkbox"/> MM <input type="checkbox"/> IN. |  | : 1                       |      | 1 OF 95/06/07   |      |
| EQUIVALENT DIMENSION <input type="checkbox"/> MM <input type="checkbox"/> IN.        |  | SCALE                     |      | MOLEX MOLEX EUROPE  |      |
| IF TWO DIMENSIONS ARE SHOWN THE UPPER IS THE DESIGN DIMENSION, LOWER IS SECONDARY    |  | SCALE                     |      | PART NO. DWG NO. SIZE   |      |
|  |  |                           |      | SDA-85013-0001 B  |      |

