

PLEASE CHECK WWW.MOLEX.COM FOR LATEST PART INFORMATION

Part Number: **0877057905**
Status: **Active**
Description: 1.00mm (.039") Pitch DDR-II DIMM 240 Circuits Socket, Vertical, 1.8 Voltage, 2.54mm (.100") Tail Length, White Latches, Nylon 4/6 Glass-filled, Black Housing, 0.76µm (30µ") Gold (Au), Beveled Metal Pins Width 2.55mm (.100"), Lead Free

Documents:

[3D Model](#) [Product Specification PS-87705-801 \(PDF\)](#)
[Drawing \(PDF\)](#) [RoHS Certificate of Compliance \(PDF\)](#)

Agency Certification

CSA LR19980
 UL E29179

General

Product Family Memory Module Sockets
 Series **87705**
 Comments White Latches Insertion Force: 10Kg (98N)
 Max. Beveled Metal Pin Width: 2.55mm (.100")
 Component Type Socket
 JEDEC Outline MO-237
 Product Name DDR2 DIMM

Physical

Circuits (Loaded) 240
 Durability (mating cycles max) 25
 Entry Angle Vertical (Top Entry)
 Flammability 94V-0
 Keying to Mating Part Yes
 Material - Plating Mating Gold
 Material - Plating Termination Tin
 PC Tail Length (in) 0.100 In
 PC Tail Length (mm) 2.54 mm
 PCB Retention Yes
 PCB Thickness Recommended (in) 0.062 In
 PCB Thickness Recommended (mm) 1.60 mm
 Packaging Type Tray
 Pitch - Mating Interface (in) 0.039 In
 Pitch - Mating Interface (mm) 1.00 mm
 Plating min: Mating (µin) 30
 Plating min: Mating (µm) 0.76
 Temperature Range - Operating -10°C to +85°C
 Termination Interface: Style Through Hole

Electrical

Current - Maximum per Contact 0.5A
 Voltage - Maximum 30V
 Voltage Key 1.8V, Center

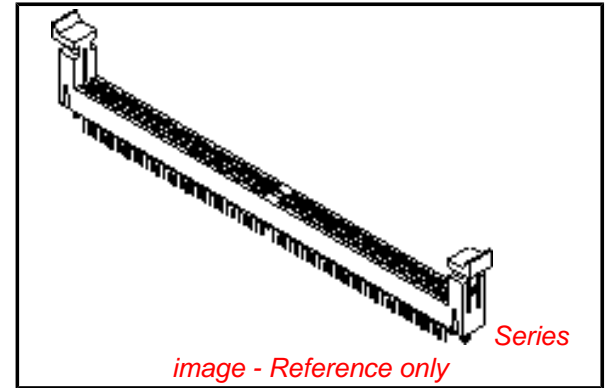
Solder Process Data

Lead-free Process Capability Wave Capable (TH only)
 Process Temperature max. C 260

Material Info

Reference - Drawing Numbers

Product Specification PS-87705-801



EU RoHS

ELV and RoHS Compliant
REACH SVHC
 Not Reviewed
Halogen-Free Status

China RoHS



Not Reviewed

Need more information on product environmental compliance?

Email productcompliance@molex.com
 For a multiple part number RoHS Certificate of Compliance, [click here](#)

Please visit the [Contact Us](#) section for any non-product compliance questions.

Search Parts in this Series

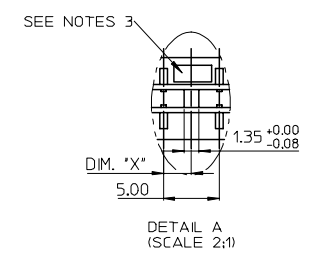
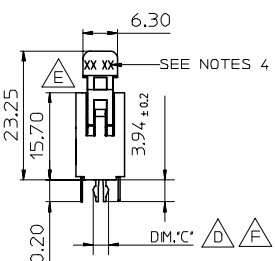
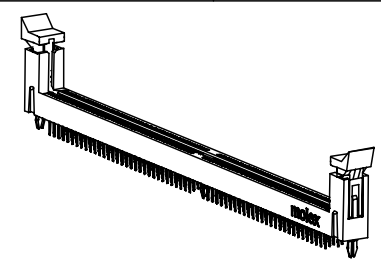
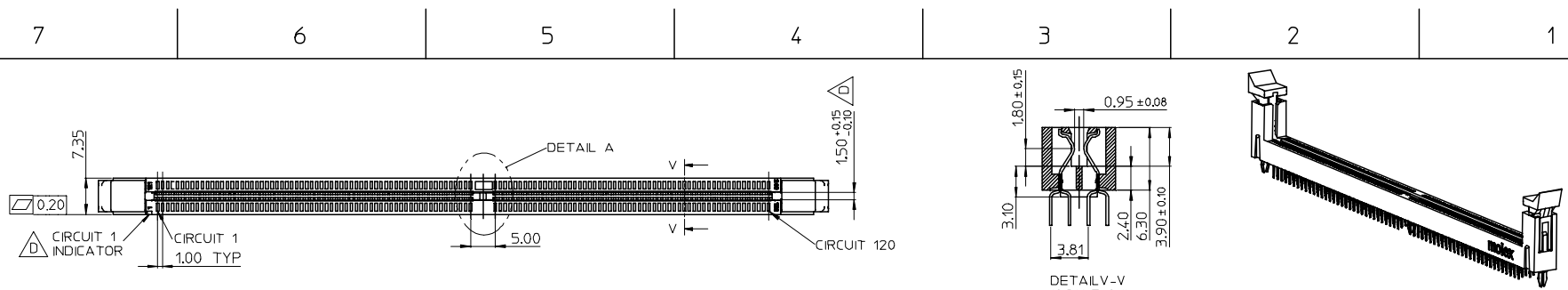
87705Series

Mates With

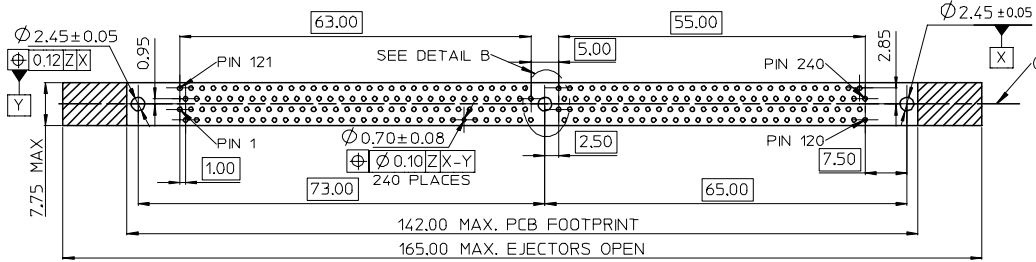
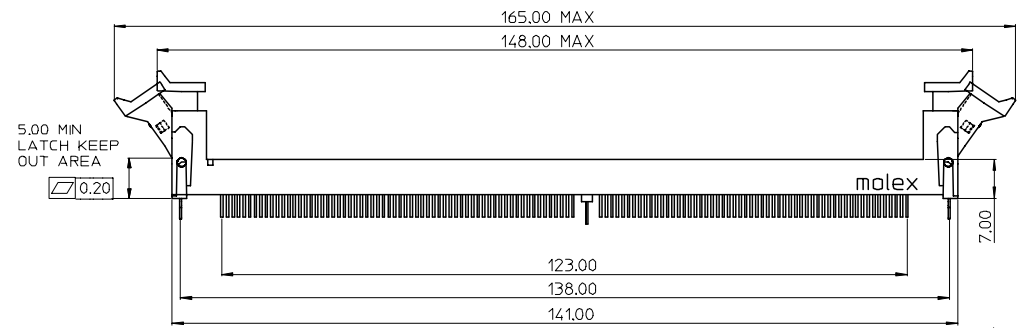
JEDEC standard 1.27mm modules

This document was generated on 04/13/2010

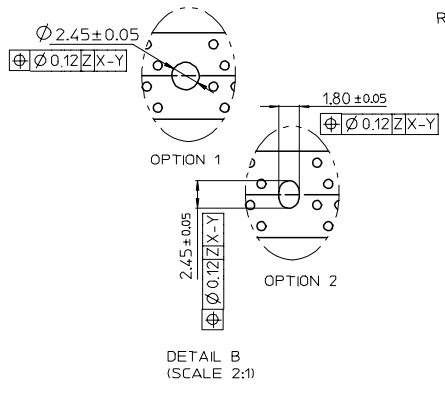
PLEASE CHECK WWW.MOLEX.COM FOR LATEST PART INFORMATION



| KEY LOCATION | VOLTAGE | DIM.'X' |
|--------------|---------|---------|
| LEFT | 2.5V | 1.50 |
| CENTER | 1.8V | 2.50 |



RECOMMENDED PCB LAYOUT
CONNECTOR SIDE











- NOTES:
- MATERIAL:
HOUSING: SEE TABLE ,GLASS FIBER FILLED UL94V-0,COLOR:SEE TABLE.
LATCH: POLYAMIDE, GLASS FIBER FILLED UL94V-0. COLOR : SEE TABLE.
FORKLOCK: BRASS
TERMINAL: SEE TABLE.
 - PLATING:
TERMINAL
CONTACT AREA: SEE TABLE.
SOLDER TAIL: 100 MICRONCH MIN. TIN.
UNDER PLATING: NICKEL OVERALL.
 - FORKLOCK
SOLDER AREA: 100 MICRONCH MIN. TIN.
UNDER PLATING: NICKEL OVERALL.
 - VOLTAGE: SEE TABLE
 - DATE CODE:XXXXYYWW
 - PRODUCT SPECIFICATION REFER TO PS-87705-801.
 - PACKAGING SPECIFICATION REFER TO PK-87705-801.
 - TEST SUMMARY:REFER TO TS-87705-801.
 - LEAD FREE AND ROHS COMPLIANT PRODUCT.



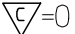
| | | | | | | | | |
|---|--|--|------------|-----------------------------------|--------------------|---|-------------------------------|-------------------------------|
| PER EWR2007-0102 EC NO: SH2007-0496 TDRWN:ALL IN 2007/03/20 CHKD: 2007/03/21 APPR:WWSCHANG 2007/03/22 | QUALITY SYMBOLS | GENERAL TOLERANCES (UNLESS SPECIFIED) | | DIMENSION STYLE MM ONLY | | SCALE 1:1 | DESIGN UNITS METRIC | THIRD ANGLE PROJECTION |
| | | 4 PLACES ± --- ± --- 3 PLACES ± --- ± --- 2 PLACES ± 0.25 ± --- 1 PLACE ± 0.25 ± --- ANGULAR ± 3 ° | mm INCH | DRAWN BY TOM | DATE 2004/07/19 | TITLE 1.0MM PITCH DDR II 240 CKTS WITH FORKLICK | | |
| DESCRIPTION REV | DRAFT WHERE APPLICABLE MUST REMAIN WITHIN DIMENSIONS | APPROVED BY WWSCHANG | | DATE 2004/07/19 | MOLEX INCORPORATED | | | |
| | | MATERIAL NO. SEE TABLE | | DOCUMENT NO. SD-87705-801 | | SHEET NO. 1 OF 10 | | |

7 6 5 4 3 2 1

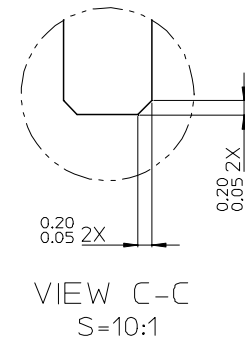
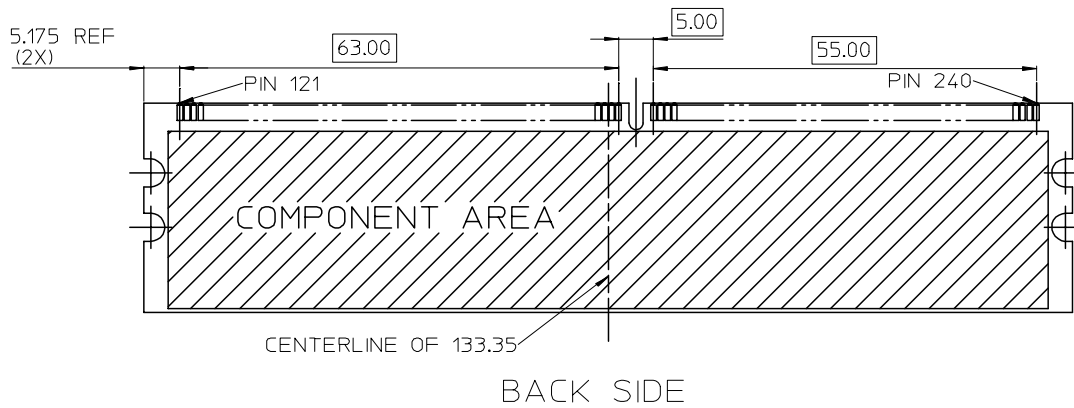
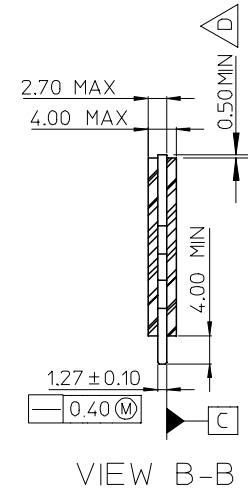
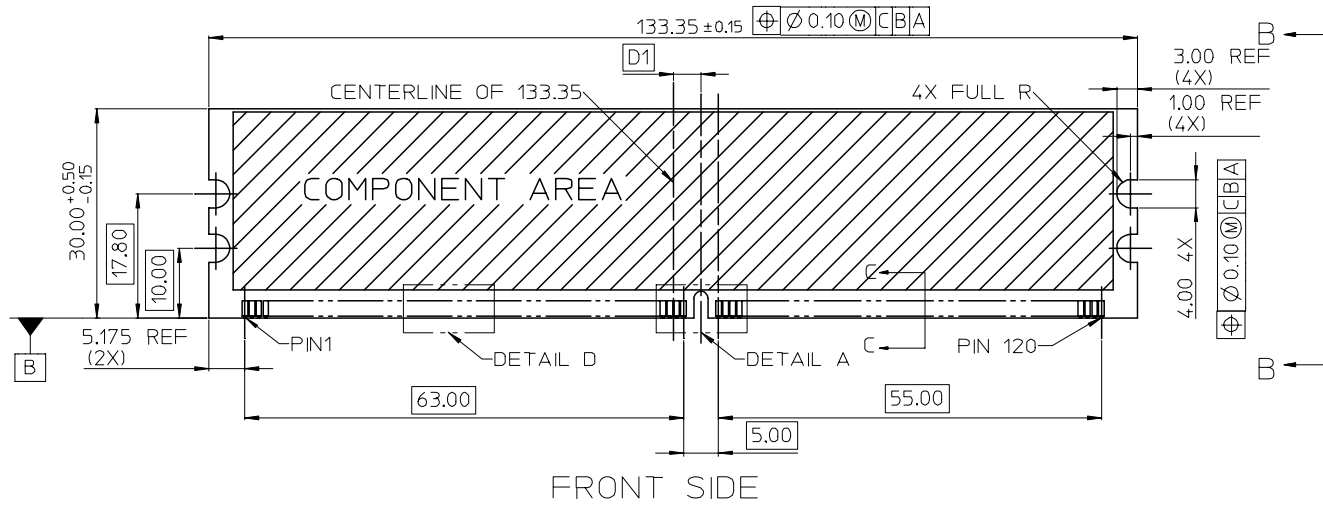
E
D
C
B
A

E
D
C
B
A

| MOLEX P/N | HOUSING MATERIAL | HOUSING COLOR | LATCH COLOR | TERMINAL MATERIAL | CONTACT PLATING | SOLDERTAIL LENGTH "B" | FORKLOCK WIDTH "C" | VOLTAGE |
|--|------------------|---------------|-------------|-------------------|-------------------|-----------------------|--|---------|
| 87705-7900 | NYLON66 | BLACK | WHITE | PHOSPHOR BROZNE | GOLD FLASH | 2.54 | 2.55±0.05 | 1.8 |
| 87705-7901 | | | | | 15 MICROINCH GOLD | | | |
| 87705-7902 | | | | | 30 MICROINCH GOLD | | | |
| 87705-7903 | NYLON46 | BLACK | WHITE | PHOSPHOR BROZNE | GOLD FLASH | 2.54 | 2.55±0.05 | 1.8 |
| 87705-7904 | | | | | 15 MICROINCH GOLD | | | |
| 87705-7905 | | | | | 30 MICROINCH GOLD | | | |
|  87705-7008 | NYLON66 | BLACK | WHITE | PHOSPHOR BROZNE | 15 MICROINCH GOLD | 3.18 |  2.70 ^{+0.10} _{-0.05} | 1.8 |
|  87705-7028 | | BLUE (287U) | | | | | | |
|  87705-7058 | | BLACK | BLACK | | | | | |
|  87705-7408 | NYLON46 | BLACK | WHITE | PHOSPHOR BROZNE | 15 MICROINCH GOLD | 3.18 |  2.70 ^{+0.10} _{-0.05} | 1.8 |
|  87705-7428 | | BLUE (287U) | | | | | | |
|  87705-7458 | | BLACK | BLACK | | | | | |

| | | | | | | | | | | |
|--|--------------------|---|--|-------|--|------------------------------|---|------------------------|--|--|
| SEE SHEET 1 EC NO: SH2007-0496 TDRWN: ALL IN 2007/03/20 CHKD: 2007/03/21 APPR: WWSCHANG 2007/03/22 | DESCRIPTION REV | QUALITY SYMBOLS | GENERAL TOLERANCES (UNLESS SPECIFIED) | | DIMENSION STYLE MM ONLY | | SCALE 1:1 | DESIGN UNITS METRIC |  THIRD ANGLE PROJECTION | |
| | |  = 0 | mm | INCH | DRAWN BY TOM | DATE 2004/07/19 | TITLE 1.0MM PITCH DDR II 240 CKTS WITH FORKLOCK | | | |
| | |  = 0 | 4 PLACES ± --- | ± --- | CHECKED BY ALL IN | DATE 2004/07/19 | | | | |
| | | | 3 PLACES ± --- | ± --- | APPROVED BY WWSCHANG | DATE 2004/07/19 | MOLEX INCORPORATED | | | |
| | | | 2 PLACES ± 0.25 | ± --- | MATERIAL NO. SEE TABLE | DOCUMENT NO. SD-87705-801 | | | | |
| | 1 PLACE ± 0.25 | ± --- | DRAFT WHERE APPLICABLE MUST REMAIN WITHIN DIMENSIONS | | THIS DRAWING CONTAINS INFORMATION THAT IS PROPRIETARY TO MOLEX INCORPORATED AND SHOULD NOT BE USED WITHOUT WRITTEN PERMISSION | | | | | |

6 5 4 3 2 1

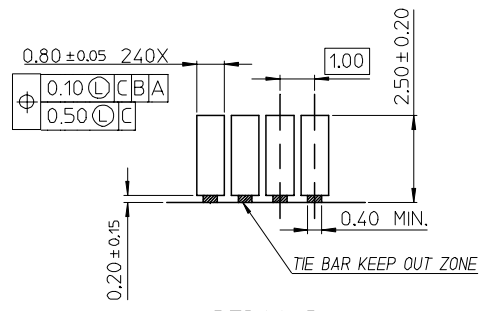


| | | | | | | | | | |
|--|-------------------------------|---------------------------------------|--|----------------------------|----------------------|---|---|------------------------|--|
| SEE SHEET 1 EC NO: SH2007-0496 TDRWN: ALL IN 2007/03/20 CHKD: 2007/03/21 APPR: WWSCHANG 2007/03/22 | QUALITY SYMBOLS ▽=0 ◻=0 | GENERAL TOLERANCES (UNLESS SPECIFIED) | | DIMENSION STYLE MM ONLY | | SCALE 1:1 | DESIGN UNITS METRIC | THIRD ANGLE PROJECTION | |
| | | | mm | INCH | DRAWN BY TOM | DATE 2004/07/19 | TITLE 1.0MM PITCH DDR II 240 CKTS WITH FORKLICK | | |
| | | 4 PLACES | ± --- | ± --- | CHECKED BY ALL IN | DATE 2004/07/19 | APPROVED BY WWSCHANG | | |
| | | 3 PLACES | ± --- | ± --- | DATE 2004/07/19 | DOCUMENT NO. SD-87705-801 | | | |
| | 2 PLACES | ± 0.25 | ± --- | MATERIAL NO. SEE TABLE | | SHEET NO. 2 OF 10 | | | |
| | 1 PLACE | ± 0.25 | ± --- | SIZE A4 | | THIS DRAWING CONTAINS INFORMATION THAT IS PROPRIETARY TO MOLEX INCORPORATED AND SHOULD NOT BE USED WITHOUT WRITTEN PERMISSION | | | |
| | ANGULAR ± 3 ° | | DRAFT WHERE APPLICABLE MUST REMAIN WITHIN DIMENSIONS | | | | | | |

7 6 5 4 3 2 1

E

E



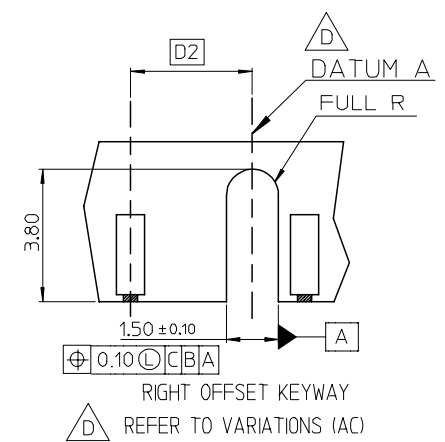
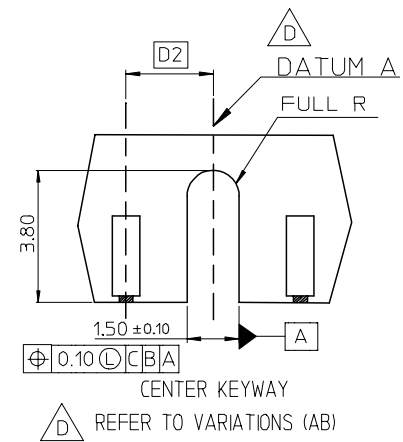
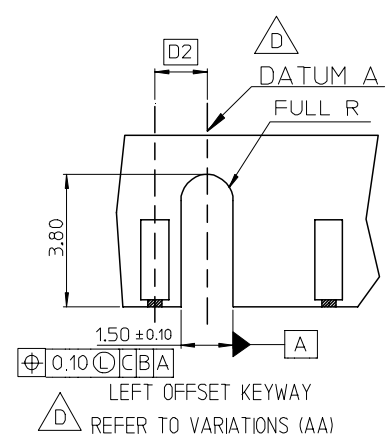
DETAIL D

△ D VARIATIONS

| VAR SYMBOL | AA | AB | AC |
|------------|------------|------------|------------|
| D1 | 3.00 BASIC | 4.00 BASIC | 5.00 BASIC |
| D2 | 1.50 BASIC | 2.50 BASIC | 3.50 BASIC |

D

D



DETAIL A S=5:1
CENTER KEY ZONE

C

C

THIS DESIGN IS BASED ON DESIGN OBJECTIVES AND IS STRICTLY TENTATIVE. IT MAY CHANGE BASED ON RESULTS OF ADDITIONS DESIGN REVIEWS AND VERIFICATIONS.





B


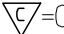


B

A

A





| | | | | | | | |
|--|--|---------------------------------------|---|--|--------------|------------------------|--|
| SEE SHEET 1 EC NO: SH2007-0496 TDRWN: ALL IN 2007/03/20 CHKD: 2007/03/21 APPR: WWSCHANG 2007/03/22 | QUALITY SYMBOLS | GENERAL TOLERANCES (UNLESS SPECIFIED) | DIMENSION STYLE | SCALE | DESIGN UNITS | THIRD ANGLE PROJECTION | |
| | ▽=0 ∇=0 | mm INCH | MM ONLY | | METRIC | | |
| | | 4 PLACES ± --- ± --- | DRAWN BY DATE | TITLE | | | |
| | | 3 PLACES ± --- ± --- | TOM 2004/07/19 | 1.0MM PITCH DDR II 240 CKTS WITH FORKLOCK | | | |
| | | 2 PLACES ± 0.25 ± --- | CHECKED BY DATE | MOLEX MOLEX INCORPORATED | | | |
| | 1 PLACE ± 0.25 ± --- | ALL IN 2004/07/19 | MATERIAL NO. DOCUMENT NO. SHEET NO. | | | | |
| | ANGULAR ± 3 ° | APPROVED BY DATE | SD-87705-801 3 OF 10 | | | | |
| | | WWSCHANG 2004/07/19 | THIS DRAWING CONTAINS INFORMATION THAT IS PROPRIETARY TO MOLEX INCORPORATED AND SHOULD NOT BE USED WITHOUT WRITTEN PERMISSION | | | | |
| | DRAFT WHERE APPLICABLE MUST REMAIN WITHIN DIMENSIONS | | | | | | |


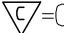



| 7 | 6 | 5 | 4 | 3 | 2 | 1 | | |
|------------|-------------------|---|-------------|-------------------|-------------------|-----------------------|---|---------|
| MOLEX P/N | HOUSING MATERIAL | HOUSING COLOR | LATCH COLOR | TERMINAL MATERIAL | CONTACT PLATING | SOLDERTAIL LENGTH "B" | FORKLOCK WIDTH "C" | VOLTAGE |
| 87705-7000 | NYLON66 | BLACK | WHITE | PHOSPHOR BROZNE | GOLD FLASH | 2.54 |   $2.70^{+0.10}_{-0.05}$ | 1.8 |
| 87705-7001 | | | | | 10 MICROINCH GOLD | | | |
| 87705-7002 | | | | | 15 MICROINCH GOLD | | | |
| 87705-7003 | | | | | GOLD FLASH | | | |
| 87705-7004 | | | | | 10 MICROINCH GOLD | | | |
| 87705-7005 | | | | | 15 MICROINCH GOLD | | | |
| 87705-7010 | | WHITE | | | GOLD FLASH | 2.54 | | |
| 87705-7011 | | | | | 10 MICROINCH GOLD | | | |
| 87705-7012 | | | | | 15 MICROINCH GOLD | | | |
| 87705-7013 | | | | | GOLD FLASH | | | |
| 87705-7014 | | | | | 10 MICROINCH GOLD | | | |
| 87705-7015 | | | | | 15 MICROINCH GOLD | | | |
| 87705-7020 | | BLUE (287U) | | | GOLD FLASH | 2.54 | | |
| 87705-7021 | | | | | 10 MICROINCH GOLD | | | |
| 87705-7022 | | | | | 15 MICROINCH GOLD | | | |
| 87705-7023 | | | | | GOLD FLASH | | | |
| 87705-7024 | | | | | 10 MICROINCH GOLD | | | |
| 87705-7025 | | | | | 15 MICROINCH GOLD | | | |
| 87705-7030 | |  | | | GOLD FLASH | 2.54 | | |
| 87705-7031 | | | | | 10 MICROINCH GOLD | | | |
| 87705-7032 | | | | | 15 MICROINCH GOLD | | | |
| 87705-7033 | | | | | GOLD FLASH | | | |
| 87705-7034 | | | | | 10 MICROINCH GOLD | | | |
| 87705-7035 | | | | | 15 MICROINCH GOLD | | | |
| 87705-7040 | |  | | | GOLD FLASH | 2.54 | | |
| 87705-7041 | | | | | 10 MICROINCH GOLD | | | |
| 87705-7042 | | | | | 15 MICROINCH GOLD | | | |
| 87705-7043 | | | | | GOLD FLASH | | | |
| 87705-7044 | | | | | 10 MICROINCH GOLD | | | |
| 87705-7045 | | | | | 15 MICROINCH GOLD | | | |
| 87705-7060 | | ORANGE (151C) | | | GOLD FLASH | 2.54 | | |
| 87705-7061 | | | | | 10 MICROINCH GOLD | | | |
| 87705-7062 | | | | | 15 MICROINCH GOLD | | | |
| 87705-7063 | | | | | GOLD FLASH | | | |
| 87705-7064 | 10 MICROINCH GOLD | | | | | | | |
| 87705-7065 | 15 MICROINCH GOLD | | | | | | | |
| 87705-7066 | GOLD FLASH | | | | | | | |
| 87705-7067 | 30u"Gold | | 2.54 | | | | | |

| | | | | | | | | | | |
|--|---|---------------------------------------|-------|----------------------------|-------|--|------------------------|--|--|--|
| SEE SHEET 1 EC NO: SH2007-0496 TDRWN: ALL IN 2007/03/20 CHKD: 2007/03/21 APPR: WWSCHANG 2007/03/22 | QUALITY SYMBOLS  = 0  = 0 | GENERAL TOLERANCES (UNLESS SPECIFIED) | | DIMENSION STYLE MM ONLY | | SCALE 1:1 | DESIGN UNITS METRIC |  THIRD ANGLE PROJECTION | | |
| | | | | mm | INCH | DRAWN BY TOM | DATE 2004/07/19 | TITLE 1.0MM PITCH DDR II 240 CKTS WITH FORKLOCK | | |
| | | | | 4 PLACES ± --- | ± --- | CHECKED BY ALL IN | DATE 2004/07/19 | | | |
| | | | | 3 PLACES ± --- | ± --- | APPROVED BY WWSCHANG | DATE 2004/07/19 |  MOLEX INCORPORATED MATERIAL NO. SEE TABLE DOCUMENT NO. SD-87705-801 SHEET NO. 4 OF 10 | | |
| | | | | 2 PLACES ± 0.25 | ± --- | DRAFT WHERE APPLICABLE MUST REMAIN WITHIN DIMENSIONS | | | | |
| | | 1 PLACE ± 0.25 | ± --- | ANGULAR ± 3 ° | | THIS DRAWING CONTAINS INFORMATION THAT IS PROPRIETARY TO MOLEX INCORPORATED AND SHOULD NOT BE USED WITHOUT WRITTEN PERMISSION | | | | |

E
D
C
B
A

E
D
C
B
A

| MOLEX P/N | HOUSING MATERIAL | HOUSING COLOR | LATCH COLOR | TERMINAL MATERIAL | CONTACT PLATING | SOLDERTAIL LENGTH "B" | FORKLOCK WIDTH "C" | VOLTAGE |
|------------|-------------------|---|-------------|-------------------|-------------------|-----------------------|---|---------|
| 87705-7100 | NYLON66 | BLACK | WHITE | BRASS | GOLD FLASH | 2.54 |   2.70 ^{+0.10} _{-0.05} | 1.8 |
| 87705-7101 | | | | | 10 MICROINCH GOLD | | | |
| 87705-7102 | | | | | 15 MICROINCH GOLD | | | |
| 87705-7103 | | | | | GOLD FLASH | | | |
| 87705-7104 | | | | | 10 MICROINCH GOLD | | | |
| 87705-7105 | | | | | 15 MICROINCH GOLD | | | |
| 87705-7110 | | WHITE | | | GOLD FLASH | 2.54 | | |
| 87705-7111 | | | | | 10 MICROINCH GOLD | | | |
| 87705-7112 | | | | | 15 MICROINCH GOLD | | | |
| 87705-7113 | | | | | GOLD FLASH | | | |
| 87705-7114 | | | | | 10 MICROINCH GOLD | | | |
| 87705-7115 | | | | | 15 MICROINCH GOLD | | | |
| 87705-7120 | | BLUE (287U) | | | GOLD FLASH | 2.54 | | |
| 87705-7121 | | | | | 10 MICROINCH GOLD | | | |
| 87705-7122 | | | | | 15 MICROINCH GOLD | | | |
| 87705-7123 | | | | | GOLD FLASH | | | |
| 87705-7124 | | | | | 10 MICROINCH GOLD | | | |
| 87705-7125 | | | | | 15 MICROINCH GOLD | | | |
| 87705-7130 | |  GREEN (348C) | | | GOLD FLASH | 2.54 | | |
| 87705-7131 | | | | | 10 MICROINCH GOLD | | | |
| 87705-7132 | | | | | 15 MICROINCH GOLD | | | |
| 87705-7133 | | | | | GOLD FLASH | | | |
| 87705-7134 | | | | | 10 MICROINCH GOLD | | | |
| 87705-7135 | | | | | 15 MICROINCH GOLD | | | |
| 87705-7140 | |  PURPLE (2736U) | | | GOLD FLASH | 2.54 | | |
| 87705-7141 | | | | | 10 MICROINCH GOLD | | | |
| 87705-7142 | | | | | 15 MICROINCH GOLD | | | |
| 87705-7143 | | | | | GOLD FLASH | | | |
| 87705-7144 | 10 MICROINCH GOLD | | | | | | | |
| 87705-7145 | 15 MICROINCH GOLD | | | | | | | |

| SEE SHEET 1 EC NO: SH2007-0496 TDRWN: ALL IN 2007/03/20 CHKD: 2007/03/21 APPR: WWSCHANG 2007/03/22 | DESCRIPTION REV | QUALITY SYMBOLS | GENERAL TOLERANCES (UNLESS SPECIFIED) | DIMENSION STYLE | SCALE | DESIGN UNITS | THIRD ANGLE PROJECTION | | | | | | | | | | | | | | | |
|--|--|--|---|--|-------|--------------|------------------------|-------|-------|----------|-------|-------|----------|--------|-------|---------|--------|-------|---------|-----|--------|---|
| | |  = 0  = 0 | <table border="1"> <tr> <th></th> <th>mm</th> <th>INCH</th> </tr> <tr> <td>4 PLACES</td> <td>± ---</td> <td>± ---</td> </tr> <tr> <td>3 PLACES</td> <td>± ---</td> <td>± ---</td> </tr> <tr> <td>2 PLACES</td> <td>± 0.25</td> <td>± ---</td> </tr> <tr> <td>1 PLACE</td> <td>± 0.25</td> <td>± ---</td> </tr> </table> | | mm | INCH | 4 PLACES | ± --- | ± --- | 3 PLACES | ± --- | ± --- | 2 PLACES | ± 0.25 | ± --- | 1 PLACE | ± 0.25 | ± --- | MM ONLY | 1:1 | METRIC |  |
| | | | mm | INCH | | | | | | | | | | | | | | | | | | |
| | | 4 PLACES | ± --- | ± --- | | | | | | | | | | | | | | | | | | |
| | | 3 PLACES | ± --- | ± --- | | | | | | | | | | | | | | | | | | |
| 2 PLACES | ± 0.25 | ± --- | | | | | | | | | | | | | | | | | | | | |
| 1 PLACE | ± 0.25 | ± --- | | | | | | | | | | | | | | | | | | | | |
| | ANGULAR ± 3 ° | DRAWN BY: TOM DATE: 2004/07/19 CHECKED BY: ALL IN DATE: 2004/07/19 APPROVED BY: WWSCHANG DATE: 2004/07/19 | TITLE | 1.0MM PITCH DDR II 240 CKTS WITH FORKLOCK | | | | | | | | | | | | | | | | | | |
| | DRAFT WHERE APPLICABLE MUST REMAIN WITHIN DIMENSIONS | MATERIAL NO.: SEE TABLE DOCUMENT NO.: SD-87705-801 SHEET NO.: 5 OF 10 |  MOLEX INCORPORATED | | | | | | | | | | | | | | | | | | | |
| | | SIZE:  4 THIS DRAWING CONTAINS INFORMATION THAT IS PROPRIETARY TO MOLEX INCORPORATED AND SHOULD NOT BE USED WITHOUT WRITTEN PERMISSION | | | | | | | | | | | | | | | | | | | | |

7 6 5 4 3 2 1

E

D

C

B

A

E


D

C

B

A

| MOLEX P/N | HOUSING MATERIAL | HOUSING COLOR | LATCH COLOR | TERMINAL MATERIAL | CONTACT PLATING | SOLDERTAIL LENGTH "B" | FORKLOCK WIDTH "C" | VOLTAGE |
|------------|-------------------|---------------|-------------|-------------------|-------------------|-----------------------|---|---------|
| 87705-7200 | NYLON66 | BLACK | WHITE | PHOSPHOR BROZNE | GOLD FLASH | 2.54 | $\triangle_D \triangle_F$ $2.70^{+0.10}_{-0.05}$ | 2.5 |
| 87705-7201 | | | | | 10 MICROINCH GOLD | | | |
| 87705-7202 | | | | | 15 MICROINCH GOLD | | | |
| 87705-7203 | | | | | GOLD FLASH | | | |
| 87705-7204 | | | | | 10 MICROINCH GOLD | | | |
| 87705-7205 | | | | | 15 MICROINCH GOLD | | | |
| 87705-7210 | | WHITE | | | GOLD FLASH | 2.54 | | |
| 87705-7211 | | | | | 10 MICROINCH GOLD | | | |
| 87705-7212 | | | | | 15 MICROINCH GOLD | | | |
| 87705-7213 | | | | | GOLD FLASH | | | |
| 87705-7214 | | | | | 10 MICROINCH GOLD | | | |
| 87705-7215 | | | | | 15 MICROINCH GOLD | | | |
| 87705-7220 | | BLUE (287U) | | | GOLD FLASH | 2.54 | | |
| 87705-7221 | | | | | 10 MICROINCH GOLD | | | |
| 87705-7222 | | | | | 15 MICROINCH GOLD | | | |
| 87705-7223 | | | | | GOLD FLASH | | | |
| 87705-7224 | | | | | 10 MICROINCH GOLD | | | |
| 87705-7225 | | | | | 15 MICROINCH GOLD | | | |
| 87705-7230 | | \triangle_D | | | GOLD FLASH | 2.54 | | |
| 87705-7231 | | | | | 10 MICROINCH GOLD | | | |
| 87705-7232 | | | | | 15 MICROINCH GOLD | | | |
| 87705-7233 | | | | | GOLD FLASH | | | |
| 87705-7234 | | | | | 10 MICROINCH GOLD | | | |
| 87705-7235 | | | | | 15 MICROINCH GOLD | | | |
| 87705-7240 | | \triangle_D | | | GOLD FLASH | 2.54 | | |
| 87705-7241 | | | | | 10 MICROINCH GOLD | | | |
| 87705-7242 | | | | | 15 MICROINCH GOLD | | | |
| 87705-7243 | | | | | GOLD FLASH | | | |
| 87705-7244 | 10 MICROINCH GOLD | | | | | | | |
| 87705-7245 | 15 MICROINCH GOLD | | | | | | | |

| | | | | | | | | | | |
|--|--|---------------------------------------|--|----------------------------|---------------------------|--|--|------------------------|--|--|
| SEE SHEET 1 EC NO: SH2007-0496 TDRWN: ALL IN 2007/03/20 CHKD: 2007/03/21 APPR: WWSCHANG 2007/03/22 | QUALITY SYMBOLS $\blacktriangledown = 0$ $\triangle_C = 0$ | GENERAL TOLERANCES (UNLESS SPECIFIED) | | DIMENSION STYLE MM ONLY | | SCALE 1:1 | DESIGN UNITS METRIC | THIRD ANGLE PROJECTION | | |
| | | | mm | INCH | DRAWN BY TOM | DATE 2004/07/19 | TITLE 1.0MM PITCH DDR II 240 CKTS WITH FORKLOCK | | | |
| | | 4 PLACES | \pm --- | \pm --- | CHECKED BY ALL IN | DATE 2004/07/19 | | | | |
| | | 3 PLACES | \pm --- | \pm --- | APPROVED BY WWSCHANG | DATE 2004/07/19 |  MOLEX INCORPORATED DOCUMENT NO. SD-87705-801 SHEET NO. 6 OF 10 | | | |
| | | 2 PLACES | ± 0.25 | \pm --- | MATERIAL NO. SEE TABLE | | | | | |
| 1 PLACE | ± 0.25 | \pm --- | DRAFT WHERE APPLICABLE MUST REMAIN WITHIN DIMENSIONS | | SIZE $\triangle 4$ | THIS DRAWING CONTAINS INFORMATION THAT IS PROPRIETARY TO MOLEX INCORPORATED AND SHOULD NOT BE USED WITHOUT WRITTEN PERMISSION | | | | |

6 5 4 3 2 1

7 6 5 4 3 2 1

E

E

D

D

C

C

B

B

| MOLEX P/N | HOUSING MATERIAL | HOUSING COLOR | LATCH COLOR | TERMINAL MATERIAL | CONTACT PLATING | SOLDERTAIL LENGTH "B" | FORKLOCK WIDTH "C" | VOLTAGE | |
|------------|-------------------|-------------------|----------------|-------------------|-------------------|-----------------------|---|------------|------|
| 87705-7300 | NYLON66 | BLACK | WHITE | BRASS | GOLD FLASH | 2.54 | $\triangle_D \triangle_F$ 2.70 ^{+0.10} / _{-0.05} | 2.5 | |
| 87705-7301 | | | | | 10 MICROINCH GOLD | | | | |
| 87705-7302 | | | | | 15 MICROINCH GOLD | | | | |
| 87705-7303 | | | | | GOLD FLASH | | | | |
| 87705-7304 | | | | | 10 MICROINCH GOLD | | | | |
| 87705-7305 | | | | | 15 MICROINCH GOLD | | | | |
| 87705-7310 | | GOLD FLASH | | | 2.54 | | | | |
| 87705-7311 | | 10 MICROINCH GOLD | | | | | | | |
| 87705-7312 | | 15 MICROINCH GOLD | | | | | | | |
| 87705-7313 | | GOLD FLASH | | | | | | | |
| 87705-7314 | | 10 MICROINCH GOLD | | | | | | | |
| 87705-7315 | | 15 MICROINCH GOLD | | | | | | | |
| 87705-7320 | | GOLD FLASH | 2.54 | | | | | | |
| 87705-7321 | | 10 MICROINCH GOLD | | | | | | | |
| 87705-7322 | | 15 MICROINCH GOLD | | | | | | | |
| 87705-7323 | | GOLD FLASH | | | | | | | |
| 87705-7324 | | 10 MICROINCH GOLD | | | | | | | |
| 87705-7325 | | 15 MICROINCH GOLD | | | | | | | |
| 87705-7330 | | \triangle_D | BLUE (287U) | WHITE | BRASS | GOLD FLASH | 2.54 | | |
| 87705-7331 | | 10 MICROINCH GOLD | | | | | | | |
| 87705-7332 | | 15 MICROINCH GOLD | | | | | | | |
| 87705-7333 | | GOLD FLASH | | | | | | | |
| 87705-7334 | | 10 MICROINCH GOLD | | | | | | | |
| 87705-7335 | | 15 MICROINCH GOLD | | | | | | | |
| 87705-7340 | | \triangle_D | PURPLE (2736U) | | | WHITE | BRASS | GOLD FLASH | 2.54 |
| 87705-7341 | | 10 MICROINCH GOLD | | | | | | | |
| 87705-7342 | | 15 MICROINCH GOLD | | | | | | | |
| 87705-7343 | | GOLD FLASH | | | | | | | |
| 87705-7344 | 10 MICROINCH GOLD | | | | | | | | |
| 87705-7345 | 15 MICROINCH GOLD | | | | | | | | |

A

A

| | | | | | | | | | | |
|--|---|---------------------------------------|--|----------------------------|--|------------------------------|---|------------------------|--|--|
| SEE SHEET 1 EC NO: SH2007-0496 TDRWN: ALL IN 2007/03/20 CHKD: 2007/03/21 APPR: WWSCHANG 2007/03/22 | DESCRIPTION QUALITY SYMBOLS $\blacktriangledown=0$ $\triangle=0$ | GENERAL TOLERANCES (UNLESS SPECIFIED) | | DIMENSION STYLE MM ONLY | | SCALE 1:1 | DESIGN UNITS METRIC | THIRD ANGLE PROJECTION | | |
| | | | mm | INCH | DRAWN BY TOM | DATE 2004/07/19 | TITLE 1.0MM PITCH DDR II 240 CKTS WITH FORKLOCK | | | |
| | | | 4 PLACES ± --- | ± --- | CHECKED BY ALL IN | DATE 2004/07/19 | | | | |
| | | | 3 PLACES ± --- | ± --- | APPROVED BY WWSCHANG | DATE 2004/07/19 | MOLEX INCORPORATED | | | |
| | | | 2 PLACES ± 0.25 | ± --- | MATERIAL NO. SEE TABLE | DOCUMENT NO. SD-87705-801 | | | | |
| | 1 PLACE ± 0.25 | ± --- | DRAFT WHERE APPLICABLE MUST REMAIN WITHIN DIMENSIONS | | THIS DRAWING CONTAINS INFORMATION THAT IS PROPRIETARY TO MOLEX INCORPORATED AND SHOULD NOT BE USED WITHOUT WRITTEN PERMISSION | | | | | |

6 5 4 3 2 1

7 6 5 4 3 2 1














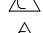


E
D
C
B
A

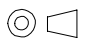


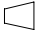


E
D
C
B
A

| MOLEX P/N | HOUSING MATERIAL | HOUSING COLOR | LATCH COLOR | TERMINAL MATERIAL | CONTACT PLATING | SOLDERTAIL LENGTH "B" | FORKLOCK WIDTH "C" | VOLTAGE | | | | | |
|------------|------------------|---------------|-------------|-------------------|-------------------|-----------------------|---|---------|-------|--|--|--|--|
| 87705-7420 | NYLON46 | BLUE (287U) | WHITE | PHOSPHOR BROZNE | GOLD FLASH | 2.54 | $\triangle_D \triangle_F$ $2.70^{+0.10}_{-0.05}$ | 1.8 | | | | | |
| 87705-7421 | | | | | 10 MICROINCH GOLD | | | | | | | | |
| 87705-7422 | | | | | 15 MICROINCH GOLD | | | | | | | | |
| 87705-7423 | | | | | GOLD FLASH | 3.00 | | | | | | | |
| 87705-7424 | | | | | 10 MICROINCH GOLD | | | | | | | | |
| 87705-7425 | | | | | 15 MICROINCH GOLD | | | | | | | | |
| 87705-7426 | | BLACK | WHITE | PHOSPHOR BROZNE | GOLD FLASH | 2.30 | | | | | | | |
| 87705-7407 | | | | | WHITE | 30 MICROINCH GOLD | | | 2.54 | | | | |
| 87705-7417 | | | | | BLUE (287U) | | | | | | | | |
| 87705-7427 | | | | | GREEN (348C) | | | | | | | | |
| 87705-7437 | | | | | PURPLE (2736U) | BLACK | | | WHITE | | | | |
| 87705-7447 | | | | | BLACK | | | | | | | | |
| 87705-7457 | | | | | ORANGE (151C) | | | | | | | | |
| 87705-7467 | | | | | | | | | | | | | |

| | | | | | | | | | | |
|--|---|---------------------------------------|--|----------------------------|--|------------------------------|---|------------------------|--|--|
| SEE SHEET 1 EC NO: SH2007-0496 TDRWN: ALL IN 2007/03/20 CHKD: 2007/03/21 APPR: WWSCHANG 2007/03/22 | DESCRIPTION QUALITY SYMBOLS $\blacktriangledown = 0$ $\triangle_C = 0$ | GENERAL TOLERANCES (UNLESS SPECIFIED) | | DIMENSION STYLE MM ONLY | | SCALE 1:1 | DESIGN UNITS METRIC | THIRD ANGLE PROJECTION | | |
| | | | mm | INCH | DRAWN BY TOM | DATE 2004/07/19 | TITLE 1.0MM PITCH DDR II 240 CKTS WITH FORKLOCK | | | |
| | | 4 PLACES | \pm --- | \pm --- | CHECKED BY ALL IN | DATE 2004/07/19 | | | | |
| | | 3 PLACES | \pm --- | \pm --- | APPROVED BY WWSCHANG | DATE 2004/07/19 | MOLEX INCORPORATED | | | |
| | | 2 PLACES | ± 0.25 | \pm --- | MATERIAL NO. SEE TABLE | DOCUMENT NO. SD-87705-801 | | | | |
| 1 PLACE | ± 0.25 | \pm --- | DRAFT WHERE APPLICABLE MUST REMAIN WITHIN DIMENSIONS | | THIS DRAWING CONTAINS INFORMATION THAT IS PROPRIETARY TO MOLEX INCORPORATED AND SHOULD NOT BE USED WITHOUT WRITTEN PERMISSION | | | | | |

6 5 4 3 2 1

| MOLEX P/N | HOUSING MATERIAL | HOUSING COLOR | LATCH COLOR | TERMINAL MATERIAL | CONTACT PLATING | SOLDERTAIL LENGTH "B" | FORKLOCK WIDTH "C" | VOLTAGE |
|---|------------------|---------------|-------------|-------------------|-------------------|-----------------------|--|---------|
| 87705-7050 | NYLON66 | BLACK | BLACK | PHOSPHOR BROZNE | GOLD FLASH | 2.54 |   $2.70^{+0.10}_{-0.05}$ | 1.8 |
| 87705-7051 | | | | | 10 MICROINCH GOLD | | | |
| 87705-7052 | | | | | 15 MICROINCH GOLD | | | |
| 87705-7053 | | | | | GOLD FLASH | 3.00 | | |
| 87705-7054 | | | | | 10 MICROINCH GOLD | | | |
| 87705-7055 | | | | | 15 MICROINCH GOLD | | | |
| 87705-7056 | | | | | GOLD FLASH | 2.30 | | |
|  87705-7400 | NYLON46 | BLACK | WHITE | | GOLD FLASH | 2.54 | | |
|  87705-7401 | | | | | 10 MICROINCH GOLD | | | |
|  87705-7402 | | | | | 15 MICROINCH GOLD | | | |
|  87705-7403 | | | | | GOLD FLASH | 3.00 | | |
|  87705-7404 | | | | | 10 MICROINCH GOLD | | | |
|  87705-7405 | | | | | 15 MICROINCH GOLD | | | |
|  87705-7406 | | | GOLD FLASH | | 2.30 | | | |
|  87705-7450 | | | BLACK | | GOLD FLASH | 2.54 | | |
|  87705-7451 | | | | | 10 MICROINCH GOLD | | | |
|  87705-7452 | | | | | 15 MICROINCH GOLD | | | |
|  87705-7453 | | | | | GOLD FLASH | 3.00 | | |
|  87705-7454 | | | | | 10 MICROINCH GOLD | | | |
|  87705-7455 | | | | | 15 MICROINCH GOLD | | | |
|  87705-7456 | | | | | GOLD FLASH | 2.30 | | |

| | | | | | | | | | |
|---|---|---------------------------------------|--|----------------------------|---|---|--|--|--|
| SEE SHEET 1 EC NO: SH2007-0496 TIDRWN: ALL IN 2007/03/20 CHKD: 2007/03/21 APPR: WWSCHANG 2007/03/22 | QUALITY SYMBOLS  = 0  = 0 | GENERAL TOLERANCES (UNLESS SPECIFIED) | | DIMENSION STYLE MM ONLY | | SCALE 1:1 | DESIGN UNITS METRIC |   THIRD ANGLE PROJECTION | |
| | | | mm | INCH | DRAWN BY TOM | DATE 2004/07/19 | TITLE 1.0MM PITCH DDR II 240 CKTS WITH FORKLOCK | | |
| | | 4 PLACES | ± --- | ± --- | CHECKED BY ALL IN | DATE 2004/07/19 | | | |
| | | 3 PLACES | ± --- | ± --- | APPROVED BY WWSCHANG | DATE 2004/07/19 |  MOLEX INCORPORATED DOCUMENT NO. SD-87705-801 SHEET NO. 9 OF 10 | | |
| | | 2 PLACES | ± 0.25 | ± --- | MATERIAL NO. SEE TABLE | | | | |
| 1 PLACE | ± 0.25 | ± --- | DRAFT WHERE APPLICABLE MUST REMAIN WITHIN DIMENSIONS | | SIZE  4 | THIS DRAWING CONTAINS INFORMATION THAT IS PROPRIETARY TO MOLEX INCORPORATED AND SHOULD NOT BE USED WITHOUT WRITTEN PERMISSION | | | |