

**PLEASE CHECK WWW.MOLEX.COM FOR LATEST PART INFORMATION**

**Part Number:** [0353130260](#)  
**Status:** **Active**  
**Description:** 3.96mm (.156") Pitch Header, Vertical, Shrouded, with Positive Lock, 2 Circuits, PA Polyamide (Nylon) 6/6, Glass-filled, Natural

**Documents:**

[3D Model](#) [Product Specification PS-35156-004 \(PDF\)](#)  
[Packaging Specification \(PDF\)](#) [RoHS Certificate of Compliance \(PDF\)](#)  
[Drawing \(PDF\)](#)

**Agency Certification**

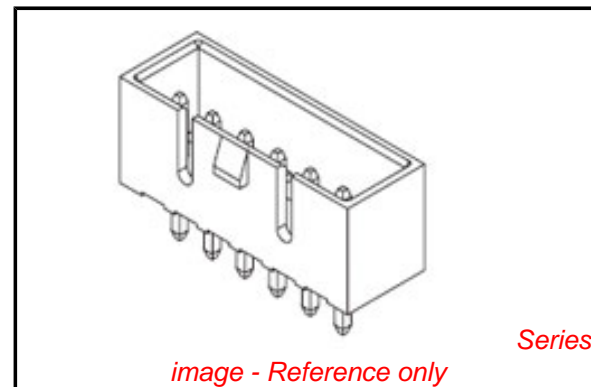
CSA LR19980  
 UL E29179

**General**

Product Family PCB Headers  
 Series [35313](#)  
 Application Wire-to-Board  
 Product Name N/A

**Physical**

Breakaway No  
 Circuits (Loaded) 2  
 Circuits (maximum) 2  
 Color - Resin Natural  
 Durability (mating cycles max) 30  
 First Mate / Last Break No  
 Flammability 94V-0  
 Glow-Wire Compliant No  
 Guide to Mating Part No  
 Keying to Mating Part None  
 Lock to Mating Part Yes  
 Material - Plating Mating Tin  
 Material - Plating Termination Tin  
 Material - Resin Nylon  
 Number of Rows 1  
 Orientation Vertical  
 PC Tail Length (in) 0.134 In  
 PC Tail Length (mm) 3.40 mm  
 PCB Locator No  
 PCB Retention None  
 PCB Thickness Recommended (in) 0.062 In  
 PCB Thickness Recommended (mm) 1.60 mm  
 Packaging Type Bag  
 Pitch - Mating Interface (in) 0.156 In  
 Pitch - Mating Interface (mm) 3.96 mm  
 Pitch - Term. Interface (in) 0.156 In  
 Pitch - Term. Interface (mm) 3.96 mm  
 Plating min: Mating (µin) 200  
 Plating min: Mating (µm) 5  
 Plating min: Termination (µin) 200  
 Plating min: Termination (µm) 5  
 Polarized to Mating Part Yes  
 Polarized to PCB No  
 Shrouded Partial  
 Stackable No



**EU RoHS**

**ELV and RoHS Compliant**  
**REACH SVHC**  
 Not Reviewed  
**Halogen-Free Status**

**China RoHS**



**Not Halogen-Free**

**Need more information on product environmental compliance?**

Email [productcompliance@molex.com](mailto:productcompliance@molex.com)  
 For a multiple part number RoHS Certificate of Compliance, [click here](#)

Please visit the [Contact Us](#) section for any non-product compliance questions.

**Search Parts in this Series**

[35313Series](#)

**Mates With**

[35156 Wire-to-Board Housing](#)

Temperature Range - Operating -40°C to +105°C  
Termination Interface: Style Through Hole

**Electrical**

Current - Maximum per Contact 7A  
Voltage - Maximum 250V

**Material Info**

**Reference - Drawing Numbers**

Product Specification PS-35156-004  
Sales Drawing SD-35313-001

This document was generated on 04/15/2010

**PLEASE CHECK [WWW.MOLEX.COM](http://WWW.MOLEX.COM) FOR LATEST PART INFORMATION**

DO NOT SCALE DRAWING  
DIMENSION IN METRIC

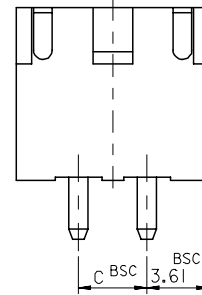
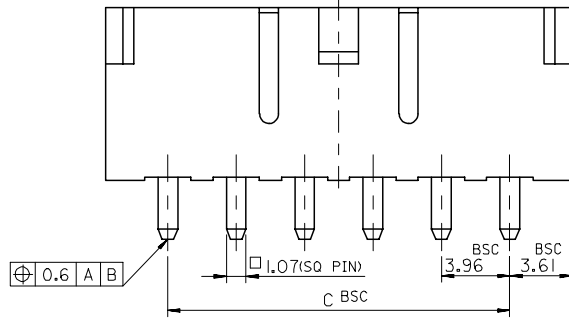
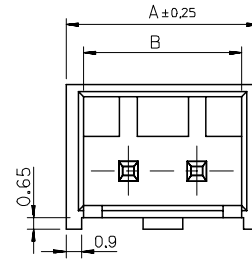
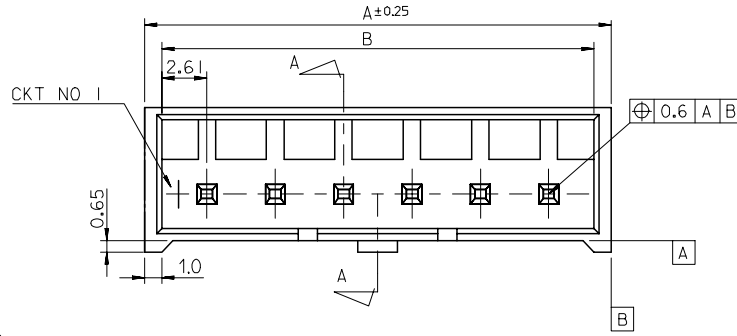
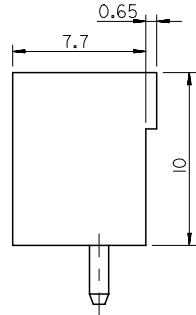
PROJECT NO.

SIMILAR ITEM

DWG. 10.

SD-35313-001

8 7 6 5 4 3 2 1



2 CKT ONLY

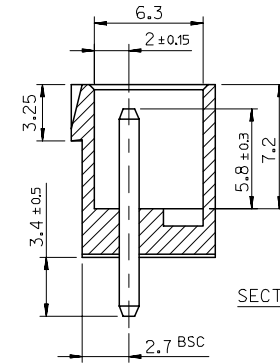
NOTE

1. MATERIAL : WAFER : NYLON66, GLASS FILLED 20%  
PIN : BRASS, TIN PLATED

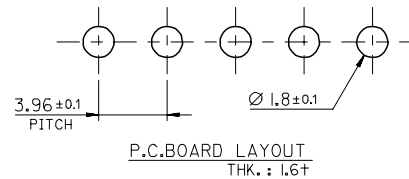
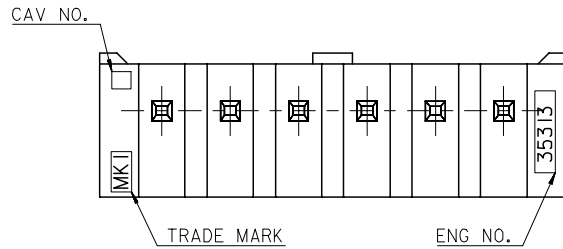
2. LEGEND

35313-\*\*\* 6 \*  
COLOR : 0 - NATURAL  
1 - BLACK  
2 - RED  
3 - YELLOW  
4 - BLUE  
CKT NO.(02,03,04...)

3. THIS PRODUCT SHALL BE COMPLIED WITH  
RoHS COMPATIBLE(LEAD FREE SOLDERABILITY)



SECTION A-A



43.56	48.78	50.78	35313-126*	12
39.6	44.82	46.82	-116*	11
35.64	40.86	42.86	-106*	10
31.68	36.9	38.9	-096*	9
27.72	32.94	34.94	-086*	8
23.76	28.98	30.98	-076*	7
19.8	25.02	27.02	-066*	6
15.84	21.06	23.06	-056*	5
11.88	17.1	19.1	-046*	4
7.92	13.14	15.14	-036*	3
3.96	9.18	11.18	35313-026*	2
C	B	A	ENG NO.	CKT NO.

REVISED EC NO. KOR2006-0105 DRWN: K.S.KIM 06/03/23 CHK: K.S.KIM APPR: Y.SOO/KIM	DESCRIPTION	QUALITY SYMBOLS	GENERAL TOLERANCES: (UNLESS SPECIFIED)	SCALE 3.5:1	DESIGN UNITS <input checked="" type="checkbox"/> mm <input type="checkbox"/> INCH	THIRD ANGLE PROJECTION	DIMENSIONS: <input type="checkbox"/> mm <input type="checkbox"/> INCH <input type="checkbox"/> mm <input checked="" type="checkbox"/> ONLY		SHT	REV
		MAJOR =	CRITICAL =	mm	INCH	DRAWN BY & DATE K.S.KIM 040513	TITLE: 3.96 PITCH W/B CONN. WAFER ASS'Y (WITH LOCK)			
C	REV	4 PLACES	±0.	±	CHECKED BY & DATE Y.SOO/KIM	Molex MOLEX INCORPORATED				
		3 PLACES	±0.	±	APPROVED BY & DATE C.W.LEE	MATERIAL NO. SEE CHART	DRAWING NO. SD-35313-001	SHEET NO. 1 OF 1		
		2 PLACES	±0.2	±	CAD FILENAME					
		1 PLACE	±0.2	±	DRAFT WHERE APPLICABLE MUST REMAIN WITHIN DIMENSIONS		THIS DRAWING CONTAINS INFORMATION THAT IS PROPRIETARY TO MOLEX INCORPORATED AND SHOULD NOT BE USED WITHOUT WRITTEN PERMISSION.		SIZE B	
		ANGULAR: ±		°					MX-A3	

8 7 6 5 4 3 2 1