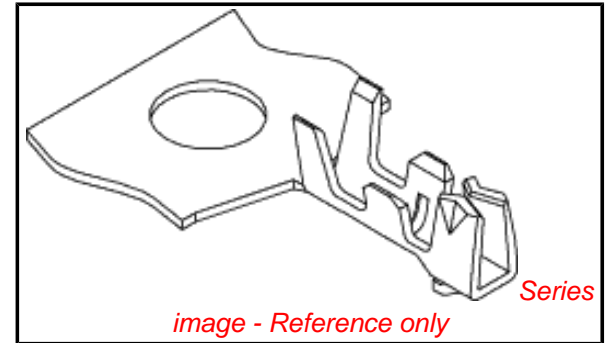


PLEASE CHECK WWW.MOLEX.COM FOR LATEST PART INFORMATION

Part Number: **0500798000**
Status: **Active**
Overview: picoblade
Description: 1.25mm (.049") Pitch PicoBlade™ Crimp Terminal, 26-28 AWG, Reel

Documents:

Drawing (PDF)	Product Specification PS-51021-023 (PDF)
Product Specification PS-51021-001 (PDF)	Product Specification PS-51021-025 (PDF)
Product Specification PS-51021-002 (PDF)	Product Specification PS-51021-026 (PDF)
Product Specification PS-51021-009 (PDF)	Product Specification PS-51021-027 (PDF)
Product Specification PS-51021-010 (PDF)	Product Specification PS-51021-028 (PDF)
Product Specification PS-51021-011 (PDF)	RoHS Certificate of Compliance (PDF)
Product Specification PS-51021-022 (PDF)	



General

Product Family	Crimp Terminals
Series	<u>50079</u>
Crimp Quality Equipment	Yes
Overview	<u>picoblade</u>
Product Name	PicoBlade™

Physical

Gender	Female
Material - Metal	Phosphor Bronze
Material - Plating Mating	Tin
Material - Plating Termination	Tin
Packaging Type	Reel
Plating min: Mating (µin)	36
Plating min: Mating (µm)	0.90
Plating min: Termination (µin)	36
Plating min: Termination (µm)	0.90
Termination Interface: Style	Crimp or Compression
Wire Insulation Diameter	0.50-1.04mm (.020-.041")
Wire Size AWG	26, 28
Wire Size mm²	N/A

Material Info

Reference - Drawing Numbers

Packaging Specification	SPK-50079-001
Product Specification	PS-51021-001, PS-51021-002, PS-51021-009, PS-51021-010, PS-51021-011, PS-51021-022, PS-51021-023, PS-51021-025, PS-51021-026, PS-51021-027, PS-51021-028, RPS-501576-001, RPS-51021-001, RPS-51021-002, RPS-51021-003, RPS-51021-004, RPS-51021-006, RPS-51021-007, RPS-51021-008, RPS-51021-010, RPS-51021-011, RPS-51021-013, RPS-51021-014, RPS-51021-015, RPS-51021-016, RPS-51021-017, RPS-51021-018, RPS-51021-021, RPS-51021-023, RPS-51021-024, RPS-51021-025, RPS-51021-026, RPS-51021-027, RPS-51021-028, RPS-51021-029, RPS-51021-030, RPS-51021-031, RPS-51021-032, RPS-51021-033, RPS-51021-034, RPS-51021-037, RPS-51021-038, RPS-51021-039, RPS-51021-040, RPS-51021-041, RPS-51021-043, RPS-51021-044, RPS-51021-045,

EU RoHS
ELV and RoHS
Compliant
REACH SVHC
Contains SVHC: No
Halogen-Free
Status
Halogen-Free

China RoHS



Need more information on product environmental compliance?

Email productcompliance@molex.com
 For a multiple part number RoHS Certificate of Compliance, [click here](#)

Please visit the [Contact Us](#) section for any non-product compliance questions.

Search Parts in this Series
50079Series

Mates With
50125 Crimp Terminal, 50133 Crimp Terminal

Use With
51021 Crimp Housing

Application Tooling | FAQ
Tooling specifications and manuals are found by selecting the products below. Crimp Height Specifications are then contained in the Application Tooling Specification document.

Global	Product #
Description	
Hand Crimp Tool for <u>0638110000</u> Series 50058 and 50079 Terminals on Metal Strip	
Hand Crimp Tool for <u>0638190300</u> 1.25mm (.049") Pitch PicoBlade™ Crimp	

Sales Drawing

RPS-51021-046, RPS-51021-047, RPS-51021-048,
RPS-51021-050, RPS-51021-051, RPS-51021-052,
RPS-51021-053, RPS-51021-054, RPS-51021-055,
RPS-51021-056, RPS-51021-057, RPS-51021-058,
RPS-51021-059, RPS-51021-060, RPS-51021-061,
RPS-51021-062, RPS-51021-063, RPS-51021-064,
RPS-51021-065, RPS-51021-066, RPS-51021-067,
RPS-51021-068, RPS-51021-071, RPS-51021-072,
RPS-51021-073, RPS-51021-074, RPS-51021-076,
RPS-51021-077, RPS-51021-078, RPS-51021-079,
RPS-51021-083, RPS-51021-084, RPS-51021-085,
RPS-51021-086, RPS-51021-089, RPS-51021-091,
RPS-51021-092, RPS-51021-096, RPS-51021-097,
RPS-51021-101, RPS-53398-002, RPS-53398-037,
RPS-53398-038
SD-50079-001, SD-51021-002

Terminals, 26-32 AWG Hand Crimp Tool for <u>0638190400</u> 1.25mm (.049") Pitch PicoBlade™ Crimp Terminals, 26-32 AWG FineAdjust™ <u>0639003700</u> 1.25mm (.049") Pitch Crim Terminal, 28-32 AWG T2 Terminator <u>0639103700</u> Tooling Die Extraction Tool <u>0011030043</u>	
Japan	
Description	Product #
Applicator for M21 1A Bench Press, 26-32 AWG, for 50058 and 50079 Crimp Terminal Side-Feed Applicator For Full-Auto Machine Extraction Tool	<u>0570673000</u> <u>0570673200</u> <u>0570726000</u>

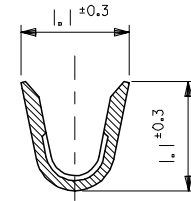
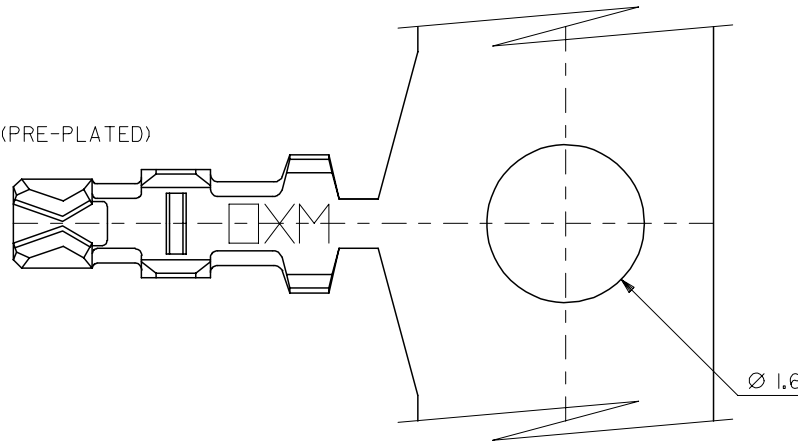
This document was generated on 05/19/2010

PLEASE CHECK WWW.MOLEX.COM FOR LATEST PART INFORMATION

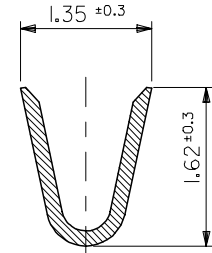
10 9 8 7 6 5 4 3 2 1

注記
NOTES

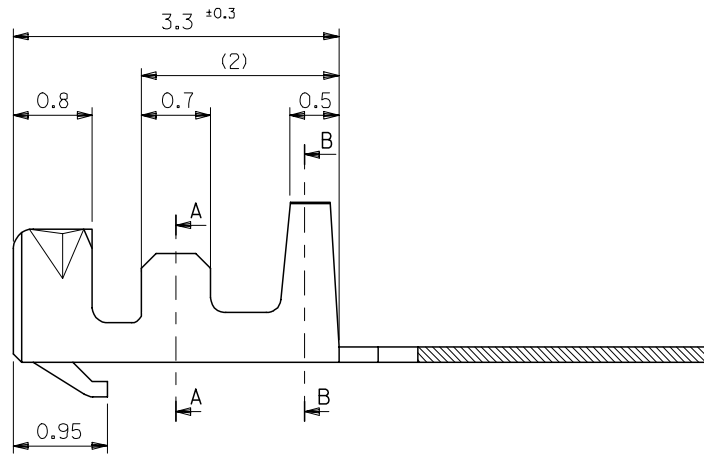
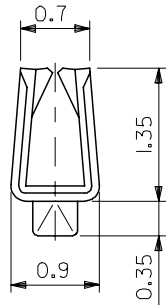
1. 適合ハウジング：51021シリーズ
APPLICABLE HOUSING : 51021 SERIES
2. メッキ仕様 PLATING
錫 0.9μm MIN. リフロー処理 (前メッキ)
TIN 0.9μm MIN. REFLOW TREATMENT (PRE-PLATED)



SECT. A-A



SECT. B-B



50079-8100	バラ状 LOOSE
50079-8000	連鎖状 CHAIN
MATERIAL NO.	端子形状 FORM

MODEL NO. 50079-8*00

材料 MATERIAL リン青銅 (t=0.15) PHOSPHOR BRONZE 仕上げ FINISH —#— 適用電線範囲 WIRE RANGE AWG #26-28 被覆外径 INS. RANGE φ0.5-1.04	REVISED EC NO: J2005-1535 DRAWN:SUZUKI 2004/11/30 CHKD:KTOJO 2004/11/30 APPR:NUKITA 2004/12/06 G	GENERAL TOLERANCES (UNLESS SPECIFIED)		DIMENSION STYLE MM ONLY	SCALE 20:1	DESIGN UNITS METRIC	THIRD ANGLE PROJECTION	
		10 UNDER	±0.2	DRAWN BY HHIRAMOT	DATE 92/10/21	TITLE 1.25 WIRE TO BOARD CONN. CRIMP REC. TERMINAL -LEAD FREE-		
		10 OVER 30 UNDER	±0.25	CHECKED BY SKUNISHI	DATE 98/07/07			
		30 OVER	±0.3	APPROVED BY MFUKUSHI	DATE 98/07/07	MATERIAL NO.	DOCUMENT NO. SD-50079-001	SHEET NO. 1 OF 1
ANGULAR ±3 °		DRAFT WHERE APPLICABLE MUST REMAIN WITHIN DIMENSIONS		SIZE A3	THIS DRAWING CONTAINS INFORMATION THAT IS PROPRIETARY TO MOLEX INCORPORATED AND SHOULD NOT BE USED WITHOUT WRITTEN PERMISSION			

10 9 8 7 6 5 4 3 2 1

F

F

E

E

D

D

C

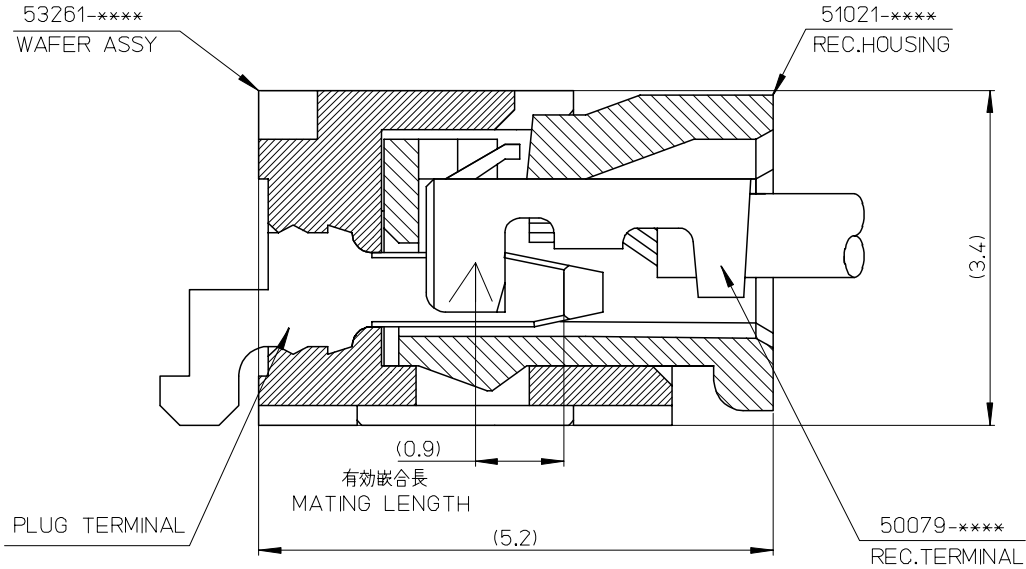
C

B

B

A

A



53261-****	WAFER ASSY	MODEL NO./MATERIAL NO.
50079-****	TERMINAL	
51021-****	HOUSING	

RELEASED EC NO: J2006-2426 DRWN: A0YAGI 2006/02/02 CHKD: YMAEDA 2006/02/03 APPR: NUKITA 2006/02/07	GENERAL TOLERANCES (UNLESS SPECIFIED)		DIMENSION STYLE MM ONLY		SCALE ---	DESIGN UNITS METRIC	THIRD ANGLE PROJECTION	
	10 UNDER	± ---	DRAWN BY Y. A0YAGI	DATE 2006/01/30	TITLE 1.25 W-TO-B CONN. 51021,53261 MATING CROSS SECTION			
	10 OVER 30 UNDER	± ---	CHECKED BY Y. MAEDA	DATE 2006/01/30	MOLEX INCORPORATED			
	30 OVER	± ---	APPROVED BY N. UKITA	DATE 2006/01/30	DOCUMENT NO. SD-51021-002			
	ANGULAR	± --- °	MATERIAL NO. SEE CHART		SHEET NO. 1 OF 1			
0	DRAFT WHERE APPLICABLE MUST REMAIN WITHIN DIMENSIONS		SIZE A3		THIS DRAWING CONTAINS INFORMATION THAT IS PROPRIETARY TO MOLEX INCORPORATED AND SHOULD NOT BE USED WITHOUT WRITTEN PERMISSION			

9

8

7

6

5

4

3

2