

**PLEASE CHECK WWW.MOLEX.COM FOR LATEST PART INFORMATION**

**Part Number:** [0002081101](#)  
**Status:** **Active**  
**Description:** Claspcn™ Crimp Terminal Socket, Tin (Sn) Plated Brass Contact, 16-24 AWG, Reel

**Documents:**

[Drawing \(PDF\)](#) [RoHS Certificate of Compliance \(PDF\)](#)

**Agency Certification**

CSA LR19980  
 UL E29179

**General**

Product Family Crimp Terminals  
 Series [1881](#)  
 Crimp Quality Equipment Yes  
 Product Name Claspcn™

**Physical**

Gender Female  
 Material - Metal Brass  
 Material - Plating Mating Tin  
 Material - Plating Termination Tin  
 Packaging Type Reel  
 Plating min: Mating (µin) 20  
 Plating min: Mating (µm) 0.50  
 Plating min: Termination (µin) 20  
 Plating min: Termination (µm) 0.50  
 Termination Interface: Style Crimp or Compression  
 Wire Insulation Diameter 3.50mm (.138") max.  
 Wire Size AWG 16, 18, 20, 22, 24  
 Wire Size mm² N/A

**Material Info**

Old Part Number 1881-2C1A

**Reference - Drawing Numbers**

Product Specification RPS-1881-001, RPS-1881-002  
 Sales Drawing SD-1881-\*

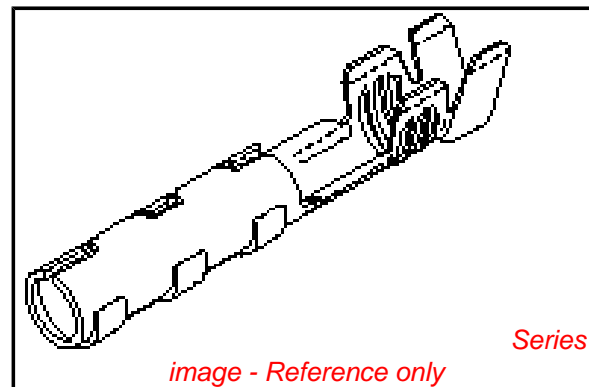


image - Reference only

**EU RoHS**

**ELV and RoHS  
 Compliant**

**REACH SVHC**

**Contains SVHC: No**

**Halogen-Free**

**Status**

**Halogen-Free**

**China RoHS**



**Need more information on product  
 environmental compliance?**

Email [productcompliance@molex.com](mailto:productcompliance@molex.com)  
 For a multiple part number RoHS Certificate of  
 Compliance, [click here](#)

Please visit the [Contact Us](#) section for any  
 non-product compliance questions.

**Search Parts in this Series**

[1881Series](#)

**Mates With**

[16-06-0005](#)

**Application Tooling | FAQ**

*Tooling specifications and manuals are  
 found by selecting the products below.  
 Crimp Height Specifications are then  
 contained in the Application Tooling  
 Specification document.*

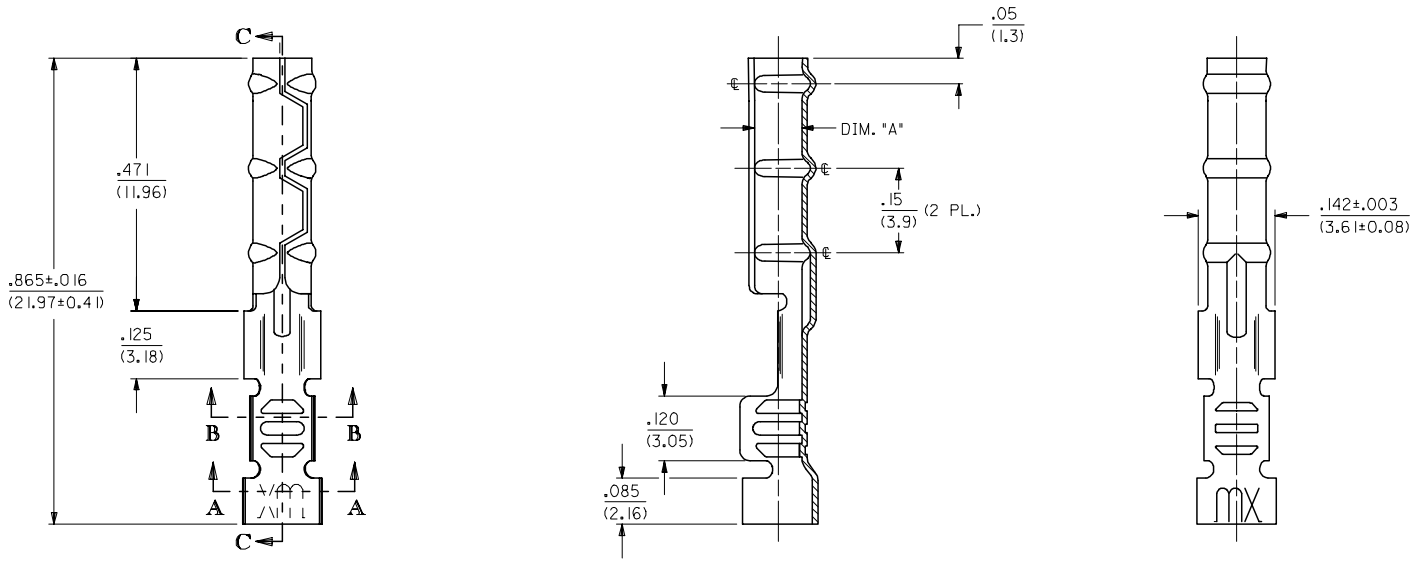
**Global**

Description	Product #
Extraction Tool	<a href="#">0011030006</a>
Terminator Die	<a href="#">0011402083</a>
Mini-Mac™	<a href="#">0638924200</a>
Applicator	

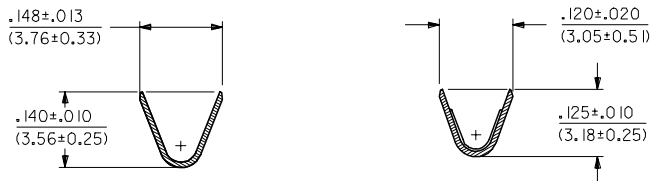
13 12 11 10 9 8 7 6 5 4 3 2 1

J I H G F E D C B A

1881-2\*\*\* TERMINAL SHOWN (16-24 AWG)  
SEE SHEET 2 FOR 1881-3\*\*\* TERMINAL



SECTION C-C



SECTION A-A

SECTION B-B

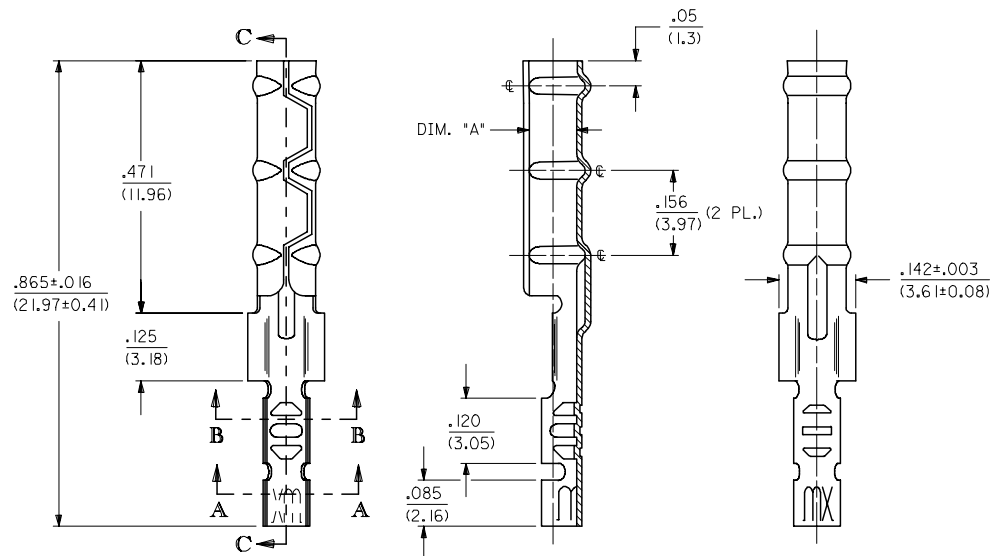
2	L1
1	L1
SHT/REV	

UPDATE TITLE BLOCK EC NO: UCP2006-0215 2005/08/05 DRAWN: JLONE 2005/08/10 CHKD: ADERR 2005/08/10 APPR: FSM TH 2005/08/10 REVISIONS L1	QUALITY SYMBOLS ▽=0 ▽=0	GENERAL TOLERANCES (UNLESS SPECIFIED) <table border="1"> <tr> <th></th> <th>mm</th> <th>INCH</th> </tr> <tr> <td>4 PLACES</td> <td>± .10</td> <td>± .004</td> </tr> <tr> <td>3 PLACES</td> <td>± .12</td> <td>± .005</td> </tr> <tr> <td>2 PLACES</td> <td>± .15</td> <td>± .006</td> </tr> <tr> <td>1 PLACE</td> <td>± .20</td> <td>± .008</td> </tr> </table> ANGULAR ±1/2°		mm	INCH	4 PLACES	± .10	± .004	3 PLACES	± .12	± .005	2 PLACES	± .15	± .006	1 PLACE	± .20	± .008	DIMENSION STYLE IN/MM DRAWN BY: JWC DATE: 3/11/91 CHECKED BY: RW DATE: 3/11/91 APPROVED BY: JWF DATE: 3/11/91 MATERIAL NO.	SCALE: 6:1 DESIGN UNITS: INCH THIRD ANGLE PROJECTION	TITLE: CRIMP TERMINAL SOCKET, CLASPCON MOLEX INCORPORATED DOCUMENT NO. SD-1881-* SHEET NO. 1 OF 2
		mm	INCH																	
	4 PLACES	± .10	± .004																	
	3 PLACES	± .12	± .005																	
2 PLACES	± .15	± .006																		
1 PLACE	± .20	± .008																		
DRAFT WHERE APPLICABLE MUST REMAIN WITHIN DIMENSIONS		SEE CHART	THIS DRAWING CONTAINS INFORMATION THAT IS PROPRIETARY TO MOLEX INCORPORATED AND SHOULD NOT BE USED WITHOUT WRITTEN PERMISSION																	

12 11 10 9 8 7 6 5 4 3 2 1

CHART			
PART NUMBER	ENG. NUMBER	DIMENSION "A" (DIA.)	
02-08-1102	1881-2L1A	.085/.090 (2.16/2.29)	
02-08-1101	1881-2C1A		
02-08-1106	1881-2L1B	.083/.088 (2.11/2.24)	OBSOLETE
02-08-1105	1881-2C1B		OBSOLETE
02-08-1104	1881-3L1A	.085/.090 (2.16/2.29)	
02-08-1103	1881-3C1A		
02-08-1107	1881-4C1A	.085/.090 (2.16/2.29)	OBSOLETE
02-08-1108	1881-4L1A		OBSOLETE

1881-3\*\*\* TERMINAL SHOWN (24-30 AWG)  
SEE SHEET 1 FOR 1881-2\*\*\* TERMINAL



**LEGEND**

1881-\*\*\*  
 CRIMP STYLE  
 2 = 16-24 AWG  
 3 = 24-30 AWG  
 4 = 22 AWG  
 BARREL I.D.  
 A = .085/.090 BARREL I.D.  
 FORM  
 L = LOOSE  
 C = CHAIN  
 FINISH  
 (\*P\* PRECEEDING FINISH NO. DESIGNATES PREPLATED MATERIAL)  
 1 = P901 - HOT TIN DIP: .000020/(0.0005) MIN.

- NOTES:  
 1. MATERIAL: CARTRIDGE BRASS  
 2. FINISH: SEE LEGEND  
 3. PRODUCT SPECIFICATION: N/A  
 4. PACKAGING SPECIFICATION: N/A  
 5. 1881 "CLASPCON" SERIES TERMINAL WITH THE STANDARD BARREL I.D. IS INTENDED FOR MATING TO .093/(2.36) DIA. P.C. BOARD PINS.  
 6. INITIAL EXTRACTION FORCE TO BE 4.0±1.5 LBS. FROM AN .093/.092 / (2.36/2.34) DIA. PIN AND 2 LBS. MIN. AFTER THE 10TH EXTRACTION ON STANDARD BARREL I.D.

**SECTION A-A**

**SECTION B-B**

OBSOLETE 02-08-1102 EC NO: UCP2006-0215 DRWN: JLONE 2005/08/05 CHKD: ADERR 2005/08/10 APPR: FSM TH 2005/08/10 L1	REVISION DESCRIPTION	QUALITY SYMBOLS ◻=0 ▽=0	GENERAL TOLERANCES (UNLESS SPECIFIED)	DIMENSION STYLE IN/MM	SCALE 6:1	DESIGN UNITS INCH	THIRD ANGLE PROJECTION
			mm INCH	DRAWN BY DATE JWC 3/11/91	TITLE CRIMP TERMINAL SOCKET, CLASPCON		
			4 PLACES ± --- ± --- 3 PLACES ± --- ± .010 2 PLACES ± 0.25 ± .014 1 PLACE ± 0.36 ± --- ANGULAR ±1/2°	CHECKED BY DATE RW 3/11/91			
			DRAFT WHERE APPLICABLE MUST REMAIN WITHIN DIMENSIONS	APPROVED BY DATE JWF 3/11/91	MATERIAL NO. SD-1881-*	DOCUMENT NO. SHEET NO. 2 OF 2	