

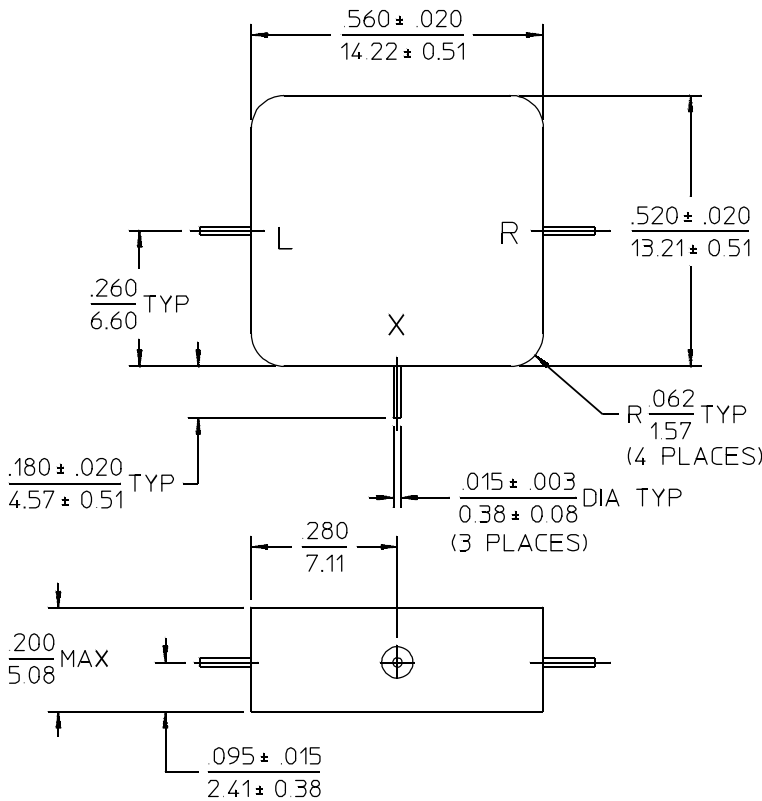


PRINCIPAL SPECIFICATIONS

Model Number	RF/LO Frequency, GHz	IF Frequency, Range, (-1 dB)	LO Drive, dBm, Nom.	Conversion Loss, dB,		Port Isolation, Min.			Polarity Sense
				Max.	Typ.	L-R dB	L-X dB	R-X dB	
DMF-2S-7000	4 - 18	DC - 2.5 GHz	+10	8.5	6.5	25	15	15	Negative

All specifications are as measured in a 50Ω system, at nominal LO power, in a down converter application.

Flatpack Outline S-style



NOTES: 1. Tolerance on 3 place decimals ±.010(.25) except as noted.
2. Dimensions in inches over millimeters.

29Apr96

GENERAL SPECIFICATIONS

Impedance: 50 Ω nom.
 Input Intercept Point: +13 dBm, typ.
 (each tone -10 dBm)
 1 dB Comp. Point: 0 dBm input, typ.
 CW Input Power: 300 mW @ 25°C
 (Derate linearly to 0 mW @ 125°C)
 Weight: 0.25 oz (7 g) nom.
 Operating Temperature: -55° to +85°C

General Notes:

1. The DMF-2S-7000 Double Balanced Mixer covers the frequency range of 4 to 18 GHz using microwave techniques and specially selected diodes to achieve a 2.5 GHz bandwidth with other desirable high performance characteristics.
2. Merrimac offers a broad selection of Double Balanced Mixers ideal for a variety of signal processing functions with frequencies ranging from 20 kHz to 20 GHz and for applications from routine to very special.
3. Merrimac mixers comply with MIL-M-28837 and may be supplied screened for compliance with additional specifications for military and space applications requiring the highest reliability.