

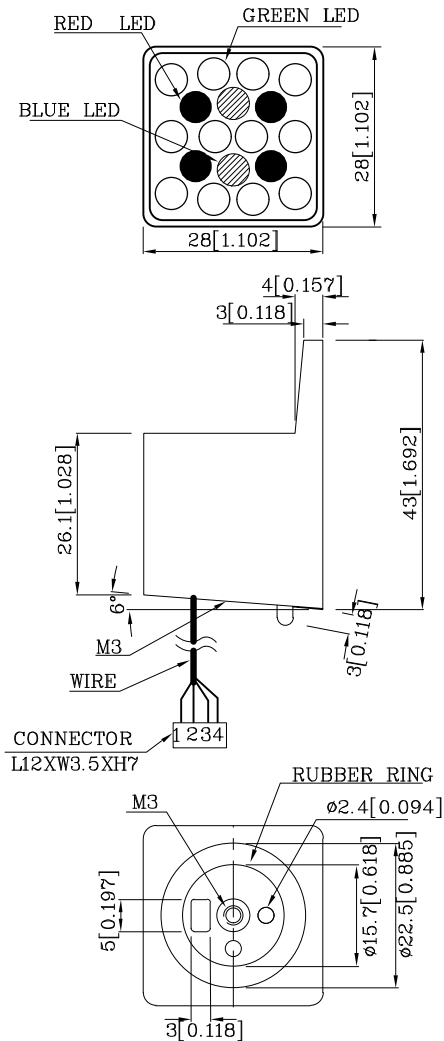
PRELIMINARY SPEC



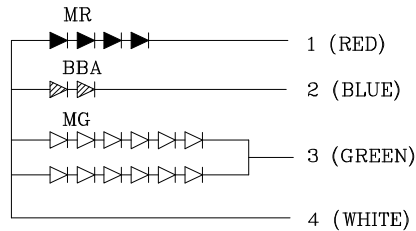
**ATTENTION**  
 OBSERVE PRECAUTIONS  
 FOR HANDLING  
 ELECTROSTATIC  
 DISCHARGE  
 SENSITIVE  
 DEVICES

**Features**

- HIGH VISIBILITY.
- WATER PROOF PACKAGE WITH HOOD SUITABLE FOR OUTDOOR AND INDOOR INFORMATION BOARDS.
- CAN PRODUCE ANY COLOR IN VISIBLE SPECTRUM, INCLUDING WHITE LIGHT.
- RoHS COMPLIANT.



LMR17W-11.7x4PCS  
 LBA17W-11.7x2PCS  
 LMG17W-11.7x12PCS



Notes:

1. All dimensions are in millimeters (inches).
2. Tolerance is  $\pm 0.25(0.01)$  unless otherwise noted.
3. Specifications are subject to change without notice.



**Electrical / Optical Characteristics at TA=25°C**

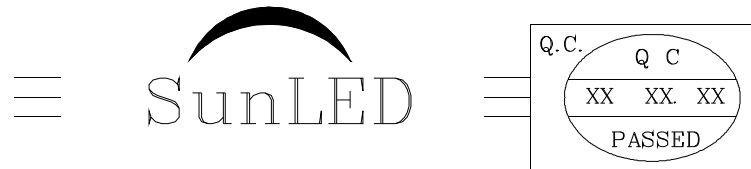
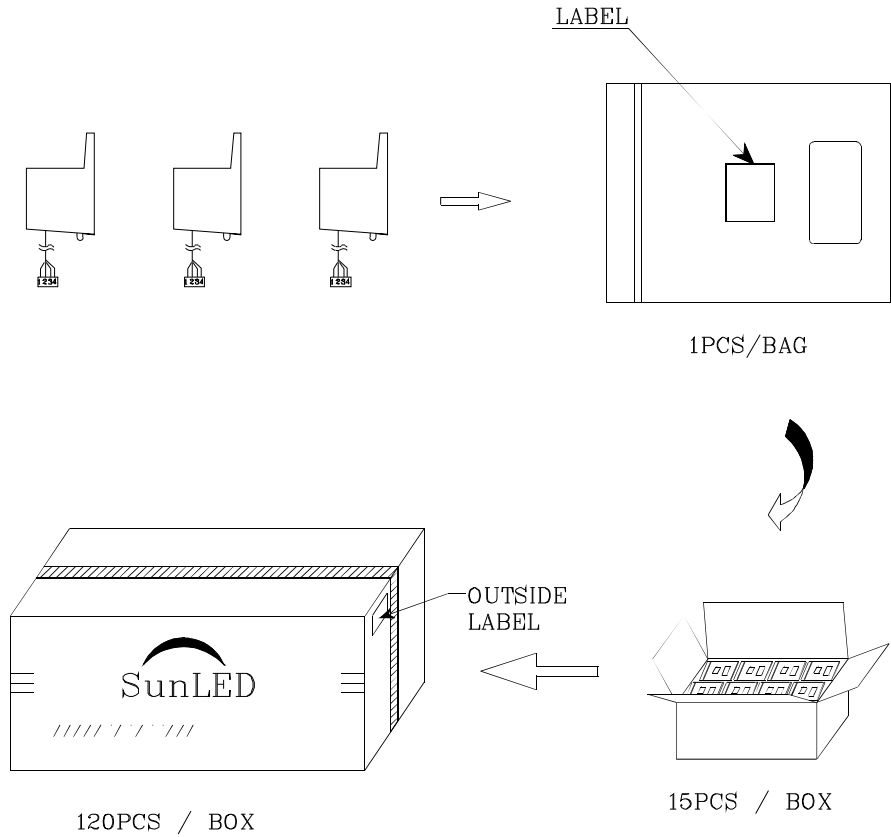
| Symbol | Parameter                | Device          | Type. | Min | Typ. | Max.    | Units     | Test Conditions |
|--------|--------------------------|-----------------|-------|-----|------|---------|-----------|-----------------|
| IV     | Luminous Intensity       | K4MR2BBA12MGW88 | MR    | 900 | 1790 | -       | mcd       | IF=20mA         |
|        |                          |                 | BBA   | 280 | 647  | -       |           | IF=20mA         |
|        |                          |                 | MG    | 650 | 1195 | -       |           | IF=40mA         |
| 201/2  | Viewing Angle            |                 | -     | -   | 40   | -       | deg       | -               |
| VF     | Forward Voltage          |                 | MR    | -   | 7.4  | 10      | V         | IF=20mA         |
|        |                          |                 | BBA   | -   | 6.4  | 8.0     |           | IF=20mA         |
|        |                          |                 | MG    | -   | 13.2 | 15      |           | IF=40mA         |
| Ipeak  | Peak Wavelength          |                 | MR    | -   | 660  | -       | nm        | IF= 20mA        |
|        |                          |                 | BBA   | -   | 468  | -       |           | IF=20mA         |
|        |                          | MG              | -     | 565 | -    | IF=40mA |           |                 |
| ID     | Dominant Wavelength      | MR              | -     | 640 | -    | nm      | IF= 20 mA |                 |
|        |                          | BBA             | -     | 470 | -    |         | IF=20mA   |                 |
|        |                          | MG              | -     | 568 | -    |         | IF=40mA   |                 |
| D11/2  | Spectral Line Half-width | MR              | -     | 20  | -    | nm      | IF=20mA   |                 |
|        |                          | BBA             | -     | 21  | -    |         | IF=20mA   |                 |
|        |                          | MG              | -     | 30  | -    |         | IF=40mA   |                 |
| IR     | Reverse Current          | -               | -     | -   | 40   | µA      | VR= 5 V   |                 |

**Absolute Maximum Ratings at TA=25°C**

| parameter               | Value          |     |    | unit |
|-------------------------|----------------|-----|----|------|
|                         | MR             | BBA | MG |      |
| Total Power dissipation | 1200           |     |    | mW   |
| DC Forward Current      | 25             | 25  | 25 | mA   |
| Reverse Voltage         | 5              |     |    | V    |
| Operating temperature   | -40°C To +70°C |     |    |      |
| Storage Temperature     | -40°C To +85°C |     |    |      |

**PACKING & LABEL SPECIFICATIONS**

**K4MR2BBA12MGW88**



|  |           |
|--|-----------|
| P/NO : Kxxx  |           |
| QTY : 1pcs   | CODE: XXX |
| S/N : XX   |           |
| LOT NO:  |           |
| <br>xxxxxxxxxxxxxxxxxxxxxxxx |           |
| RoHS Compliant   |           |