

## Features

- Frequency Range: 0.8~3.5GHz
- Standard Hermetic Package
- Operating Temperature Range: -55°C ~ +85°C

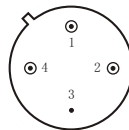
## Specifications (50 Ω, V<sub>CC</sub> = +5V, T<sub>A</sub> = -55°C ~ +85°C)

Parameter	Symbol	Unit	Guaranteed	Typical
Frequency Range	f <sub>L</sub> ~f <sub>H</sub>	GHz	0.8~3.5	0.8~3.5
Gain	G <sub>p</sub>	dB	≥11.0	13.5
Gain Flatness	ΔG <sub>p</sub>	dB	≤±0.75	±0.5
Noise Figure	F <sub>n</sub>	dB	≤4.5 Δ	2.5
Input VSWR	VSWR <sub>i</sub>	--	≤2.0:1 Δ	1.7:1
Output VSWR	VSWR <sub>o</sub>	--	≤2.0:1 Δ	1.8:1
Output Power @ 1dB Compression	P <sub>-1</sub>	dBm	≥10.0 Δ	11.0
DC Current	I <sub>CC</sub>	mA	--	36

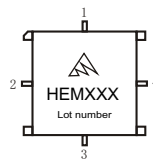
“Δ” T<sub>A</sub> = 24 ± 1°C;

## Maximum Rating

DC Voltage : +7VDC  
RF Input: +10dBm  
Storage Temp: +125°C



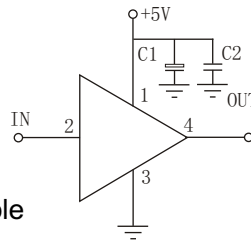
TO-8C



SMA-8C

## Application Notes

1. Typical application shown as right, C<sub>1</sub> = 10~33 μF ; C<sub>2</sub> = 3300~6800pF;
2. See assembly section for mounting information
3. Connectorized package(SMA-1) available
4. ESD observe handling precautions



## Typical Curves

