



## Features

- Frequency Range: 20~1000MHz
- Active Bias Design Supply Temperature Compensation
- Standard Hermetic Package
- Operating Temperature Range: -55°C ~ +85°C

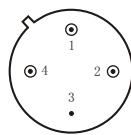
## Specifications (50 Ω, V<sub>CC</sub> = +12V, T<sub>A</sub> = -55°C ~ +85°C)

Parameter	Symbol	Unit	Guaranteed	Typical
Frequency Range	f <sub>L</sub> ~f <sub>H</sub>	MHz	20~1000	20~1000
Gain	G <sub>p</sub>	dB	≥22.0	26.0
Gain Flatness	ΔG <sub>p</sub>	dB	≤2.0	1.0
Noise Figure	F <sub>n</sub>	dB	≤5.0	4.0
Input VSWR	VSWR <sub>i</sub>	—	≤2.0:1	1.7:1
Output VSWR	VSWR <sub>o</sub>	—	≤2.0:1	1.7:1
Output Power @ 1dB Compression	P <sub>-1</sub>	dBm	≥17.0 * Δ	17.0
DC Current	I <sub>CC</sub>	mA	—	82

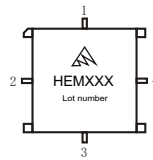
\*f = 700MHz; “Δ” T<sub>A</sub> = 24 ± 1°C;

## Maximum Rating

- DC Voltage : +13VDC
- RF Input: +5dBm
- Storage Temp: +125°C



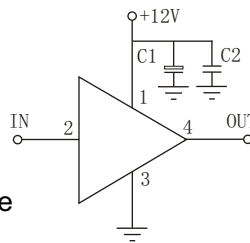
TO-8D



SMO-8D

## Application Notes

1. Typical application shown as right, C<sub>1</sub> = 3.3~22 μF; C<sub>2</sub> = 3300~6800pF;
2. See assembly section for mounting information
3. Connectorized package(SMA-1) available
4. Pay attention to heat dispersion.



## Typical Curves

