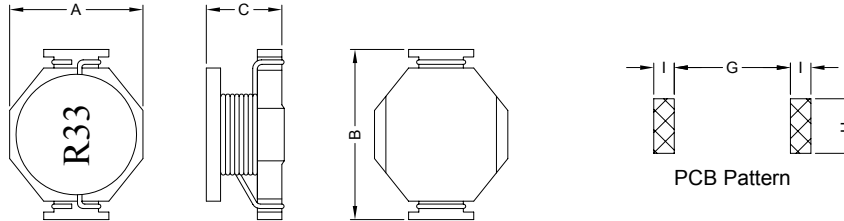


1. PART NO. EXPRESSION :

P D H 3 3 1 6 R 3 3 M Z F
 (a) (b) (c) (d)(e)(f)

- (a) Series code
- (b) Dimension code
- (c) Inductance code : R33 = 0.33uH
- (d) Tolerance code : M = ±20%
- (e) X, Y, Z : Standard part
- (f) F : Lead Free

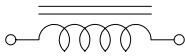
2. CONFIGURATION & DIMENSIONS :



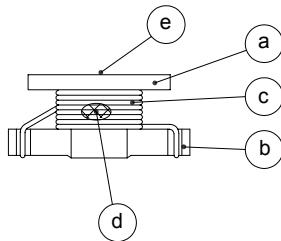
Unit:m/m

A	B	C	G	H	I
9.91 Max.	13.50 Max.	6.35 Max.	8.64 Ref.	4.06 Ref.	1.52 Ref.

3. SCHEMATIC :



4. MATERIALS :



- (a) Core : DR Ferrite Core
- (b) Base : Phenolic
- (c) Wire : Enamelled Copper Wire
- (d) Adhesive : Epoxy
- (e) Ink : Bon Margue

5. GENERAL SPECIFICATION :

- a) Temp. rise : 40°C Typ.
- b) Isat : ΔL/L0A = 10% Typ.
- c) Operating temp. : -40°C to +85°C
- d) Resistance to solder heat : 260°C.10 secs



RoHS Compliant

NOTE : Specifications subject to change without notice. Please check our website for latest information.

05.05.2008



SUPERWORLD ELECTRONICS (S) PTE LTD

6. ELECTRICAL CHARACTERISTICS :

Part No.	Inductance (μ H)	Test Freq. (Hz)	SRF (MHz) Typ.	RDC (m Ω) Max.	Isat (A)	Irms (A)
PDH3316R33MZF	0.33 \pm 20%	0.1V/100K	300	2	20.0	16.0
PDH3316R68MZF	0.68 \pm 20%	0.1V/100K	200	5	13.0	12.0
PDH33161R0MZF	1.00 \pm 20%	0.1V/100K	100	6	11.0	10.0
PDH33161R5MZF	1.50 \pm 20%	0.1V/100K	90	8	9.0	9.0
PDH33162R2MZF	2.20 \pm 20%	0.1V/100K	90	11	7.8	7.4
PDH33162R7MZF	2.70 \pm 20%	0.1V/100K	65	12	7.0	6.6
PDH33163R3MZF	3.30 \pm 20%	0.1V/100K	65	14	6.4	5.9
PDH33164R7MZF	4.70 \pm 20%	0.1V/100K	45	18	5.4	4.8
PDH33165R6MZF	5.60 \pm 20%	0.1V/100K	40	22	5.0	4.6
PDH33166R8MZF	6.80 \pm 20%	0.1V/100K	36	27	4.6	4.4
PDH33168R2MZF	8.20 \pm 20%	0.1V/100K	28	32	4.0	4.0
PDH3316100MZF	10.00 \pm 20%	0.1V/100K	25	38	3.8	3.9



RoHS Compliant

NOTE : Specifications subject to change without notice. Please check our website for latest information.

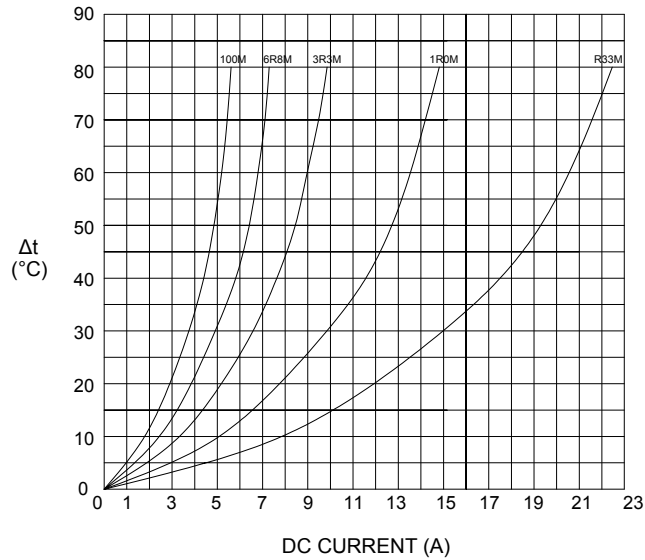
05.05.2008



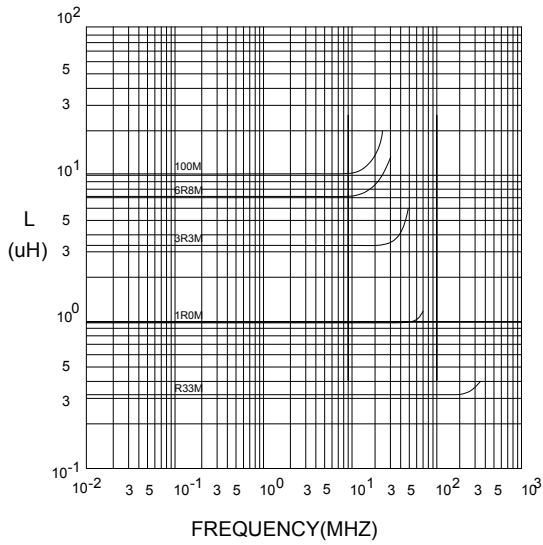
SUPERWORLD ELECTRONICS (S) PTE LTD

7. CHARACTERISTICS CURVES :

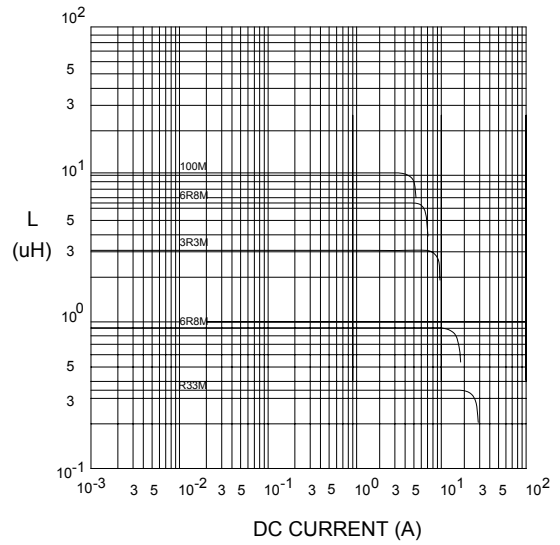
@ TEMP. RISE VS. DC SUPERPOSITION RESPONSE CURVE



@ INDUCTANCE VS. FREQUENCY RESPONSE CURVE



@ INDUCTANCE VS. DC SUPERPOSITION RESPONSE CURVE



NOTE : Specifications subject to change without notice. Please check our website for latest information.



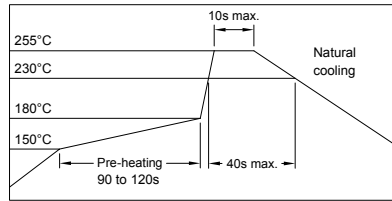
RoHS Compliant

05.05.2008



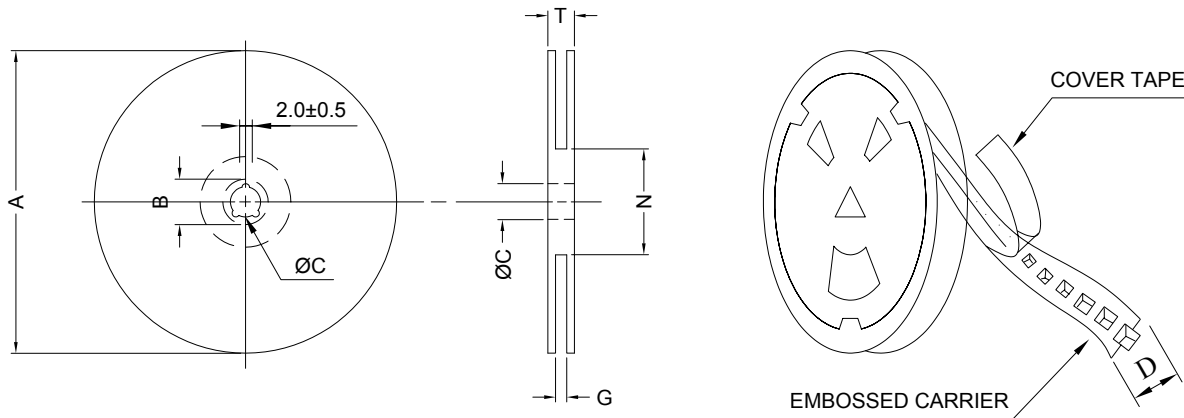
SUPERWORLD ELECTRONICS (S) PTE LTD

RECOMMENDED SOLDERING CONDITIONS REFLOW SOLDERINGS

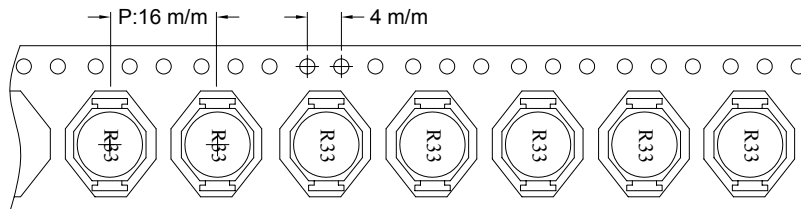


8. PACKAGING INFORMATION :

(1) CONFIGURATION



* CARRIER TAPE WIDTH : D



(2) DIMENSIONS

Unit:m/m

STYLE	A	B	C	D	G	N	T
13-24	330	21±0.8	13±0.5	24	26 ⁺⁰	50 ⁻⁰	30.4

(3) Q'TY & G.W. PER PACKAGE

SERIES	INNER : REEL			OUTER : CARTON		
	Q'TY (PCS)	G.W. (gw)	STYLE	Q'TY (PCS)	G.W. (Kg)	SIZE (cm)
PDH3316	600	1100	13-24	2400	7.9	40 x 40 x 24



RoHS Compliant

NOTE : Specifications subject to change without notice. Please check our website for latest information.

05.05.2008



SUPERWORLD ELECTRONICS (S) PTE LTD

9. RELIABILITY AND TEST CONDITION :

TEST ITEM	SPECIFICATION	TEST CONDITION
SOLDERABILITY	MORE THAN 90% OF THE TERMINAL ELECTRODE SHALL BE COVERED WITH FRESH SOLDER.	PREHEAT : 125±25°C FOR 60 SECONDS SOLDER : 99%Sn/0.3%Ag/0.7%Cu OR EQUIVALENT SOLDER TEMP. : 245±5°C FLUX : ROSIN DIP TIME : 4±1 SECONDS
THERMAL SHOCK TEST (TEMP. CYCLE)	INDUCTANCE SHALL NOT CHANGE MORE THAN ±20%	ROOM TEMP. → -25±2°C 15 MINUTES 30 MINUTES
		ROOM TEMP. → 85±2°C 15 MINUTES 30 MINUTES
		TOTAL : 50 CYCLES
HUMIDITY RESISTANCE TEST		TEMPERATURE : 40±2°C HUMIDITY : 90 ~ 95% APPLIED CURRENT : PER SPEC. TIME : 500 HOURS
HIGH TEMP. RESISTANCE TEST		TEMPERATURE : 85±2°C APPLIED CURRENT : PER SPEC. TIME : 500 HOURS



RoHS Compliant

NOTE : Specifications subject to change without notice. Please check our website for latest information.

05.05.2008



SUPERWORLD ELECTRONICS (S) PTE LTD

10. UL CARD :

OBMW2 **November 30, 2000**
Magnet Wire - Component

PACIFIC ELECTRIC WIRE & CABLE (SHENZHEN) CO LTD **E201757**
607 BAOLONG INDUSTRIAL ESTATE LONGGANG, SHENZHEN
GUANGDONG CHINA

Mtl Dsg	Coating Type		ANSI Type	TI
UEW/U	BC	TC	—	130
PEW/U	Polyurethane	—	—	155°C
PEWH/U	Polyester	—	MW5-C	180
PEW-NY/U	Modified Polyester	—	MW30-C	155
HAI/U	Polyester	Polyamide	MW24-C	200
UEW-NY/U	Polyester(Amide)(Imide)	Polyamideimide	MW35,73	155
	Polyurethane	Polyamide	MW80-C	130
			MW28-C	

Marking: Company name and material designation or marked designation on package or reel, and Recognized Component Mark.

See General Information Preceding These Recognitions

1/3/2001 **Underwriters Laboratories Inc.** **Card 1 of 2**

QMFZ2 **January 15, 1991**
Component-Plastics

SUMITOMO BAKELITE CO LTD **E41429 (M)**
(11-cont. from I card)

PM-9630	BK	0.40	94V-0	150	150	150	—	—	—	—
		0.51	94V-0	150	150	150	0	0	—	—
		3.18	94V-0	150	150	150	0	1	0	4 3
PM-8315	BK	0.50	94V-0	150	150	150	3	0	0	—
PM-8315J	BN	0.71	94V-0	150	150	150	2	0	0	—
		1.47	94V-0	150	150	150	0	2	0	—
		3.05	94V-0	150	150	150	0	1	0	5 4
		6.10	94V-0	150	150	150	0	1	0	5 4
PM-8315K	BK	0.78	94V-1	150	150	150	—	—	—	—
		1.52	94V-0	150	150	150	—	—	—	—
PM-8320J	BK	0.71	94HB	150	150	150	—	—	—	—
PM-8330	BK	0.71	94V-1	150	150	150	—	—	—	—
		1.57	94V-0	150	150	150	—	—	—	—
PM-8400	BK	0.71	94HB	150	150	150	—	—	—	—
PM-9830	BK	0.69	94V-0	150	150	150	0	0	—	—
		3.18	94V-0	150	150	150	0	0	0	4 3

Reports: March 29, 1985: May 14, 1974: September 16, 1971: September 16, 1971:
 September 16, 1971: September 16, 1971: March 29, 1985.

Replaces E4142911 dated February 28, 1990. **(Cont. on J card)**
683540014 N7047 Underwriters Laboratories Inc. ® **D11/0043416**



RoHS Compliant

NOTE : Specifications subject to change without notice. Please check our website for latest information.

05.05.2008



SUPERWORLD ELECTRONICS (S) PTE LTD