

EPC3391G & EPC3391G-LF

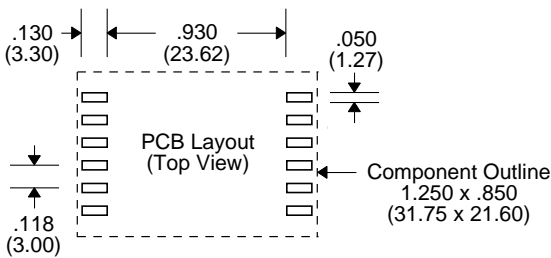
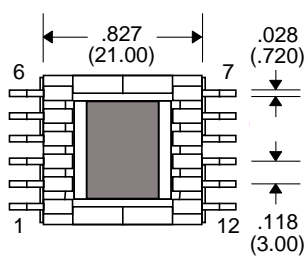
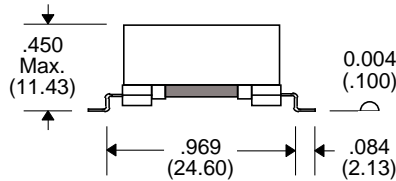
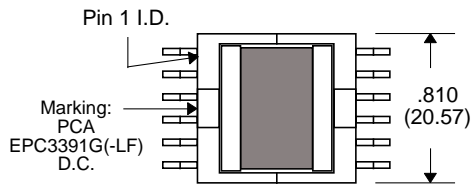


- 45W PoE Applications
- Designed to work with LT1725
- Used in Flyback Topology Converter
- Bobbin : UL94V-0 Recognized Materials
- Storage Temperature : -40°C to +125°C
- Operating Temperature : 0°C to +70°C
- UL 1446 Class B Insulation System
- Duty Cycle : 50% Max.

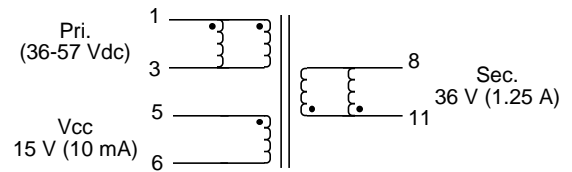
Electrical Parameters @ 25° C

Inductance ($\mu\text{H} \pm 10\%$)	DCR (Typ.)			Turns Ratio		Leakage Inductance ($\mu\text{H} \text{ Max.}$)	Dielectric Rating (Vrms)
@ 100 KHz, 1.0 Vrms						@ 100 KHz, 1.0 Vrms	
42	0.1	0.135	0.06	2.4:1	0.9:1	1.0	1500
Pins 1-3	Pins 1-3	Pins 5-6	Pins 8-11	Pins 1-3:5-6	Pins 1-3:8-11	Pins 1-3 All other wdg's shorted	Wdg's - Wdg's Wdg's - Core

Package



Schematic



Notes :	EPC3391G	EPC3391G-LF
1. Lead Finish	SnPb	Hot Tin Dip (Sn)
2. Peak Solder Rating (for wave solder process Only)	225°C	260°C
3. Weight	11.1 grams	11.1 grams
4. Packaging Information (Tube)	25 pcs / tube	25 pcs / tube

Unless Otherwise Specified Dimensions are in Inches /mm $\pm .010 / .25$