



Part Number	Package	Application	Last Modified
864-RF881.5M-H	1.4 x 2.0 SMD	CDMA	Mar. 10, 2007

TYPE :
 CDMA, Balanced RF-Rx SAW Filter

PART NUMBER :
864-RF881.5M-H

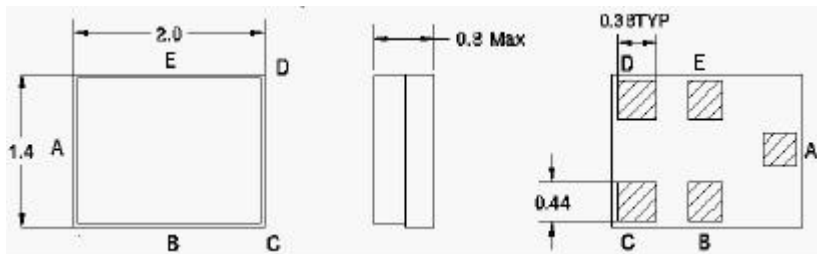


OPERATING CONDITIONS / ELECTRICAL CHARACTERISTICS

PARAMETERS	Condition	Minimum	Typical	Maximum	Units
Center Frequency (Fo)	-	-	881.5	-	MHz
Insertion Loss	869.0~ 894.0 MHz	-	2.3	2.9	dB
Attenuation:	D.C.~ 824.0 MHz	50	64	-	dB
	824.0~849.0 MHz	45	60	-	
	915.0~ 960.0MHz	23	29	-	
	960.0~ 6000.0 MHz	14	18	-	
Output Amplitude Balance (I S31/S21 I)	-	-1.0	0	1.0	dB
Output Phase Balance ($\phi(S31)-\phi(S21)+180^\circ$)	-	-5.0	0	5.0	degree
Source Impedance (single ended)*	-	-	50	-	ohm
Load Impedance (balanced ended)*	-	-	100/56	-	ohm//nH
VSWR within	869.0~ 894.0 MHz	-	1.8	2.3	-
Amplitude Ripple	869.0~ 894.0 MHz	-	0.8	1.5	dBp-p
Maximum DC Voltage	-	-	-	5	V
Maximum Input Power	-	-	-	15	dBm
Operating Temperature	-	-30	-	+80	°C

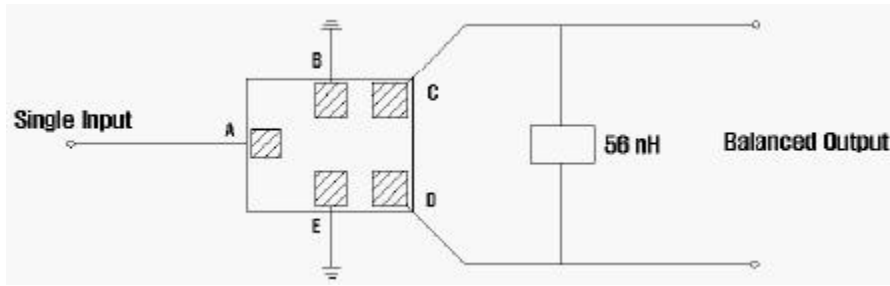
*Matching Network

PACKAGE OUTLINE (mm)

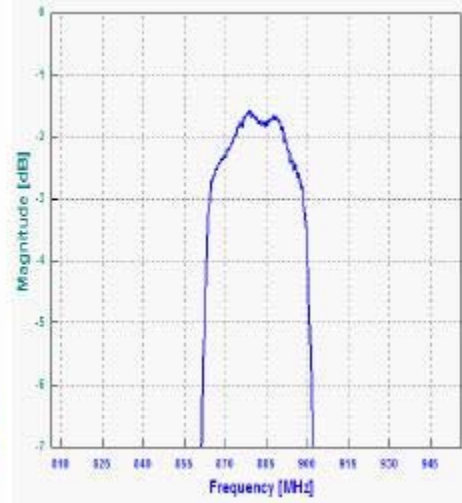
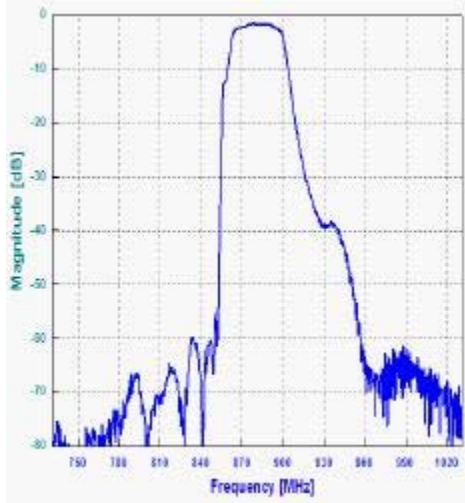


PIN LAYOUT	
A	In
B	Ground
C	Balance Out
D	Balance Out
E	Ground

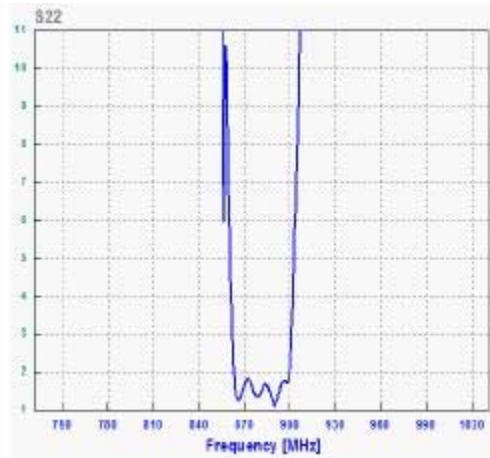
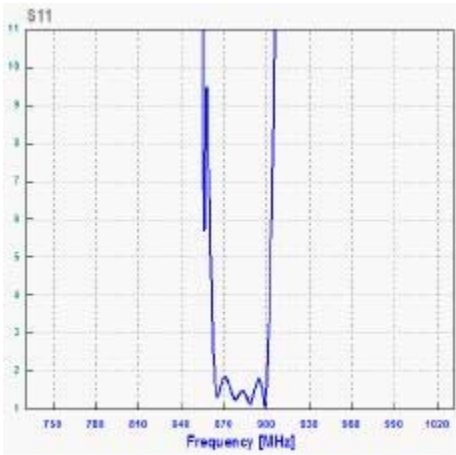
TEST FIXTURE



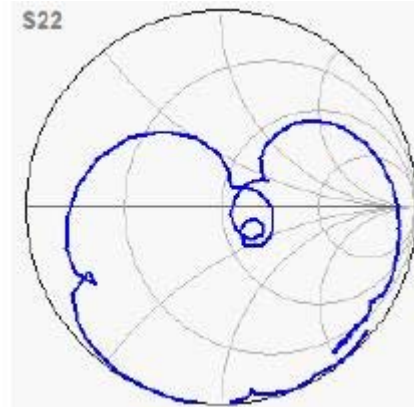
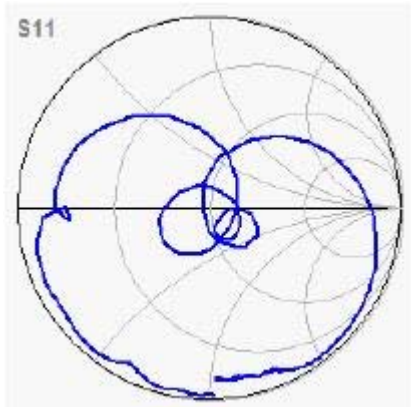
FREQUENCY RESPONSE



VSWR



SMITH CHART



Oscilent Corporation - CALL **949.252.0522**

18195 East McDermott Street , Building D , Irvine , CA 92614 , USA
Fax: 949.252.0599 , E-Mail: Sales@Oscilent.com

Part No.: **864-RF881.5M-H**

[Crystal Oscillators](#) | [Quartz Crystal](#) | [TCXO](#) | [VCXO](#) | [IF SAW Filter](#) | [RF SAW Filter](#) | [Ceramic Resonator](#)
[Crystal Filter](#) | [Ceramic Filter](#) | [SAW Filter / SAW Devices](#) | [Site Map](#)