

P-tec Corp. Tel:(800)688-0613
 2405 Commerce Circle Tel:(719) 589 3122
 Alamosa Co. 81101 Fax:(719) 589 3592
 www.p-tec.net sales@p-tec.net



PL00250 Series SMD LED 1206 Package

Features

- *Round Dome Lens Package 3.2 x 1.6 x 1.8mm
- *AlGaInP Ultra Bright Yellow Chip used
- *Narrow Viewing Angle
- *Low Current Requirements
- *Ultra High Light Output
- *Compatible with IR Solder-Process
- *Industry Standard Footprint
- *1000 pcs per Reel
- *RoHS Compliant

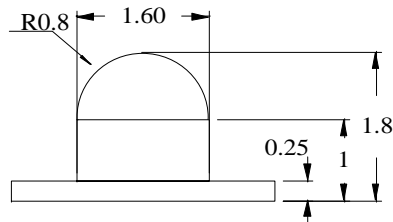
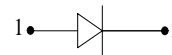
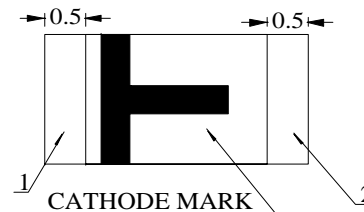
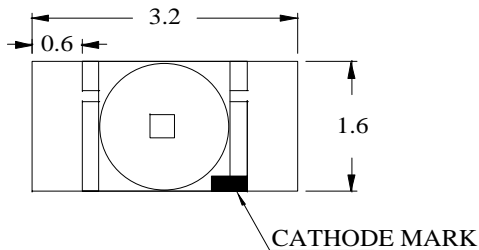
Absolute Maximum Ratings at $T_A = 25^\circ\text{C}$

Power Dissipation	78mW
Reverse Voltage (<100 μA)	5.0V
Max Forward Current	30mA
Peak Forward Current(1/10 Duty Cycle, 0.1ms Pulse Width)	100mA
Operating Temperature Range	-40 $^\circ\text{C}$ to +85 $^\circ\text{C}$
Storage Temperature Range	-40 $^\circ\text{C}$ to +85 $^\circ\text{C}$
Reflow Soldering Temperature.....	260 $^\circ\text{C}$ for 10 seconds

Electrical & Optical Characteristics at $T_A = 25^\circ\text{C}$

Part Number	Emitting Color	Chip Material	Peak Wave Length	Dominant Wave Length	Viewing Angle 2 θ 1/2	Forward Voltage @20mA (V)		Luminous Intensity @20mA (mcd)	
						Typ	Max	Min	Typ
Water Clear Lens			nm	nm	Deg				
PL00250-WCY08	Yellow	AlGaInP	592	590	40 $^\circ$	2.1	2.6	150.0	350.0

Package Dimensions are in **Millimeters**. Tolerance is $\pm 0.25\text{mm}$ unless otherwise specified.



Recommended Soldering Pad Layout

