

Features

- Frequency Range: 1400~1700MHz
- Low Noise: 1.1dB(Typical)
- Standard Hermetic Package
- Operating Temperature Range: -55°C ~ +85°C

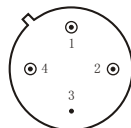
Specifications (50 Ω, V_{CC} = +5V, T_A = -55°C ~ +85°C)

| Parameter | Symbol | Unit | Guaranteed | Typical |
|--------------------------------|--------------------------------|------|------------|---------|
| Frequency Range | f _L ~f _H | MHz | 1400~1700 | — |
| Gain | G _p | dB | ≥23.0 | 28.0 |
| Gain Flatness | ΔG _p | dB | — | ±0.5 |
| Noise Figure | F _n | dB | ≤1.4 Δ | 1.1 |
| Input VSWR | VSWR _i | — | ≤2.0:1 Δ | 1.6:1 |
| Output VSWR | VSWR _o | — | ≤2.0:1 Δ | 1.6:1 |
| Output Power @ 1dB Compression | P ₋₁ | dBm | ≥10.0 * Δ | 12.0 |
| DC Current | I _{CC} | mA | — | 60 |

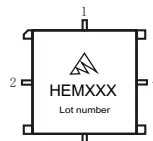
“*”f = 1700MHz; “Δ” T_A = 24 ± 1°C;

Maximum Rating

- DC Voltage : +6VDC
- RF Input: +10dBm
- Storage Temp: +125°C



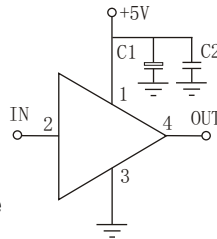
TO-8D



SMD-8D

Application Notes

1. Typical application shown as right, C₁ = 10~33 μF ; C₂ = 3300~6800pF;
2. See assembly section for mounting information
3. Connectorized package(SMA-1) available
4. ESD observe handling precautions



Typical Curves

