



Part Number	Package	Application	Last Modified
800-RF2642.5M-B	1.6 x 2.0 SMD	DMB	Mar. 2, 2007

TYPE :
DMB, RF SAW Filter

PART NUMBER :
800-RF2642.5M-B

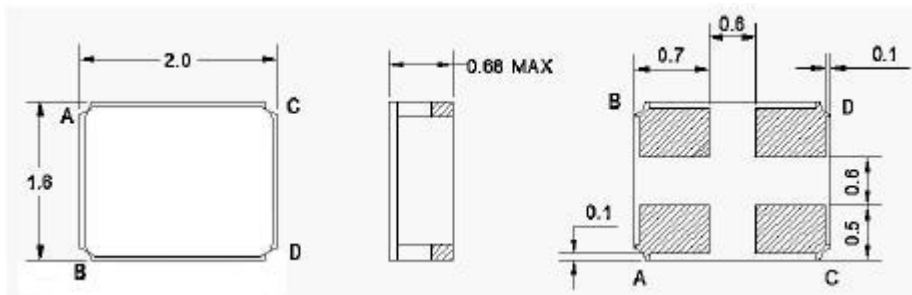


OPERATING CONDITIONS / ELECTRICAL CHARACTERISTICS

PARAMETERS	Condition	Minimum	Typical	Maximum	Units
Center Frequency (Fo)	-	-	2642.5	-	MHz
Insertion Loss	2630.0~ 2655.0 MHz	-	2.0	2.5	dB
Attenuation:	DC~ 2400.0 MHz	18	20	-	dB
	2400.0~ 2500.0 MHz	28	30	-	
	2750.0~ 3500.0MHz	25	28	-	
	3500.0~ 6000.0 MHz	30	32	-	
Source Impedance (single ended)*	-	-	50	-	ohm
Load Impedance (single ended)*	-	-	50	-	ohm
VSWR	2630.0~ 2655.0 MHz	-	1.3	2.0	-
Amplitude Ripple	2630.0~ 2655.0 MHz	-	0.2	1.0	dBp-p
Maximum DC Voltage	-	-	-	0.2	V
Maximum Input Power	-	-	-	0	dBm
Operating Temperature	-	-30	-	+80	°C

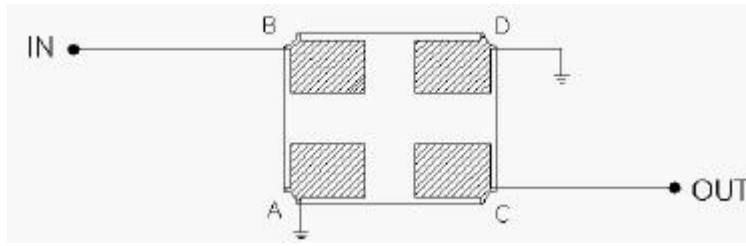
* No Matching Network(Ref. Testing Enviroment Circuit as shown below)

PACKAGE OUTLINE (mm)



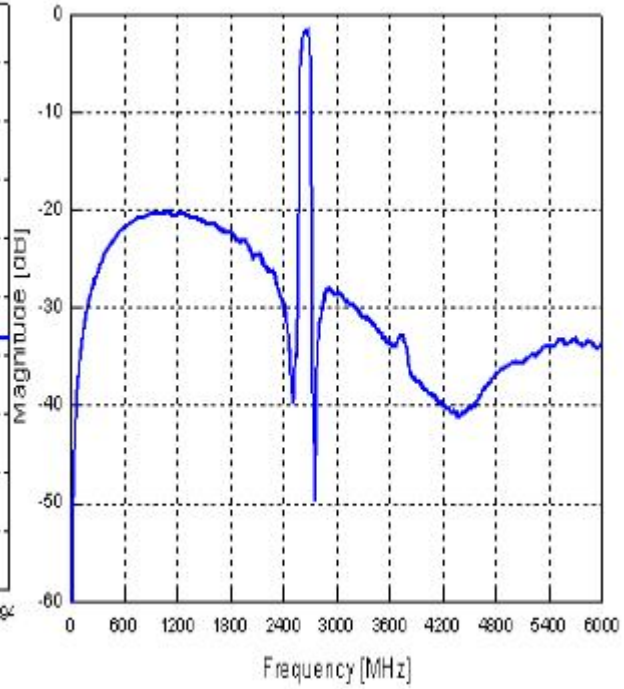
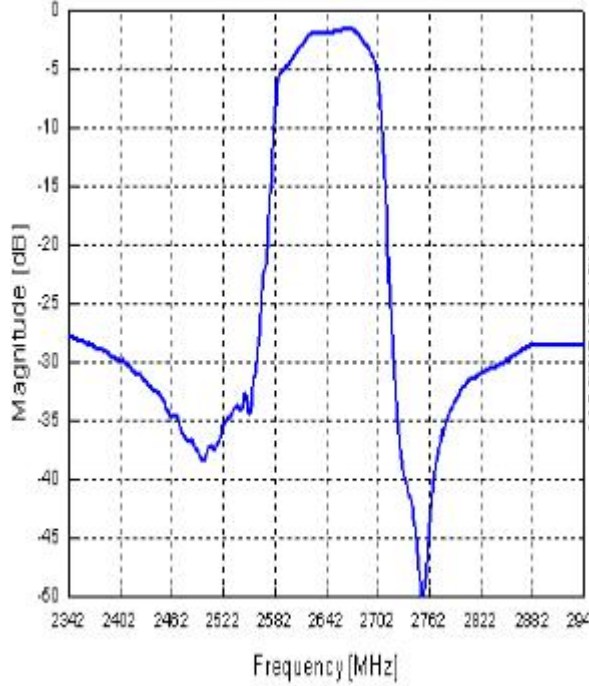
PIN LAYOUT	
A	Ground
B	In
C	Out
D	Ground

TEST FIXTURE

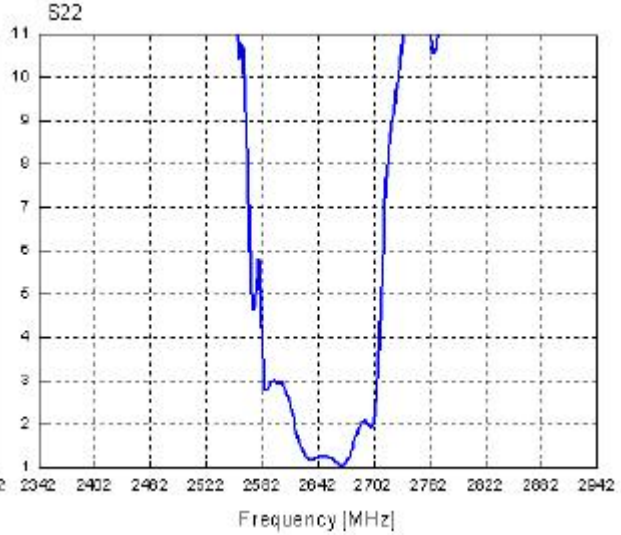
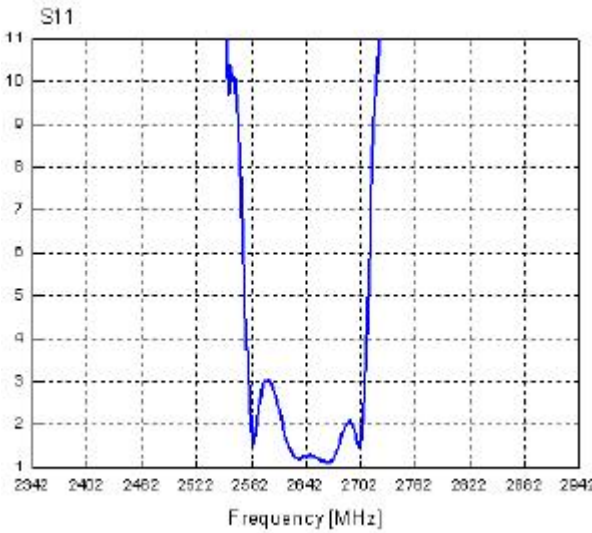


Load/ Source Impedance = 50 ohms

FREQUENCY RESPONSE



VSWR



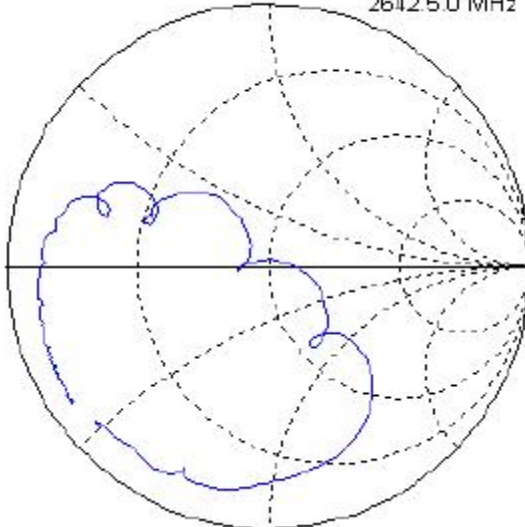
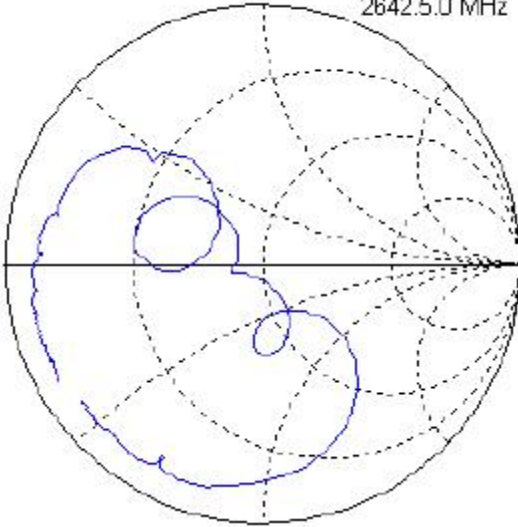
SMITH CHART

S11

39.2851-j 1.5068
2642.50 MHz

S22

40.145 -j 0.88634
2642.50 MHz



Oscilent Corporation - CALL **949.252.0522**

18195 East McDermott Street , Building D , Irvine , CA 92614 , USA
Fax: 949.252.0599 , E-Mail: Sales@Oscilent.com

Part No.: 800-RF2642.5M-B