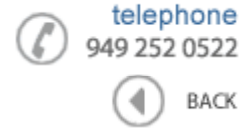




**Data Sheet**



Product Category: RF SAW Filter

Part Number	Package	Application	Last Modified
800-RF2642.5M-A	1.6 x 2.0 SMD	DMB	Mar. 14, 2007

TYPE :  
DMB, RF SAW Filter

PART NUMBER :  
**800-RF2642.5M-A**

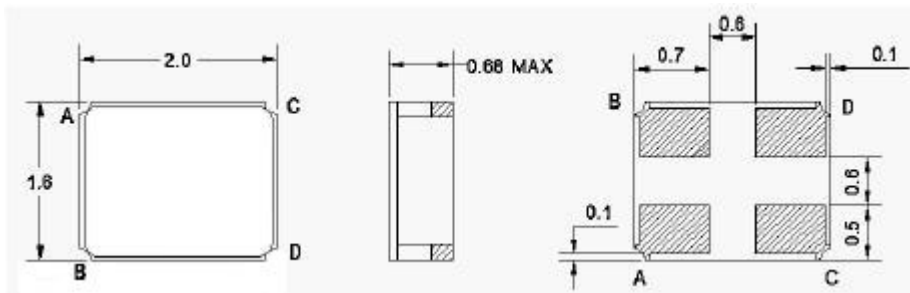


**OPERATING CONDITIONS / ELECTRICAL CHARACTERISTICS**

PARAMETERS	Condition	Minimum	Typical	Maximum	Units
Center Frequency (Fo)	-	-	2642.5	-	MHz
Maximum Insertion Loss	2630.0~ 2655.0 MHz	-	2.6	3.2	dB
Attenuation:	DC~ 2400.0 MHz	20	23	-	dB
	2400.0~ 2500.0 MHz	35	40	-	
	2750.0~ 3500.0MHz	35	39	-	
	3500.0~ 6000.0 MHz	15	20	-	
Source Impedance (single ended)*	-	-	50	-	ohm
Load Impedance (single ended)*	-	-	50	-	ohm
VSWR	2630.0~ 2655.0 MHz	-	2.1	2.5	-
Amplitude Ripple	2630.0~ 2655.0 MHz	-	0.5	1.5	dBp-p
Maximum DC Voltage	-	-	-	0.2	V
Maximum Input Power	-	-	-	0	dBm
Operating Temperature	-	-30	-	+80	°C

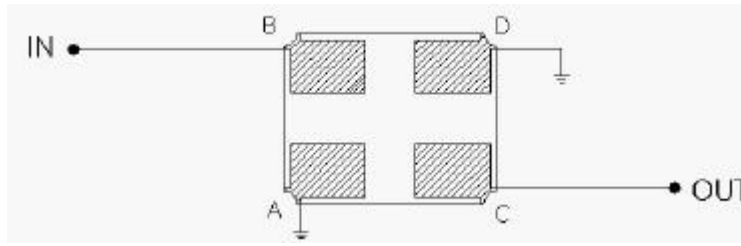
\* No Matching Network(Ref. Testing Enviroment Circuit as shown below)

**PACKAGE OUTLINE (mm)**



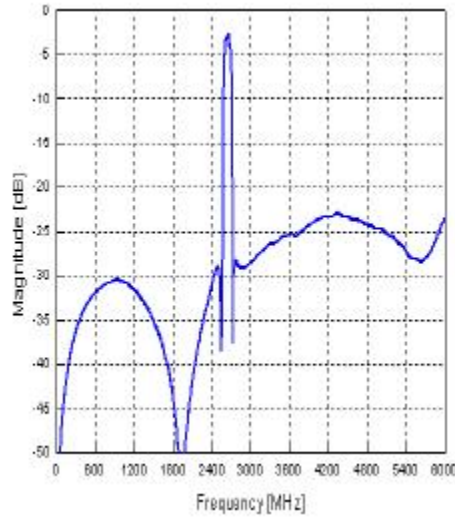
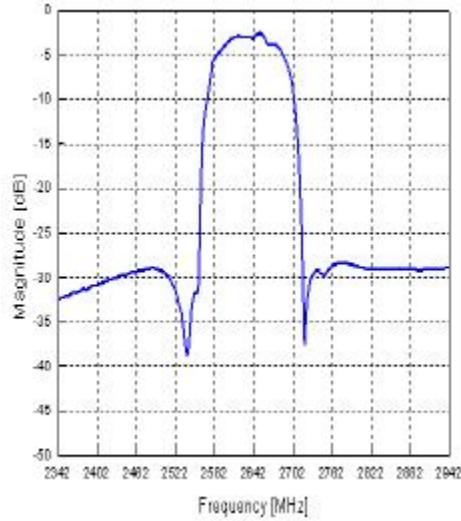
PIN LAYOUT	
A	Ground
B	In
C	Out
D	Ground

**TEST FIXTURE**

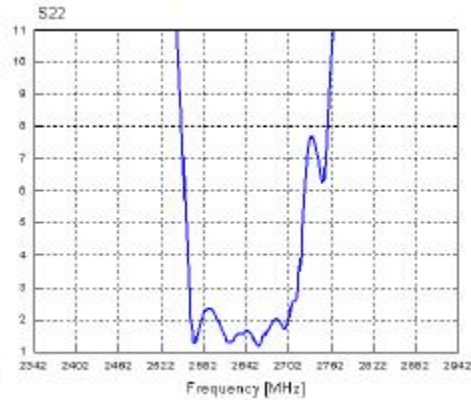
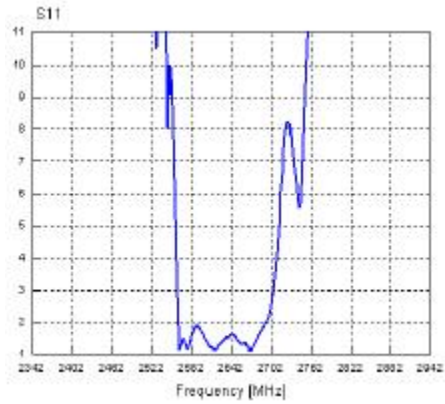


Load/ Source Impedance = 50 ohms

**FREQUENCY RESPONSE**



**VSWR**



**SMITH CHART**



Part No.: 800-RF2642.5M-A

**Oscilent Corporation** - CALL **949.252.0522**

18195 East McDermott Street , Building D , Irvine , CA 92614 , USA  
Fax: 949.252.0599 , E-Mail: [Sales@Oscilent.com](mailto:Sales@Oscilent.com)

---

[Crystal Oscillators](#) | [Quartz Crystal](#) | [TCXO](#) | [VCXO](#) | [IF SAW Filter](#) | [RF SAW Filter](#) | [Ceramic Resonator](#)  
[Crystal Filter](#) | [Ceramic Filter](#) | [SAW Filter / SAW Devices](#) | [Site Map](#)