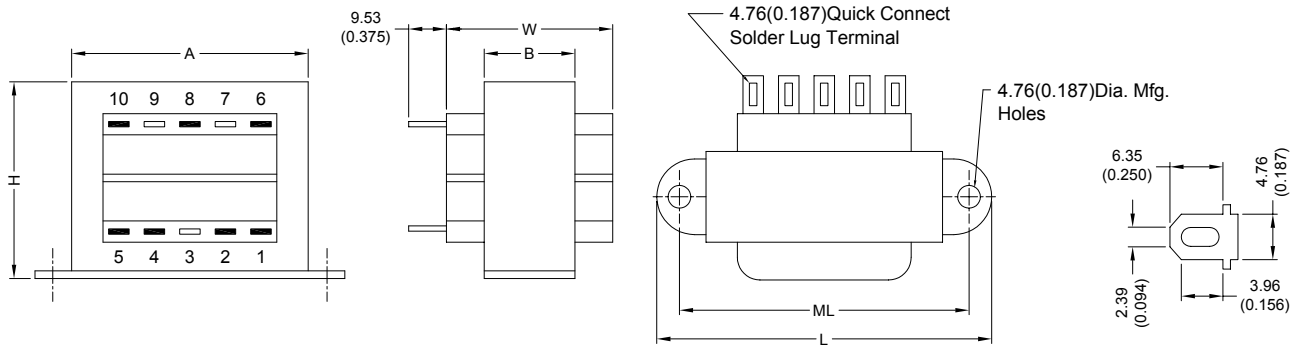


# POWER TRANSFORMER

## DCS7-16 (F) SERIES

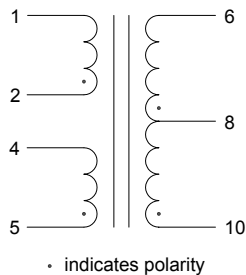
### 1. CONFIGURATION & DIMENSIONS :



UNIT : mm (inch)

SIZE	VA	L	W	H	A	B	ML	gram
7	56	93.68 (3.688)	46.05 (1.813)	57.15 (2.250)	68.28 (2.688)	27.00 (1.063)	79.38 (3.125)	771.11

### 2. SCHEMATIC :



### 3. ELECTRICAL CHARACTERISTICS (@ 25°C) :

- |                                      |                              |
|--------------------------------------|------------------------------|
| a. Primary Voltage                   | AC 115/230 V 50/60 Hz .      |
| b. No Load Primary Current           | Less Than 80mA / 105mA .     |
| c. Secondary Voltage (±5%)           |                              |
| Pin 6-10 C.T. Pin 8                  | AC 18.50 V / 18.50 V .       |
| d. Secondary Load Current            | 3.50A .                      |
| e. Full Load Primary Current         | Less Than 620mA / 330mA .    |
| f. Full Load Secondary Voltage (±5%) | 16.00V / 16.00V .            |
| Pin 6-10 C.T. Pin 8                  |                              |
| g. DC Resistance                     |                              |
| Pin 1-2                              | Primary-1 = 18.00 Ohm .      |
| Pin 4-5                              | Primary-2 = 21.80 Ohm .      |
| Pin 6-8                              | Secondary-1 = 0.130 Ohm .    |
| Pin 8-10                             | Secondary-2 = 0.145 Ohm .    |
| h. Insulation Resistance             | DC 500V 100Meg Ohm Of More . |
| i. Withstand Voltage (Hi-Pot)        | AC 2500V 60Hz 1 Minutes .    |
| j. Temperature Rise                  | Less Than 60 Deg C .         |
| k. Core Size                         | EI-66 x 26.00 m/m .          |

#### l. Turns & Wire Gauge

Primary-1	Pin 1-2	385	Turns Diameter = 0.20 mm
Primary-2	Pin 4-5	385	Turns Diameter = 0.20 mm
Secondary	Pin 6-8-10	9-47-94	Turns Diameter = 1.00 mm



**RoHS Compliant**

NOTE : Specifications subject to change without notice. Please check our website for latest information.

25.02.2008



**SUPERWORLD ELECTRONICS (S) PTE LTD**

PG. 1