

	1	2	3	4
1		0°	- 90°	Isol
2	0°		Isol	- 90°
3	- 90°	Isol		0°
4	Isol	- 90°	0°	

PRINCIPAL SPECIFICATIONS

Model Number	Center Frequency, f ₀ , MHz	Frequency Performance, MHz	Insertion Loss, dB, Max.	Isolation, dB, Min.	Amplitude Balance, dB, Max.	Phase Tolerance, Max.	VSWR, (In/Out) Max.
QHG-2B-***B	1 - 500	± 5% f ₀	0.3	23	0.75	90° ± 3°	1.3:1
QHG-2B-***B	500 - 1000	± 5% f ₀	0.3	23	0.75	90° ± 3°	1.3:1

For complete model number replace *** with desired center frequency

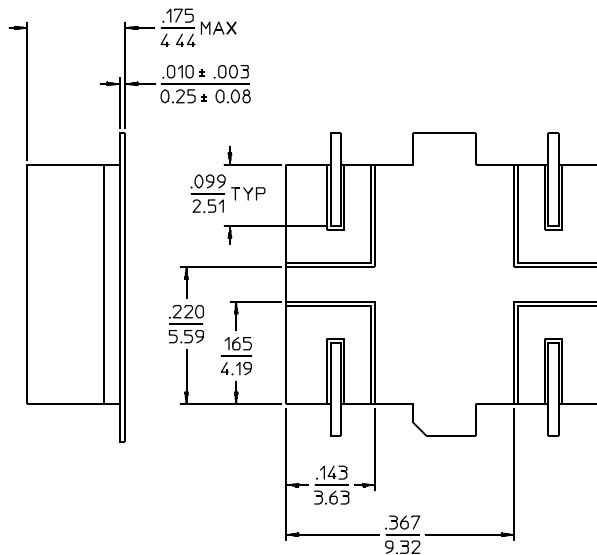
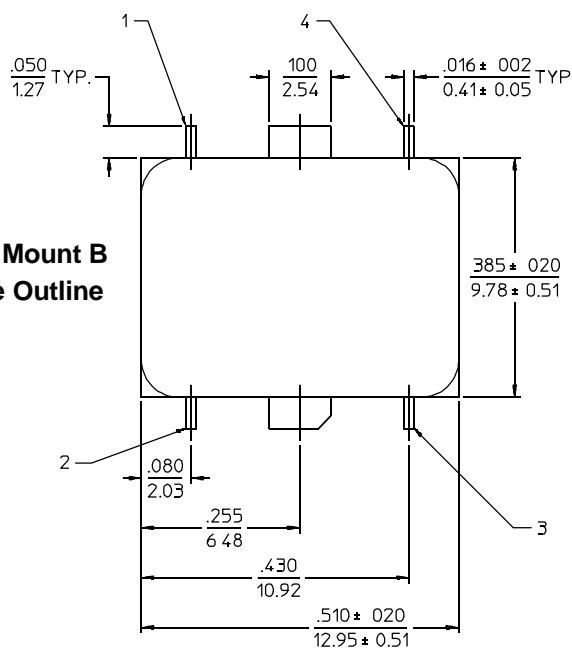
General Notes:

1. The QHG-2B series includes narrowband devices covering 1 to 1,000 MHz using a special lumped element design to minimize size and cost. The low profile, surface-mount package which houses these 3 dB Quadrature Hybrids is suited for terrestrial and aerospace applications alike where hermeticity and inherent package reliability are essential.

GENERAL SPECIFICATIONS

Coupling: - 3 dB nom.
 Impedance: 50 Ω nom.
 CW Input: 4 W max. (1.2:1 VSWRout)
 (@ 25°C; derated to 1 W @ 85°C)
 Weight, nominal: 0.1 oz (2.8 g)
 Operating Temp: - 55° to +85°C

Surface Mount B Package Outline



Notes: 1. Tolerance on 3 place decimals ±0.10(.25) except as noted.
 2. Dimensions in inches over millimeters.
 3. Lead dimensions apply only at body.

20Feb96