

AC-DC SERIES: P238

Third generation of planar transformers

Features

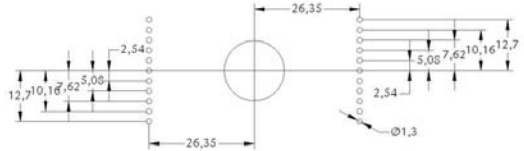
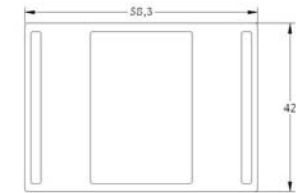
- High power planar transformer for AC/DC SMPS.
- According UL1950 / EN60950.
- UL 94V0 material.
- Storage temperature from -20°C to 130°C.
- Operating temperature -20°C to 85°C.
- Power up to 400W.



Electrical specifications

Part Number	Input Voltage Vdc (V)	Output Voltage (V)	Output Current (A)	Power (W)	Frequency (kHz)	Duty cycle	Topology	Inductance (mH±25%)	Typ Leakage Inductance (µH)	Turns Ratio (Pri:Sec)	Max Total losses (W)
P238WD4DP1	350-420	12	30	400	125	0,44	Forward dual	9,72	1,9	12:1	4
P238WD4DP2	350-420	48	8	400	125	0,42	Forward dual	9,72	1,9	3:1	4
P238PP4DP1	350-420	24	16	400	125	0,42	Push - Pull	9,72	1,9	12:1	4

Dimensions



Recommended PCB layout

Schematics

