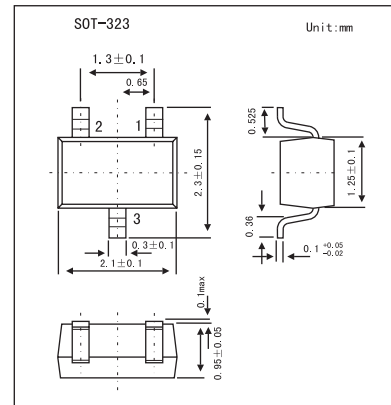


# Schottky barrier diode

## RB461F

### ■ Features

- Small surface mounting type. (UMD3)
- Ultra low  $V_F$ . ( $V_F=0.45V$  Typ. at 0.7A)
- $I_F=0.7A$  guaranteed despite the size.



### ■ Absolute Maximum Ratings $T_a = 25^\circ C$

Parameter	Symbol	Limits	Unit
Peak reverse voltage	$V_{RM}$	25	V
DC reverse voltage	$V_R$	20	V
DC forward current	$I_F$	0.7	A
Peak forward surge current *	$I_{FSM}$	3	A
Junction temperature	$T_j$	125	$^\circ C$
Storage temperature	$T_{stg}$	-40 to +125	$^\circ C$

\* 60Hz for 1  $\infty$

### ■ Electrical Characteristics $T_a = 25^\circ C$

Parameter	Symbol	Conditions	Min	Typ	Max	Unit
Forward voltage	$V_F$	$I_F = 700\text{ mA}$			0.49	V
Reverse current	$I_R$	$V_R=20\text{ V}$			200	$\mu A$

### ■ Marking

Marking	3B
---------	----