

Wideband RF Choke

50 to 8200 MHz

Maximum Ratings

Operating Temperature	-45°C to 85°C
Storage Temperature	-55°C to 100°C
DC Current	200 mA

Pin Connections

IN	1
OUT	3
ISOLATED	2,4

Features

- very broadband
- miniature size, 0.15"x0.15"
- low parasitic capacitance 0.1 pf typ.
- effective parallel resistance, Rch 500 ohm typ.
- useable up to 10 GHz
- patent pending

Applications

- biasing amplifiers
- biasing of laser diodes
- biasing of active antennas

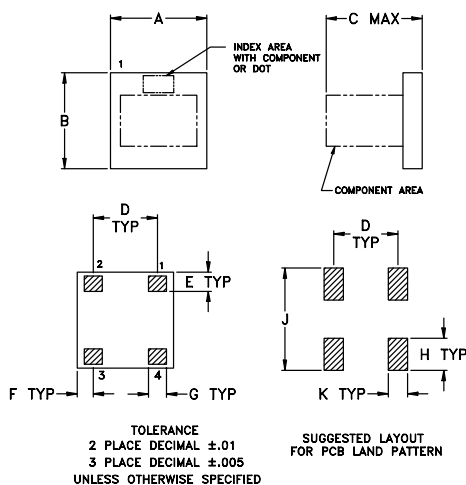
NEW!
TCCH-80



BLUE CELL™

CASE STYLE: GU1041
PRICE: \$3.45 ea. QTY (10-49)

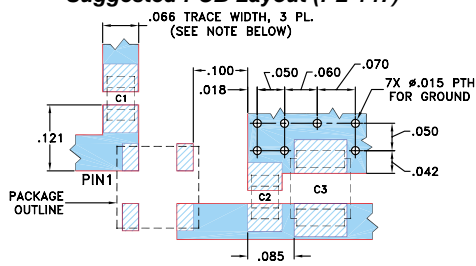
Outline Drawing



Outline Dimensions (inch/mm)

A	B	C	D	E	F	G
.150	.150	.100	.030	.025	.028	
3.81	3.81	3.81	2.54	0.76	0.64	0.71
H	J	K	wt.			
.050	.160	.030	grams			
1.27	4.06	0.76	.10			

Demo Board MCL P/N: TB-272 Suggested PCB Layout (PL-147)



CAPACITORS C1,C2: 39000 pF, EIA CODE (MM): 2012
CAPACITORS C3: TANT, 1 uF, EIA CODE (MM): 3528

- NOTES: 1. TRACE WIDTH IS SHOWN FOR ROGERS R04350 WITH DIELECTRIC THICKNESS .030" ± .002". COPPER: 1/2 OZ. EACH SIDE. FOR OTHER MATERIALS TRACE WIDTH MAY NEED TO BE MODIFIED.
2. BOTTOM SIDE OF THE PCB IS CONTINUOUS GROUND PLANE.

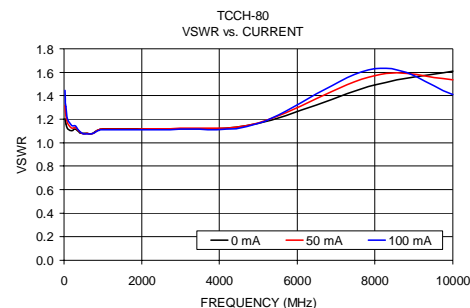
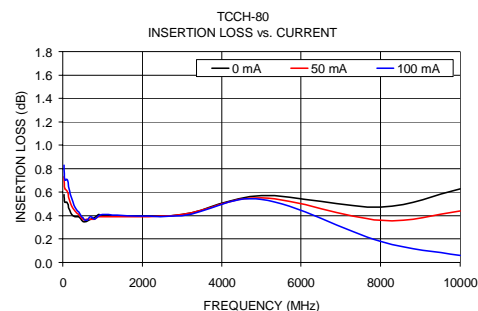
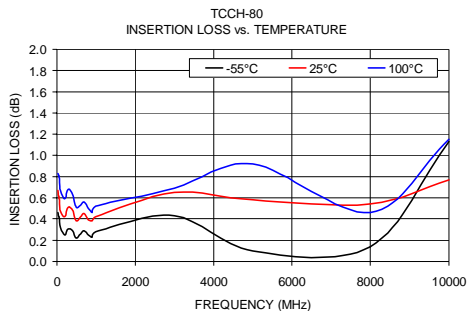
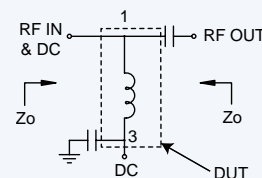
- DENOTES PCB COPPER LAYOUT
■ DENOTES COPPER LAND PATTERN FREE OF SOLDER MASK

Electrical Specifications @ 25°C

MODEL NO.	FREQUENCY (MHz)	INSERTION LOSS* (dB)		VSWR* (:1)		DC CURRENT (mA) Max.	INDUCTANCE (µH) Typ.		
		Typ.	Max.	Typ.	Max.		@ 0 mA	50 mA	@ 100 mA
TCCH-80	50-8200	0.5	1.1	1.1	1.7	100	4	1.3	0.9

*tested with circuit shown below, Zo=50 ohms

TEST CIRCUIT*



Mini-Circuits®

INTERNET <http://www.minicircuits.com>

P.O. Box 350166, Brooklyn, New York 11235-0003 (718) 934-4500 Fax (718) 332-4661

Distribution Centers NORTH AMERICA 800-654-7949 • 417-335-5935 • Fax 417-335-5945 • EUROPE 44-1252-832600 • Fax 44-1252-837010

Mini-Circuits ISO 9001 & ISO 14001 Certified

REV. OR
M90433
TCCH-80
ED-11032/4
DJ/TD/CP
041119