



# SOLID STATE DEVICES, INC.

14830 Valley View Blvd \* La Mirada, Ca 90638  
Phone: (562) 404-7855 \* Fax: (562) 404-1773

**SDA403A  
through  
SDA403G**

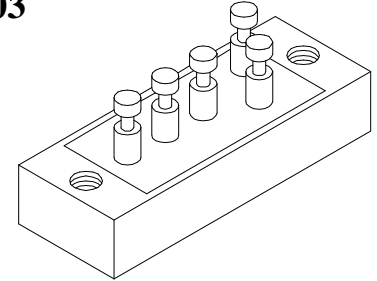
## Designer's Data Sheet

**6 AMPS  
STANDARD RECOVERY  
THREE PHASE BRIDGE  
RECTIFIER ASSEMBLY**

### FEATURES:

- Up to 1000 V Blocking Voltage
- Average Output Current 6 Amps
- Low Reverse Leakage Current
- Constructed with Void-free, Hermetically Sealed Discretes
- Aluminum Case for Maximum Thermal Conductivity
- Electrically Insulated Aluminum Case
- TX and TXV Level Screening Available
- Fast and Ultra Fast Recovery Versions Available. Consult Factory.

**SDA403**



Maximum Ratings		SYMBOL	VALUE	UNITS
Peak Repetitive Reverse and DC Blocking Voltage	SDA403A	V <sub>RRM</sub> V <sub>VRM</sub> V <sub>R</sub>	50	Volts
	SDA403B		100	
	SDA403C		200	
	SDA403D		400	
	SDA403E		600	
	SDA403F		800	
	SDA403G		1000	
	Average Rectified Forward Current (Resistive load, 60Hz, Sine Wave, T <sub>C</sub> = 55°C)			
Peak Surge Current (8.3 ms Pulse, Half Sine Wave, T <sub>A</sub> = 25°C)		I <sub>FSM</sub>	30	Amps
Operating and Storage Temperature		T <sub>OP</sub> & T <sub>stg</sub>	-55 TO +150	°C
Maximum Junction Temperature		T <sub>J</sub>	175	
Maximum Thermal Resistance Junction to Case		q <sub>JC</sub>	8.5	°C/W

**NOTE:** All specifications are subject to change without notification. SCD's for these devices should be reviewed by SSDI prior to release.

**DATA SHEET # : RA0005B**

# SDA403A through SDA403G



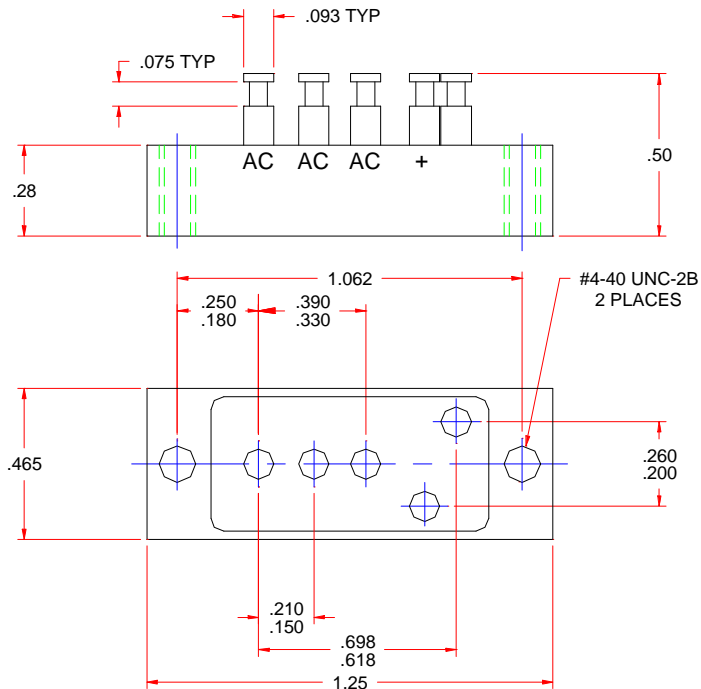
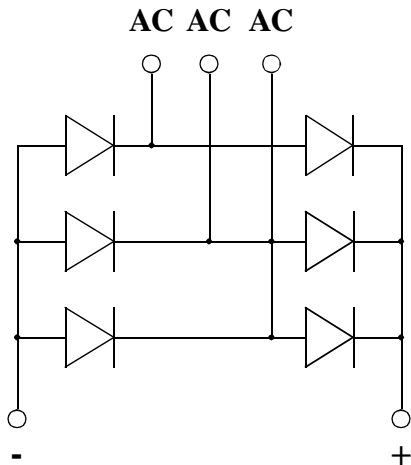
**SOLID STATE DEVICES, INC.**

14830 Valley View Blvd \* La Mirada, Ca 90638  
Phone: (562) 404-7855 \* Fax: (562) 404-1773

Electrical Characteristics <sup>1/</sup> (per leg)	SYMBOL	VALUE	UNITS
<b>Instantaneous Forward Voltage Drop</b> ( $I_F = 3A, 300 - 500\mu\text{sec pulse}$ )	$V_{F1}$	1.2	Vdc
<b>Reverse Leakage Current</b> (Rated $V_R, 300\mu\text{s pulse minimum}$ )	$I_{R1}$	3	mA
<b>Reverse Leakage Current</b> (Rated $V_R, T_A = 100^\circ\text{C}, 300\mu\text{s pulse minimum}$ )	$I_{R2}$	100	mA
<b>Reverse Recovery Time</b> ( $I_F = 0.5A, I_R = 1.0A, I_{RR} = 0.25A$ )	$t_{RR}$	5	msec

<sup>1/</sup>  $T_A = 25^\circ\text{C}$ , Unless otherwise specified

## CASE OUTLINE: SDA403



**Tolerances: (Unless otherwise specified)**

**.xx: ± .03**  
**.xxx: ± .010**

## TEMPERATURE DERATING CURVE

