

# Monolithic crystal filter

## MQF21.4-3000/37

(preliminary specification)



### Application

- 6 pol filter
- i.f.- filter
- use in mobile and stationary transceivers

Limiting values		Unit	Value
Nominal frequency	$f_0$	MHz	21.4
Centre frequency	$f_c$	MHz	$21.4 \pm 1300$ Hz
Insertion loss		dB	$\leq 4.0$
Pass band at 6.0 dB		kHz	$\pm 15.00$
Ripple in pass band	$f_c \pm 15.00$ kHz	dB	Gaussian
Stop band attenuation	$f_c \pm 56$ kHz	dB	$\geq 60$
Alternate attenuation	$f_0 \pm 1.2...5$ MHz	dB	$> 90$ except spurious
Group delay distortion	$f_c \pm 15$ kHz	$\mu$ s	$< 5$
IP3		dBm	$> 30$

Terminating impedance Z

R1 || C1

Ohm/pF 50 || 0

R2 || C2

Ohm/pF 50 || 0

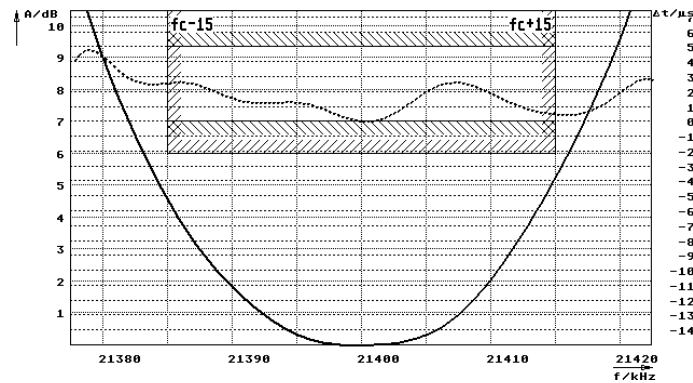
Operating temp. range

° C

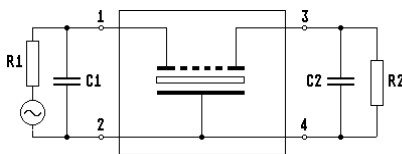
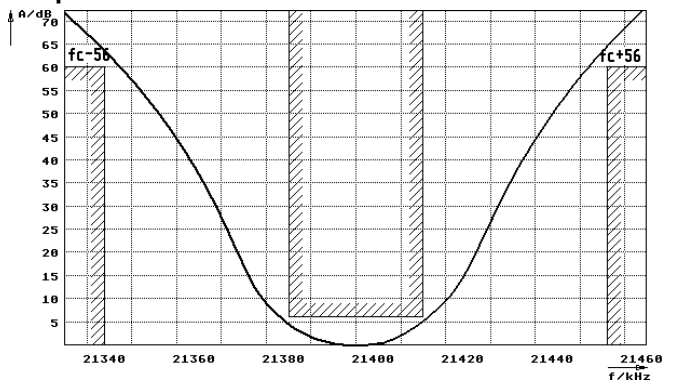
-10... +70

### Characteristics MQF21.4-3000/37

#### Pass band

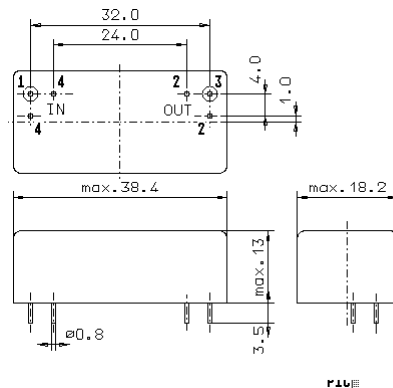


#### Stop band



Pin connections:

- 1 Input
- 2 Ground-Input
- 3 Output
- 4 Ground-Output



GM17.1