

Monolithic crystal filter

MQF21.4-2000/01



Application

- 2 pol filter
- i.f.- filter
- use in mobile and stationary transceivers

Limiting values

		Unit	Value
Center frequency	f_0	MHz	21.4
Insertion loss		dB	≤ 1.5
Pass band at 3.0 dB		kHz	± 10.00
Ripple in pass band	$f_0 \pm 6.00$ kHz	dB	≤ 0.5
Stop band attenuation	$f_0 \pm 30$ kHz	dB	≥ 15
Alternate attenuation	$f_0 - 200..1000$ kHz	dB	> 45
	$f_0 + 350..1000$ kHz	dB	> 35

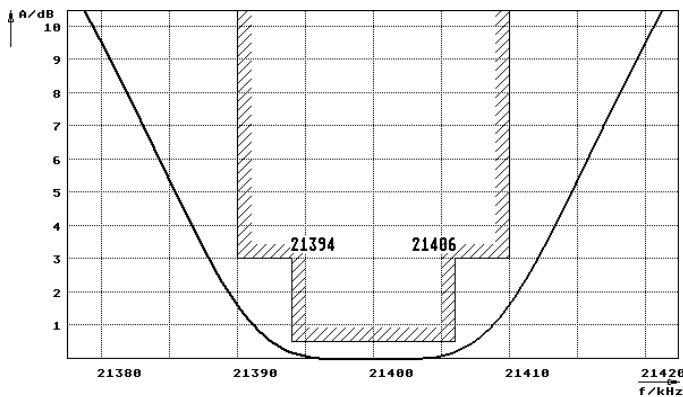
Terminating impedance Z

R1 C1	Ohm/pF	1800 1
R2 C2	Ohm/pF	1800 1

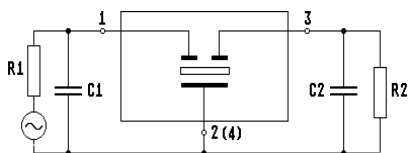
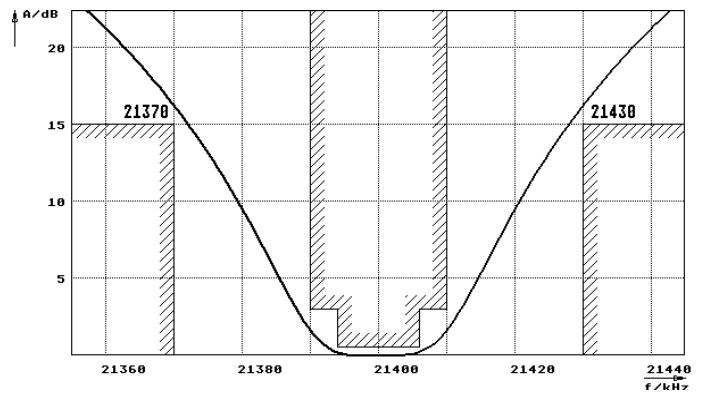
Operating temp. range	$^{\circ}$ C	-20... +70
-----------------------	--------------	------------

Characteristics MQF21.4-2000/01

Pass band



Stop band



Pin connections: 1 Input
2 Input-E
3 Output
4 Output-E

