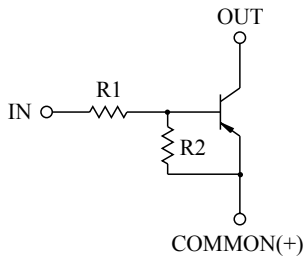


SWITCHING APPLICATION.
INTERFACE CIRCUIT AND DRIVER CIRCUIT APPLICATION.

FEATURES

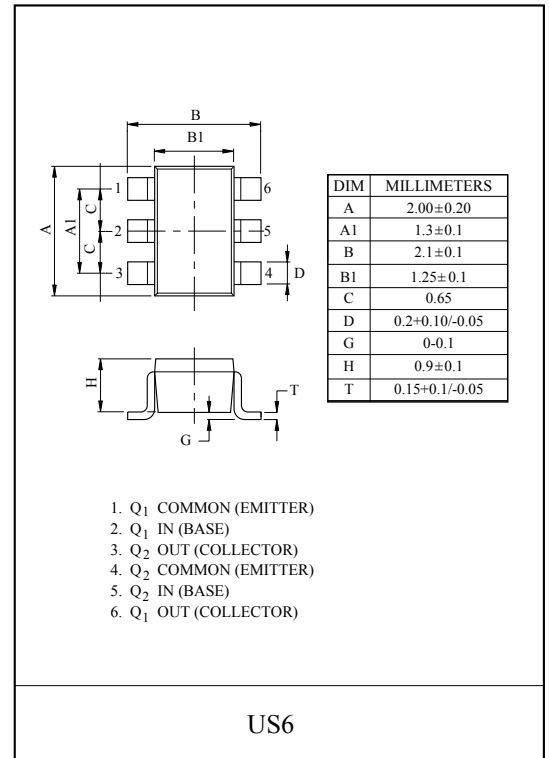
- With Built-in Bias Resistors
- Simplify Circuit Design
- Reduce a Quantity of Parts and Manufacturing Process
- High Packing Density.

EQUIVALENT CIRCUIT

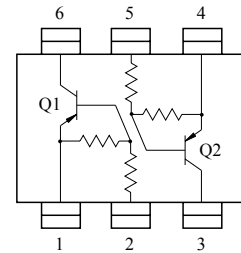


BIAS RESISTOR VALUES

TYPE NO.	R1(k Ω)	R2(k Ω)
KRA757U	10	47
KRA758U	22	47
KRA759U	47	22



EQUIVALENT CIRCUIT (TOP VIEW)



MAXIMUM RATING (Ta=25°C)

CHARACTERISTIC		SYMBOL	RATING	UNIT
Output Voltage	KRA757U~759U	V _O	-50	V
Input Voltage	KRA757U	V _I	-30, 6	V
	KRA758U		-40, 7	
	KRA759U		-40, 15	
Output Current	KRA757U~759U	I _O	-100	mA
Power Dissipation		P _D *	200	mW
Junction Temperature		T _j	150	°C
Storage Temperature Range		T _{stg}	-55~150	°C

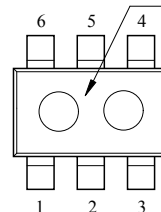
* Total Rating.

MARK SPEC

TYPE	KRA757U	KRA758U	KRA759U
MARK	PH	PI	PJ

Marking

Type Name



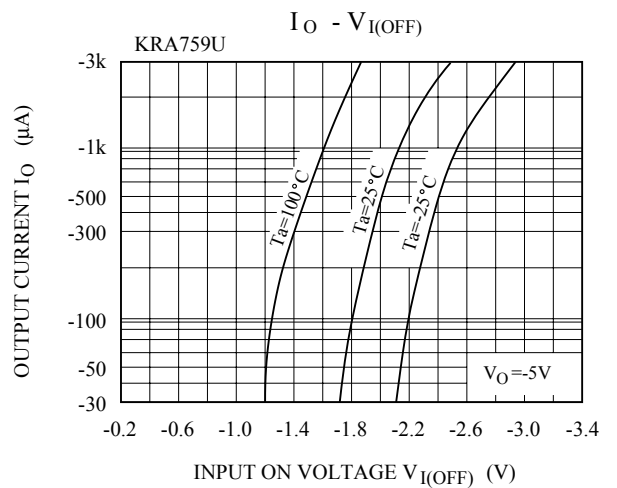
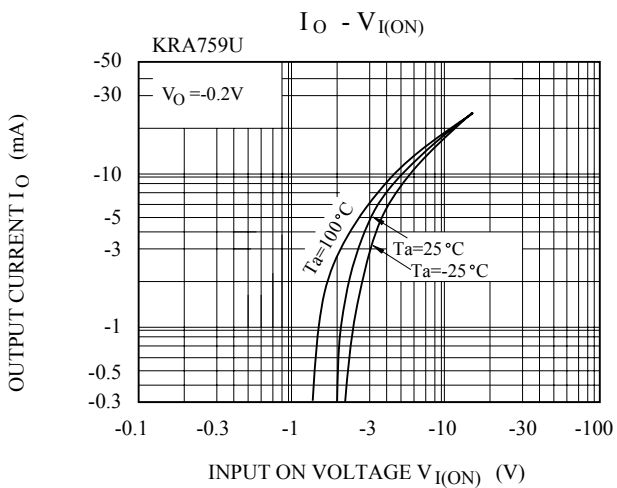
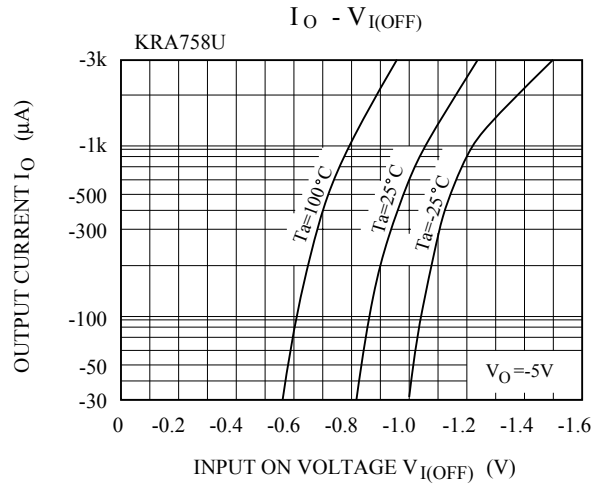
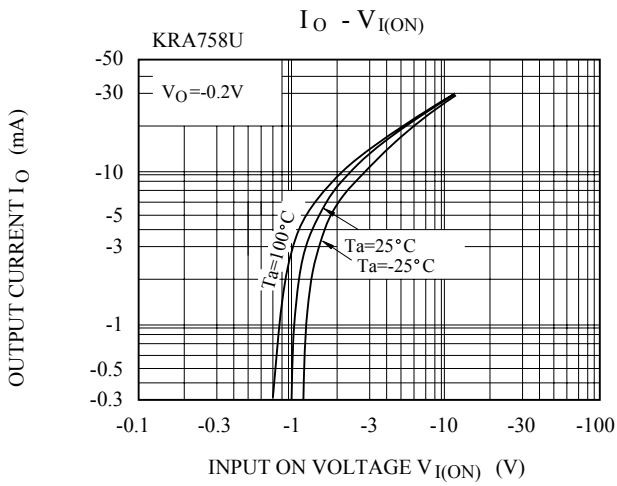
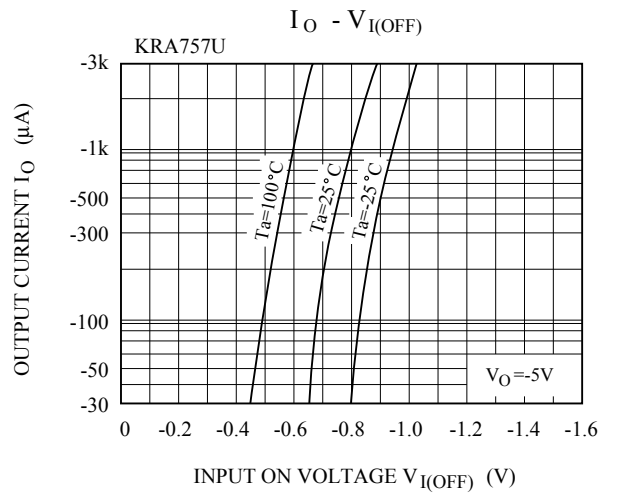
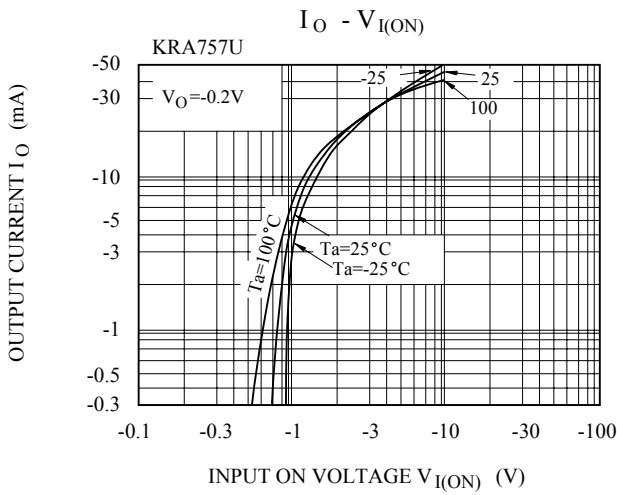
KRA757U~KRA759U

ELECTRICAL CHARACTERISTICS (Ta=25°C)

CHARACTERISTIC		SYMBOL	TEST CONDITION	MIN.	TYP.	MAX.	UNIT	
Output Cut-off Current		KRA757U ~ 759U	$I_{O(OFF)}$	$V_O=-50V, V_I=0$	-	-	-500	nA
DC Current Gain	KRA757U		G_I	$V_O=-5V, I_O=-10mA$	80	150	-	
	KRA758U				80	150	-	
	KRA759U				70	140	-	
Output Voltage		KRA757U ~ 759U	$V_{O(ON)}$	$I_O=-10mA, I_I=-0.5mA$	-	-0.1	-0.3	V
Input Voltage (ON)	KRA757U		$V_{I(ON)}$	$V_O=-0.2V, I_O=-5mA$	-	-1.2	-1.8	V
	KRA758U				-	-1.8	-2.6	
	KRA759U				-	-3.0	-5.8	
Input Voltage (OFF)	KRA757U		$V_{I(OFF)}$	$V_O=-5V, I_O=-0.1mA$	-0.5	-0.75	-	V
	KRA758U				-0.6	-0.88	-	
	KRA759U				-1.5	-1.82	-	
Transition Frequency		KRA757U ~ 759U	f_T^*	$V_O=-10V, I_O=-5mA$	-	200	-	MHz
Input Current	KRA757U		I_I	$V_I=-5V$	-	-	-0.88	mA
	KRA758U				-	-	-0.36	
	KRA759U				-	-	-0.16	
Switching Time	Rise Time	KRA757U	t_r	$V_O=-5V, V_{IN}=-5V$ $R_L=1k\Omega$	-	0.07	-	μS
		KRA758U			-	0.20	-	
		KRA759U			-	0.38	-	
	Storage Time	KRA757U	t_{stg}		-	1.1	-	
		KRA758U			-	1.3	-	
		KRA759U			-	0.7	-	
	Fall Time	KRA757U	t_f		-	0.35	-	
		KRA758U			-	0.4	-	
		KRA759U			-	0.48	-	

Note : * Characteristic of Transistor Only.

KRA757U~KRA759U



KRA757U~KRA759U

