

| Model | Dimension | | | Wire colour | | | Weight grams |
|-------|-----------|------|-----|-------------|--------|-------|-----------------|
| | L | H | V | +ve | output | -ve | |
| 3225 | 164 | 19.7 | 150 | Red | Black | Black | Green |
| 3524 | 185 | 34.1 | 150 | White | White | White | Green |
| 3525 | 193 | 19.7 | 150 | Red | Black | Black | Green |
| 3529 | 150 | 19.7 | 150 | Red | Black | Black | Green |
| 3531 | 193 | 19.7 | 150 | Red | Black | Black | Green |

DIMENSIONS IN MILLIMETERS

SCALE: 1 : 1

DO NOT SCALE DRAWING

DR. BY: DMP DATE: 1-10-94
 CR. BY: SPK DATE: 1.7.94

KNOWLES ELECTRONICS

KNOWLES ELECTRONICS, INC., ITASCA, ILLINOIS U.S.A.

KNOWLES ELECTRONICS, CO., BURGESS HILL, SUSSEX, ENGLAND

TITLE: **Boon microphone**

FB-00

Drafting drawing

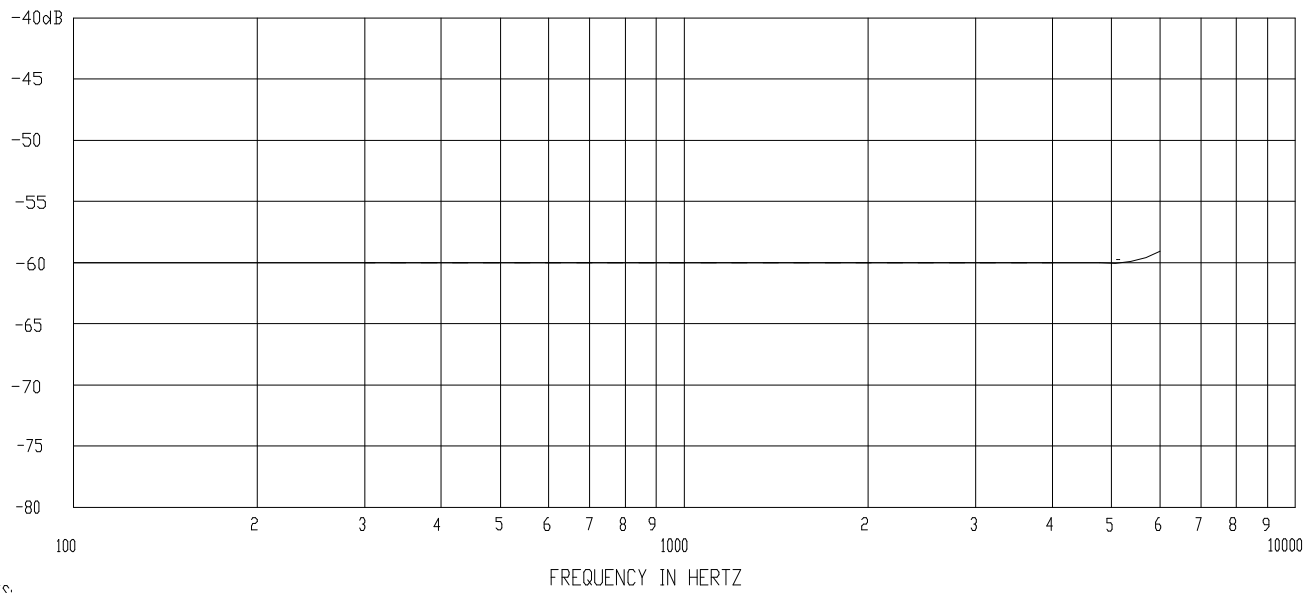
SHT 1.1

APP. BY: R. J. W. DATE: 1.7.94

B

ISSUE

SENSITIVITY IN dB RELATIVE TO 1.0 VOLT/0.1 Pa (N/M)²
FOR CONDITIONS NOTED BELOW.



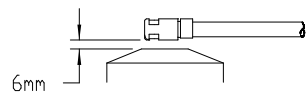
NOTES:

1. MICROPHONE TO BE FUNCTIONAL WITH 10 VDC SUPPLY.
2. SENSITIVITY VALUES INDICATED ON THIS SPECIFICATION ARE VALID AT 50% HUMIDITY.

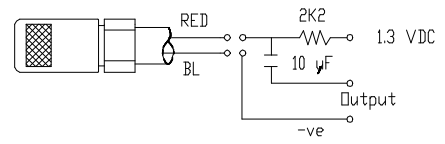
SENSITIVITY

| FREQUENCY | MIN. | NOM. | MAX. |
|-----------|-------|-------|-------|
| 300 | -64.0 | -60.0 | -56.0 |
| 1000 | -63.0 | -60.0 | -57.0 |
| 4000 | -64.0 | -60.0 | -56.0 |

4. TEST CONDITIONS:
HEAD OF BOOM EXPOSED TO 94 dB SPL SWEPT SOUND FIELD AT 6mm FROM VOICE APERTURE.
ARTIFICIAL VOICE:
B & K 4227 MOUTH SIMULATOR.



5. FOR MICROPHONE CAPSULE SPEC. SEE DRG. NR-PC Sht 2.1



Lead identification
& test circuit

Model No.
FB-3225
FB-3531
FB-3533
FB-3534
FB-8515
FB-5522

ISSUE

B

KNOWLES ELECTRONICS

KNOWLES ELECTRONICS, INC., ITASCA, ILLINOIS U.S.A.

KNOWLES ELECTRONICS, CO., BURGESS HILL, SUSSEX, ENGLAND

When test limits are used to establish incoming inspection acceptance/rejection criteria, correlation of test equipment with Knowles is also required for elimination of equipment and test method variations.

C

TITLE: BOOM MICROPHONE
PERFORMANCE SPECIFICATION

FB-PC
SHT 2.1

| DR. BY | DATE |
|---------|----------|
| RW | 2-Nov-95 |
| CK. BY | DATE |
| SRK | 1-Jul-96 |
| APP. BY | DATE |
| RJW | 1-Jul-96 |