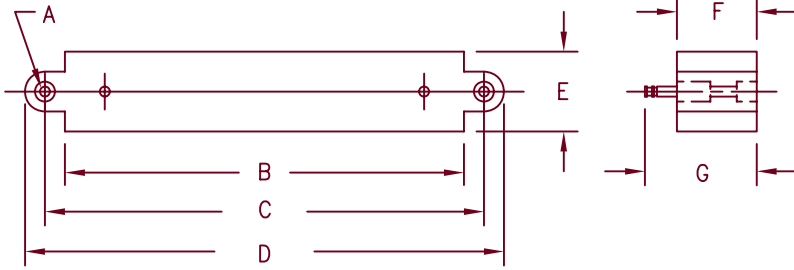


High Voltage Encapsulated Assemblies EF Half Wave Series



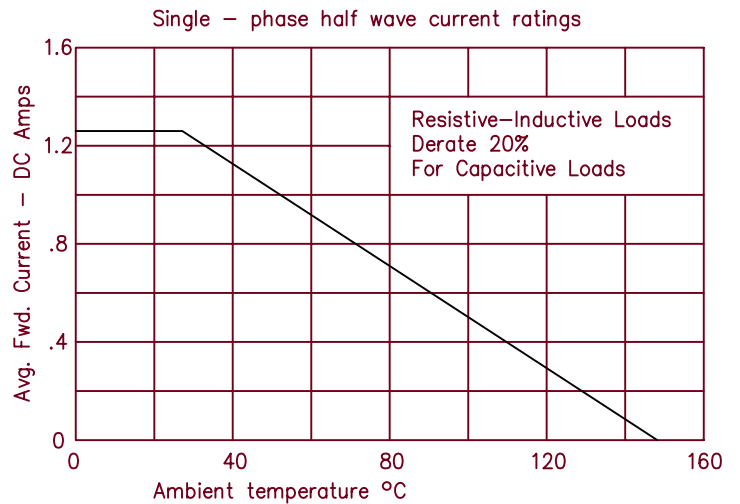
Dimensions			
	Inches	Millimeters	Notes
A	---	---	1
B	5.50	139.7	
C	6.00	152.4	
D	6.625	168.3	
E	1.25	31.8	
F	1.25	31.8	
G	1.688	42.88	

Note 1: .2031" (5.159 mm) Dia. Hole

Microsemi Catalog Number	Max. PRV Rating Per Circuit Arm
EF30* H16	16 KV
EF30* H20	20 KV
*Add T for Turret Terminals *Add F for Faston Terminals *Add L for Flexible Lead (min length=4")	

- Encapsulated assembly
- Half Wave
- Half Wave rating up to 20,000 PRV
- Completely sealed, compact, corrosion and moisture resistant

Electrical Characteristics	
Circuit:	Single half wave
AC Input:	Up to 20,000 PRV
DC Output:	Up to 2.5 Amps DC (see curve)
Surge Current	
Rating:	15 Amps peak for one cycle
Loads:	Resistive, Inductive, Capacitive, Continuous
Duty Cycle:	Continuous
Cooling:	Convection
Single-phase half wave current ratings	



8700 East Thomas Road, P.O. Box 1390
 Scottsdale, AZ 85252
 PH: (480) 941-6300
 FAX: (480) 947-1503
www.microsemi.com

04-24-07 Rev. 2