

DC to AC Inverters

Connector type, Dimming, 7W, for 2 Bulbs

Conformity to RoHS Directive

CXA Series CXA-0217

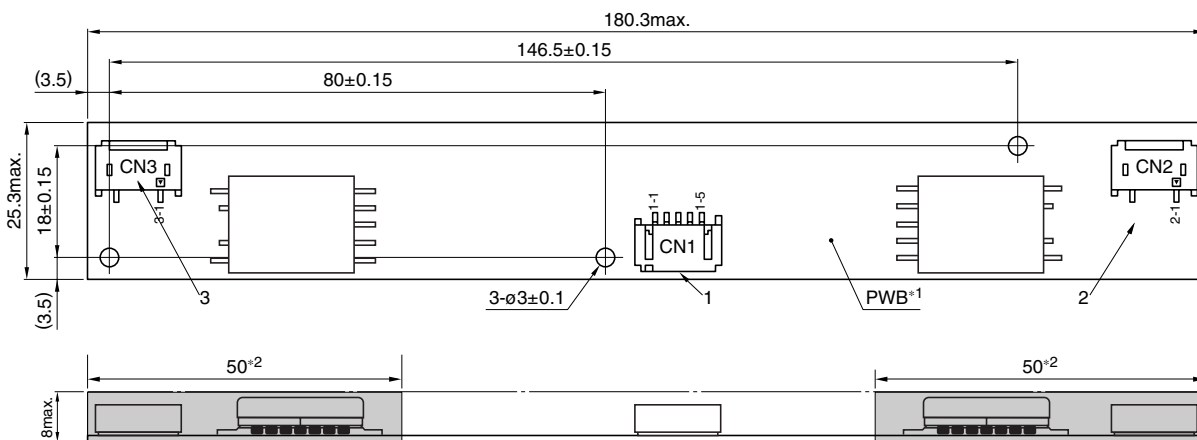
FEATURES

- For 2 bulbs.
- Applicable panel size* : 10 to 15-inch
- With brightness control function.
- The high-voltage terminals are coated with silicone so as to avoid the defects caused by dust.
- It is a product conforming to RoHS directive.
- * The applicable panel size is for typical reference dimensions.

TEMPERATURE AND HUMIDITY RANGES

Temperature range (°C)	Operating	0 to +70
	Storage	-30 to +85
Humidity range(%)RH		95max.
		[Maximum wet-bulb temperature 38°C. No dew.]

SHAPES AND DIMENSIONS



*1 Substrate(PWB: Printed wiring board): Flame retardant material UL94V-0(FR-4 or CEM-3) t=1mm

Weight: 21g typ.

*2 : High-voltage generator (The entire surface within a range of 50mm away from the end of the base in the output)

Dimensions in mm

	Connector manufacturer's company and type	Symbol
1 Input connector	Japan Solderless Terminal Co., Ltd. S5B-PH-SM4	CN1
2 Output connector	Japan Solderless Terminal Co., Ltd. SM02(8.0)B-BHS-1	CN2
3 Output connector	Japan Solderless Terminal Co., Ltd. SM02(8.0)B-BHS-1	CN3

TERMINAL NUMBERS AND FUNCTIONS

CN1

Terminal No.	Function	Symbol
CN1-1	Input voltage Edc: 9.6 to 14.4V/12V[nom.]	V _{in}
CN1-2	0V	GND
CN1-3	Brightness dimmer voltage Edc: 0 to 3.4V(Maximum brightness on 0V)	V _{br}
CN1-4	Used in the internal circuits, do not connect.	N.C.
CN1-5	Remote voltage Edc 0V: off/5 to 7V:on	V _{rmt}

CN3

Terminal No.	Function	Symbol
CN3-1	Output 2[High voltage] I _{rms} 2 to 6mA	V _{HIGH2}
CN3-2	—	N.C.
CN3-3	Output 2[Low voltage] (2V)	V _{LOW2}

CN2

Terminal No.	Function	Symbol
CN2-1	Output 1[High voltage] I _{rms} 2 to 6mA	V _{HIGH1}
CN2-2	—	N.C.
CN2-3	Output 1[Low voltage] (2V)	V _{LOW1}

• Conformity to RoHS Directive: This means that, in conformity with EU Directive 2002/95/EC, lead, cadmium, mercury, hexavalent chromium, and specific bromine-based flame retardants, PBB and PBDE, have not been used, except for exempted applications.

• All specifications are subject to change without notice.

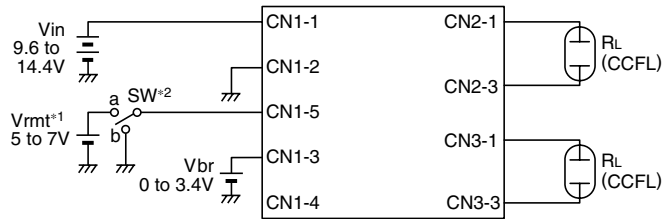
CXA-0217

ELECTRICAL CHARACTERISTICS

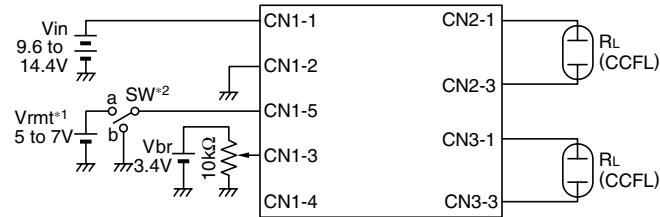
Item	Unit	Symbol	Specification			Condition				Brightness
			min.	typ.	max.	V _{in} (V)	V _{br} (V)	T _a (°C)	R _L (kΩ)	
Output current I _{rms}	mA	lout1	5.3	6	6.7	12±2.4	0	0 to +70	76 to 114	Maximum
		lout2	5.3	6	6.7	12±2.4	0	0 to +70	76 to 114	Maximum
		lout1	5.5	6	6.5	12±1.2	0	0 to +70	95	Maximum
		lout2	5.5	6	6.5	12±1.2	0	0 to +70	95	Maximum
		lout1	1.7	2	2.4	12±1.2	3.4	0 to +70	250	Minimum
		lout2	1.7	2	2.4	12±1.2	3.4	0 to +70	250	Minimum
Input current I _{dc}	A	I _{in}	—	0.76	1.3	12±2.4	0 to 3.4	0 to +70	76 to 114	
Oscillation frequency	kHz	F _L	52	58	64	12±2.4	0	0 to +70	95	
Open circuit output voltage E _{rms}	V	V _{open}	1400	1500	2000	12±2.4	0 to 3.4	0 to +70	∞	

TYPICAL CONNECTIONS

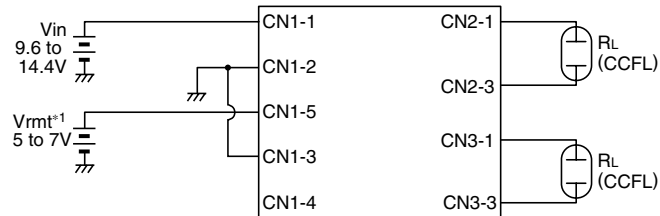
EXAMPLE OF VOLTAGE DIMMER CONTROL



EXAMPLE OF POTENTIOMETER DIMMER CONTROL



NO DIMMER CONTROL (BRIGHTNESS MAX.)



*1 V_{rmt} (remote voltage) shall be ON after V_{in} is ON.

*2 SW a: on, b: off

BRIGHTNESS DIMMER VOLTAGE- OUTPUT CURRENT CHARACTERISTICS

