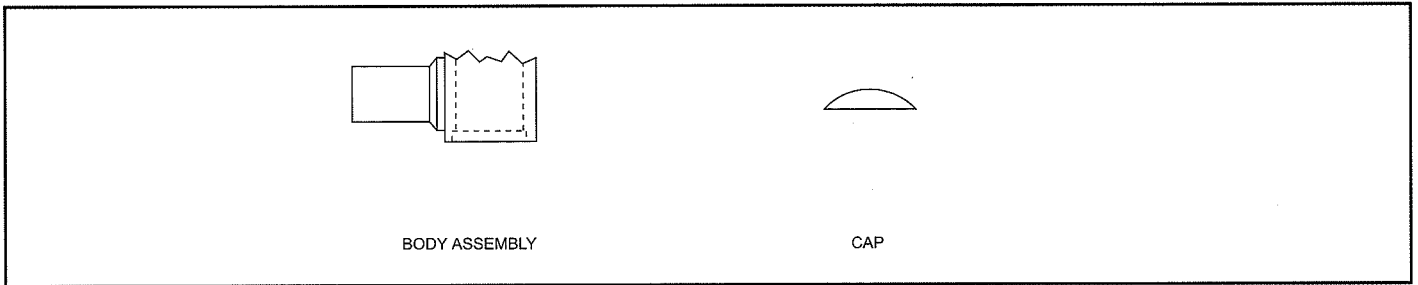


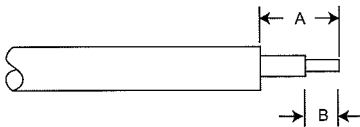
ASSEMBLY INSTRUCTIONS

AI-98

SMA Right Angle Connectors, Direct Solder Type for Semi-Rigid Cable



STEP 1

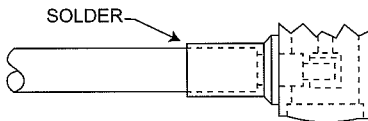


1. Trim cable jacket, dielectric and center conductor to dimensions shown, being careful not to fracture the center conductor. Tin center conductor (DO NOT OVER TIN).

$$A = 4,75 \pm 0,13 \text{ (.187 } \pm \text{ .005)}$$

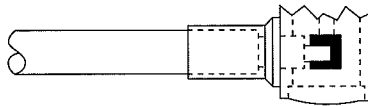
$$B = 2,29 \pm 0,13 \text{ (.097 } \pm \text{ .005)}$$

STEP 2



2. Slide cable into body and solder into place.

STEP 3



3. Solder center conductor to contact (do not over solder), then locate the cap in rear of body and dimple or lightly punch to ensure it is locked in position.