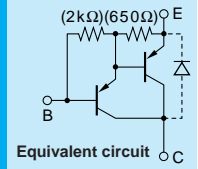


# Darlington

# 2SB1257



Silicon PNP Epitaxial Planar Transistor (Complement to type 2SD2014)

Application : Driver for Solenoid, Relay and Motor and General Purpose

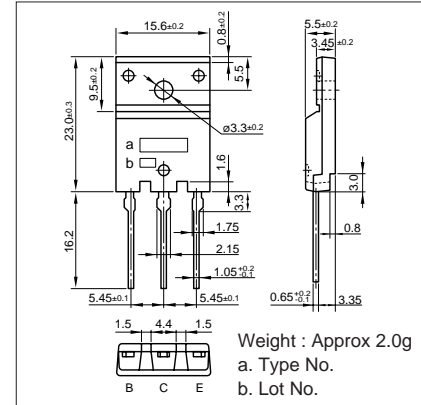
### Absolute maximum ratings (Ta=25°C)

Symbol	2SB1257	Unit
V <sub>CB0</sub>	-60	V
V <sub>CEO</sub>	-60	V
V <sub>EB0</sub>	-6	V
I <sub>C</sub>	-4 (Pulse-6)	A
I <sub>B</sub>	-1	A
P <sub>C</sub>	25 (T <sub>C</sub> =25°C)	W
T <sub>J</sub>	150	°C
T <sub>stg</sub>	-55 to +150	°C

### Electrical Characteristics (Ta=25°C)

Symbol	Conditions	2SB1257	Unit
I <sub>CB0</sub>	V <sub>CB</sub> =-60V	-10max	μA
I <sub>EB0</sub>	V <sub>EB</sub> =-6V	-10max	μA
V(BR) <sub>CEO</sub>	I <sub>C</sub> =-10mA	-60min	V
h <sub>FE</sub>	V <sub>CE</sub> =-4V, I <sub>C</sub> =-3A	2000min	
V <sub>CE(sat)</sub>	I <sub>C</sub> =-3A, I <sub>B</sub> =-6mA	-1.5max	V
V <sub>BE(sat)</sub>	I <sub>C</sub> =-3A, I <sub>B</sub> =-6mA	-2max	V
f <sub>r</sub>	V <sub>CE</sub> =-12V, I <sub>E</sub> =0.2A	150typ	MHz
COB	V <sub>CB</sub> =-10V, f=1MHz	75typ	pF

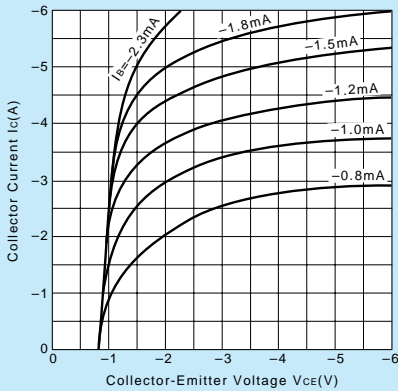
### External Dimensions FM20(TO220F)



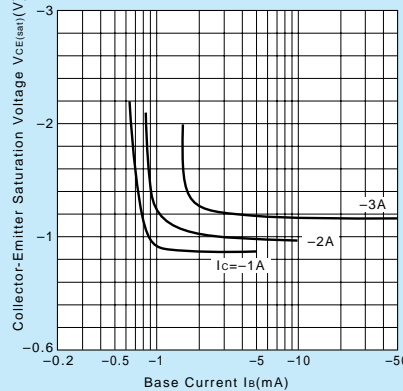
### Typical Switching Characteristics (Common Emitter)

V <sub>CC</sub> (V)	R <sub>L</sub> (Ω)	I <sub>C</sub> (A)	V <sub>BB1</sub> (V)	V <sub>BB2</sub> (V)	I <sub>B1</sub> (mA)	I <sub>B2</sub> (mA)	t <sub>on</sub> (μs)	t <sub>stg</sub> (μs)	t <sub>f</sub> (μs)
-30	10	-3	-10	5	-10	10	0.4typ	0.8typ	0.6typ

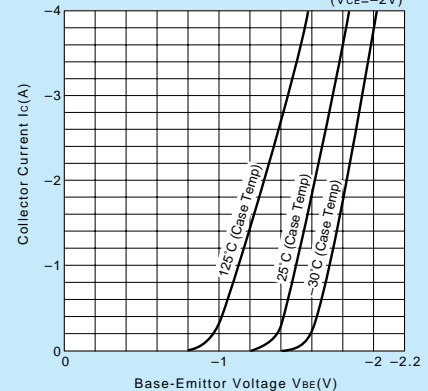
I<sub>C</sub>-V<sub>CE</sub> Characteristics (Typical)



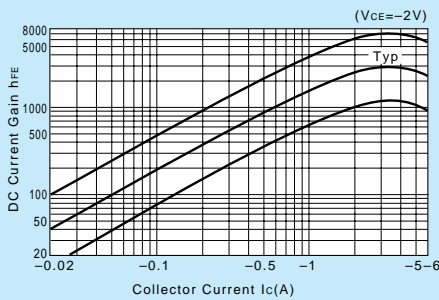
V<sub>CE(sat)</sub>-I<sub>B</sub> Characteristics (Typical)



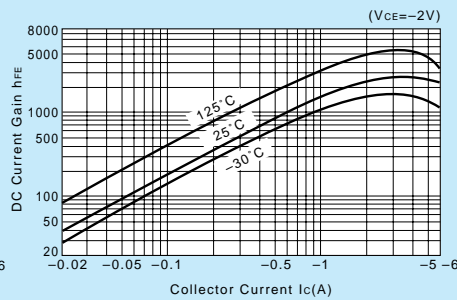
I<sub>C</sub>-V<sub>BE</sub> Temperature Characteristics (Typical)



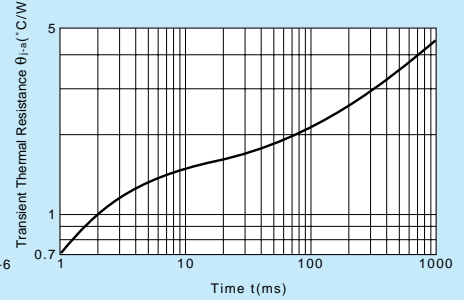
h<sub>FE</sub>-I<sub>C</sub> Characteristics (Typical)



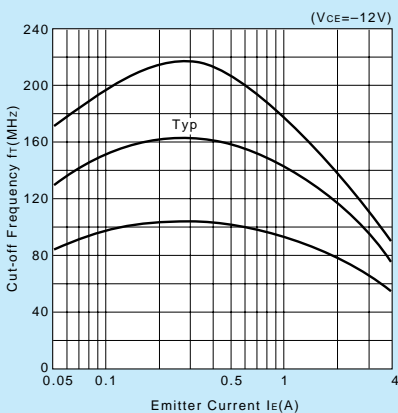
h<sub>FE</sub>-I<sub>C</sub> Temperature Characteristics (Typical)



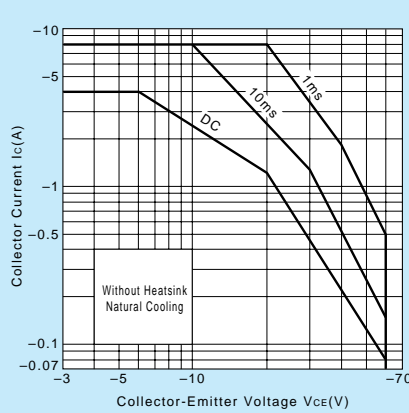
θ<sub>j-a</sub>-t Characteristics



f<sub>T</sub>-I<sub>E</sub> Characteristics (Typical)



Safe Operating Area (Single Pulse)



P<sub>C</sub>-T<sub>a</sub> Derating

