

DATA SHEET

Silicon Schottky Diode Chips

Features

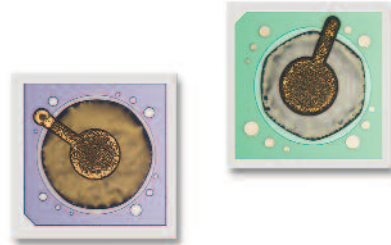
- For detector and mixer applications
- Low capacitance for usage beyond 40 GHz
- ZBD and low-barrier designs
- P-type and N-type junctions
- Large bond pad chip design
- Available lead (Pb)-free, RoHS-compliant, and Green

Description

Skyworks silicon Schottky diode chips are intended for use as detector and mixer devices in hybrid integrated circuits at frequencies from below 100 MHz to higher than 40 GHz. Skyworks “Universal Chip” design features a 4-mil-diameter bond pad that is offset from the semiconductor junction preventing damage to the active junction as a result of wire bonding.

As power-sensing detectors, these Schottky diode chips all have the same voltage sensitivity so long as the output video impedance is much higher than the video resistance of the diode. Figure 1 shows the expected detected voltage sensitivity as a function of RF source impedance in an untuned circuit. Note that sensitivity is substantially increased by transforming the source impedance from 50 Ω to higher values. Maximum sensitivity occurs when the source impedance equals the video resistance.

In a detector circuit operating at zero bias, depending on the video load impedance, a ZBD device with R_V less than 10 $k\Omega$ may be more sensitive than a low-barrier diode with R_V greater than 100 $k\Omega$. Applying forward bias reduces the diode video resistance as shown in Figure 2. Lower video resistance also increases the video bandwidth but does not increase voltage sensitivity, as shown in Figure 3. Biased Schottky diodes have better temperature stability and also may be used in temperature compensated detector circuits.



P-type Schottky diodes generate lower 1/F noise and are preferred for Doppler mixers and biased detector applications. The bond pad for the P-type Schottky diode is the cathode. N-type Schottky diodes have lower parasitic resistance, R_S , and will perform with lower conversion loss in mixer circuits. The bond pad for the N-type Schottky diode is the anode.

NEW Skyworks Green™ products are lead (Pb)-free, RoHS (Restriction of Hazardous Substances)-compliant, conform to the EIA/EICTA/JEITA Joint Industry Guide (JIG) Level A guidelines, and are free from antimony trioxide and brominated flame retardants.



Electrical Specifications at 25 °C

Part Number	Barrier	Junction Type	$C_J^{(1)}$	$R_T^{(2)}$	$V_F @ 1 \text{ mA}$	$V_B^{(3)}$	$R_V @ \text{Zero Bias}$	Outline Drawing
			(pF)	(Ω)	(mV)	(V)	(k Ω)	
			Max.	Max.	Min.–Max.	Min.	Typ.	
CDC7630-000	ZBD	P	0.25	30	135–240	1	5.5	571-006
CDC7631-000	ZBD	P	0.15	80	150–300	2	7.2	571-006
CDB7619-000	Low	P	0.1	40	275–375	2	735	571-006
CDB7620-000	Low	P	0.15	30	250–350	2	537	571-006
CDF7621-000	Low	N	0.1	20	270–350	2	680	571-011
CDF7623-000	Low	N	0.3	10	240–300	2	245	571-011

1. C_J for low barrier diodes specified at 0 V. C_J for ZBDs specified at 0.15 V reverse bias.
 2. R_T is the slope resistance at 10 mA. R_S Max. may be calculated from: $R_S = R_T - 2.6 \times N$.
 3. V_B for low barrier diodes is specified at 10 μA . V_B for ZBDs is specified at 100 μA .

Typical Performance Data

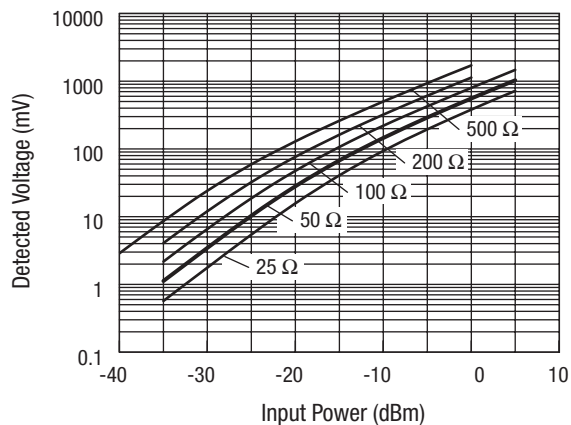
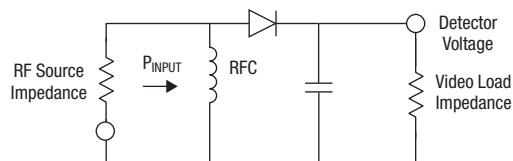
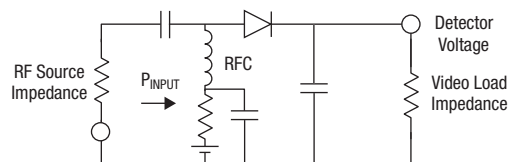


Figure 1. Detected Voltage vs. Input Power and RF Source Impedance



Zero Biased Detector



Biased Detector

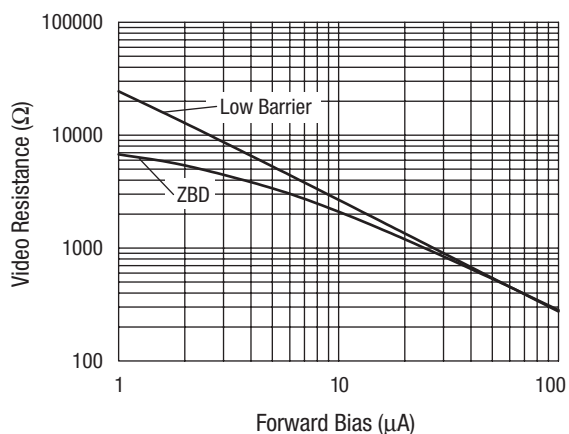


Figure 2. Video Resistance vs. Forward Bias Current

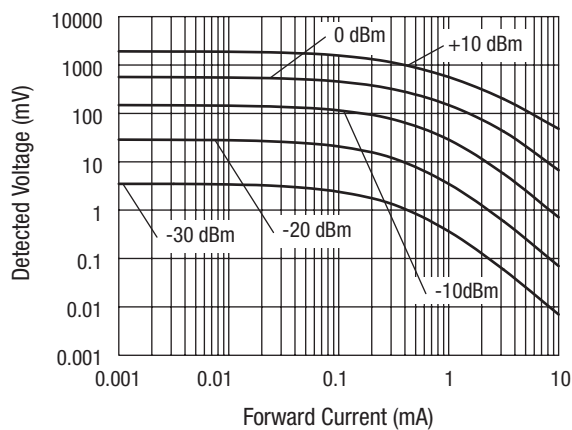


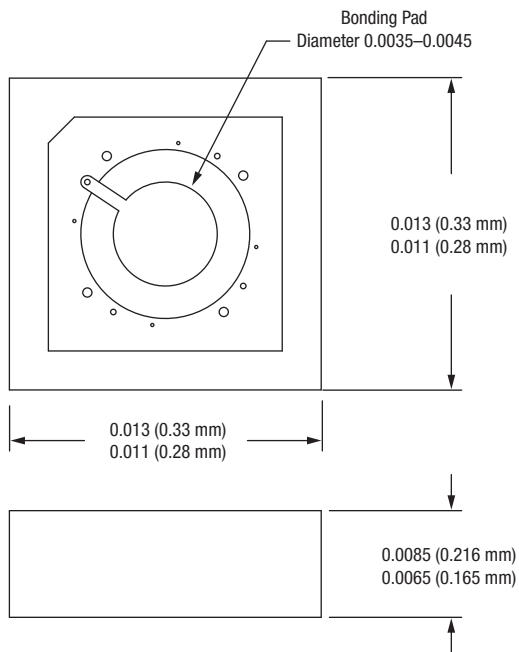
Figure 3. Detected Voltage vs. Forward Current

SPICE Model Parameters

Parameter	CDB7619	CDB7620	CDF7621	CDF7623	CDC7630	CDC7631	Units
IS	3.70E-08	5.40E-08	4.0E-08	1.1E-07	5.0E-06	3.8E-06	A
RS	9	14	12	6	20	51	Ω
N	1.05	1.12	1.05	1.04	1.05	1.05	
TT	1E-11	1E-11	1E-11	1E-11	1E-11	1E-11	s
CJO	0.08	0.15	0.1	0.22	0.14	0.08	pF
M	0.35	0.35	0.35	0.32	0.4	0.4	
EG	0.69	0.69	0.69	0.69	0.69	0.69	eV
XTI	2	2	2	2	2	2	
FC	0.5	0.5	0.5	0.5	0.5	0.5	
BV	2	4	3	2	2	2	V
IBV	1E-05	1E-05	1E-05	1E-05	1E-04	1E-04	A
VJ	0.495	0.495	0.495	0.495	0.34	0.34	V

Outline Drawing

571-006 (Cathode Bond Pad), 571-011 (Anode Bond Pad)



Absolute Maximum Ratings

Characteristic	Value
Reverse voltage (V_R)	Voltage rating
Forward current (I_F)	50 mA
Power dissipation (P_D)	75 mW
Storage temperature (T_{ST})	-65 °C to +150 °C
Operating temperature (T_{OP})	-65 °C to +150 °C
Electrostatic Discharge (ESD) Human Body Mode (HBM)	Class 0
Electrostatic Discharge (ESD) Charged Device Model (CDM)	Class C4

Performance is guaranteed only under the conditions listed in the specifications table and is not guaranteed under the full range(s) described by the Absolute Maximum specifications. Exceeding any of the absolute maximum/minimum specifications may result in permanent damage to the device and will void the warranty.

CAUTION: Although this device is designed to be as robust as possible, ESD (Electrostatic Discharge) can damage this device. This device must be protected at all times from ESD. Static charges may easily produce potentials of several kilovolts on the human body or equipment, which can discharge without detection. Industry-standard ESD precautions must be employed at all times.

Copyright © 2002, 2003, 2004, 2005, 2006, 2007, Skyworks Solutions, Inc. All Rights Reserved.

Information in this document is provided in connection with Skyworks Solutions, Inc. ("Skyworks") products or services. These materials, including the information contained herein, are provided by Skyworks as a service to its customers and may be used for informational purposes only by the customer. Skyworks assumes no responsibility for errors or omissions in these materials or the information contained herein. Skyworks may change its documentation, products, services, specifications or product descriptions at any time, without notice. Skyworks makes no commitment to update the materials or information and shall have no responsibility whatsoever for conflicts, incompatibilities, or other difficulties arising from any future changes.

No license, whether express, implied, by estoppel or otherwise, is granted to any intellectual property rights by this document. Skyworks assumes no liability for any materials, products or information provided hereunder, including the sale, distribution, reproduction or use of Skyworks products, information or materials, except as may be provided in Skyworks Terms and Conditions of Sale.

THE MATERIALS, PRODUCTS AND INFORMATION ARE PROVIDED "AS IS" WITHOUT WARRANTY OF ANY KIND, WHETHER EXPRESS, IMPLIED, STATUTORY, OR OTHERWISE, INCLUDING FITNESS FOR A PARTICULAR PURPOSE OR USE, MERCHANTABILITY, PERFORMANCE, QUALITY OR NON-INFRINGEMENT OF ANY INTELLECTUAL PROPERTY RIGHT; ALL SUCH WARRANTIES ARE HEREBY EXPRESSLY DISCLAIMED. SKYWORKS DOES NOT WARRANT THE ACCURACY OR COMPLETENESS OF THE INFORMATION, TEXT, GRAPHICS OR OTHER ITEMS CONTAINED WITHIN THESE MATERIALS. SKYWORKS SHALL NOT BE LIABLE FOR ANY DAMAGES, INCLUDING BUT NOT LIMITED TO ANY SPECIAL, INDIRECT, INCIDENTAL, STATUTORY, OR CONSEQUENTIAL DAMAGES, INCLUDING WITHOUT LIMITATION, LOST REVENUES OR LOST PROFITS THAT MAY RESULT FROM THE USE OF THE MATERIALS OR INFORMATION, WHETHER OR NOT THE RECIPIENT OF MATERIALS HAS BEEN ADVISED OF THE POSSIBILITY OF SUCH DAMAGE.

Skyworks products are not intended for use in medical, lifesaving or life-sustaining applications, or other equipment in which the failure of the Skyworks products could lead to personal injury, death, physical or environmental damage. Skyworks customers using or selling Skyworks products for use in such applications do so at their own risk and agree to fully indemnify Skyworks for any damages resulting from such improper use or sale.

Customers are responsible for their products and applications using Skyworks products, which may deviate from published specifications as a result of design defects, errors, or operation of products outside of published parameters or design specifications. Customers should include design and operating safeguards to minimize these and other risks. Skyworks assumes no liability for applications assistance, customer product design, or damage to any equipment resulting from the use of Skyworks products outside of stated published specifications or parameters.

Skyworks, the Skyworks symbol, and "Breakthrough Simplicity" are trademarks or registered trademarks of Skyworks Solutions, Inc., in the United States and other countries. Third-party brands and names are for identification purposes only, and are the property of their respective owners. Additional information, including relevant terms and conditions, posted at www.skyworksinc.com, are incorporated by reference.