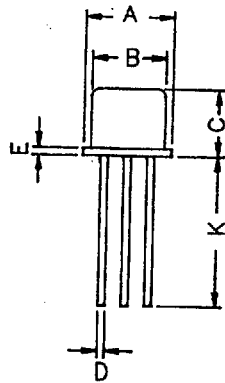
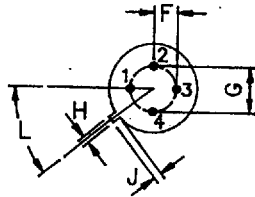


www.DataSheet4U.com



DIM	MIN	MAX
A	5,24	5,84
B	4,52	4,95
C	4,31	5,33
D	0,40	0,53
E	-	0,76
F	1,14	1,39
G	2,28	2,97
H	0,91	1,17
J	0,71	1,22
K	12,7	-
L	12 DEG	48 DEG

ALL DIMENSIONS ARE IN M.M.



Pin Configuration Available in TO-72

CDIL Code Style	PIN 1	PIN 2	PIN 3	PIN 4
TO-72	Emitter	Base	Collector	Case
TO-72-1	Base	Emitter	Collector	Case
TO-72-2	Source	Drain	Gate	Case

TO-72 Metal-Can Package Transistors (NPN)

Maximum Ratings							Electrical Characteristics (Ta=25°C, Unless Otherwise Specified)																		
Type No.	V _{CB0} (V) Min	V _{CEO} (V) Min	V _{EBO} (V) Min	P _D (W) @Ta=25°C	I _C (A)	I _{CB0} (μA) Max	V _{CB} (V) @ I _C	I _{CES} Max	V _{CE}	h _{FE} Min	h _{FE} Max	I _C (mA)	V _{CE} (V)	V _{CE(SAT)} (V) & Min	V _{BE(SAT)} (V) @ I _C Max	I _C (mA)	C _{ob} (pF) Max	f _i (MHz) @ I _C (mA) Min	f _i (MHz) @ I _C (mA) Typ	f _i (MHz) @ I _C (mA) Max	NF (dB) @ Freq (MHz) Max	C _{re} (pF) Max	CDIL Case Style		
2N917	30	15	3	0.2	0.05	1	15			20	200	3	1	0.4	1	10	2	6		4					TO-72
2N918	30	15	3	0.2	0.05	0.01	15			20		3	1	0.4	1	10	1.7	600		4					TO-72
2N3933	40	30	2.5	0.2	0.01	0.01	15			60	200	2	8				0.55	750	1600	2	4	200			TO-72
2N5179	20	12	2.5	0.2	0.05	0.02	15			25	250	3	1	0.4	1	10	1	900	2000	5	4.5	200			TO-72
BF115	50	30	5	0.145	0.03					48	167	1	10						230		1				TO-72
BF167	40	30	4	0.15	0.03			0.05	10	30		4	10												TO-72-1
BF173	40	25	4	0.2	0.03					15		20	2						550		5	3.5	36		TO-72
BF180	30	20	3	0.15	0.02	0.1	20			13		2	10												TO-72
BF181	30	20	3	0.15	0.02	0.1	20			6		12	7												TO-72
BF182	25	20	3	0.15	0.02	0.4	15			10		2	10						650		2	3.3	0.33		TO-72-1
BF184	30	20	5	0.145	0.03					67	220	1	10	0.7	0.74	1		200		1	2		0.9		TO-72-1
BF185	30	20	5	0.145	0.03					36	125	1	10	0.7	0.74	1		200	260	1	2		0.9		TO-72-1
BF200	30	20	3	0.15	0.02	0.1	40			15		3	10												TO-72
CSC568	30	15	3	0.2	0.02	0.1	15			30	250	2	6							5	5				TO-72
CSC2570	25	12	3	0.6	0.07	0.1	15			40	200	20	10					0.9		5000	20	3	1000		TO-72-1