



30.5×30.5×40

# NSG-1 & NSG-2

## Features

- Stable electronic timing.
- Wide operating voltage and temperature range.
- Suitable for feast light during car turning.

## Coil Parameter

Rated voltage	12VDC,24VDC
Operating voltage drop	<0.4VDC at rated turn signal load
Device voltage drop	<0.45VDC at rated hazard signal load
Initial turn-on	50ms
Sound pressure level	70dB
Upper limit temperature for the coil	125°C

## Characteristics

Contact Arrangement	1A
Max output power	98W
Shock Resistance	200m/s <sup>2</sup> 10ms Half sine wave pulse IEC68-2-27 Test Ea
Vibration Resistance	10~40Hz Double amplitude 1.27mm IEC68-2-6 Test Fc 40~70Hz 50m/s <sup>2</sup> 70~100Hz Double amplitude 0.5mm IEC68-2-6 Test Fc 100~500Hz 100m/s <sup>2</sup>
Drop test	Capable of meeting specifications 1m drop onto concrete IEC68-2-32 Test Ed method 1

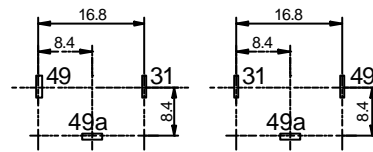
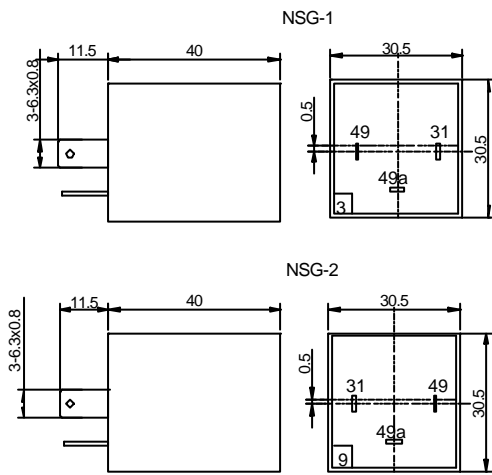
Contact data: Load requirements at 12.8VDC	Loads	2Lamp system	3Lamp system
	Turn signal mode:Rated loads		2x21W +1x5W +1x1.2W
Outage loads		1x21W +1x5W +1x1.2W	2x21W +1x5W +1x1.2W
Hazard mode:Rated loads		4x21W +2x5W +2x1.2W	6x21W +2x5W +2x1.2W

Ambient temperature	-40~85°C
Relative humidity	20 ~ 50 % at 23°C
Mass	35g Approx

Ordering Information

NSG-1	A	Z				
Z=Dust Covered						
Contact Arrangement :A=1A						
Part number :NSG-1, NSG-2						

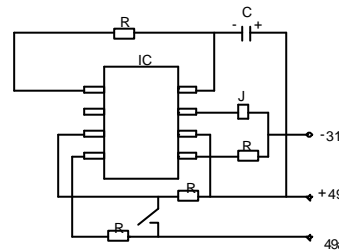
Dimensions (Unit: mm)



mm	inch
0.5	0.020
0.8	0.031
6.3	0.248
8.4	0.331
11.5	0.453
16.8	0.661
30.5	1.201
40	1.575

Mounting (Bottom views)

Dimensions



Wiring diagram

NOTES 1).Dimensions are in millimeter.

2).Inch equivalents are given for general information only.