

# Ceramic Monoblock Duplex Filter



# Model KFF6075B Technical Data

## Features:

- High Power
- Exceptional Performance
- Rugged Bracket Mounting

## Description and Applications:

A high power duplexer suitable for mobile applications in the 800MHz cellular band.



## Electrical Specifications

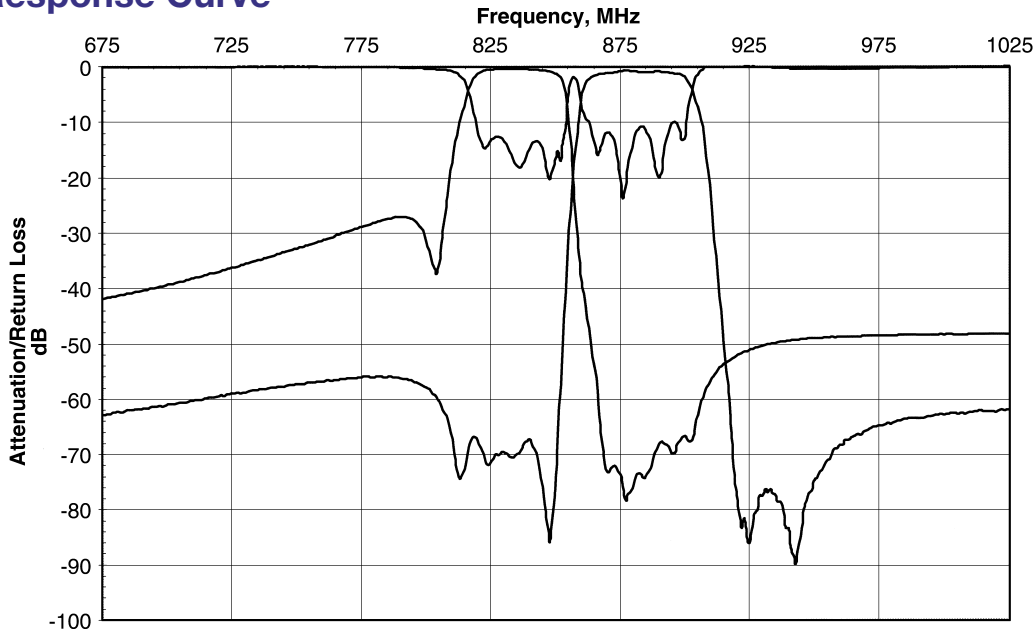
| Antenna to TX Response | Frequency          | Specifications @ 25° C |
|------------------------|--------------------|------------------------|
| Insertion Loss         | 824 MHz to 849 MHz | 2.5 dB max.            |
| Return Loss            |                    | 9.5 dB min.            |
| Attenuation            | 869 MHz to 894 MHz | 60 dB min.             |
|                        |                    |                        |
| Antenna to RX Response | Frequency          | Specifications @ 25° C |
| Insertion Loss         | 869 MHz to 894 MHz | 2.5 dB max.            |
| Return Loss            |                    | 7.5 dB min.            |
| Attenuation            | 824 MHz to 849 MHz | 65 dB min.             |
|                        |                    |                        |
| Power Rating           |                    | 5 W                    |
| Impedance              |                    | 50 Ω                   |

NOTE: Supplier shall test each filter to the critical electrical specifications listed above or better. Any subsequent audits may deviate due to measurement repeatability among different test systems. Such deviations shall not exceed the following limits:

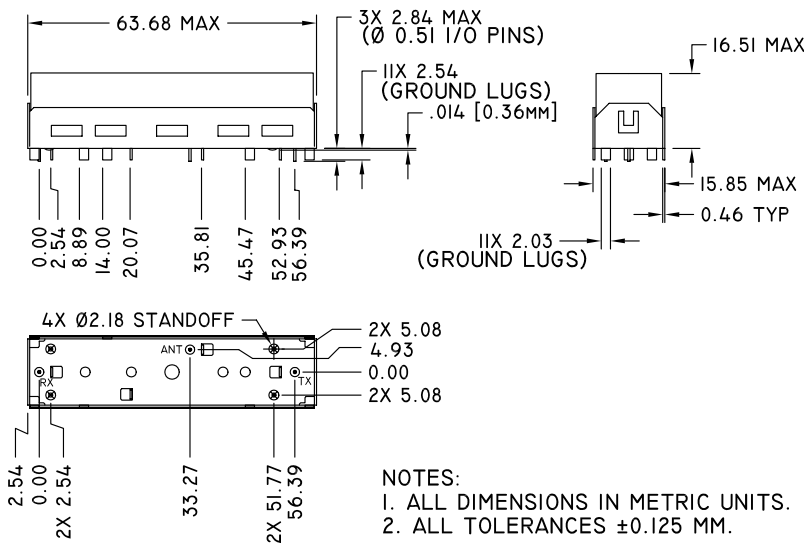
| Specification  | Allowance |
|----------------|-----------|
| Insertion Loss | 0.1 dB    |
| Return Loss    | 1.0 dB    |
| Stopbands      | 1.0 dB    |

Rev. 1

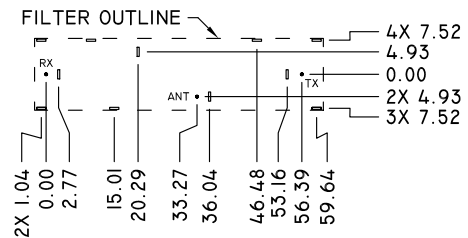
**Typical Response Curve**



**Mechanical Dimensions**



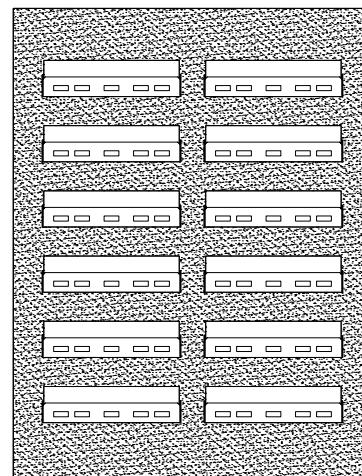
**PC Board Layout**



VIEW LOOKING DOWN ON FILTER TO PC BOARD  
ALL DIMENSIONS NOMINAL

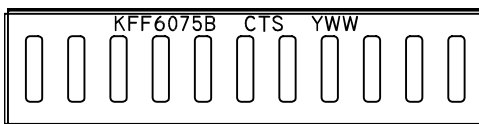
**Packaging**

This product is shipped in pre-formed foam trays.



**Part Marking**

Y = LAST DIGIT OF YEAR  
WW = SEQUENTIAL WEEK NUMBER



**Contact Information:**

**CTS WIRELESS COMPONENTS INC.** / 171 Covington Drive / Bloomingdale, IL 60108  
PHONE: (800) 757-6686 / FAX: (630) 924-6610 / www.ctscorp.com

Document Control #6287044Y01 Rev 1

Date of Origin 02/22/01

Date of Revision 02/22/01

THIS DATA SHEET IS NOT AN OFFER FOR SALE AND SHALL NOT OBLIGATE CTS TO SELL THE PRODUCTS DESCRIBED HEREIN OR ANY OTHER PRODUCTS. CTS MAY, IN ITS SOLE DISCRETION, MODIFY OR DISCONTINUE THE SALE OF ITS PRODUCTS AT ANY TIME WITHOUT NOTICE. CTS MAKES NO WARRANTY, INCLUDING WARRANTIES OF MERCHANTABILITY OR FITNESS FOR A PARTICULAR PURPOSE, WITH RESPECT TO THE PRODUCTS REFERENCED OR INFORMATION PROVIDED HEREIN.

CTS® is a registered trademark of CTS Corporation.